

Goya, Madrid

REF. VM2510090

Penthouse for sale in Goya

Features

- ✓ Views
- ✓ Furnished
- ✓ Terrace
- ✓ Security
- ✓ Heating
- ✓ AACC
- ✓ Lift
- ✓ Concierge

Surface

120 m²

Bedrooms

2

Bathrooms

2



Price

1,750,000 €

Discover this magnificent penthouse apartment measuring over 100 m² located in one of Madrid's most sought-after areas.

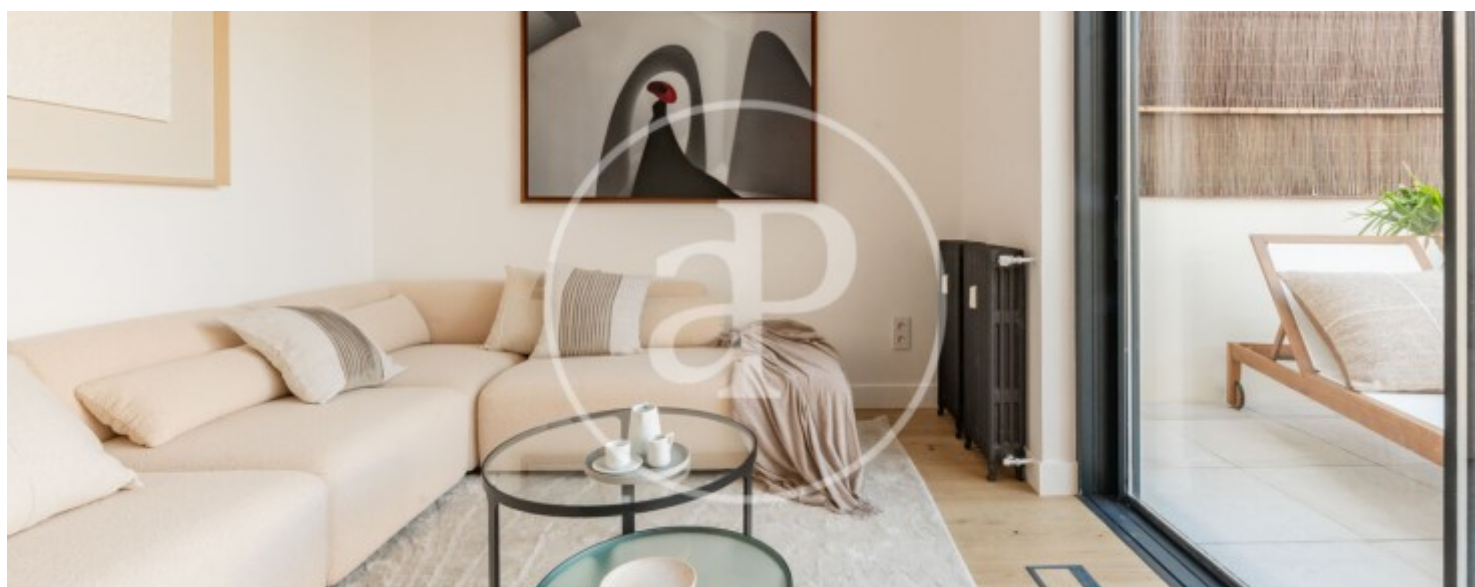
A unique property that combines spaciousness, comfort, and excellent natural light throughout the day. The property has two large bedrooms, both with en-suite bathrooms, offering maximum privacy and comfort. The master bedroom also has a dressing room, creating an intimate and functional space. The living-dining room opens onto one of the two private terraces, perfect for enjoying the sun and the outdoors in the heart of the city. The second terrace provides an additional corner of tranquility and charm. The property is completely renovated,

furnished, and brand new. Can you imagine living here?

Contact us,
we will be happy to assist you,
to offer you more details and information.

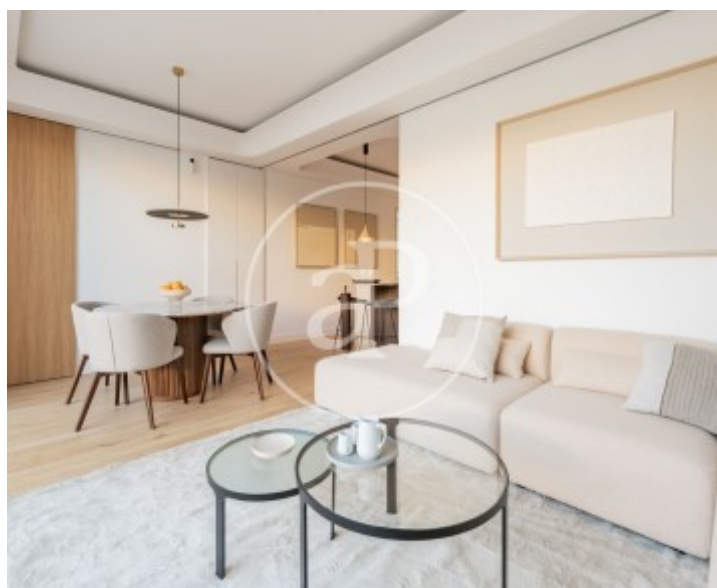
Goya, Madrid

REF. VM2510090



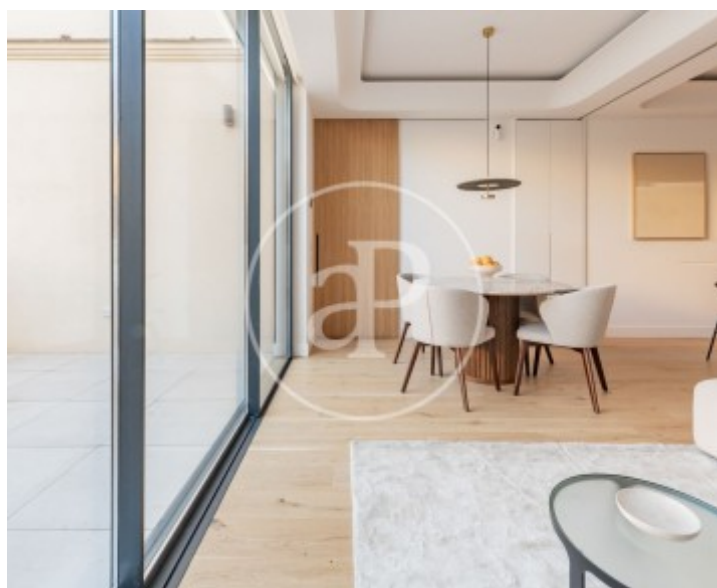
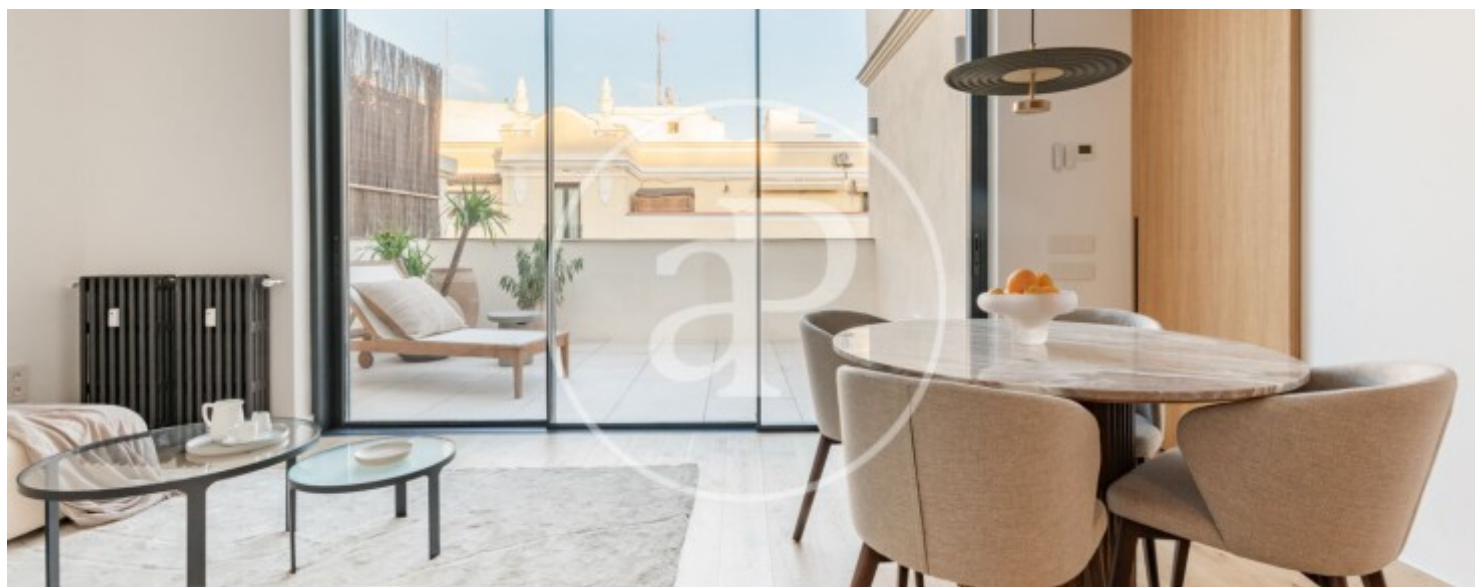
Goya, Madrid

REF. VM2510090



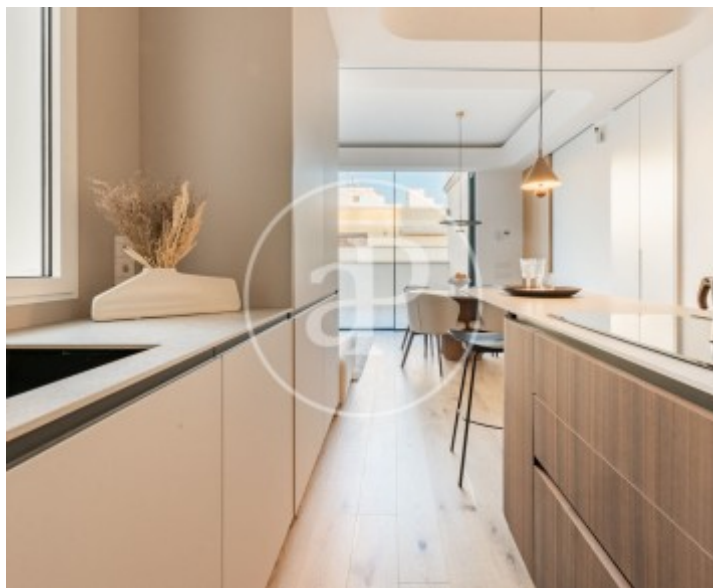
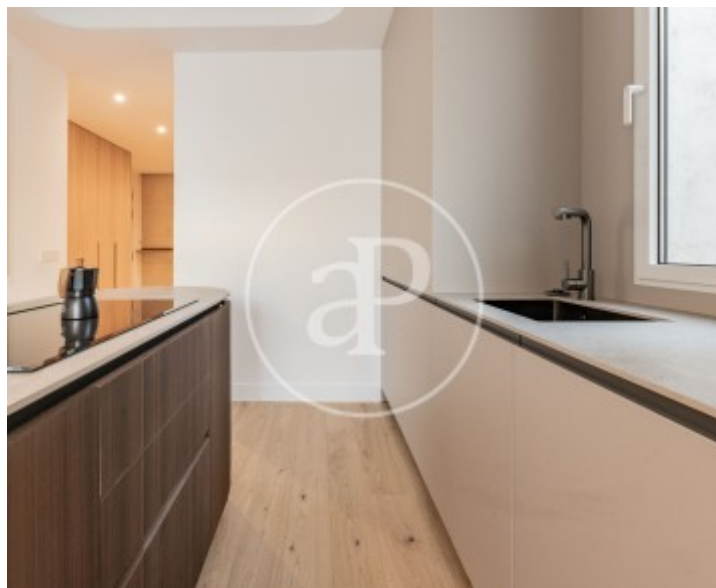
Goya, Madrid

REF. VM2510090



Goya, Madrid

REF. VM2510090



The information about any property is not binding to any offer or contract. Any verbal or written declaration made by aProperties with regards to the value or condition of the property should not be considered accurate or factual. The pictures make reference to some parts of the property at the times that they were taken. The areas, dimensions and distances that are given are approximate and should be checked by the client. The images are computer generated and are just an approximate indication of the real appearance of the property; these may change at any time. The information with regards to the property may also change at any time.

For **more information** or
to make an appointment

apropertiesmadrid@aproperties.es
Tel: 91 800 54 65
www.aproperties.es