

Goya, Madrid

REF. VM2403019



Penthouse for sale in Goya

Features

Surface

86 m²

Bedrooms

2

Bathrooms

2

✓ Views ✓ Terrace

Price

900,000 €



In the distinguished Barrio de Salamanca, next to the Plaza Felipe II and a few metres walk from the Retiro Park and the best leisure areas, shops and restaurants, APROPERTIES offers for sale this magnificent flat of 87 m² exterior to renovate plus a magnificent roof terrace of 60 m². It is a fifth and last exterior floor, very luminous and east facing. Currently, the project for the installation of the lift is pending of license to start the works. The property has many possibilities of redistribution, being able to have a large living-dining room with two balconies, semi-integrated kitchen and two double bedrooms with two complete bathrooms. Photos of how it could be reformed are included. The property in which it is located has a classic façade and beautiful balconies with ballast.

Its privileged location and the fantastic connection with the main public transport lines and easy access to the M30, make it a formidable investment opportunity to live in one of the best areas of the capital. Can you imagine living here?

Contact us,
we will be happy to assist you,
to offer you more details and information.

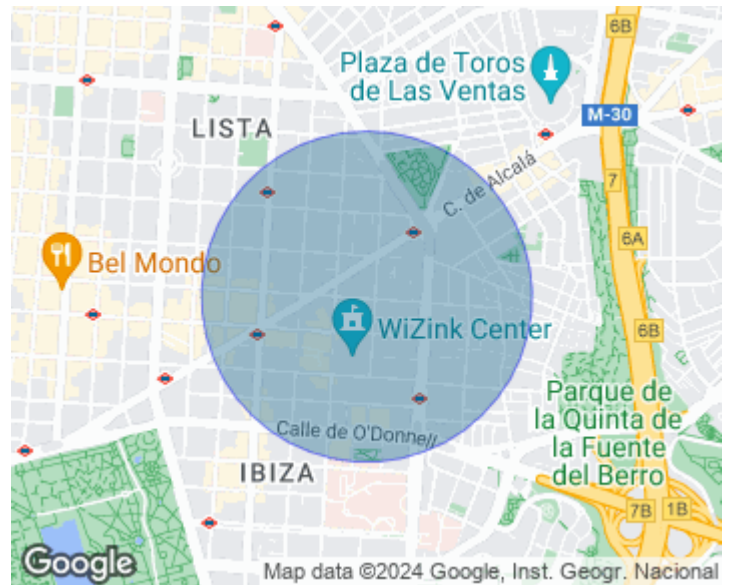


APROPERTIES
REAL ESTATE

Calle Serrano 60
28001 Madrid
T. 91 800 54 65
www.aproperties.es

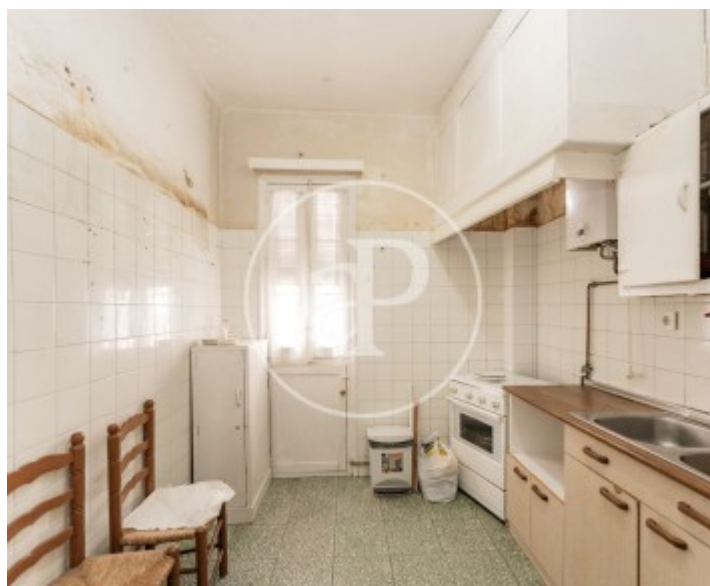
Goya, Madrid

REF. VM2403019



Goya, Madrid

REF. VM2403019





APROPERTIES
REAL ESTATE

Calle Serrano 60
28001 Madrid
T. 91 800 54 65
www.aproperties.es

Goya, Madrid

REF. VM2403019



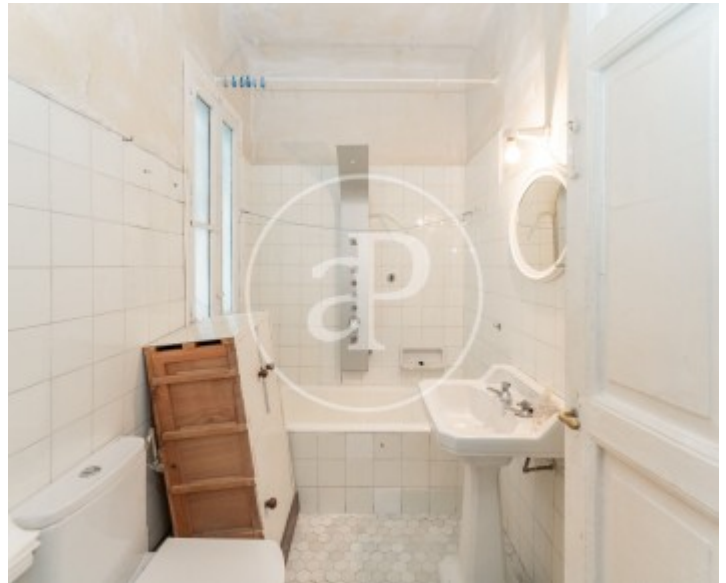


APROPERTIES
REAL ESTATE

Calle Serrano 60
28001 Madrid
T. 91 800 54 65
www.aproperties.es

Goya, Madrid

REF. VM2403019



The information about any property is not binding to any offer or contract. Any verbal or written declaration made by aProperties with regards to the value or condition of the property should not be considered accurate or factual. The pictures make reference to some parts of the property at the times that they were taken. The areas, dimensions and distances that are given are approximate and should be checked by the client. The images are computer generated and are just an approximate indication of the real appearance of the property; these may change at any time. The information with regards to the property may also change at any time.



For **more information** or
to make an appointment

apropertiesmadrid@aproperties.es
Tel: 91 800 54 65
www.aproperties.es