

Goya, Madrid

REF. AM2404067



## Flat for rent in Goya (Madrid)

### Features

- ✓ Heating
- ✓ Furnished
- ✓ Lift

Price

**1,500 €**

Surface

**45 m<sup>2</sup>**

Bedroom

**1**

Bathroom

**1**



**IMMEDIATE AVAILABILITY** The apartment is perfect for one person, maximum two.

It has a kitchen integrated to a living-dining room, with sofa-bed, Smart Tv and closet. The kitchen is equipped with all appliances. The bedroom, separate, has a double bed and two bedside tables. Despite being an interior, it has plenty of light as it overlooks a large courtyard. The entrance has a physical and electronic concierge. It also has an elevator. Available from one month of stay, consult price. Privileged area, one of the most exclusive streets in Madrid in the Salamanca neighborhood. Steps from the metro Lista and Manuel Becerra, with countless bus lines around. Can you

imagine living here?

**Contact us,**  
we will be happy to assist you,  
to offer you more details and information.



APROPERTIES  
REAL ESTATE

Calle Serrano 60  
28001 Madrid  
T. 91 800 54 65  
[www.aproproperties.es](http://www.aproproperties.es)

Goya, Madrid

REF. AM2404067







APROPERTIES  
REAL ESTATE

Calle Serrano 60  
28001 Madrid  
T. 91 800 54 65  
[www.aproperties.es](http://www.aproperties.es)

Goya, Madrid

REF. AM2404067





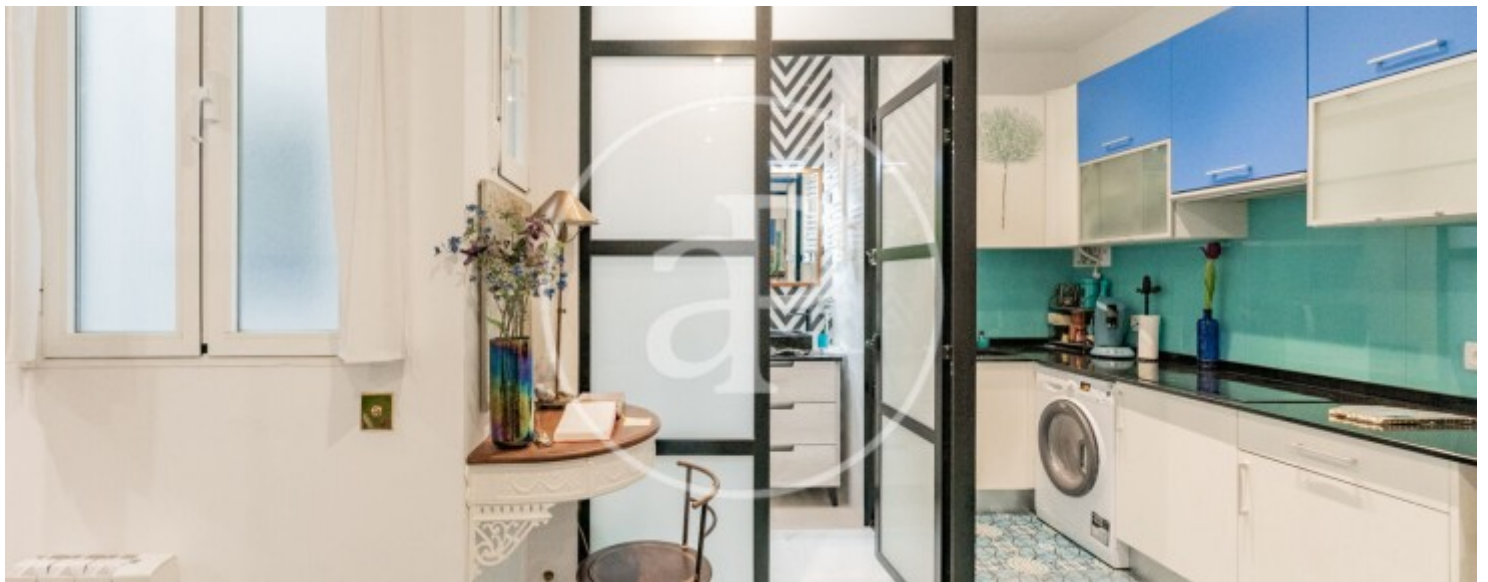
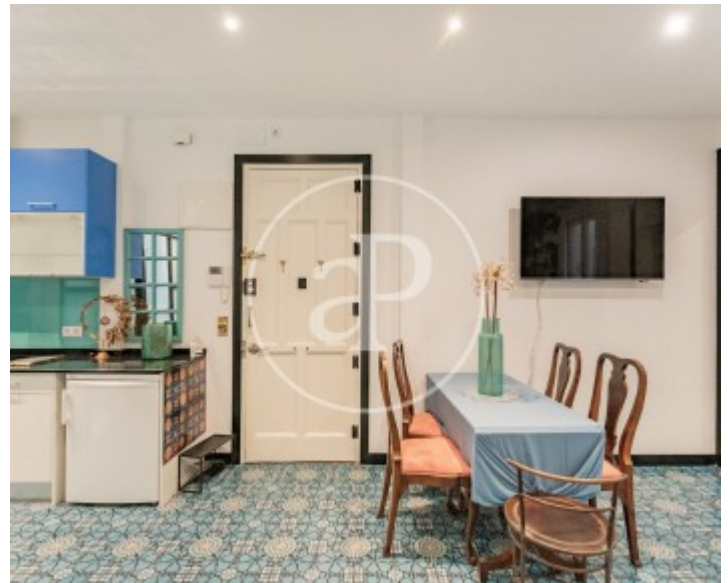


APROPERTIES  
REAL ESTATE

Calle Serrano 60  
28001 Madrid  
T. 91 800 54 65  
[www.aproproperties.es](http://www.aproproperties.es)

Goya, Madrid

REF. AM2404067







**APROPERTIES**  
REAL ESTATE

Calle Serrano 60  
28001 Madrid  
T. 91 800 54 65  
[www.aproperties.es](http://www.aproperties.es)

Goya, Madrid

REF. AM2404067



The information about any property is not binding to any offer or contract. Any verbal or written declaration made by aProperties with regards to the value or condition of the property should not be considered accurate or factual. The pictures make reference to some parts of the property at the times that they were taken. The areas, dimensions and distances that are given are approximate and should be checked by the client. The images are computer generated and are just an approximate indication of the real appearance of the property; these may change at any time. The information with regards to the property may also change at any time.



For **more information** or  
to make an appointment

[apropertiesmadrid@aproperties.es](mailto:apropertiesmadrid@aproperties.es)  
Tel: 91 800 54 65  
[www.aproperties.es](http://www.aproperties.es)