

Goya, Madrid

REF. VM2606090

# Penthouse for sale in General Pardiñas

## Features

- ✓ Views
- ✓ Heating
- ✓ Furnished
- ✓ AACC
- ✓ Terrace
- ✓ Lift
- ✓ Concierge

Price

**1,175,000 €**

Surface

**83 m<sup>2</sup>**

Bedrooms

**2**

Bathrooms

**2**



**aProperties Real Estate presents this exclusive, newly renovated penthouse located on General Pardiñas street, in the heart of Salamanca neighborhood, one of the most sought-after areas of Madrid.**

With 86 m<sup>2</sup> built and a magnificent 20 m<sup>2</sup> terrace, the house has been designed for those looking for an elegant residence, ready to move in and enjoy the Madrid lifestyle with all the comforts. The property has two bedrooms and two bathrooms, with a careful distribution that maximizes light and space. The semi-integrated kitchen is fully equipped with high-capacity furniture and high-end appliances, and connects to a cozy living room that opens onto a fantastic

terrace with water and light, perfect for enjoying afternoons and evenings outdoors. It is delivered fully furnished and finished with first-class materials. Living in the neighborhood of Salamanca means enjoying a privileged location, surrounded by exclusive boutiques, restaurants and all the necessary services for everyday life. An ideal home for those who value design, privacy and an exceptional location in the heart of Madrid. A true whim for the most sybarites. At aProperties Real Estate we will be happy to accompany you and show you one of the most attractive proposals in the...

**Contact us,**  
we will be happy to assist you,  
to offer you more details and information.

Goya, Madrid

REF. VM2606090



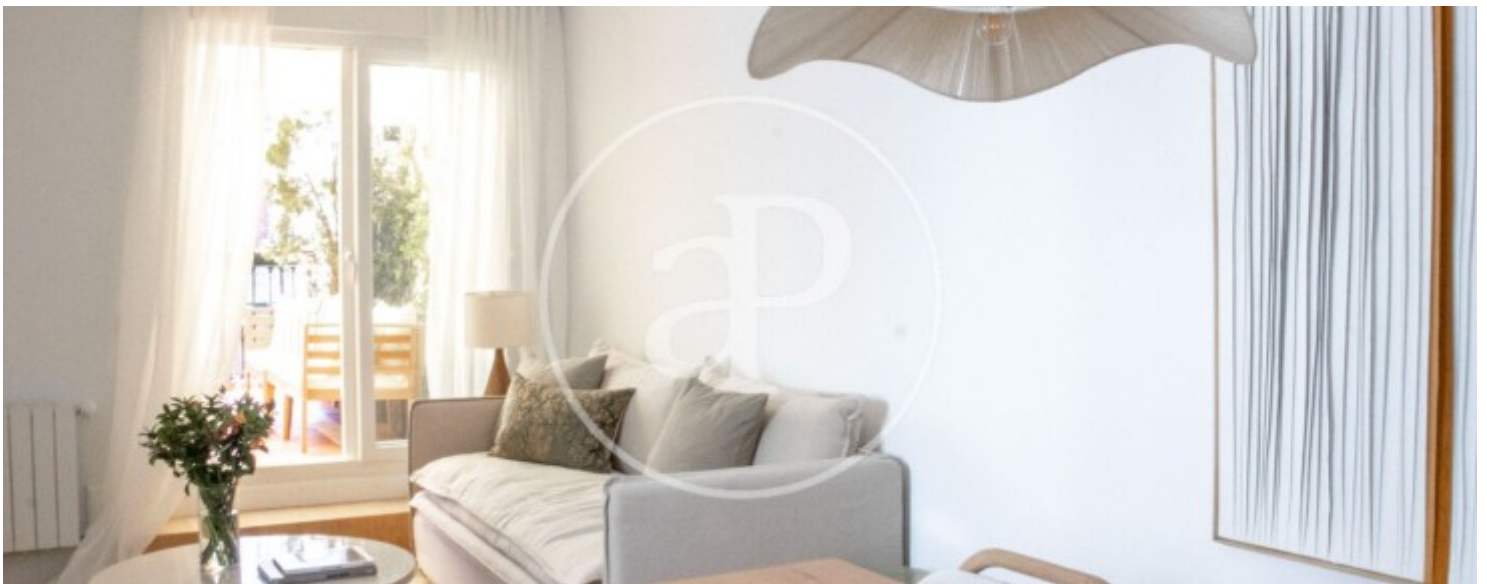
Goya, Madrid

REF. VM2606090



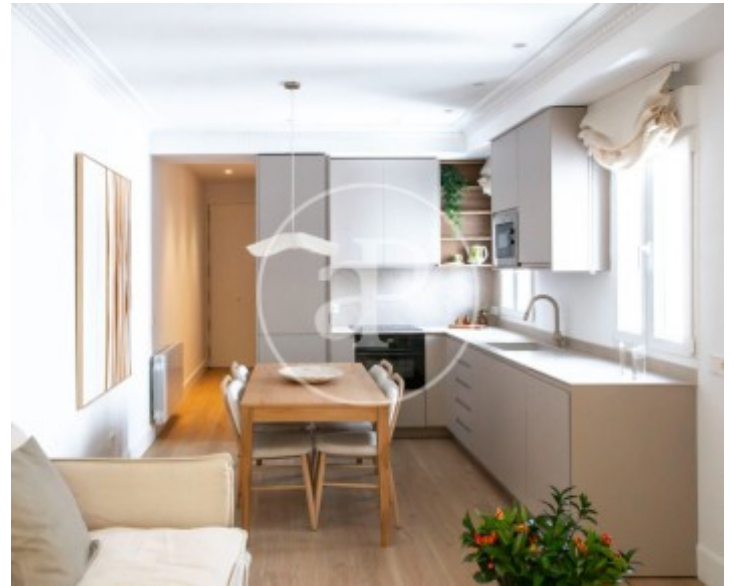
Goya, Madrid

REF. VM2606090



Goya, Madrid

REF. VM2606090



The information about any property is not binding to any offer or contract. Any verbal or written declaration made by aProperties with regards to the value or condition of the property should not be considered accurate or factual. The pictures make reference to some parts of the property at the times that they were taken. The areas, dimensions and distances that are given are approximate and should be checked by the client. The images are computer generated and are just an approximate indication of the real appearance of the property; these may change at any time. The information with regards to the property may also change at any time.

For **more information** or  
to make an appointment

[apropertiesmadrid@aproperties.es](mailto:apropertiesmadrid@aproperties.es)  
Tel: 91 800 54 65  
[www.aproperties.es](http://www.aproperties.es)