

Goya, Madrid

REF. VM2512019

Apartment for sale in Conde Peñalver

Features

- ✓ Heating
- ✓ AACC
- ✓ Lift
- ✓ Concierge

Price
785,000 €

Surface
68 m²

Bedrooms
2

Bathrooms
2



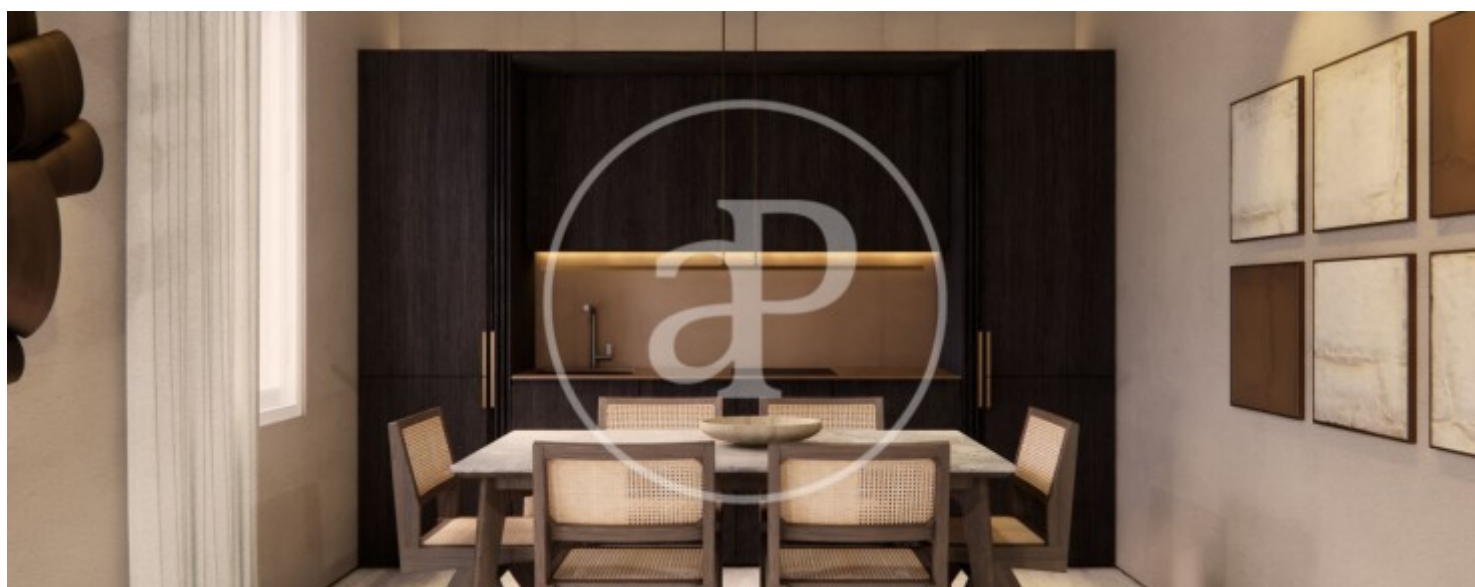
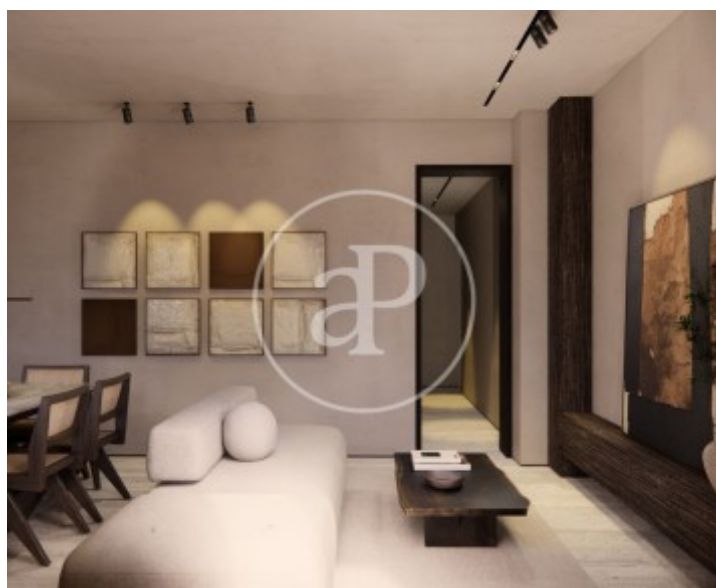
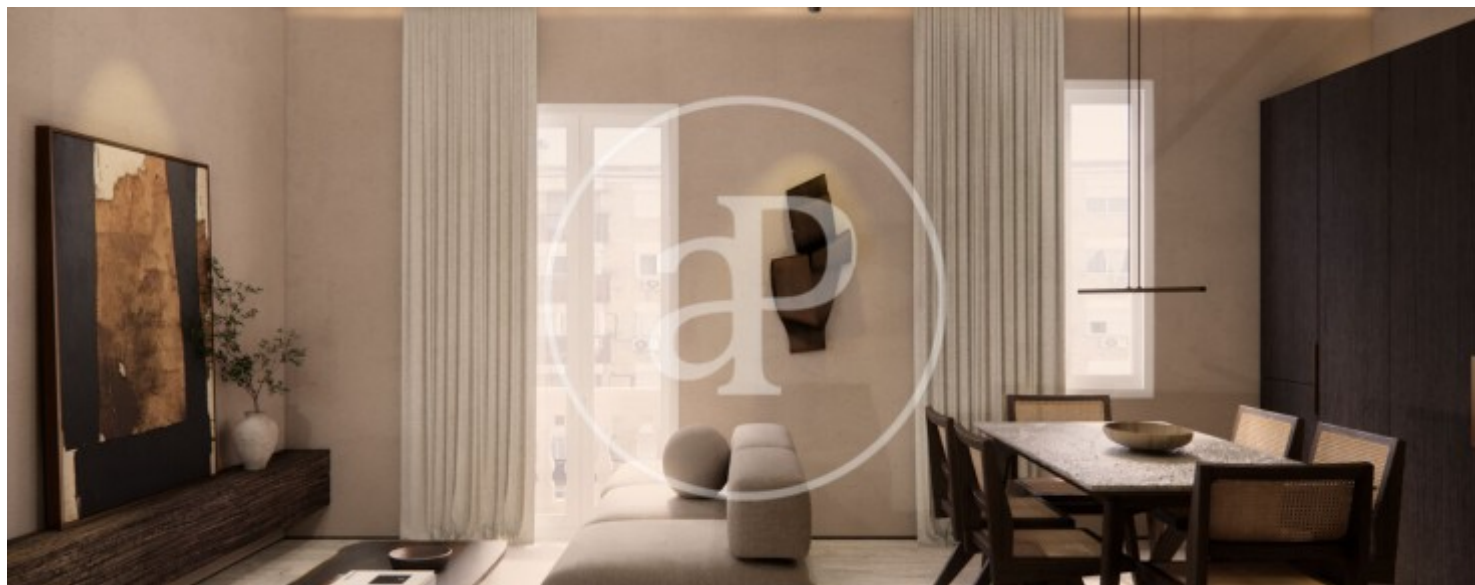
In the heart of the exclusive neighborhood of Salamanca, on the prestigious street Conde de Peñalver, APROPERTIES offers magnificent located in a beautiful classic estate that preserves all the architectural charm of the area. Located on a fourth interior floor, it enjoys exceptional luminosity throughout the day thanks to its magnificent orientation. The property is presented to reform, offering extraordinary potential for creating a custom home. Its spaces allow a versatile and current redistribution, easily adapting to a modern and functional design without giving up the stately character of the building. A unique opportunity to personalize a home with soul, in one of the most sought-after and elegant addresses in Madrid. Ideal both for those looking for their perfect residence and for

investors who value prime locations with high revaluation potential. We have a reform project for consultation of interested clients. The pictures that appear are rénder that show the final state of the house once reformed. The location is undoubtedly one of its great attractions. The Salamanca district is renowned for its quality of life, its elegant atmosphere and its wide range of services. A few steps away are some of the best boutiques, restaurants, cafes and local shops, as well as supermarkets, health centres and numerous day-to-day services. The area is excellently connected,...

Contact us,
we will be happy to assist you,
to offer you more details and information.

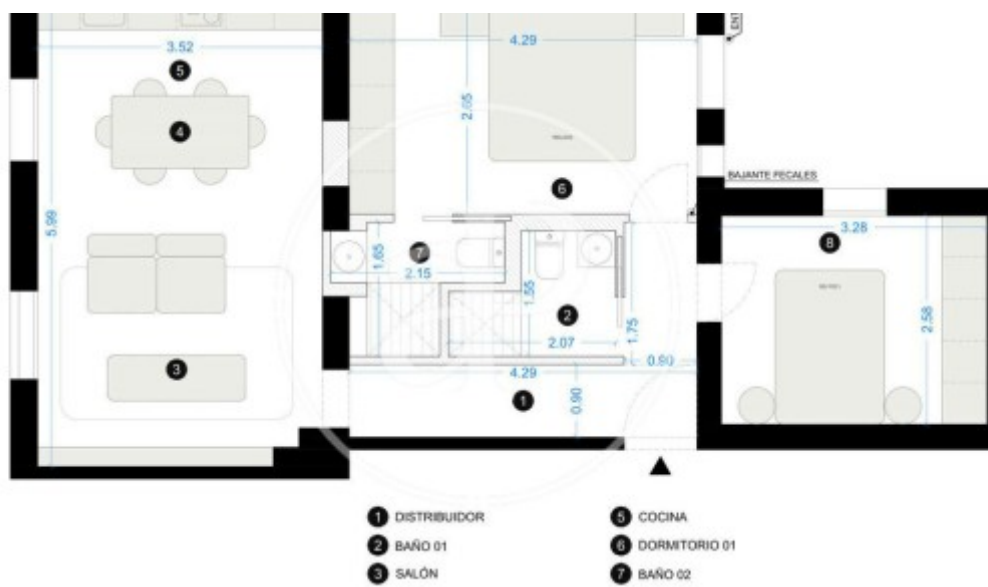
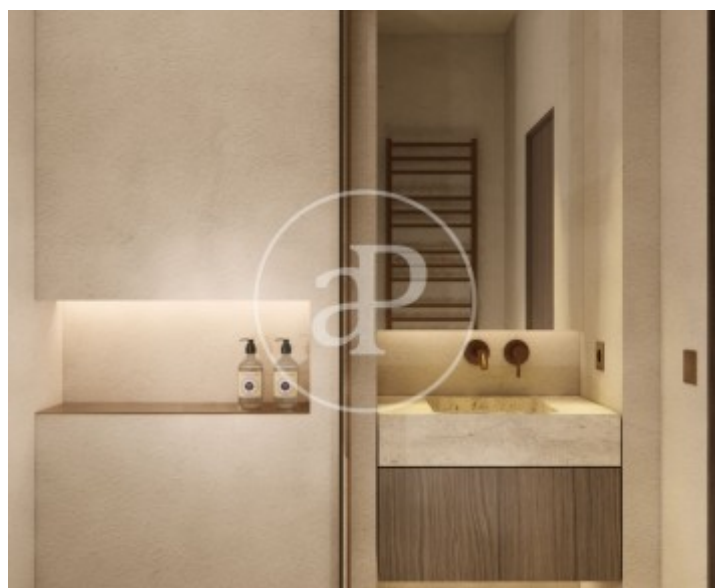
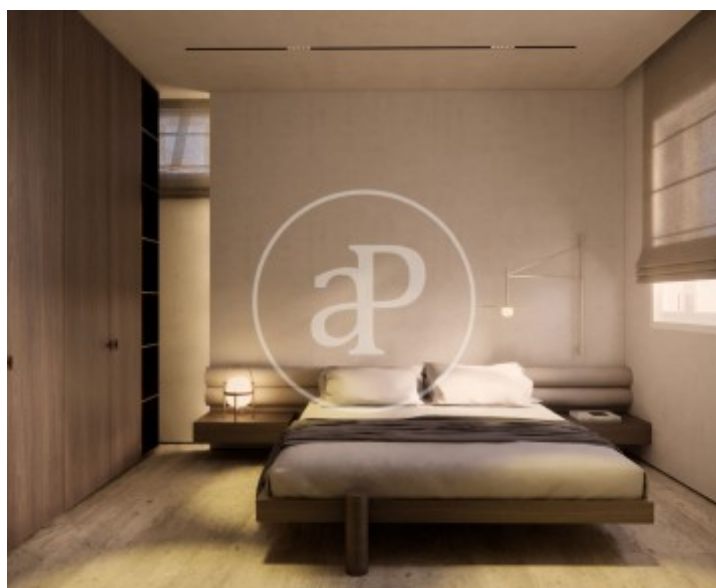
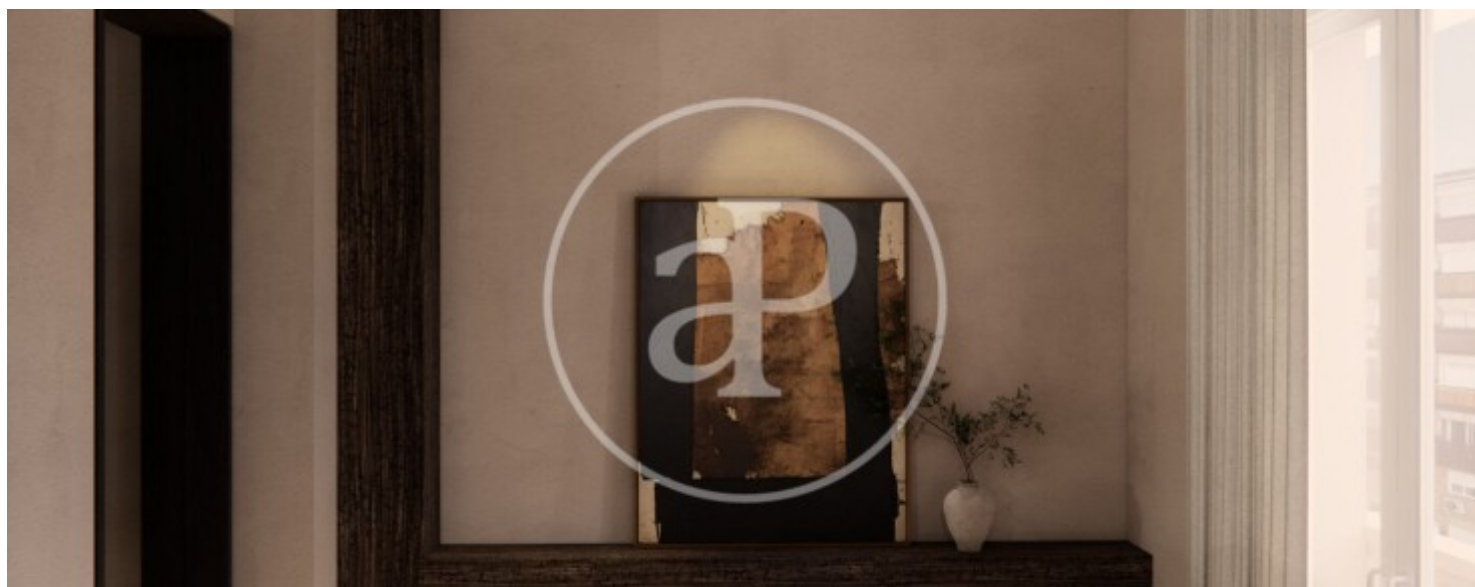
Goya, Madrid

REF. VM2512019



Goya, Madrid

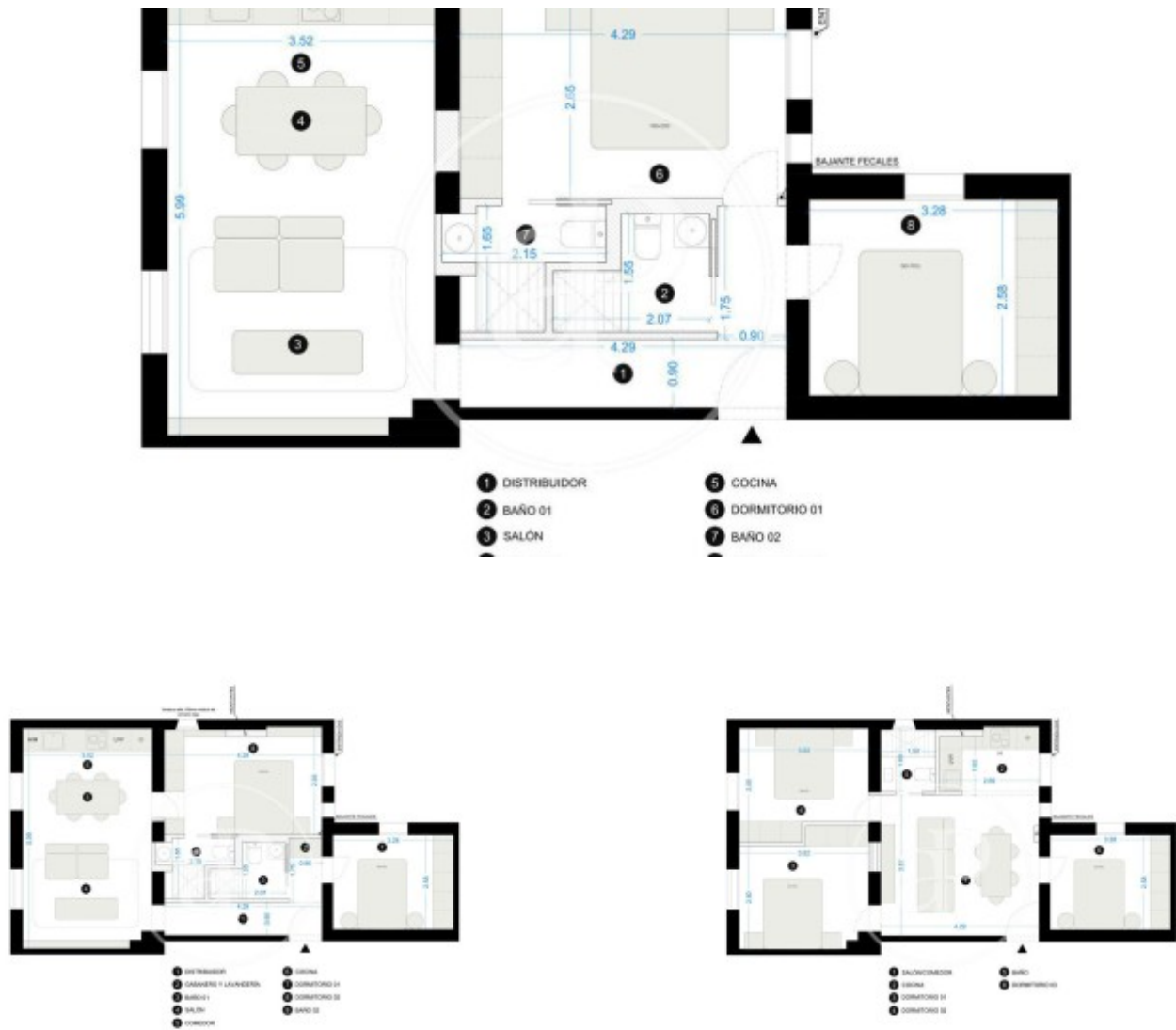
REF. VM2512019





Goya, Madrid

REF. VM2512019



The information about any property is not binding to any offer or contract. Any verbal or written declaration made by aProperties with regards to the value or condition of the property should not be considered accurate or factual. The pictures make reference to some parts of the property at the times that they were taken. The areas, dimensions and distances that are given are approximate and should be checked by the client. The images are computer generated and are just an approximate indication of the real appearance of the property; these may change at any time. The information with regards to the property may also change at any time.

For **more information** or
to make an appointment

apropertiesmadrid@aproperties.es
Tel: 91 800 54 65
www.aproperties.es