

Goya, Madrid

REF. VM2607025

Exterior flat for sale in Salamanca

Features

- ✓ Views
- ✓ Heating
- ✓ Furnished
- ✓ AACC
- ✓ Terrace
- ✓ Lift
- ✓ Concierge
- ✓ Has parking

Surface

184 m²

Bedrooms

3

Bathrooms

2



Price

1,899,000 €

Flat renovated by an interior design studio on Don Ramón de la Cruz Street, in the heart of the Goya neighborhood, Salamanca district.

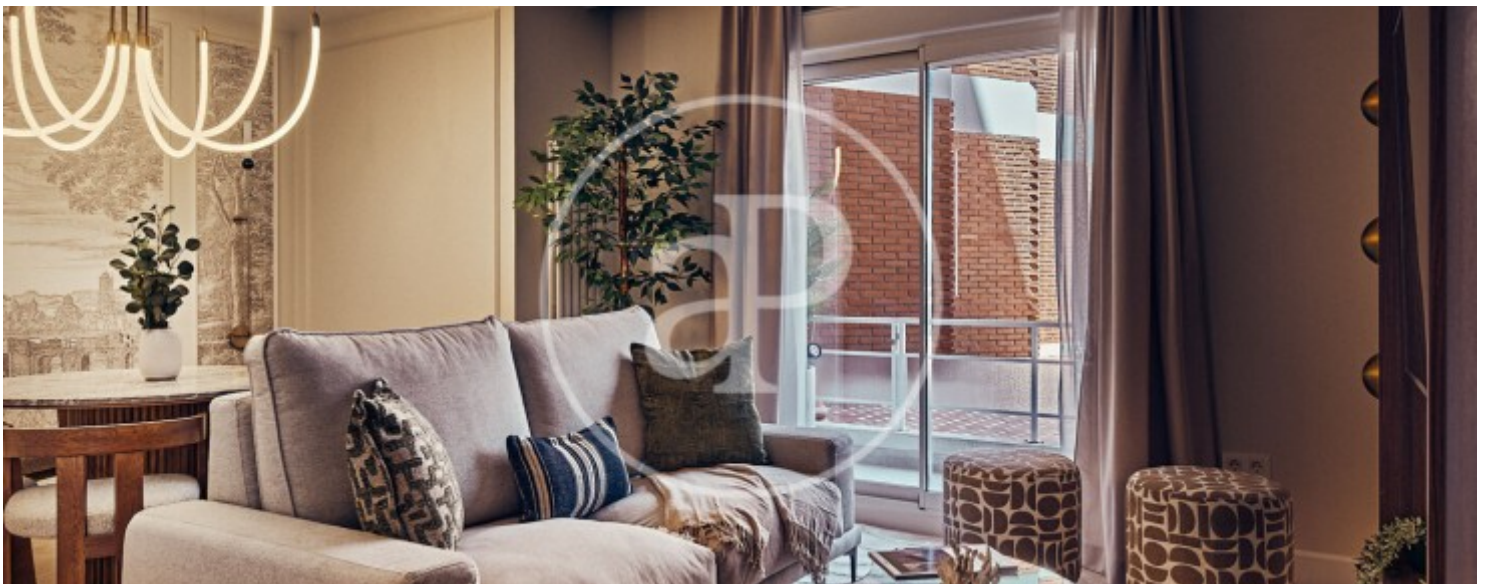
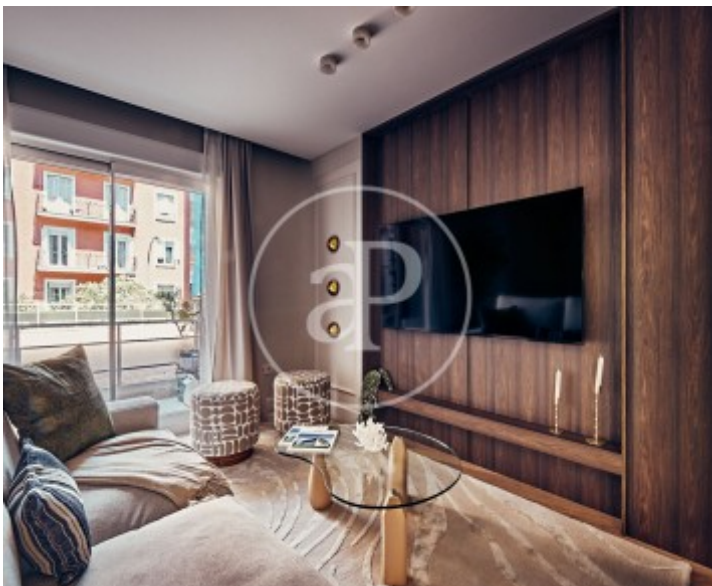
This is an exterior property on the first floor, with 112 m² smartly distributed and a design that combines warmth and sophistication. Its location places it just a step away from the Golden Mile, with Serrano and Plaza de Colón five minutes away, and Retiro Park accessible in just ten. The house is organized into three double bedrooms and two full bathrooms, all with marble finishes, noble woods, and brass details that define the comprehensive renovation. The living-dining room opens onto a bright terrace, ideal

for day-to-day life or for receiving guests, while the kitchen, fully equipped and with a central island, connects to an independent laundry room that provides functionality without detracting from the elegance of the whole property. Elevator, parking, and air conditioning complete a home designed for those looking for the convenience of a brand-new space without giving up the character of a stately building. Living in Goya means having all of Madrid at hand: boutiques, specialty cafes, and established restaurants coexist with the tranquility of a top-tier residential environment. It is a...

Contact us,
we will be happy to assist you,
to offer you more details and information.

Goya, Madrid

REF. VM2607025



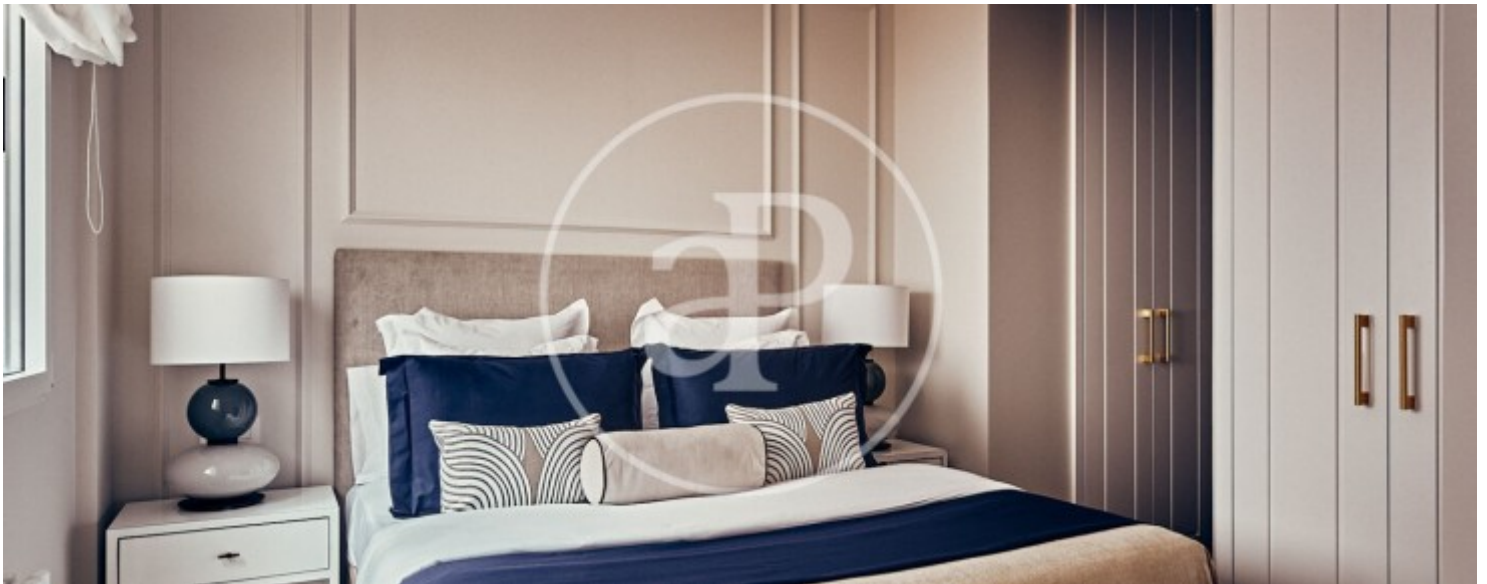
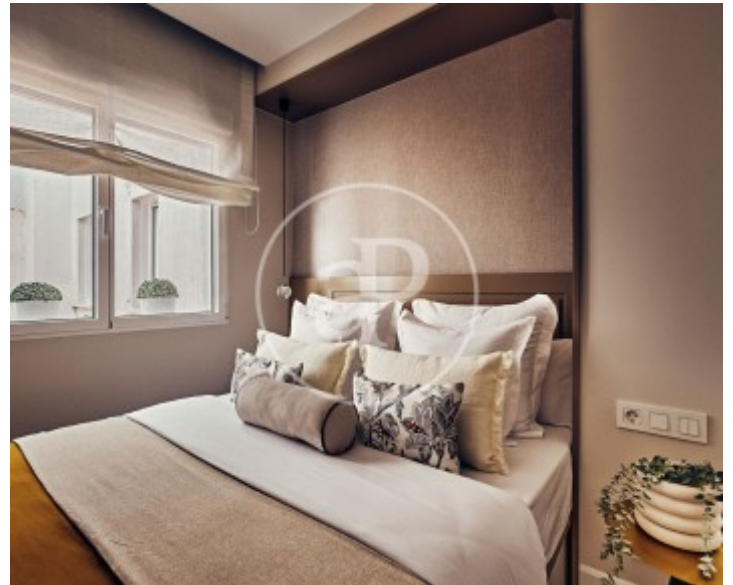
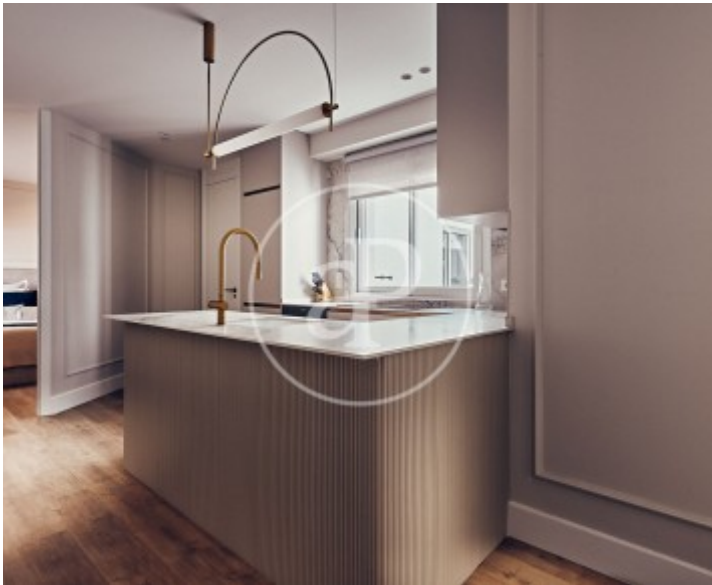
Goya, Madrid

REF. VM2607025



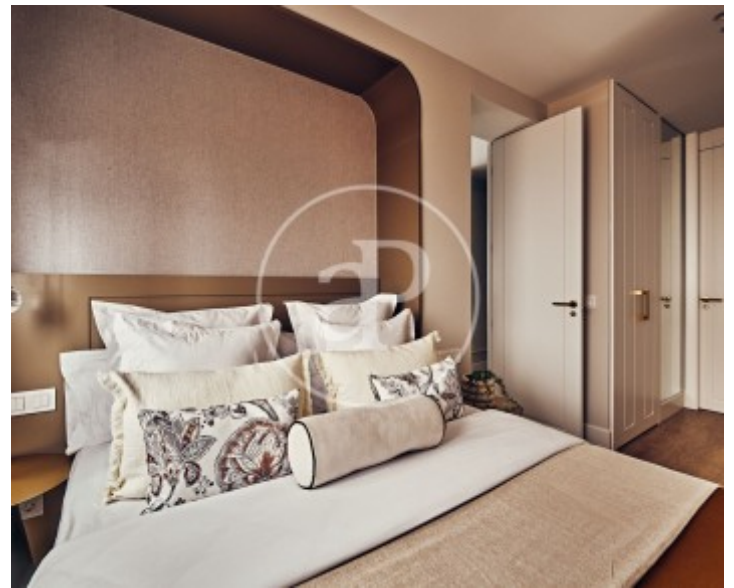
Goya, Madrid

REF. VM2607025



Goya, Madrid

REF. VM2607025



The information about any property is not binding to any offer or contract. Any verbal or written declaration made by aProperties with regards to the value or condition of the property should not be considered accurate or factual. The pictures make reference to some parts of the property at the times that they were taken. The areas, dimensions and distances that are given are approximate and should be checked by the client. The images are computer generated and are just an approximate indication of the real appearance of the property; these may change at any time. The information with regards to the property may also change at any time.

For **more information** or
to make an appointment

apropertiesmadrid@aproperties.es
Tel: 91 800 54 65
www.aproperties.es