

Goya, Madrid

REF. VM2603025

Flat for sale in the Barrio de Salamanca

Features

- ✓ Heating
- ✓ AACC
- ✓ Lift
- ✓ Furnished
- ✓ Terrace
- ✓ Concierge

Price

1,800,000 €

Surface

155 m²

Bedrooms

2

Bathrooms

3



Exclusive luxury house of 155 m2 with terrace in chaflán Elegant property of 155 m2 according to cadastral that combines design, comfort and privacy.

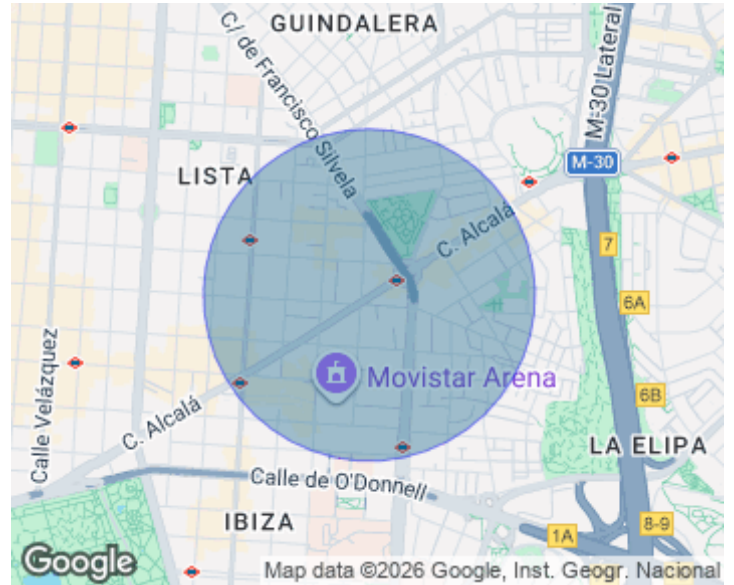
It has two large en-suite bedrooms with storage space, plus an additional toilet. It has a spectacular living room in Chaflán with direct access to the terrace, which along with its large windows floods the house with natural light. The elegant fully equipped kitchen with state-of-the-art appliances features a beautiful island as its central focus. The house is completely renovated and stands out for its noble materials, excellent finishes and a wide and sophisticated distribution. Located in good estate

with concierge service, ideal for those seeking exclusivity, tranquility and quality of life. The area of Goya, within the exclusive Barrio de Salamanca, is one of the most privileged enclaves in the capital. Its excellent location, close to the emblematic Retiro Park and a few meters from the Golden Mile, and the advantage of being able to enjoy on foot the best restaurants, shops, leisure areas, schools, hospitals, green areas and all necessary services, make it one of the most prestigious and sought-after areas of Madrid, both as a common housing area and also to obtain a high return on an...

Contact us,
we will be happy to assist you,
to offer you more details and information.

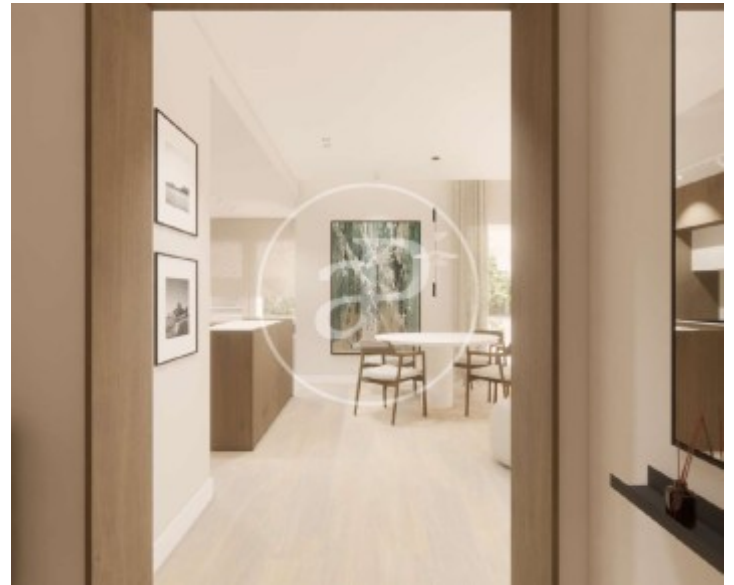
Goya, Madrid

REF. VM2603025



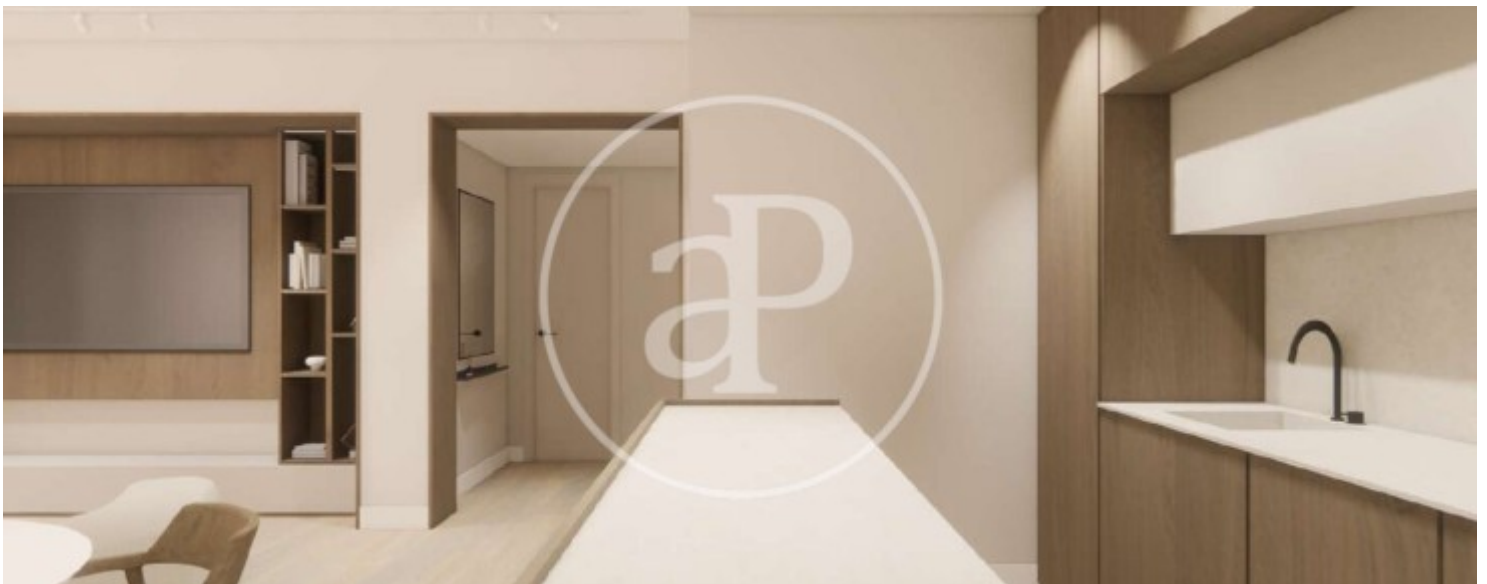
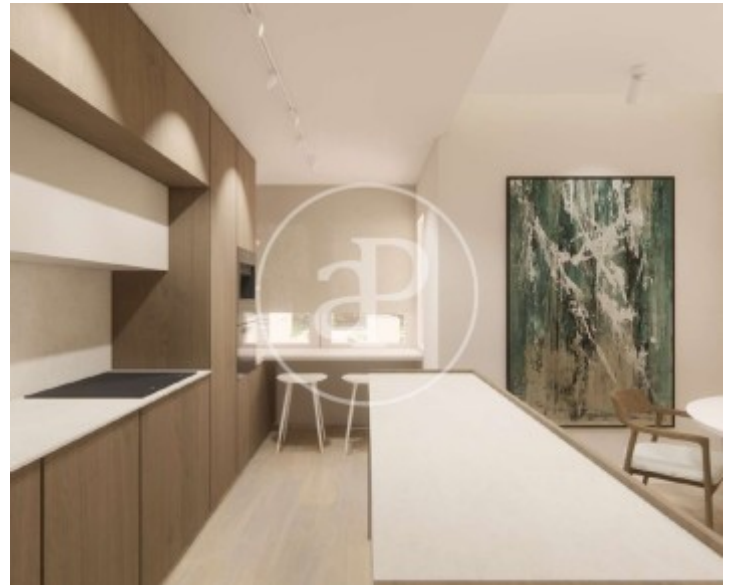
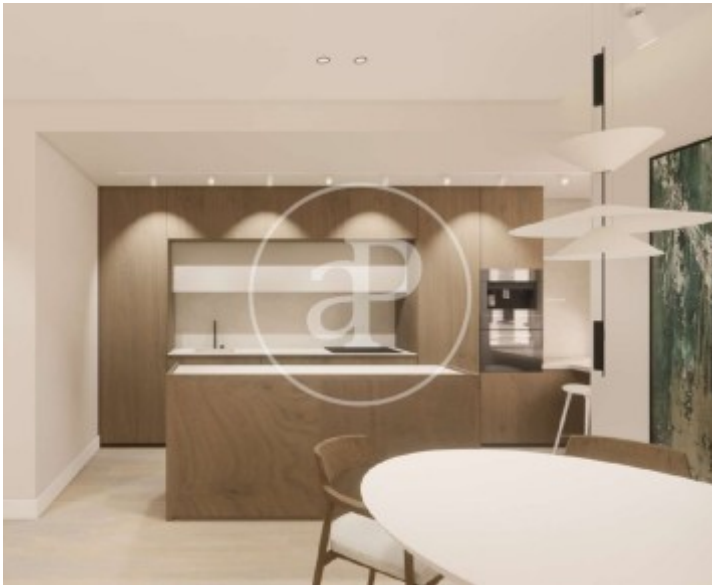
Goya, Madrid

REF. VM2603025



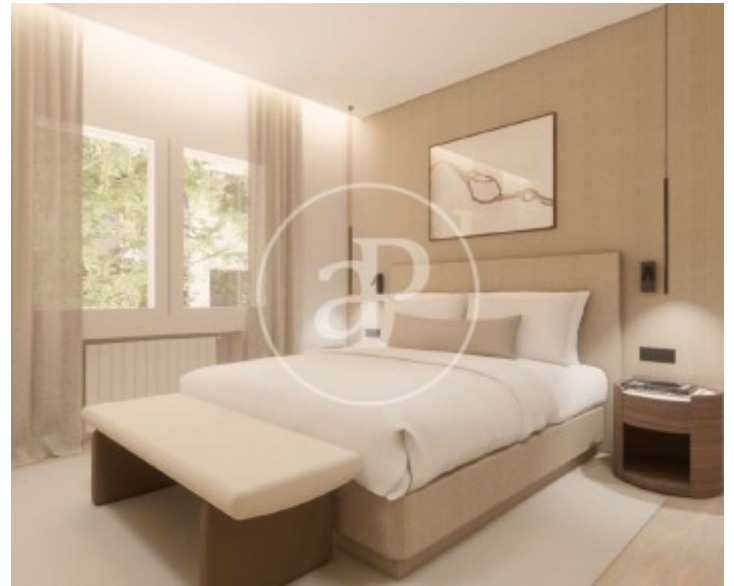
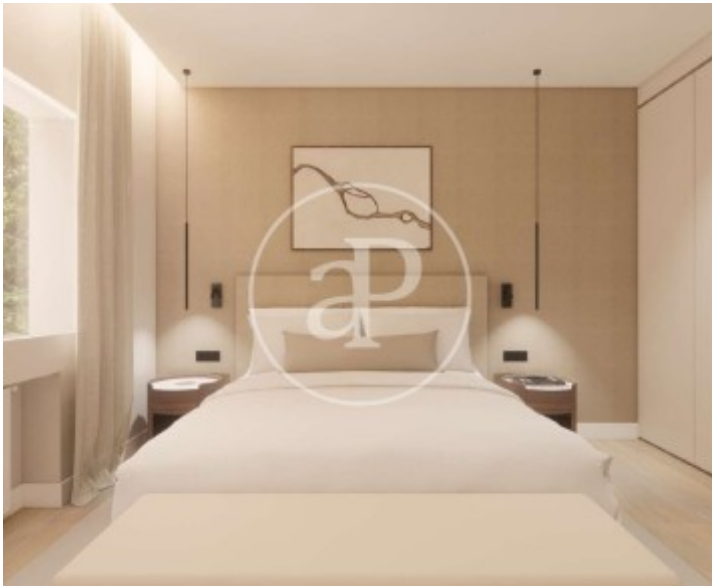
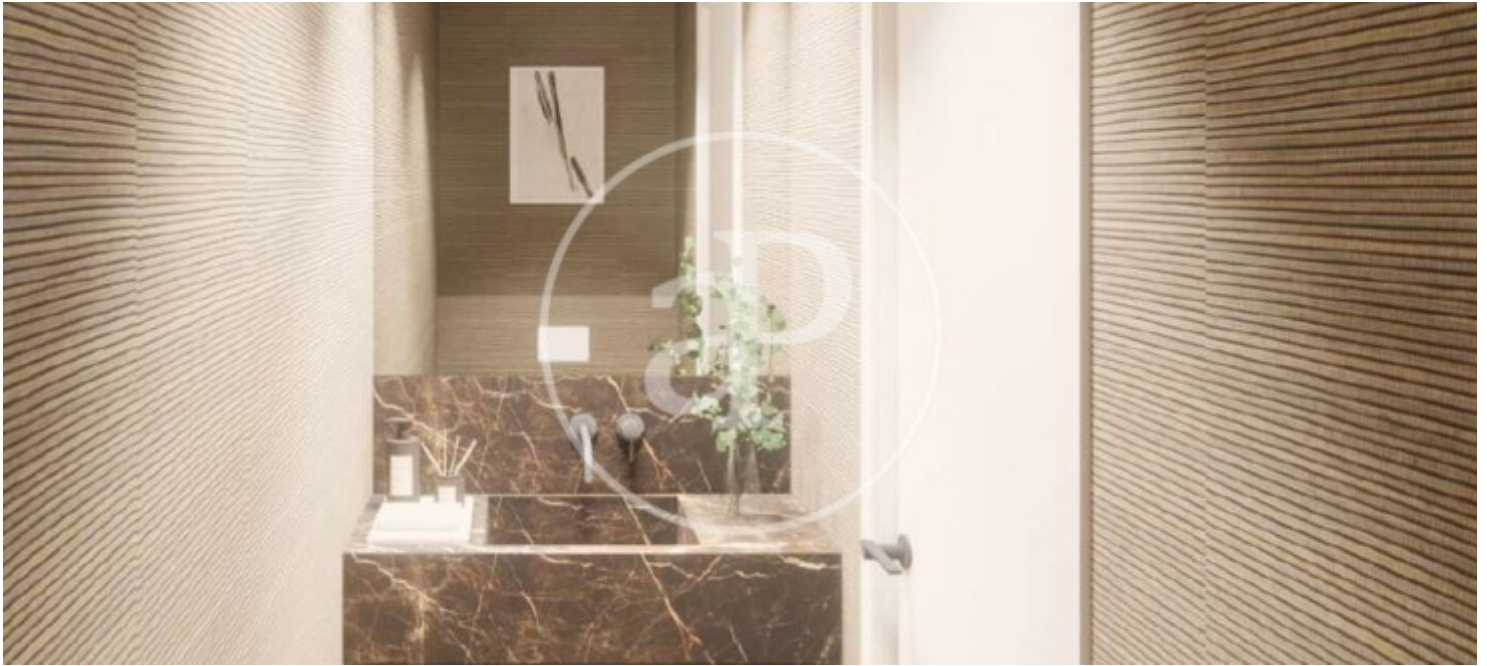
Goya, Madrid

REF. VM2603025



Goya, Madrid

REF. VM2603025



The information about any property is not binding to any offer or contract. Any verbal or written declaration made by aProperties with regards to the value or condition of the property should not be considered accurate or factual. The pictures make reference to some parts of the property at the times that they were taken. The areas, dimensions and distances that are given are approximate and should be checked by the client. The images are computer generated and are just an approximate indication of the real appearance of the property; these may change at any time. The information with regards to the property may also change at any time.

For **more information** or
to make an appointment

apropertiesmadrid@aproperties.es
Tel: 91 800 54 65
www.aproperties.es