

Goya, Madrid

REF. VM2511001

Penthouse for sale in Goya

Features

- ✓ Views
- ✓ Heating
- ✓ Furnished
- ✓ Boxroom
- ✓ AACC
- ✓ Terrace
- ✓ Lift
- ✓ Concierge

Surface

140 m²

Bedrooms

3

Bathrooms

2



Price

1,500,000 €

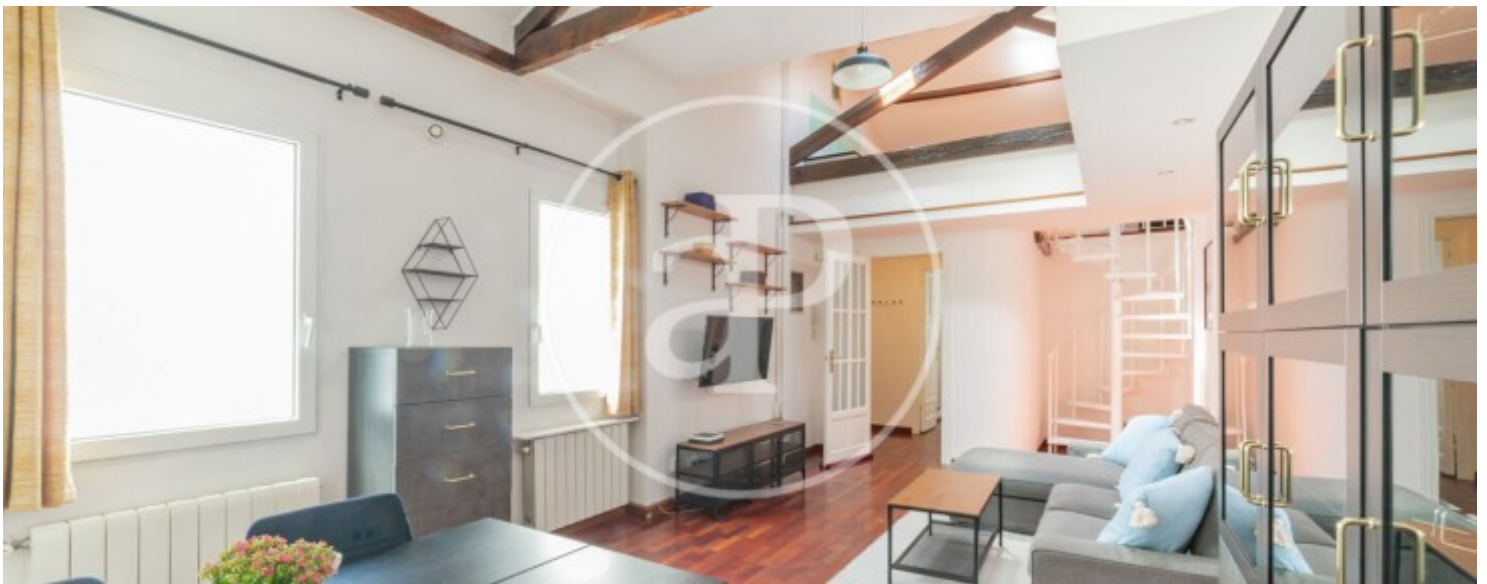
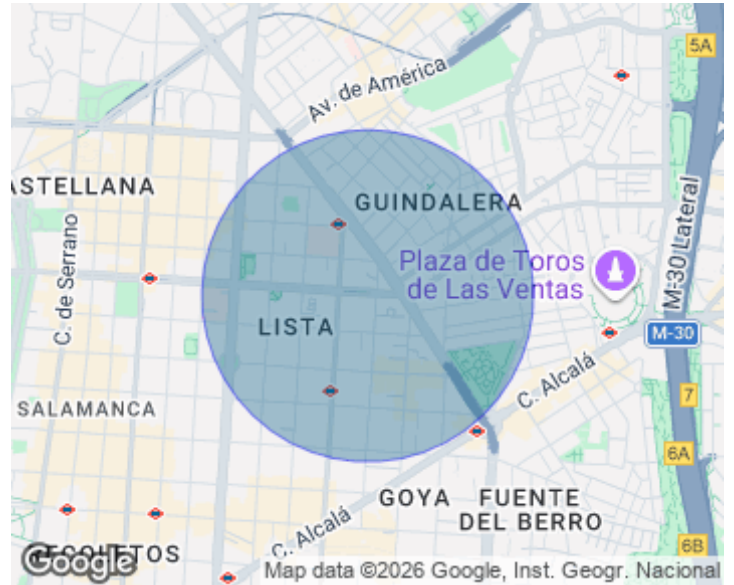
In the heart of the prestigious Salamanca neighborhood, located in the area of Goya, a few meters from the Retiro Park, APROPERTIES offers for sale this exclusive penthouse on a seventh floor exterior double height with a magnificent terrace from which unobstructed views are contemplated. The house of extraordinary luminosity has 140 m² of constructed area of which 20m² correspond to the terrace. It is ready to move in, although it would allow an update or redistribution of spaces, according to the client's taste. The sleeping area is made up of 3 bedrooms, of which the master bedroom has an en suite bathroom and direct access to the terrace. A second double bedroom and very bright is located on the main floor and the third bedroom are accommodated in the double-height attic space with access by

internal staircase that has the house. The house also has a multifunctional room on the top floor, which can be used as a bedroom, work area, library, etc. The day area integrates a spacious and bright living room with separate kitchen and a second full bathroom. The property in which this magnificent penthouse is located is a beautiful classic building with balconies and elegant stately hall with very well maintained common areas. It has concierge service, elevator and a storage room in the building itself. It is undoubtedly an excellent opportunity to live in the exclusive Salamanca...

Contact us,
we will be happy to assist you,
to offer you more details and information.

Goya, Madrid

REF. VM2511001



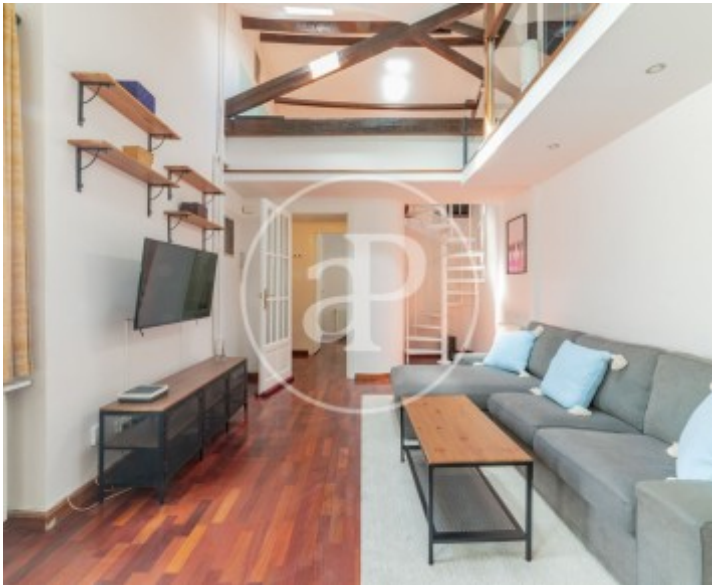
Goya, Madrid

REF. VM2511001



Goya, Madrid

REF. VM2511001



Goya, Madrid

REF. VM2511001



The information about any property is not binding to any offer or contract. Any verbal or written declaration made by aProperties with regards to the value or condition of the property should not be considered accurate or factual. The pictures make reference to some parts of the property at the times that they were taken. The areas, dimensions and distances that are given are approximate and should be checked by the client. The images are computer generated and are just an approximate indication of the real appearance of the property; these may change at any time. The information with regards to the property may also change at any time.

For **more information** or
to make an appointment

apropertiesmadrid@aproperties.es
Tel: 91 800 54 65
www.aproperties.es