

Goya, Madrid

REF. AM2202053

# Flat for rent in Goya brand new

## Features

- ✓ Views
- ✓ Furnished
- ✓ Lift
- ✓ Has parking
- ✓ Heating
- ✓ AACC
- ✓ Concierge

Price

**3,200 €**

Surface

**140 m<sup>2</sup>**

Bedrooms

**2**

Bathrooms

**3**



## Exterior flat, very bright, furnished and fully equipped located on a fifth floor.

It is completely refurbished and brand new in Barrio de Salamanca, Goya with parking space included. The property has 140 m<sup>2</sup> and an excellent distribution: two double bedrooms each one with its own bathroom en suite, guest toilet, spacious and bright living-dining room. Accessed via an entrance hall with a cupboard, a guest toilet, and a modern open-plan kitchen, fully equipped with kitchenware, a cosy bench and small tables. Next to the kitchen there is a practical utility room with a pleasant balcony overlooking a bright private courtyard. There are two spacious double bedrooms

with fitted wardrobes and modern en-suite bathrooms with shower. The decorative elements of the flat, the furniture, the printed wallpaper on the walls, the oak wood partition walls and the exposed beams give it personality and make its spaces unique and welcoming. The property is very quiet, has a doorman and lift. The location is privileged, in the heart of the Salamanca district, in a very quiet residential area, with all the amenities and a wide range of services, shops, leisure with the most fashionable restaurants in the city and a few steps from the shopping areas of Serrano and Goya....

**Contact us,**  
we will be happy to assist you,  
to offer you more details and information.

Goya, Madrid

REF. AM2202053



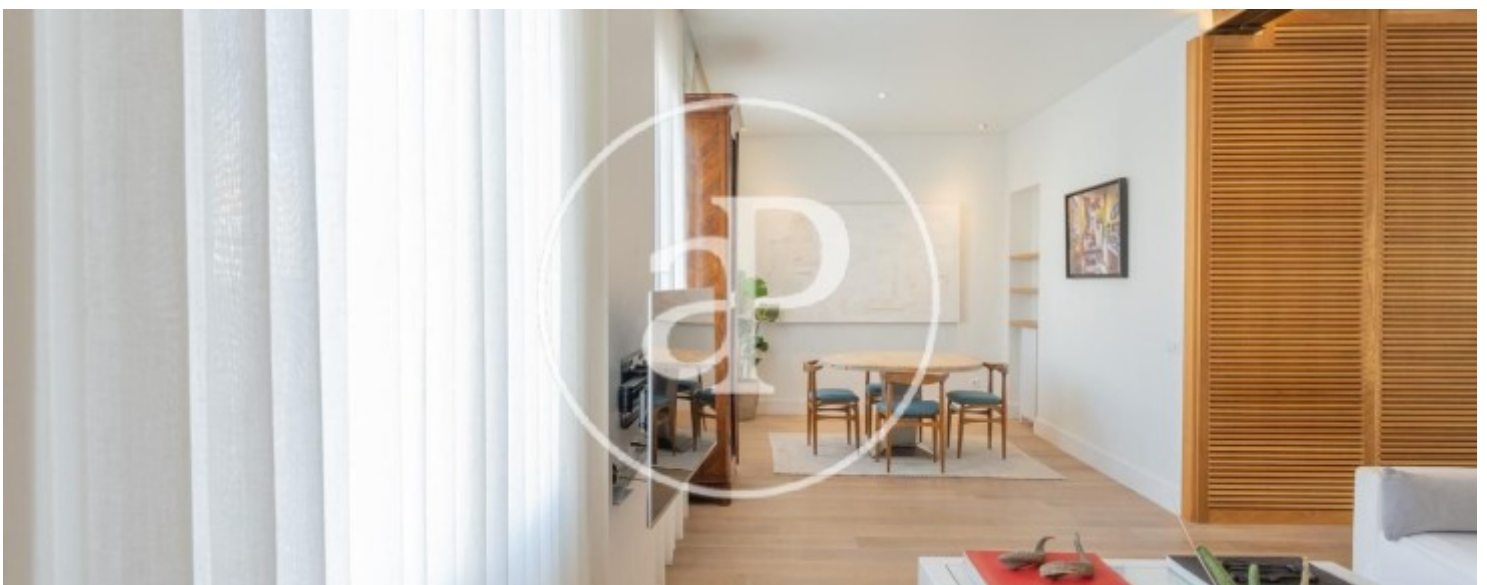
Goya, Madrid

REF. AM2202053



Goya, Madrid

REF. AM2202053



Goya, Madrid

REF. AM2202053



The information about any property is not binding to any offer or contract. Any verbal or written declaration made by aProperties with regards to the value or condition of the property should not be considered accurate or factual. The pictures make reference to some parts of the property at the times that they were taken. The areas, dimensions and distances that are given are approximate and should be checked by the client. The images are computer generated and are just an approximate indication of the real appearance of the property; these may change at any time. The information with regards to the property may also change at any time.

For **more information** or  
to make an appointment

[apropertiesmadrid@aproperties.es](mailto:apropertiesmadrid@aproperties.es)  
Tel: 91 800 54 65  
[www.aproperties.es](http://www.aproperties.es)