



Goya, Madrid

REF. VM2507048

Flat for sale in Goya

Features

- ✓ Views
- ✓ Heating
- ✓ AACC
- ✓ Lift

Surface

138 m²

Bedrooms

3

Bathrooms

3

Price

1,645,000 €



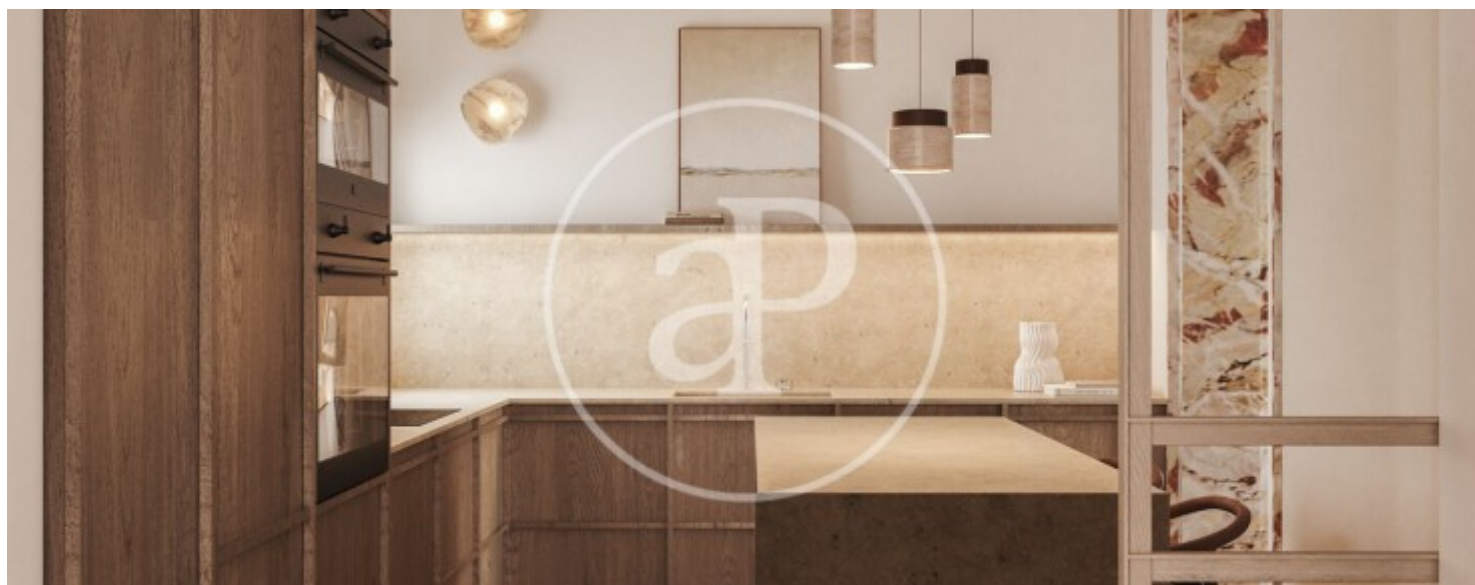
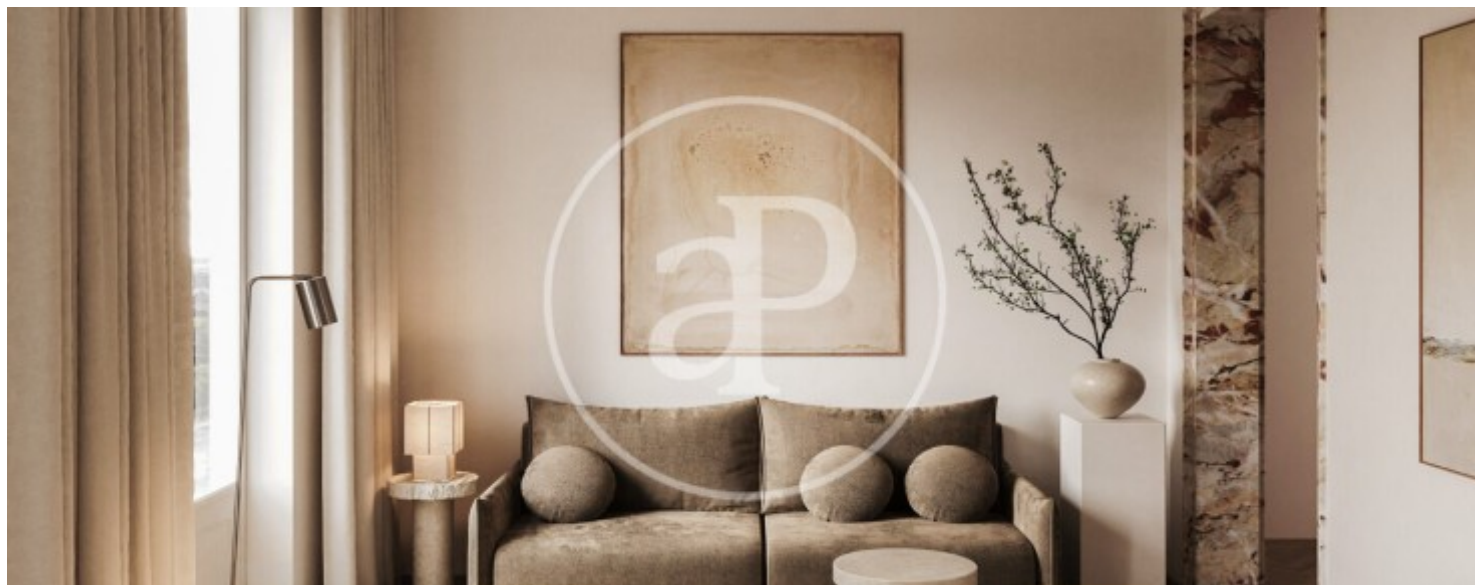
In the prestigious Salamanca neighbourhood, in one of the most emblematic streets of the capital, Calle Alcalá as it passes through the area of Goya, APROPERTIES offers for sale this magnificent property located in a beautiful classic building from the beginning of the 20th century, on a third exterior floor with extraordinary luminosity thanks to its south orientation and its large windows and balconies through which a wonderful natural light filters in. It has 138 m² constructed and is in a state to be refurbished, highlighting its three-metre ceilings and its rooms, open to the main façade and to two very luminous interior courtyards. We have a refurbishment project in which the spaces are distributed in an exterior day area formed by a living-dining room with two balconies and a

semi-open kitchen, and the night area formed by 2/3 bedrooms and 3 bathrooms, two of them en suite. The photos correspond to renders that reproduce the final state of the house once the renovation process has been completed. The area of Goya, within the exclusive Salamanca neighbourhood, is one of the most privileged enclaves in the capital. Its excellent location, close to the emblematic Retiro Park and just a few metres from the Golden Mile, and the advantage of being within walking distance of the best restaurants, shops, leisure areas, schools, hospitals, green areas and all the necessary...

Contact us,
we will be happy to assist you,
to offer you more details and information.

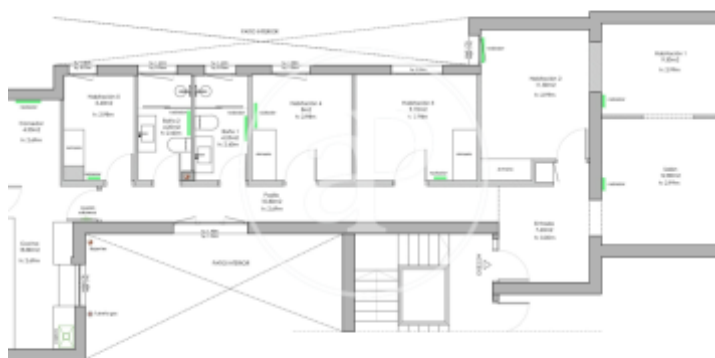
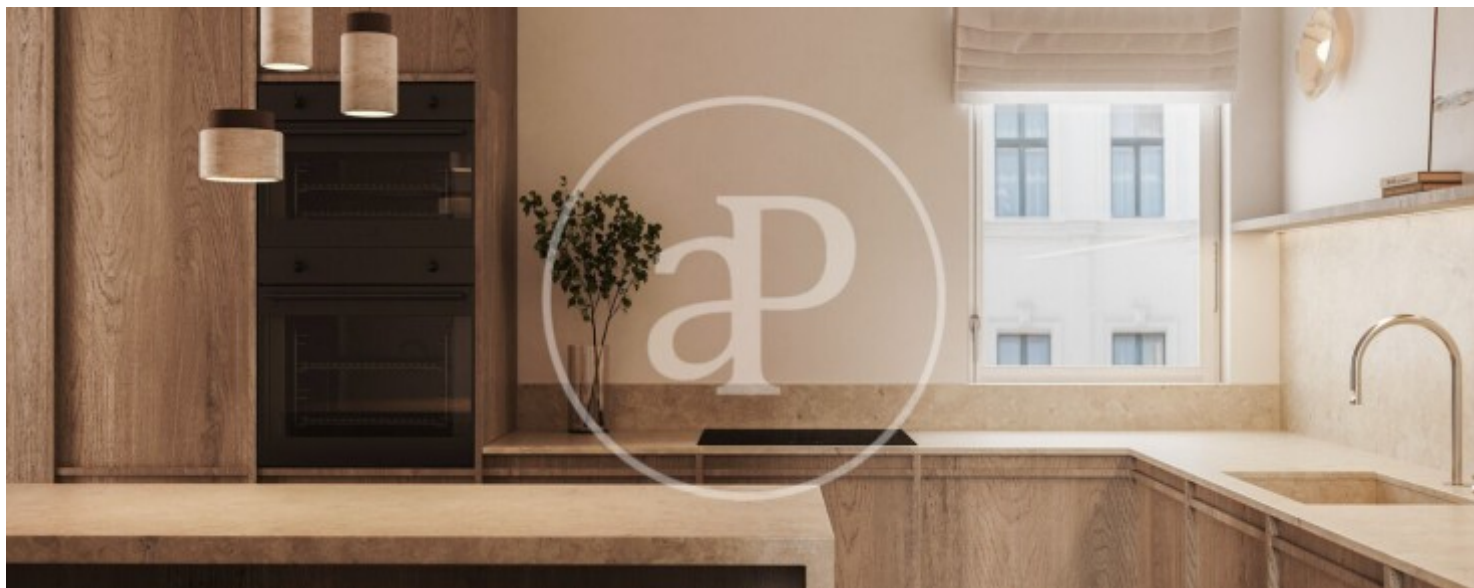
Goya, Madrid

REF. VM2507048



Goya, Madrid

REF. VM2507048



The information about any property is not binding to any offer or contract. Any verbal or written declaration made by aProperties with regards to the value or condition of the property should not be considered accurate or factual. The pictures make reference to some parts of the property at the times that they were taken. The areas, dimensions and distances that are given are approximate and should be checked by the client. The images are computer generated and are just an approximate indication of the real appearance of the property; these may change at any time. The information with regards to the property may also change at any time.

For **more information** or
to make an appointment

apropertiesmadrid@aproperties.es
Tel: 91 800 54 65
www.aproperties.es