



Gaztambide, Madrid

REF. VM1708005

Excellent housing with an ideal location in the area of Gaztambide

Features

- ✓ Heating
- ✓ AACC
- ✓ Lift

Price
690,000 €

Surface
135 m²

Bedrooms
2

Bathrooms
3



Just a few meters from one of the most emblematic streets of the Chamberí neighborhood, we find this flat located on the first floor of a classic building, built in 1930.

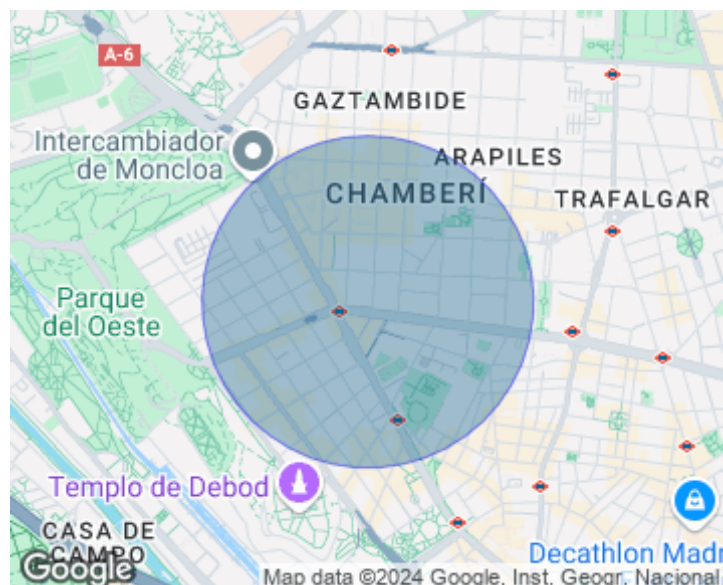
It has very good communications, two meters from the Argüelles metro stop and 500 meters of the Moncloa interchange, this property of 125m² built in a classic statement with four neighbors per floor. The housing was renovated in 2005 and consists of an entrance hall which distributes to the rest area as the most public part of the house. The exterior part of the house has a large living room with two rooms, a sitting area with sofas, very nice to be closer to three large windows, two

of them balconies and another dining area, next to a fully equipped and spacious kitchen With a table for the day to day. In the hand of this space is located a courtesy toilet, thus leaving total independence to the rest area. From the hall there are two spacious bedrooms, both en suite and one with a small and practical dressing room. Both have an independent bathroom of similar dimensions, with quality materials and a window to a community courtyard, which provides luminosity and natural ventilation. The heating installation is central and is complemented by some natural gas radiators. The...

Contact us,
we will be happy to assist you,
to offer you more details and information.

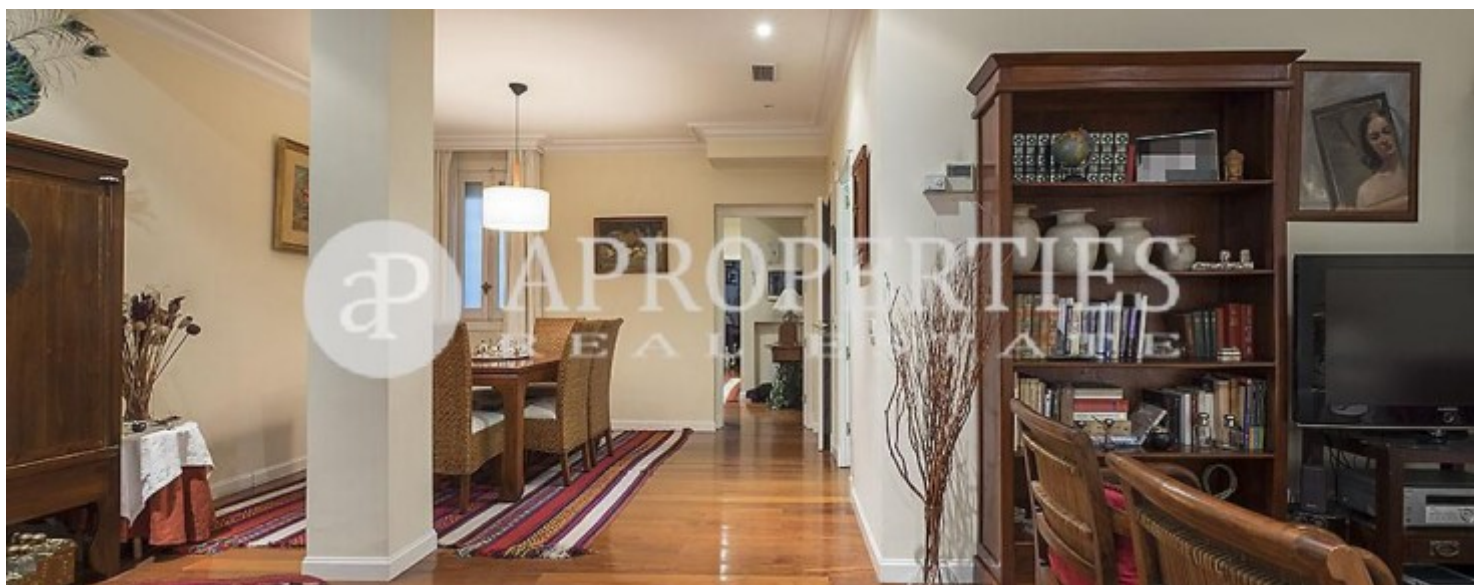
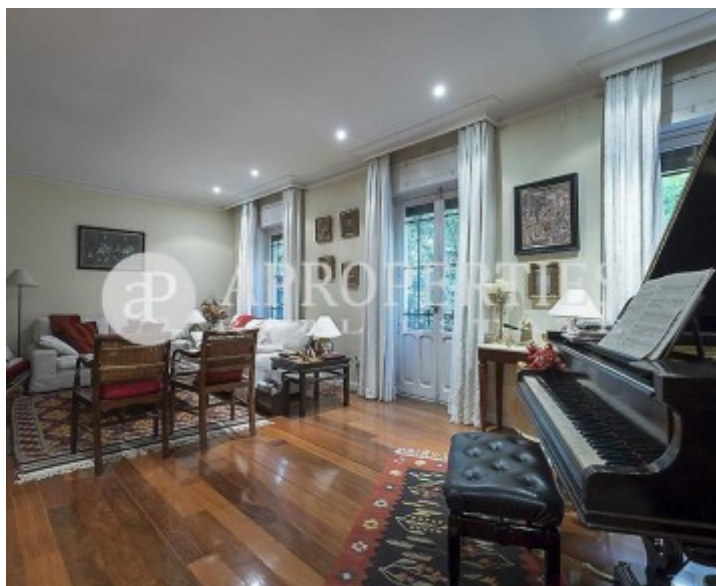
Gaztambide, Madrid

REF. VM1708005



Gaztambide, Madrid

REF. VM1708005



Gaztambide, Madrid

REF. VM1708005



Gaztambide, Madrid

REF. VM1708005



The information about any property is not binding to any offer or contract. Any verbal or written declaration made by aProperties with regards to the value or condition of the property should not be considered accurate or factual. The pictures make reference to some parts of the property at the times that they were taken. The areas, dimensions and distances that are given are approximate and should be checked by the client. The images are computer generated and are just an approximate indication of the real appearance of the property; these may change at any time. The information with regards to the property may also change at any time.

For **more information** or
to make an appointment

apropertiesmadrid@aproperties.es
Tel: 91 800 54 65
www.aproperties.es