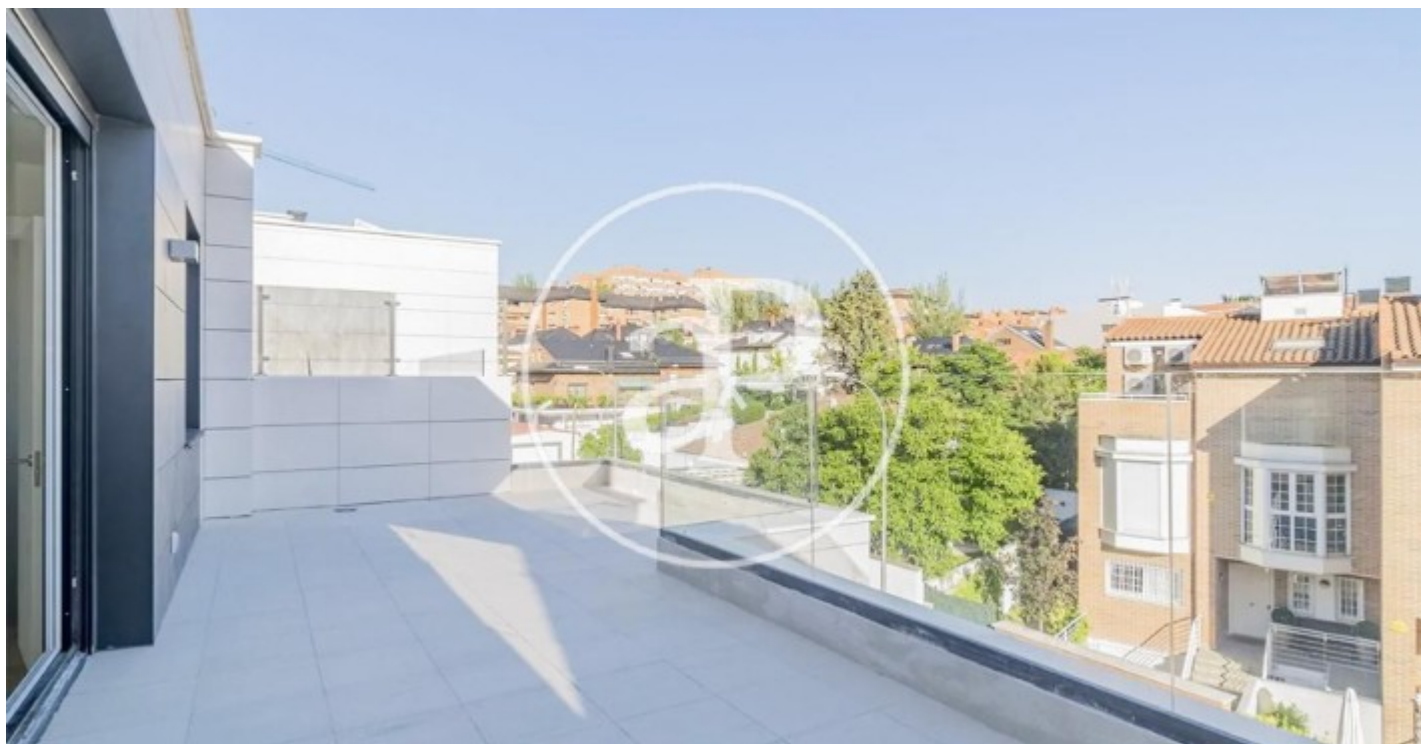


(Fuentelarreina)

Ref: ONM2207001



New building for sale in Peñagrande (Madrid).

Exclusive project of 4 luxury homes with a modern and elegant design, and with a privileged location. Distributed over three floors plus semi-basement, with elevator for 6 people or for a chair for a person with reduced mobility with companion, garden, terraces, private pool and garage, these magnificent villas are located in an exclusive residential area in the northwest of the capital, at the gates of Monte del Pardo. Main Qualities: Private pool and garden / Private elevator / Armored access door / Interior carpentry in white lacquered wood / Wardrobes with interior textile finish / High performance exterior carpentry / Security glass / Motorized blinds / Porcelain stoneware flooring throughout the house / Large format tiling in bathrooms / NEFF appliances / Silestone kitchen countertop / Aerothermal with support of photovoltaic panels on deck / Underfloor heating and cooling, Additional support through ducts in ceiling / Domotics / Recessed lighting in ceiling / Electrical outlets in terrace / Vehicle charging system / Video intercom. Can you imagine living here?

Madrid / Fuentelarreina

Surface
420 m² - 432 m²

Units
1

Completion
Q2 2022

- ✓ Views
- ✓ Heating
- ✓ Boxroom
- ✓ AACC
- ✓ Terrace
- ✓ Backyard
- ✓ Pool
- ✓ Lift
- ✓ Has parking

Price from 1,570,000 €



(Fuentelarreina)

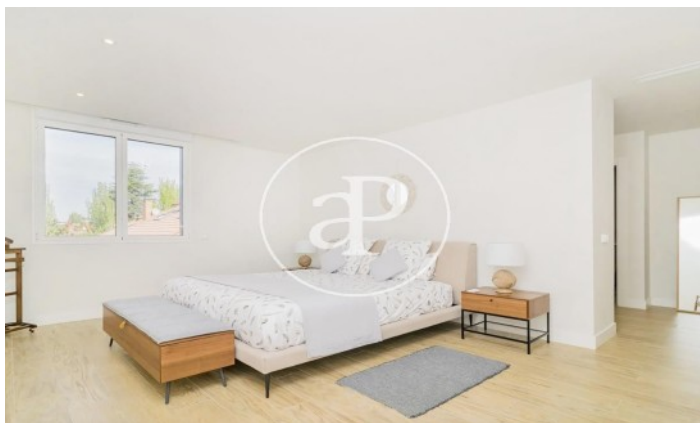
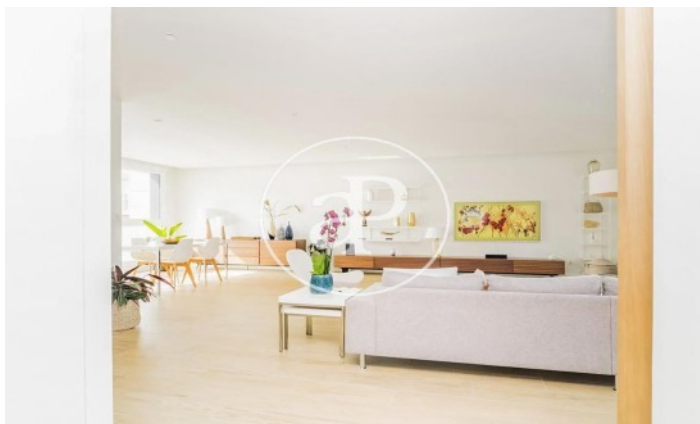
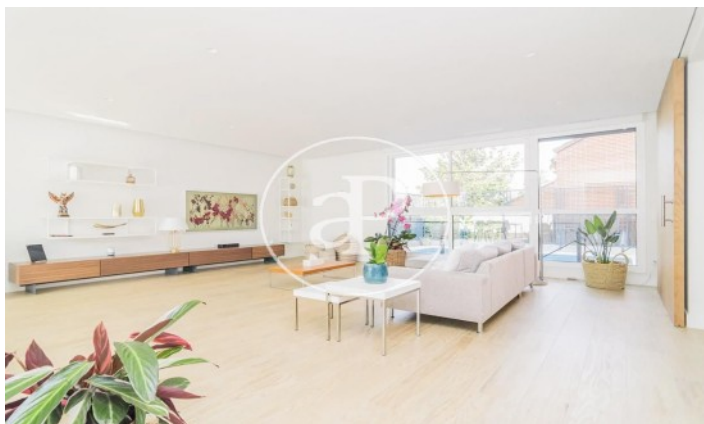
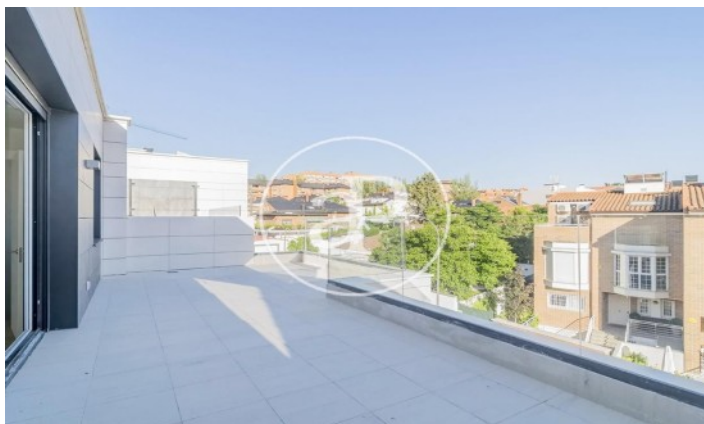
Ref: ONM2207001

Units in this development

Type	Unit	Surface	Terrace	Bedrooms	Bathrooms	Price	State
House	Bajo 25	420 m ²	4 (100 m ²)	5	5	€ 1,570,000	Available
House	Bajo 2C	432 m ²	4 (100 m ²)	5	5	On request	Sold

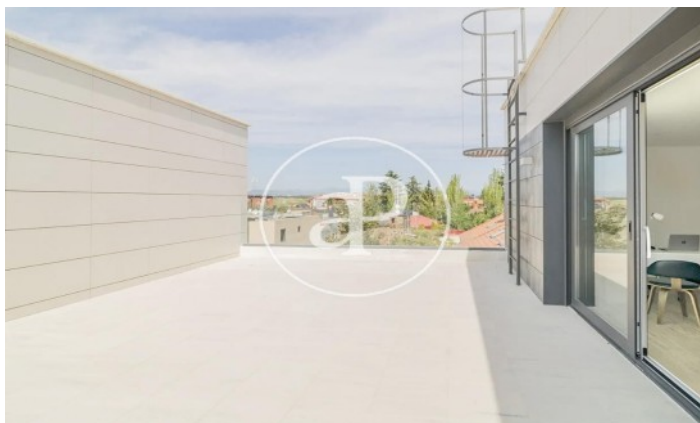
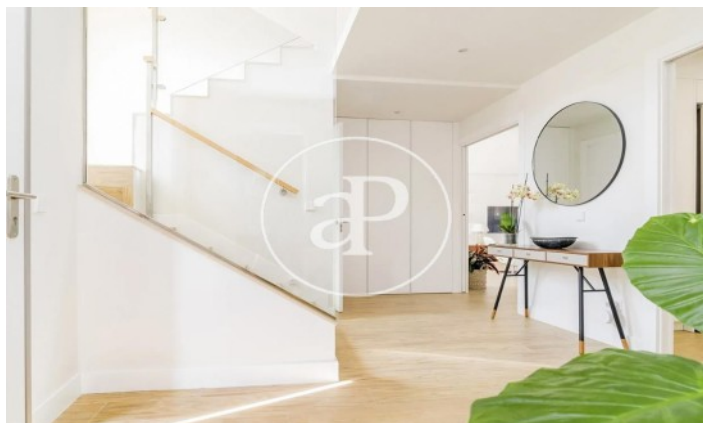
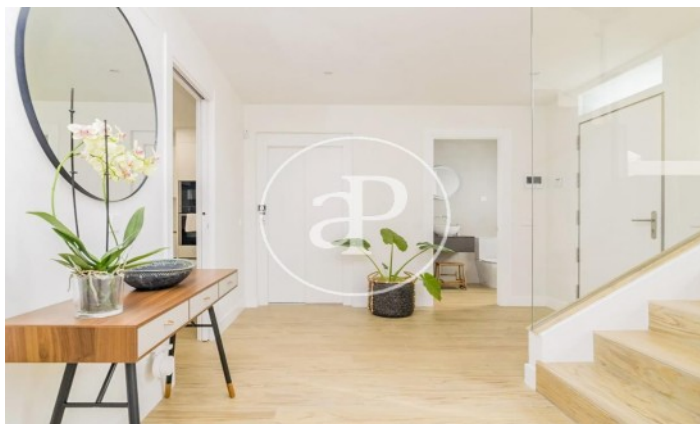
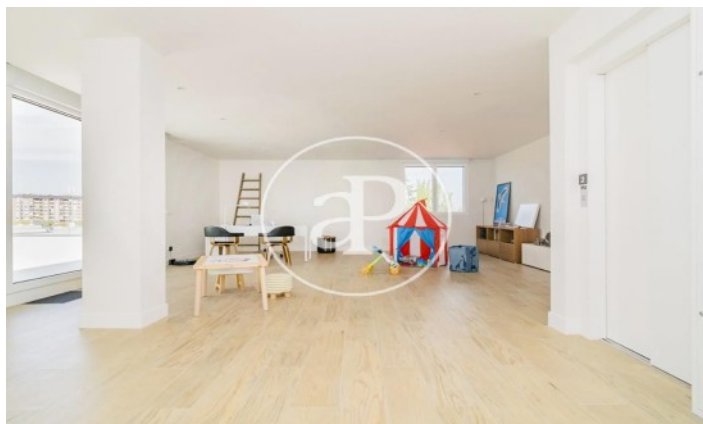
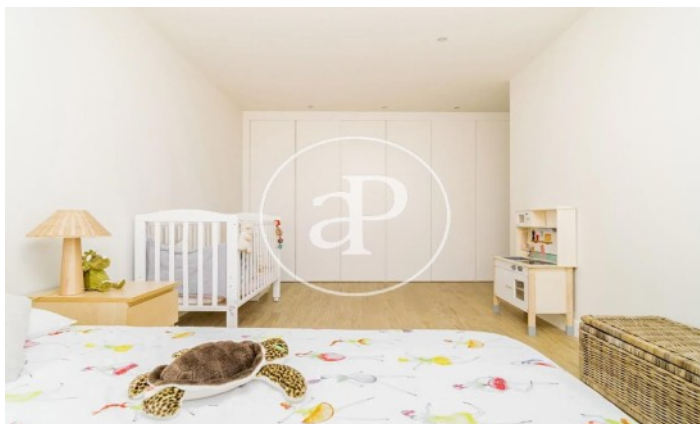
(Fuentelarreina)

Ref: ONM2207001



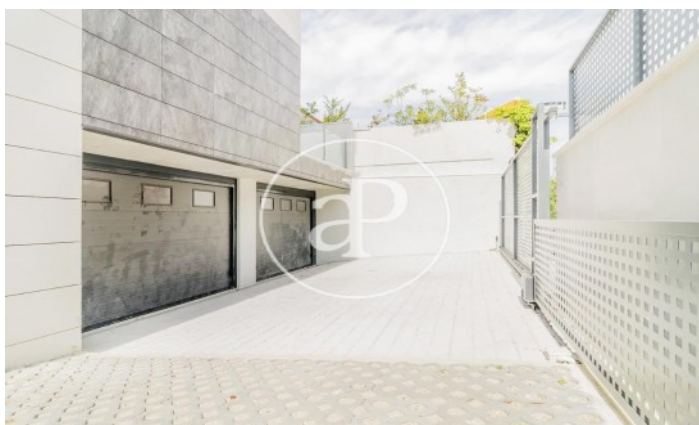
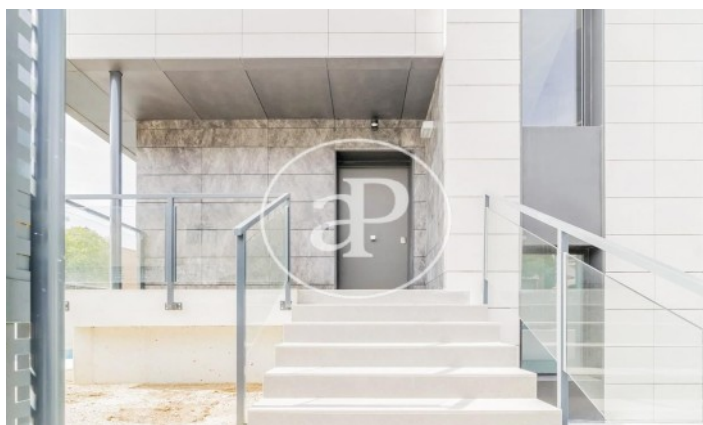
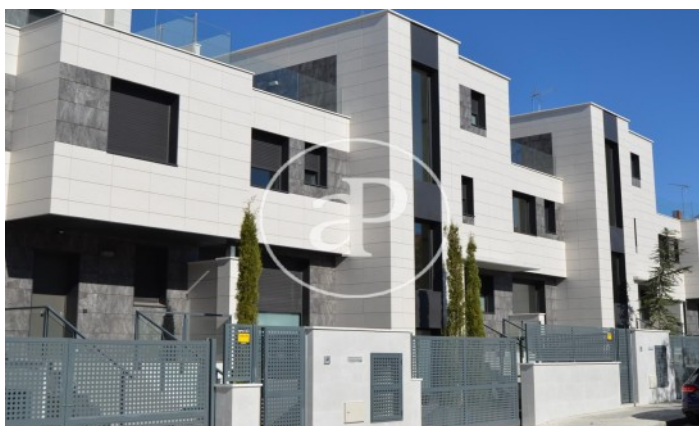
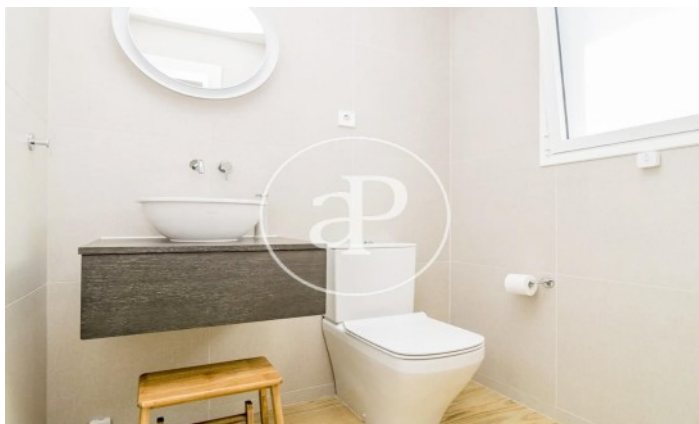
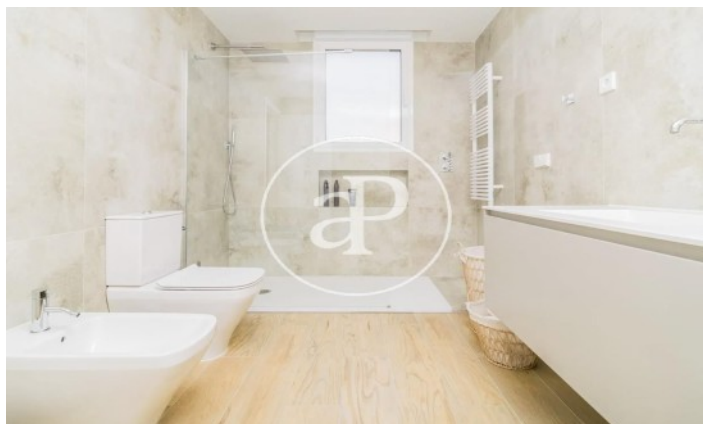
(Fuentelarreina)

Ref: ONM2207001



(Fuentelarreina)

Ref: ONM2207001



The information about any property is not binding to any offer or contract. Any verbal or written declaration made by aProperties with regards to the value or condition of the property should not be considered accurate or factual. The pictures make reference to some parts of the property at the times that they were taken. The areas, dimensions and distances that are given are approximate and should be checked by the client. The images are computer generated and are just an approximate indication of the real appearance of the property; these may change at any time. The information with regards to the property may also change at any time.

Contact us today for more information or to arrange a viewing

Tel: 91 800 54 65

apropertiesmadrid@aproperties.es

<https://www.aproperties.es>