

(Fuentelarreina)

Ref: ONM2304005



New building for sale in Fuentelarreina (Madrid).

NEW DEVELOPMENT FOR SALE WITH SWIMMING POOL, GYM, GARDEN AND GARAGE IN FUENTELARREINA. Units from one, three, four and five bedrooms, duplexes and penthouses with terraces. Community with swimming pool, gym, common gazebo in the garden, two parking spaces per apartment, security and concierge. Fantastic residential area, next to Cardenal Herrera Oria at the height of Puerta de Hierro and Fuentelareina. Finished project, immediately available to move in. Transport services, with buses to Moncloa, Gran Vía, Plaza Castilla, La Vaguada Shopping Center. 5 minutes from the M30. Good qualities, furnished kitchen. The existing varied configuration of housing, allows the adaptation of their family needs. Enjoy the tranquility of a residential neighborhood, within the capital, and perfectly communicated. Can you imagine living here?

Madrid / Fuentelarreina

Surface
139 m² - 272 m²
Units
7
Completion
Q2 2023

- ✓ Views
- ✓ Heating
- ✓ Boxroom
- ✓ AACC
- ✓ Terrace
- ✓ Backyard
- ✓ Pool
- ✓ Gym
- ✓ Lift
- ✓ Security
- ✓ Concierge
- ✓ Has parking

Price from 750,671 €



(Fuentelarreina)

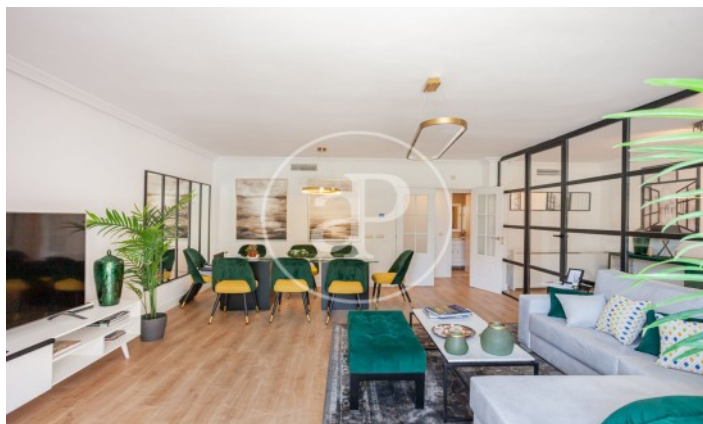
Ref: ONM2304005

Units in this development

Type	Unit	Surface	Terrace	Bedrooms	Bathrooms	Price	State
Flat	3° B (74)	143 m ²	-	4	3	€ 750,671	Available
Attic	4° A (76)	215 m ²	3 (52 m ²)	-	3	€ 1,026,296	Available
Attic	4° A (76)	139 m ²	2 (39 m ²)	3	3	€ 940,984	Available
Attic	4° C (76)	139 m ²	2 (42 m ²)	4	3	€ 975,109	Available
Flat	2° A (78)	182 m ²	-	5	2	€ 954,896	Available
Duplex	3° B (78)	272 m ²	-	5	4	€ 1,183,271	Available
Attic	4° A(74)	166 m ²	3 (38 m ²)	3	3	€ 987,184	Available

(Fuentelarreina)

Ref: ONM2304005



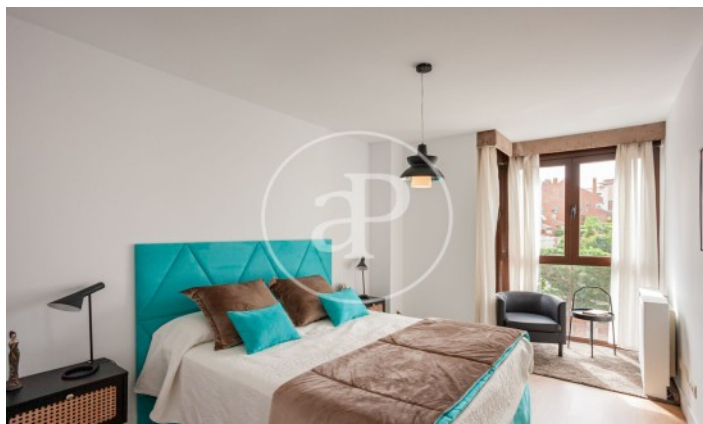
(Fuentelarreina)

Ref: ONM2304005



(Fuentelarreina)

Ref: ONM2304005



The information about any property is not binding to any offer or contract. Any verbal or written declaration made by aProperties with regards to the value or condition of the property should not be considered accurate or factual. The pictures make reference to some parts of the property at the times that they were taken. The areas, dimensions and distances that are given are approximate and should be checked by the client. The images are computer generated and are just an approximate indication of the real appearance of the property; these may change at any time. The information with regards to the property may also change at any time.

Contact us today for more information or to arrange a viewing

Tel: 91 800 54 65

apropertiesmadrid@aproperties.es

<https://www.aproperties.es>