

(Fuentelarreina)

Ref: ONM2305004



New build flat for rent in Fuentelarreina.

NEW BUILD FLAT WITH GARDEN, SWIMMING POOL, PADDLE TENNIS COURT AND GYMNASIUM FOR SALE IN FUENTELARREINA. Exclusive ground floor apartment of 200 m² with private garden of 148 m², in Las Terrazas del Golf. End of construction: November 2023. Community with: 2 swimming pools, paddle tennis, gymnasium, children's area, bicycle parking and a large communal garden. Ground floor with garden facing South-West. Bordering the flat and its private garden with the park that runs through the neighbourhood from east to west, with a width of 60 metres. No traffic noise. The price of the property includes 2 parking spaces, one with electrical pre-installation and storage room. The property has top quality finishes and constructive solutions, highlighting: i) Aluminium exterior carpentry with concealed leaf with thermal bridge break, with double glazing formats, providing maximum thermal and acoustic insulation. Compact module of lacquered aluminium shutters with injected thermal insulation incorporated and motorised operation depending on the room. ii) Centralised energy production system using geothermal and aerothermal energy, with individual thermostats per room, both for coo [...]

Madrid / Fuentelarreina

Surface
200 m² - 200 m²

Units

1

Completion
Q4 2023

- ✓ Heating
- ✓ Boxroom
- ✓ AACC
- ✓ Terrace
- ✓ Backyard
- ✓ Pool
- ✓ Gym
- ✓ Concierge
- ✓ Has parking

Price from 1,285,000 €



(Fuentelarreina)

Ref: ONM2305004

Units in this development

Type	Unit	Surface	Terrace	Bedrooms	Bathrooms	Price	State
Flat	Bajo B	200 m ²	1 (145 m ²)	4	3	€ 1,285,000	Available

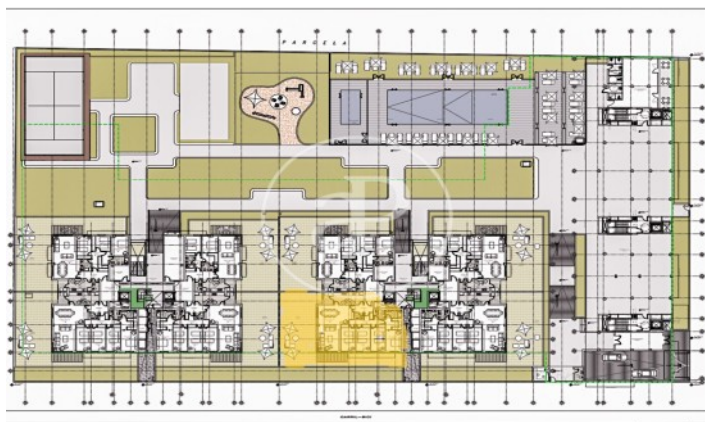
(Fuentelarreina)

Ref: ONM2305004



(Fuentelarreina)

Ref: ONM2305004



The information about any property is not binding to any offer or contract. Any verbal or written declaration made by aProperties with regards to the value or condition of the property should not be considered accurate or factual. The pictures make reference to some parts of the property at the times that they were taken. The areas, dimensions and distances that are given are approximate and should be checked by the client. The images are computer generated and are just an approximate indication of the real appearance of the property; these may change at any time. The information with regards to the property may also change at any time.

Contact us today for more information or to arrange a viewing

Tel: 91 800 54 65

apropertiesmadrid@aproperties.es

<https://www.aproperties.es>