



Fuente del Berro, Madrid

REF. VM2510094

Penthouse for sale in Goya

Features

- ✓ Views
- ✓ Heating
- ✓ Boxroom
- ✓ AACC
- ✓ Terrace
- ✓ Lift

Surface

82 m²

Bedrooms

3

Bathrooms

2

Price

750,000 €



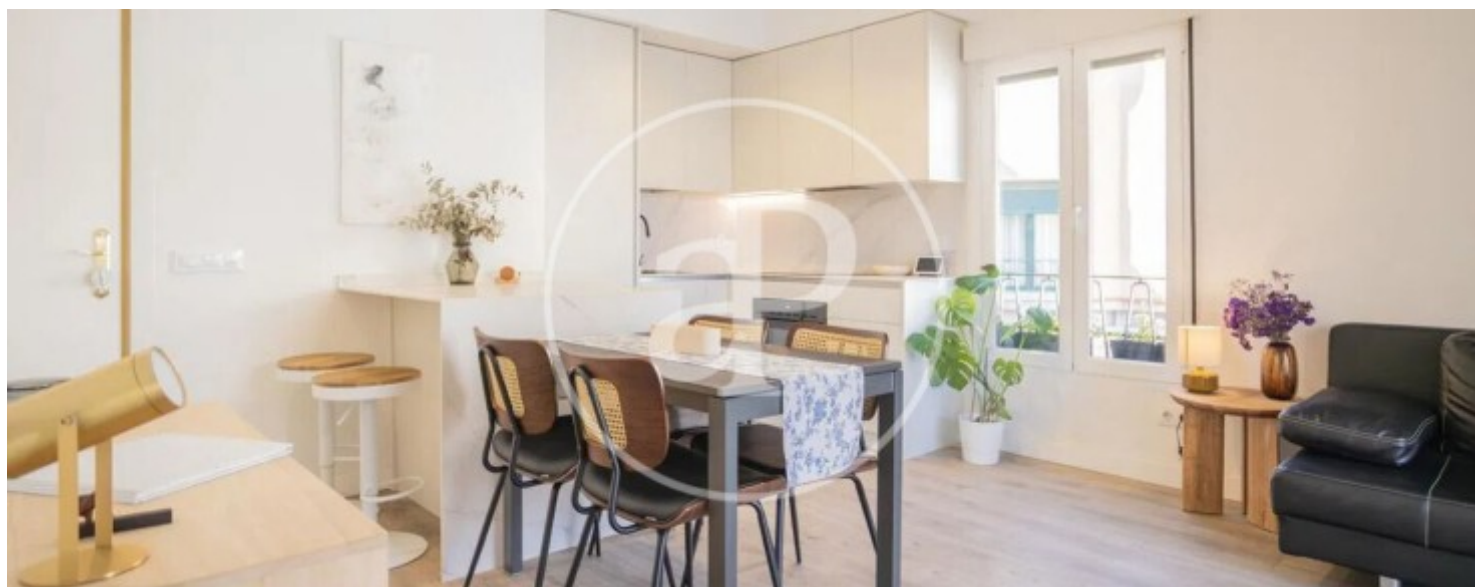
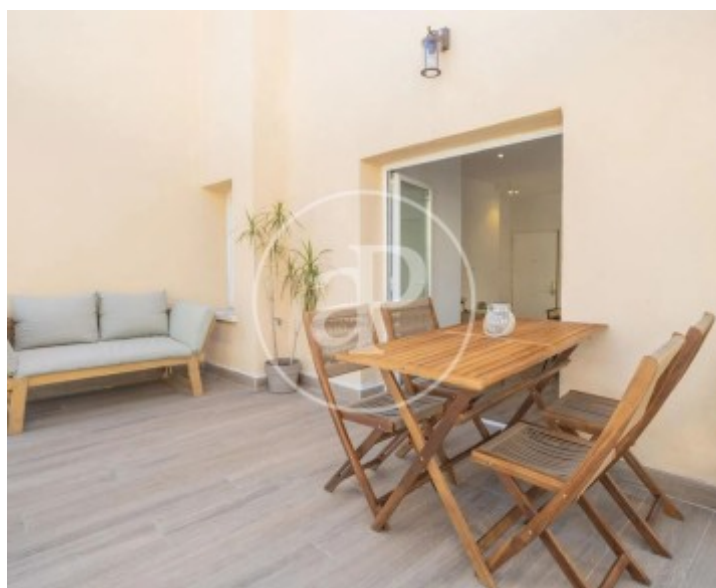
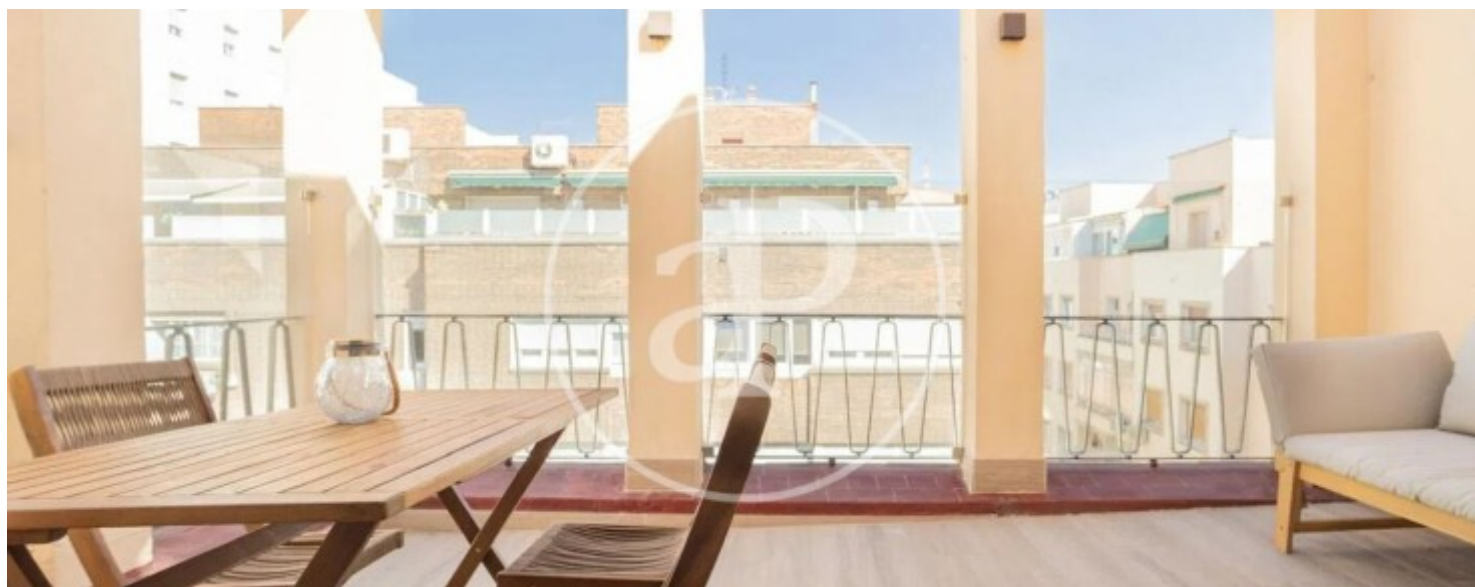
In the Salamanca neighborhood, Fuente del Berro district, a 5-minute walk from Calle Goya, aProperties offers a magnificent exterior penthouse with a very bright terrace, completely renovated with high-quality finishes. It is located on the sixth floor and has 82 square meters of floor space. The night area is distributed into 3 bedrooms and two bathrooms, the master bedroom being exterior and with an en-suite bathroom. The living area consists of a spacious, bright living-dining room with access to a wonderful 12m2 terrace. The open-plan kitchen, integrated into the living room, is fully furnished and has access to a terrace. The apartment has gas central heating and ducted air conditioning in all rooms. All windows are double-glazed tilt-and-turn windows that provide thermal and acoustic

insulation. This is undoubtedly a fantastic opportunity to purchase a home in the quietest and most residential area of the Salamanca district, close to the Retiro Park, five minutes from the Goya shopping area and a few meters from the Fuente del Berro Park, the Movistar Arena and surrounded by all amenities: Schools, health centers, high schools, shops, as well as a nearby connection to the public transport network and direct access to the M-30. Can you imagine living here?

Contact us,
we will be happy to assist you,
to offer you more details and information.

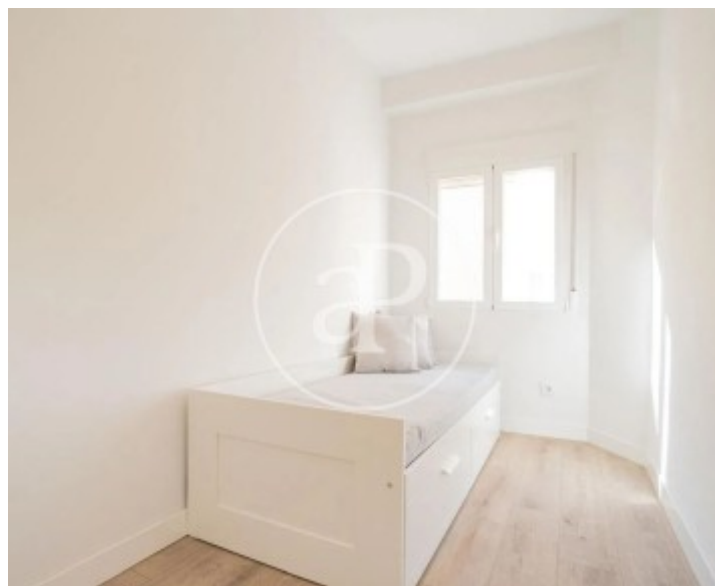
Fuente del Berro, Madrid

REF. VM2510094



Fuente del Berro, Madrid

REF. VM2510094



The information about any property is not binding to any offer or contract. Any verbal or written declaration made by aProperties with regards to the value or condition of the property should not be considered accurate or factual. The pictures make reference to some parts of the property at the times that they were taken. The areas, dimensions and distances that are given are approximate and should be checked by the client. The images are computer generated and are just an approximate indication of the real appearance of the property; these may change at any time. The information with regards to the property may also change at any time.

For **more information** or
to make an appointment

apropertiesmadrid@aproperties.es
Tel: 91 800 54 65
www.aproperties.es