



Fuente del Berro, Madrid

REF. AM2512006

Flat for rent in Fuente del Berro (Madrid)

Features

- ✓ Heating
- ✓ AACC
- ✓ Lift

Price
2,000 €

Surface

59 m²

Bedrooms

2

Bathroom

1



Next to Plaza de Manuel Becerra, you'll find this newly renovated 59m² apartment.

Located just steps from Calle Alcalá, this area offers the perfect combination of convenience, accessibility, and urban living. The surrounding area boasts a wide variety of shops, supermarkets, cafes, and restaurants, and is also very close to Eva Duarte Park. The fully renovated apartment features two double bedrooms, one interior with large built-in wardrobes, and the other exterior with street views. The bathroom has been renovated with a large walk-in shower, and the fully equipped kitchen includes new appliances and ample storage space. The living room is connected to

the kitchen and features air conditioning and a balcony that floods the space with natural light throughout the day. Located in a small, residential building with an elevator, this brand-new apartment is equipped with heating and air conditioning, porcelain tile flooring, and carefully selected lighting fixtures. Currently unfurnished, furniture is available upon request. Fuente del Berro is a quiet, elegant, and highly sought-after neighborhood. Its atmosphere is safe, vibrant, and very practical for everyday life, making it a strategic location for those seeking a high quality of life as...

Contact us,
we will be happy to assist you,
to offer you more details and information.

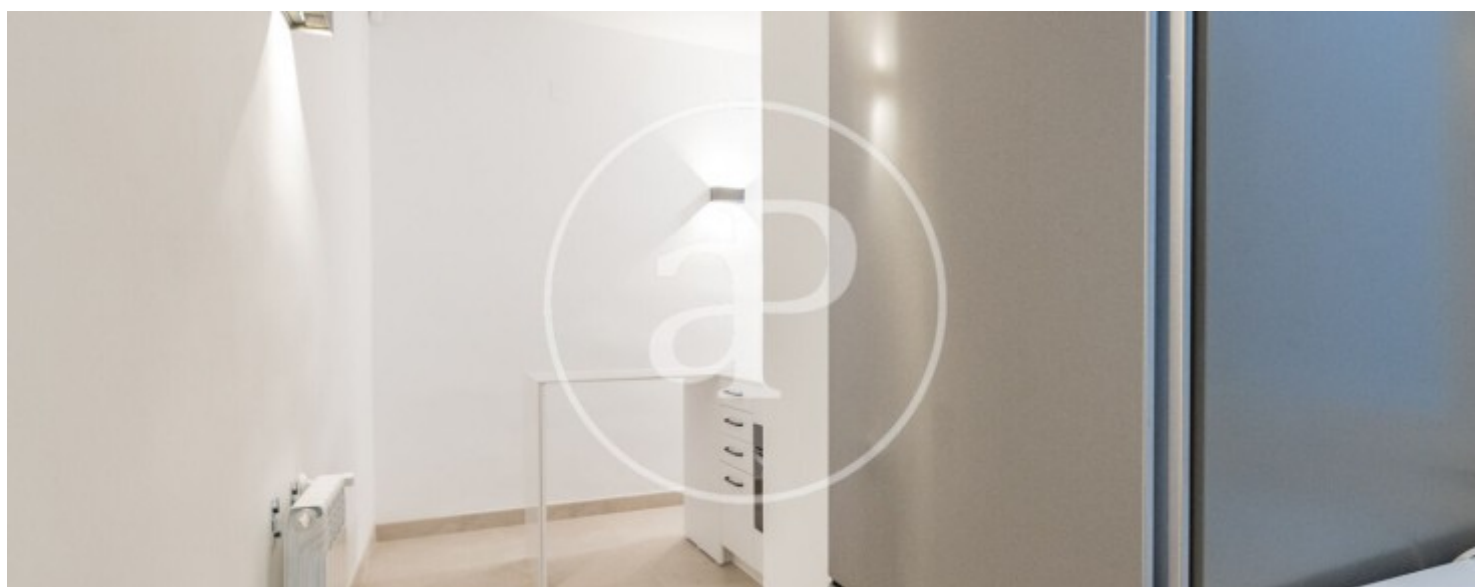
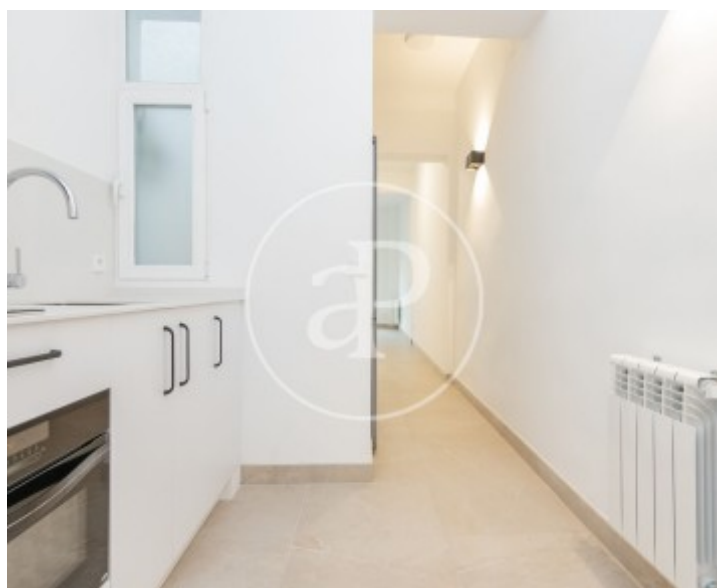
Fuente del Berro, Madrid

REF. AM2512006



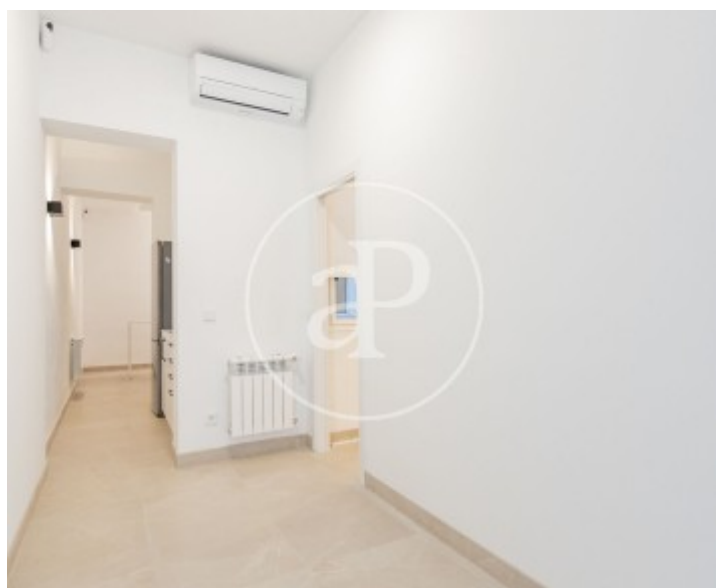
Fuente del Berro, Madrid

REF. AM2512006



Fuente del Berro, Madrid

REF. AM2512006



Fuente del Berro, Madrid

REF. AM2512006



The information about any property is not binding to any offer or contract. Any verbal or written declaration made by aProperties with regards to the value or condition of the property should not be considered accurate or factual. The pictures make reference to some parts of the property at the times that they were taken. The areas, dimensions and distances that are given are approximate and should be checked by the client. The images are computer generated and are just an approximate indication of the real appearance of the property; these may change at any time. The information with regards to the property may also change at any time.

For **more information** or
to make an appointment

apropertiesmadrid@aproperties.es
Tel: 91 800 54 65
www.aproperties.es