

Fuente del Berro, Madrid

REF. VM2603020

# Flat for sale in Hermosilla street

## Features

Surface

**57 m<sup>2</sup>**

Bedrooms

**2**

Bathroom

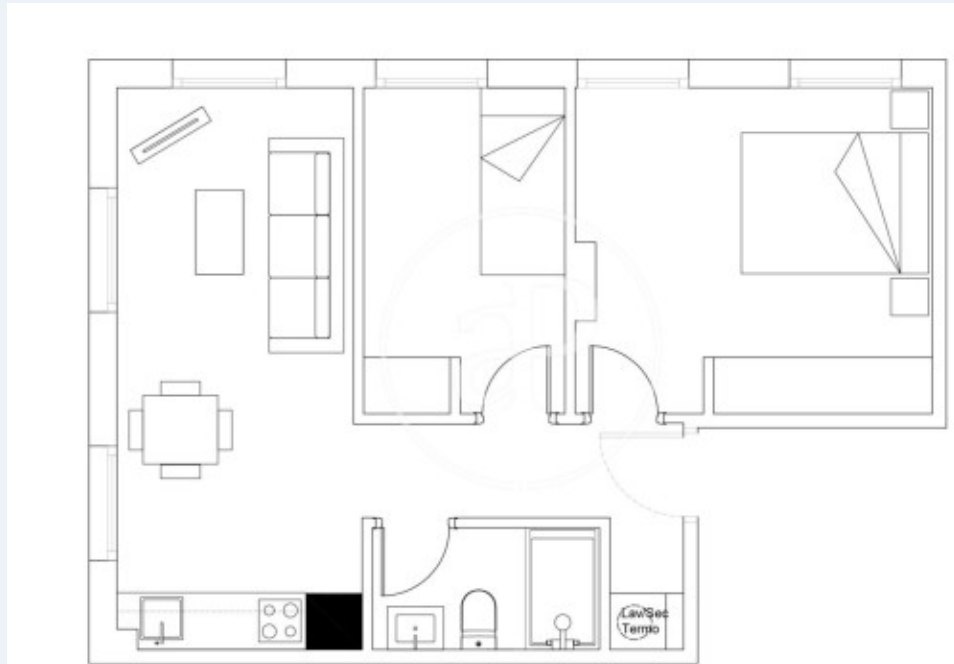
**1**

✓ Heating

✓ Lift

Price

**575,000 €**



**Discover this fantastic house located in the sought-after neighborhood of Fuente del Berro, in the district of Salamanca.**

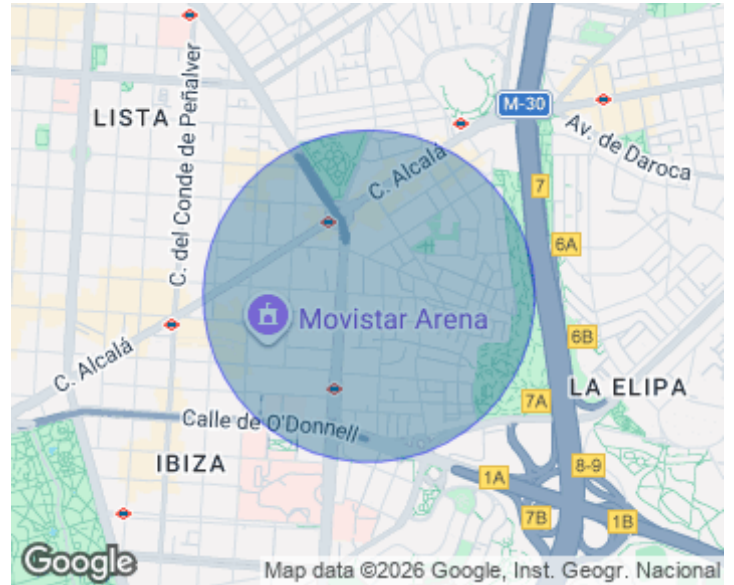
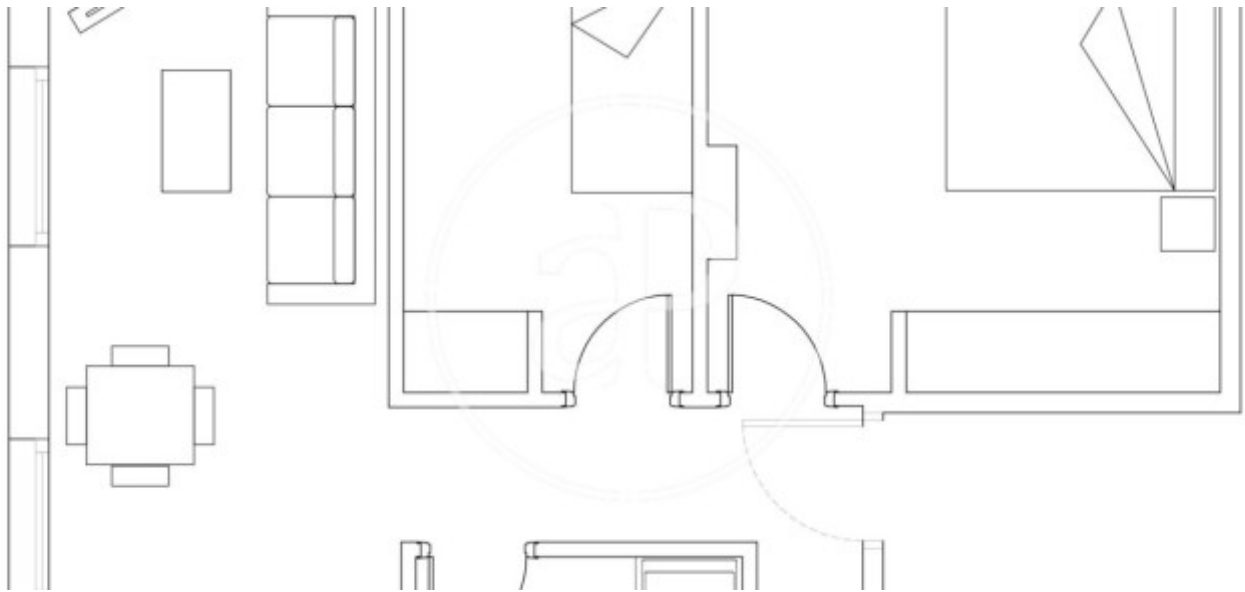
A privileged location that combines residential tranquility with proximity to all services, shops and excellent transport connections. The property stands out for its luminosity, its careful distribution and the characteristic charm of the estates in this area of Madrid. It is a high floor, exterior of 54m<sup>2</sup> of cadastre. Its spacious and well-used spaces offer a comfortable and welcoming environment, ideal for both habitual residence and investment. The layout consists of two large bedrooms with fitted wardrobes and a bathroom. Custom-made

open kitchen with paneled appliances that faces the living area. We highlighted the reform of the house taking care of the utmost detail, creating a cozy and very functional atmosphere. Thanks to its fairly square floor plan, it has been possible to make the most of the square meters, creating spacious environments. The materials used are of first quality, fitted wardrobes of large size and all dresses, partition and bathroom furniture made to measure. The house has heating and air conditioning. Located a few steps from the emblematic Park of the Quinta de la Fuente del Berro, the house...

**Contact us,**  
we will be happy to assist you,  
to offer you more details and information.

Fuente del Berro, Madrid

REF. VM2603020



Fuente del Berro, Madrid

REF. VM2603020



Fuente del Berro, Madrid

REF. VM2603020



The information about any property is not binding to any offer or contract. Any verbal or written declaration made by aProperties with regards to the value or condition of the property should not be considered accurate or factual. The pictures make reference to some parts of the property at the times that they were taken. The areas, dimensions and distances that are given are approximate and should be checked by the client. The images are computer generated and are just an approximate indication of the real appearance of the property; these may change at any time. The information with regards to the property may also change at any time.

For **more information** or  
to make an appointment

[apropertiesmadrid@aproperties.es](mailto:apropertiesmadrid@aproperties.es)  
Tel: 91 800 54 65  
[www.aproperties.es](http://www.aproperties.es)