

Fuente del Berro, Madrid

REF. VM2502028

Semi-detached house for sale in Fuente del Berro

Features

- ✓ Views
- ✓ Heating
- ✓ Boxroom
- ✓ AACC
- ✓ Terrace
- ✓ Backyard
- ✓ Security
- ✓ Has parking

Surface

233 m²

Plot surface

135 m²

Bedrooms

4

Bathrooms

2

Price

2,600,000 €



Aproperties presents fantastic housing located in one of the "Historical Colonies of Madrid" more demands and fashion of the moment.

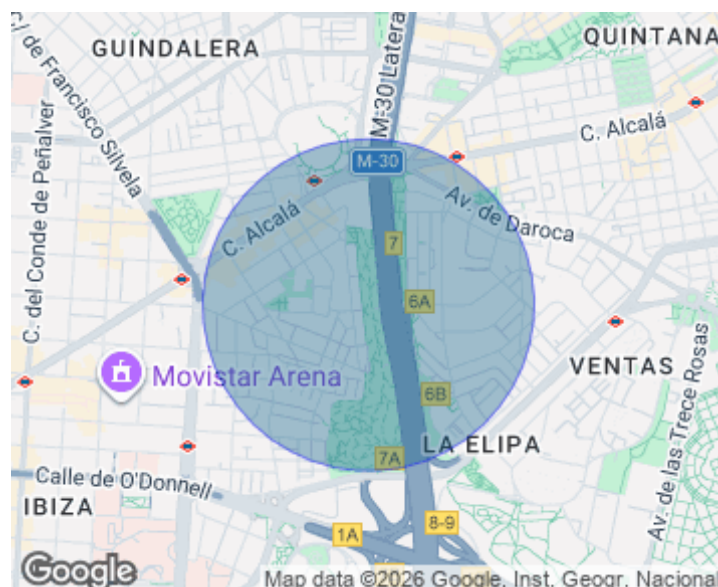
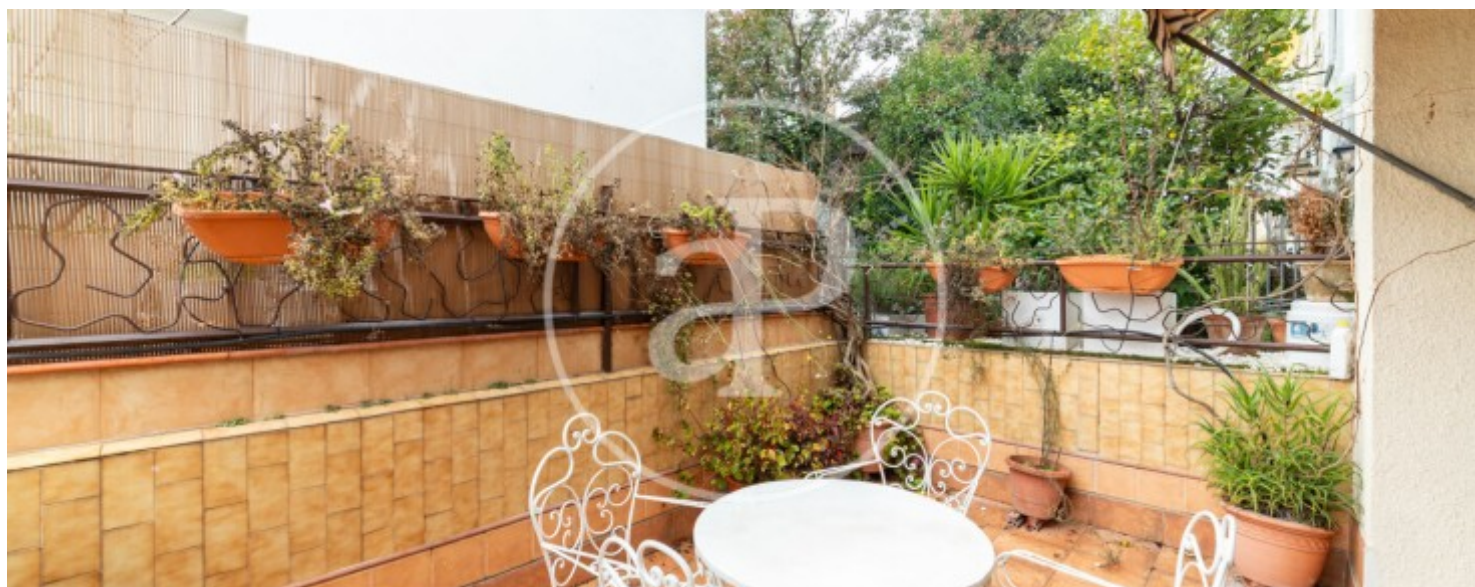
The Colonia Iturbe is an oasis in the heart of the capital, in the neighborhood of Fuente del Berro - Salamanca, next to one of the most beautiful and unknown parks of all Madrid, the park of "La quinta de Fuente del Berro". The house has 233 m2 built according to cadastre and consists of three floors distributed as follows; Ground floor: very spacious and bright living room with access to a pleasant terrace. Independent kitchen and a courtesy toilet. First floor: four bedrooms and a bathroom. Basement: a room, a

small storage room and a large living room with fireplace. All rooms have windows. The house has a garage for own use within it, as well as the possibility of parking two other cars more inside the closed area of the colony. The house has a lot of charm, with great possibilities for reform, without internal load-bearing walls; it is a true blank canvas. The Colony has 24-hour security. It is a great opportunity to live in a unique and privileged environment Can you imagine living here?

Contact us,
we will be happy to assist you,
to offer you more details and information.

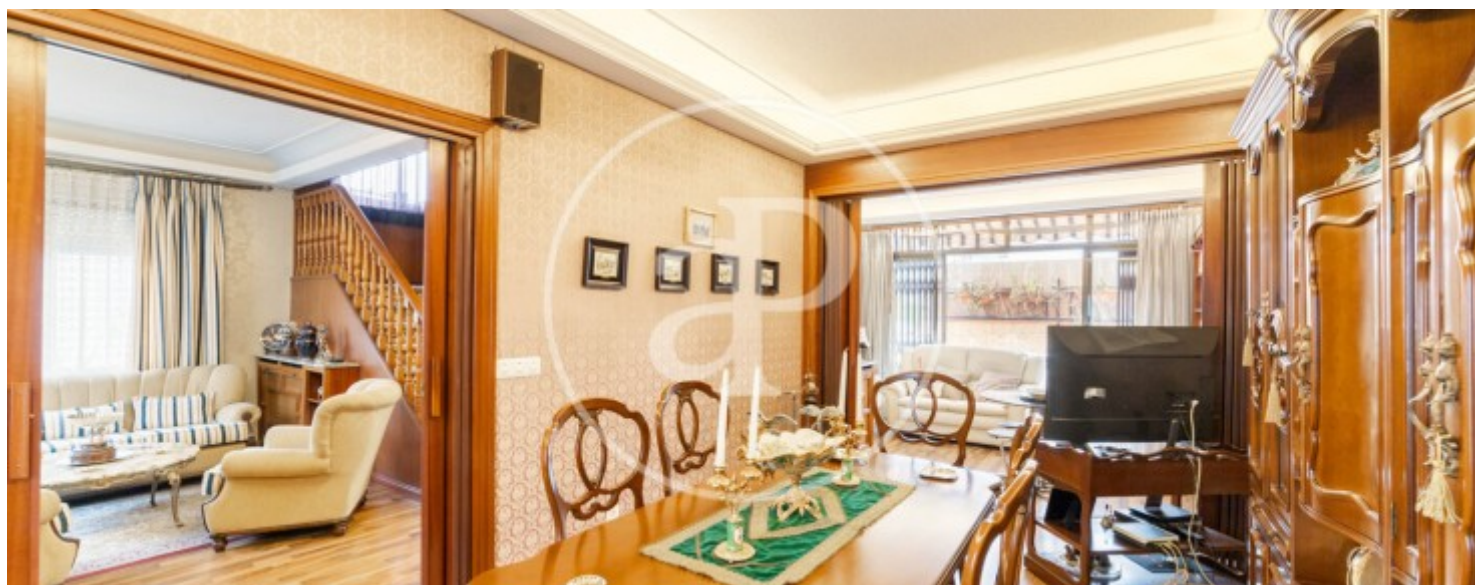
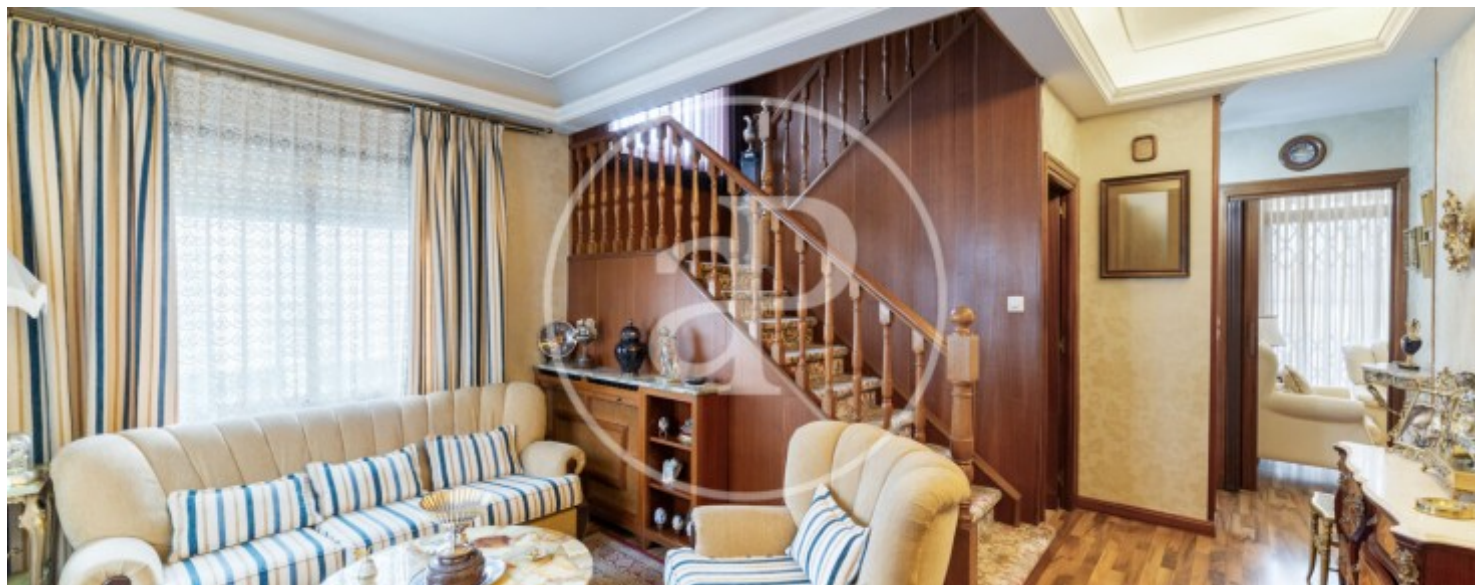
Fuente del Berro, Madrid

REF. VM2502028



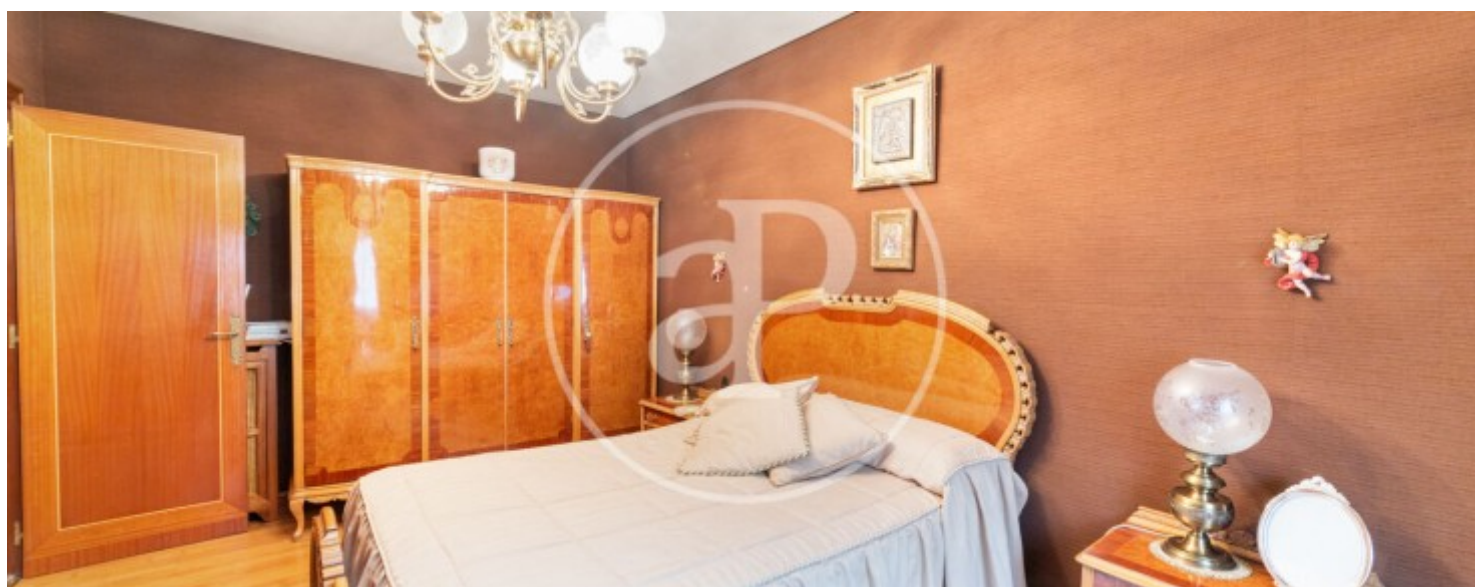
Fuente del Berro, Madrid

REF. VM2502028



Fuente del Berro, Madrid

REF. VM2502028



Fuente del Berro, Madrid

REF. VM2502028



The information about any property is not binding to any offer or contract. Any verbal or written declaration made by aProperties with regards to the value or condition of the property should not be considered accurate or factual. The pictures make reference to some parts of the property at the times that they were taken. The areas, dimensions and distances that are given are approximate and should be checked by the client. The images are computer generated and are just an approximate indication of the real appearance of the property; these may change at any time. The information with regards to the property may also change at any time.

For **more information** or
to make an appointment

apropertiesmadrid@aproperties.es
Tel: 91 800 54 65
www.aproperties.es