

(El Viso)

Ref: ONM2311004



New development in El Viso.

Discover this green oasis in the heart of Madrid. An exclusive community of only 8 neighbours with maximum privacy. Architecture and Interior Design come together in this project with the aim of achieving total harmony between the interior and exterior spaces of each home. Its avant-garde design together with the meticulous selection of materials and finishes make this a unique project, where natural light is one of the main protagonists thanks to its large terraces, large windows and double heights. The project has 3 and 4 bedroom homes, all en suite and spacious dressing rooms in the master bedroom. All homes have 1 or 2 terraces and include 4 parking spaces and storage room. As for the communal areas, there will be a large entrance hall and an exclusive outdoor garden with a saline chlorination swimming pool. Can you imagine living here?

Madrid / El Viso

Surface
300 m² - 364 m²

Units

8

Completion
Q2 2025

- ✓ Views
- ✓ Heating
- ✓ Boxroom
- ✓ AACC
- ✓ Terrace
- ✓ Backyard
- ✓ Pool
- ✓ Gym
- ✓ Lift
- ✓ Security
- ✓ Concierge
- ✓ Has parking

Price from 5,250,000 €



(El Viso)

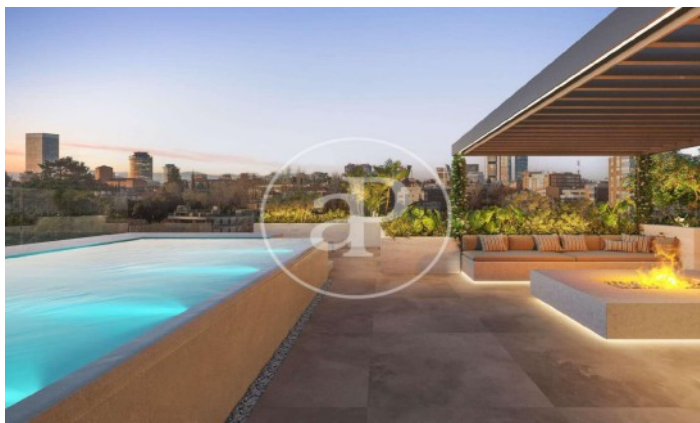
Ref: ONM2311004

Units in this development

| Type | Unit | Surface | Terrace | Bedrooms | Bathrooms | Price | State |
|------|------|-----------------------|----------------------------|----------|-----------|-------------|-----------|
| Flat | 1° B | 300.40 m ² | 1 (9.50 m ²) | 3 | 4 | € 5,250,000 | Available |
| Flat | 2° A | 364.40 m ² | 2 (31.90 m ²) | 4 | 5 | € 5,975,000 | Available |

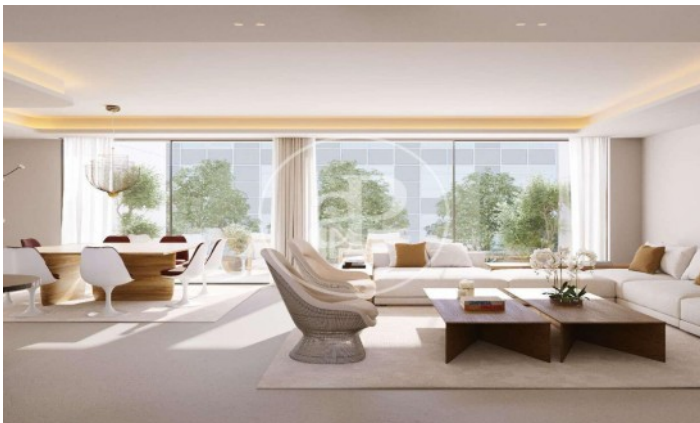
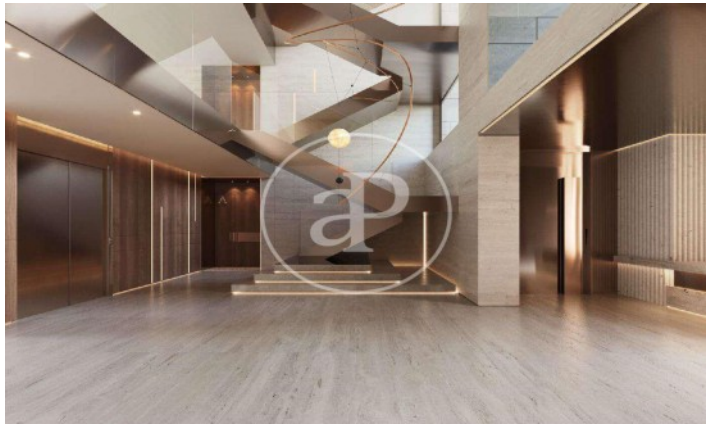
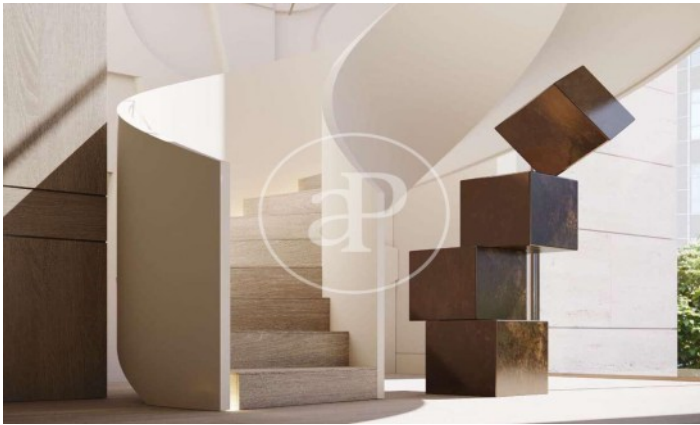
(El Viso)

Ref: ONM2311004



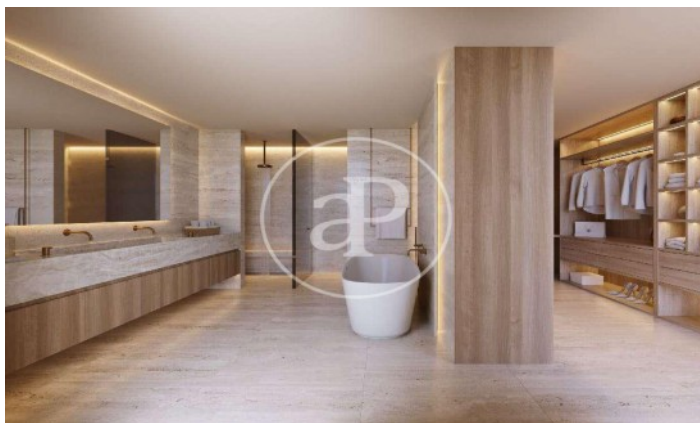
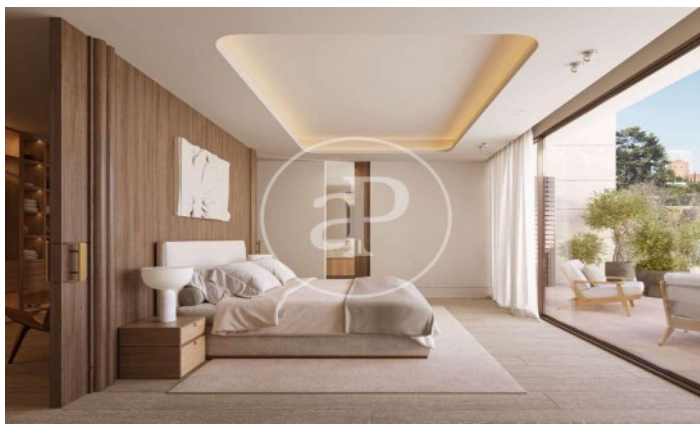
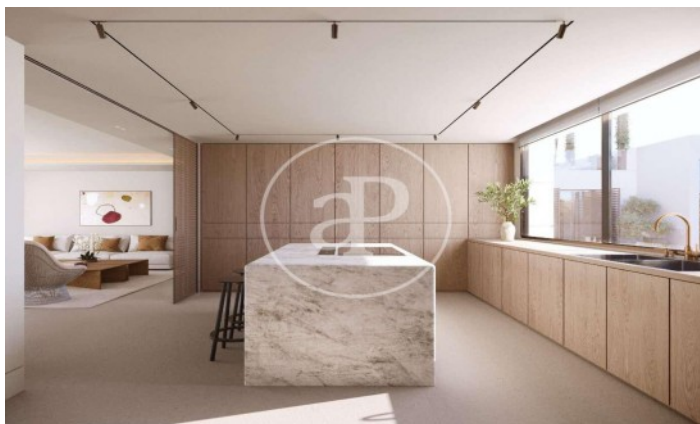
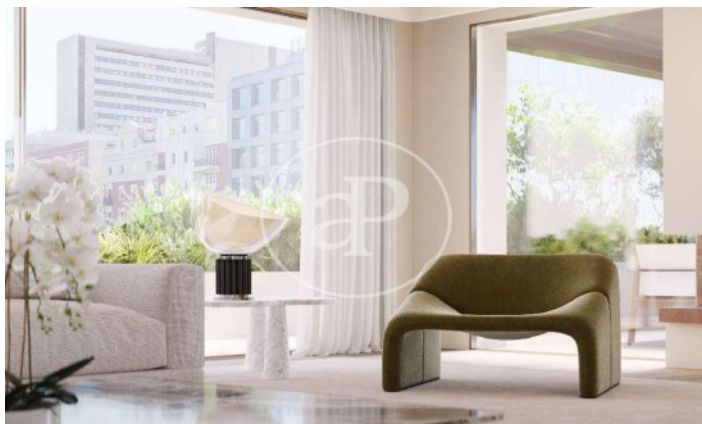
(El Viso)

Ref: ONM2311004



(El Viso)

Ref: ONM2311004



The information about any property is not binding to any offer or contract. Any verbal or written declaration made by aProperties with regards to the value or condition of the property should not be considered accurate or factual. The pictures make reference to some parts of the property at the times that they were taken. The areas, dimensions and distances that are given are approximate and should be checked by the client. The images are computer generated and are just an approximate indication of the real appearance of the property; these may change at any time. The information with regards to the property may also change at any time.

Contact us today for more information or to arrange a viewing

Tel: 91 800 54 65

apropertiesmadrid@aproperties.es

<https://www.aproperties.es>