



(El Viso)

Ref: ONM2409002



## *Exclusive new building (work) for sale in El Viso (Madrid)*

Residences with 1 to 4 bedroom options, all with luxurious and meticulous attention to detail and private outdoor space. Every aspect of the homes, from the warm, natural materials to the careful lighting and the finest finishes, combine to create a sophisticated home with every comfort. The design of the homes is conceived to maximise space and light with high quality, efficient materials selected for their functional and sensory benefits. The building structure, from soundproofing to insulation, excellent glazing and state-of-the-art building management systems, has been designed with every detail carefully considered, as have the high-end kitchens and luxury bathrooms. The finishes are first class and offer timeless design to ensure performance, longevity and premium quality. The project has been designed to BREEAM EXCELLENT HOUSING 2020 standards, raising the city's standards of luxury and sustainability. The communal areas comprise a fully equipped gymnasium and an outdoor heated swimming pool. Two floors of underground parking with electric vehicle charging for each parking space and a stunning central garden. Can you imagine living here?

Madrid / El Viso

Surface  
68 m<sup>2</sup> - 275 m<sup>2</sup>  
Units  
17  
Completion  
Q4 2026

- ✓ Views
- ✓ Heating
- ✓ Boxroom
- ✓ AACC
- ✓ Terrace
- ✓ Backyard
- ✓ Pool
- ✓ Gym
- ✓ Security
- ✓ Concierge
- ✓ Has parking

Price from 925,000 €

(El Viso)

Ref: ONM2409002

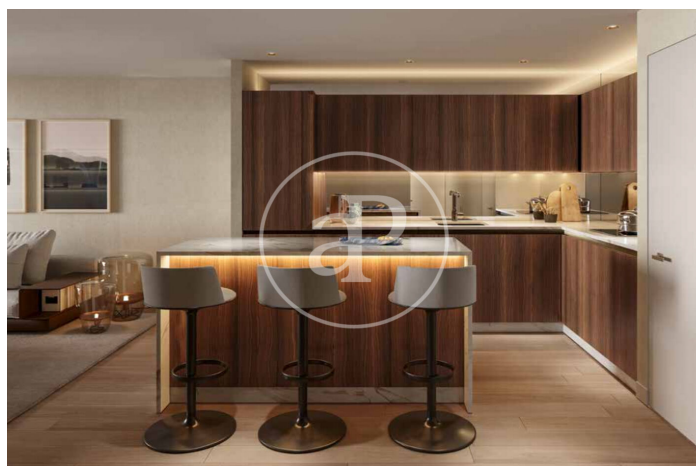
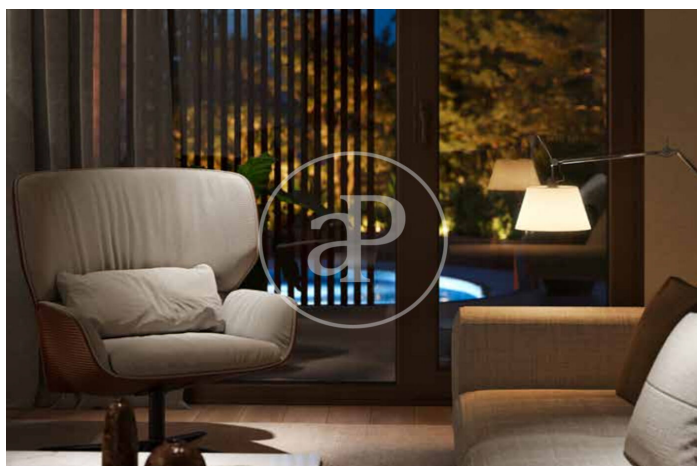
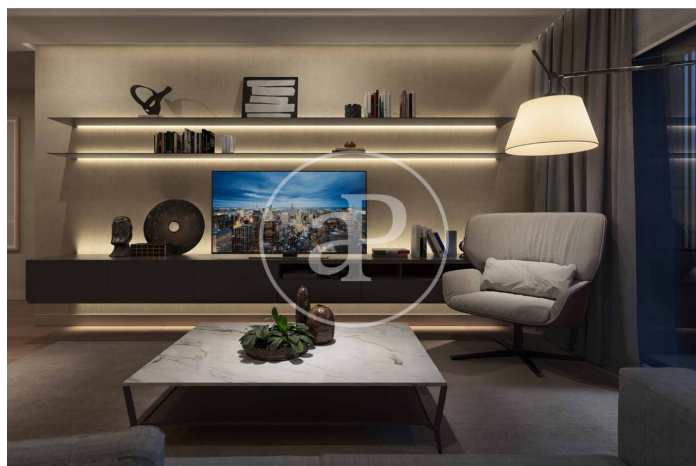
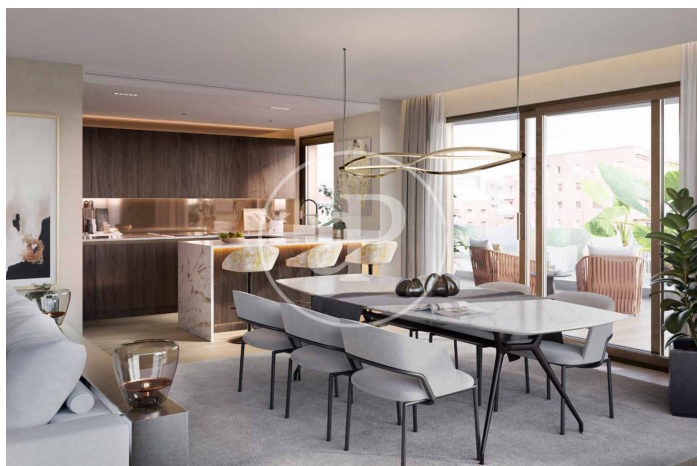
## Units in this development

Type	Unit	Surface	Terrace	Bedrooms	Bathrooms	Price	State
Flat	2° 2	68 m <sup>2</sup>	1 ( 3 m <sup>2</sup> )	1	1	€ 925,000	Available
Flat	3° 2	68 m <sup>2</sup>	1 ( 3 m <sup>2</sup> )	1	1	€ 975,000	Available
Attic	5° 18	275 m <sup>2</sup>	1 ( 62 m <sup>2</sup> )	3	3	€ 4,350,000	Available
Attic	4° 14	160 m <sup>2</sup>	1 ( 23 m <sup>2</sup> )	2	3	€ 2,350,000	Available
Attic	4° 12	174 m <sup>2</sup>	1 ( 40 m <sup>2</sup> )	2	3	€ 2,500,000	Available
Attic	5° 16	266 m <sup>2</sup>	2 ( 94 m <sup>2</sup> )	2	3	€ 3,950,000	Available
Duplex	2° 8	144 m <sup>2</sup>	2 ( 9.20 m <sup>2</sup> )	2	3	€ 1,990,000	Available
Duplex	2° 1	194 m <sup>2</sup>	2 ( 15 m <sup>2</sup> )	3	3	€ 2,400,000	Available



(El Viso)

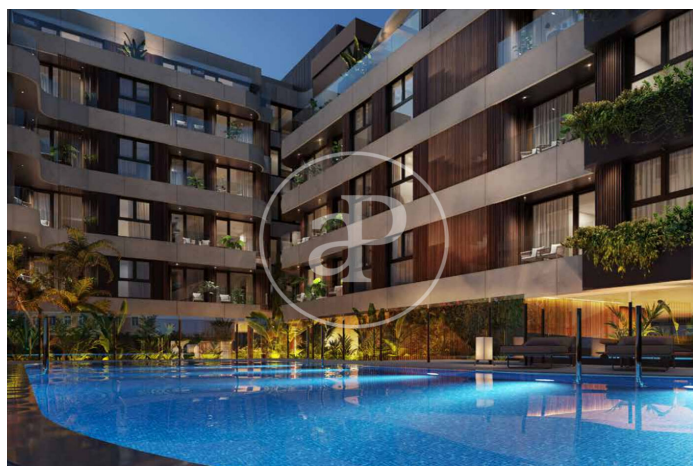
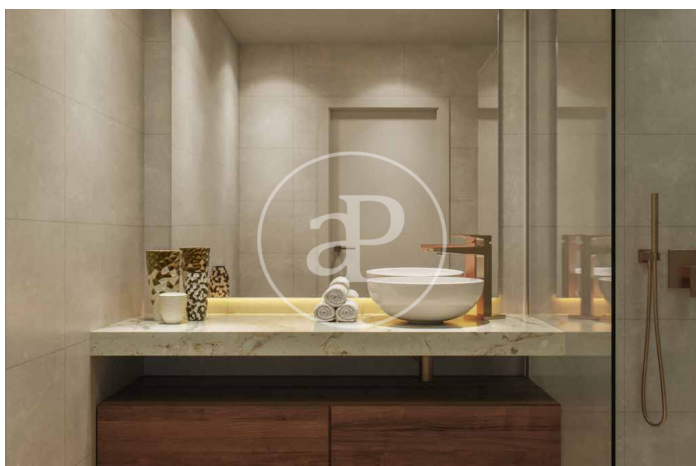
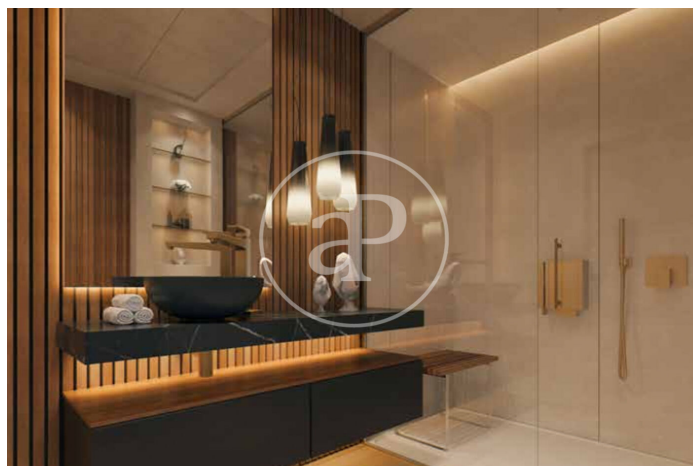
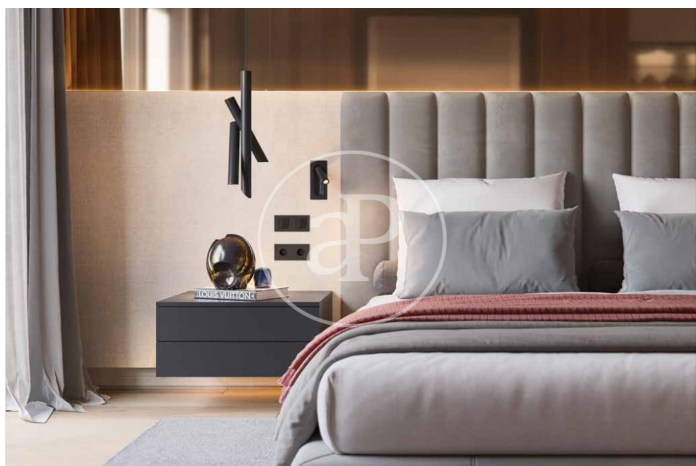
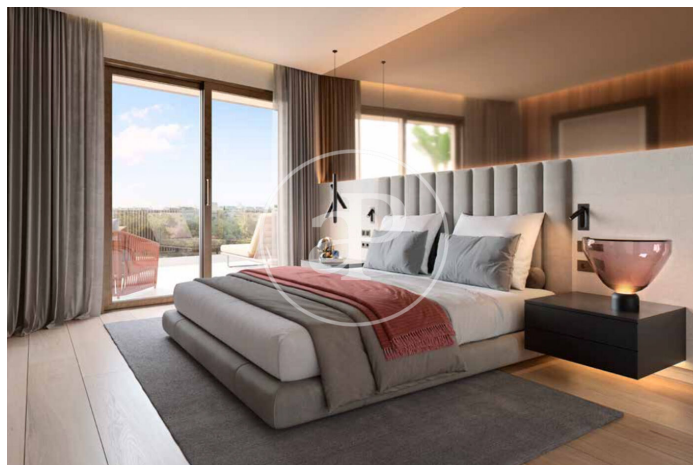
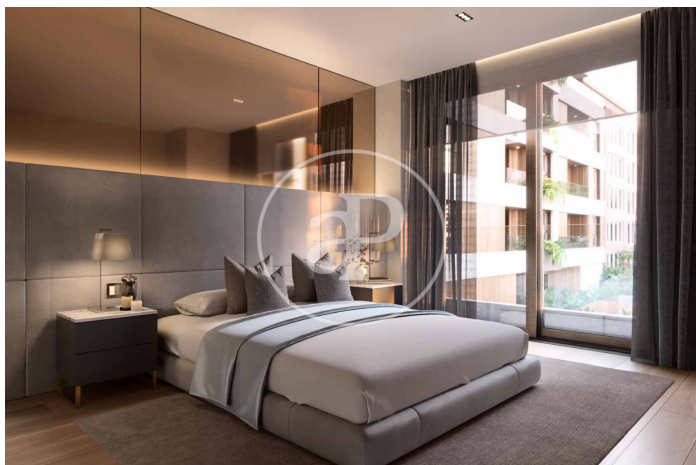
Ref: ONM2409002





(El Viso)

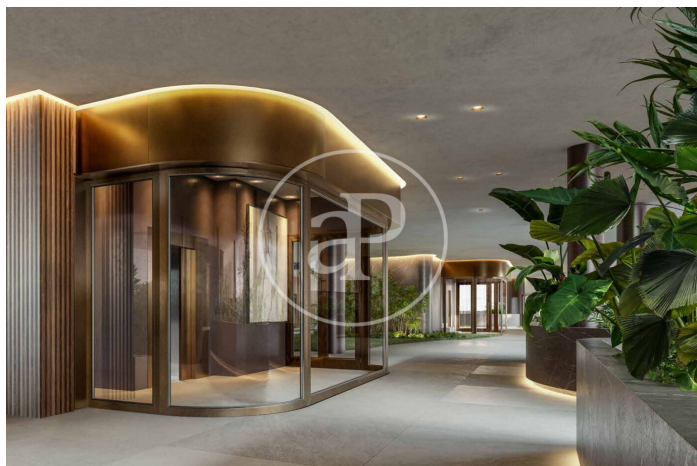
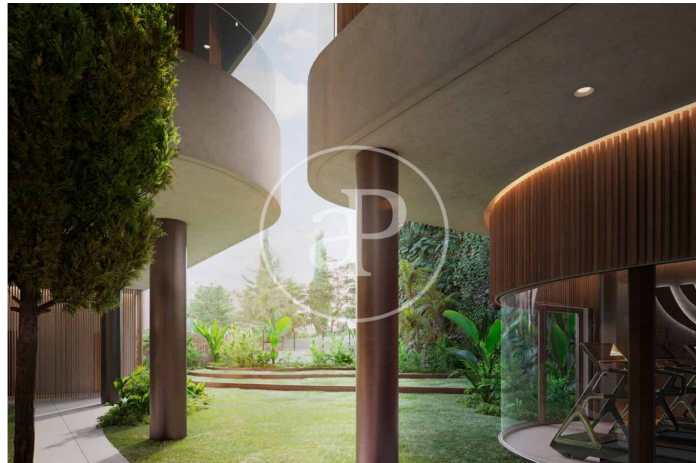
Ref: ONM2409002





(El Viso)

Ref: ONM2409002



The information about any property is not binding to any offer or contract. Any verbal or written declaration made by aProperties with regards to the value or condition of the property should not be considered accurate or factual. The pictures make reference to some parts of the property at the times that they were taken. The areas, dimensions and distances that are given are approximate and should be checked by the client. The images are computer generated and are just an approximate indication of the real appearance of the property; these may change at any time. The information with regards to the property may also change at any time.

Contact us today for more information or to arrange a viewing

Tel: 91 800 54 65 [apropertiesmadrid@aproperties.es](mailto:apropertiesmadrid@aproperties.es) <https://www.aproperties.es>