

El Viso, Madrid

REF. VM2403051



## House for sale in calle Tambre

### Features

- ✓ Views
- ✓ Heating
- ✓ Boxroom
- ✓ Terrace
- ✓ Backyard
- ✓ Lift
- ✓ Has parking

Price

**10,000,000 €**

Surface

**995 m<sup>2</sup>**

Bedrooms

**10**

Bathrooms

**8**



### House in Serrano corner without urban protection.

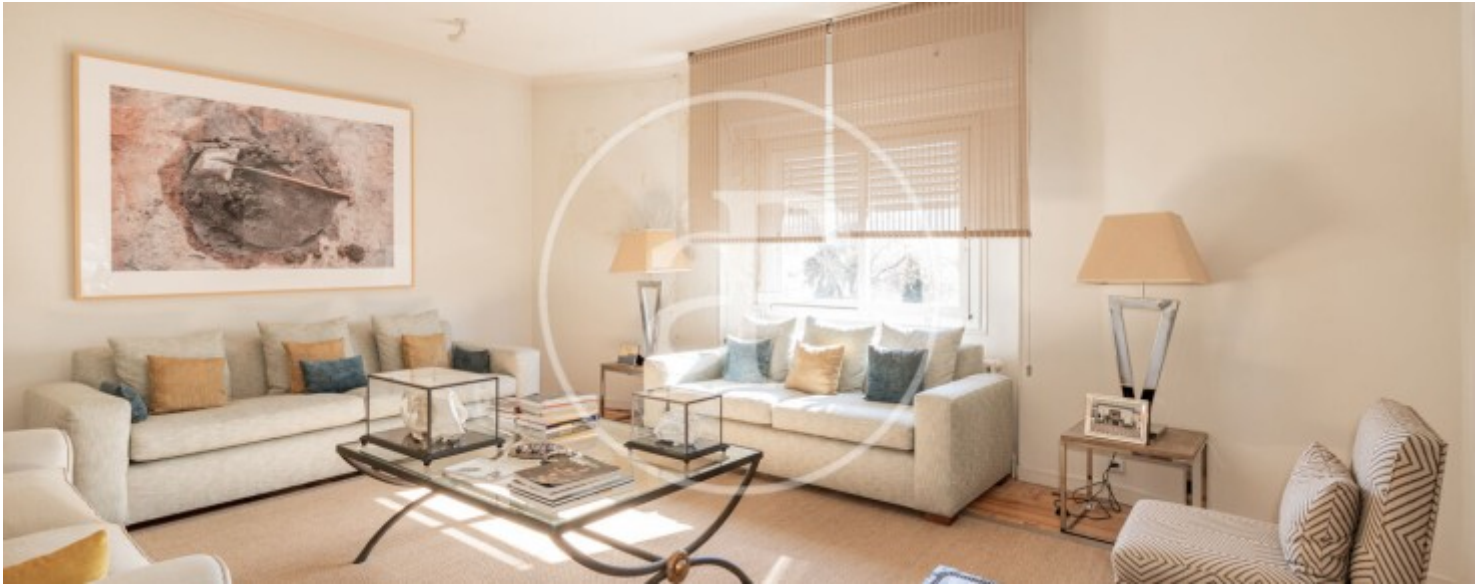
The property currently consists of 995 meters built on a plot of 505 square meters. It consists of 4 floors of 200 meters each one of them accessed by lift or stairs. It is distributed in four floors; the main one on the ground floor which gives access to the house through two areas, main and service, second and third floor, from this last one you can access to the terrace of the property with spectacular views to all Madrid. In the basement the property has a garage for 4 cars. The property is sold with a commercial premises of 80 metres, annexed to the property with entrance from Serrano street. Both the location

and the orientation of the property is unbeatable. Can you imagine living here?

**Contact us,**  
we will be happy to assist you,  
to offer you more details and information.

El Viso, Madrid

REF. VM2403051





El Viso, Madrid

REF. VM2403051



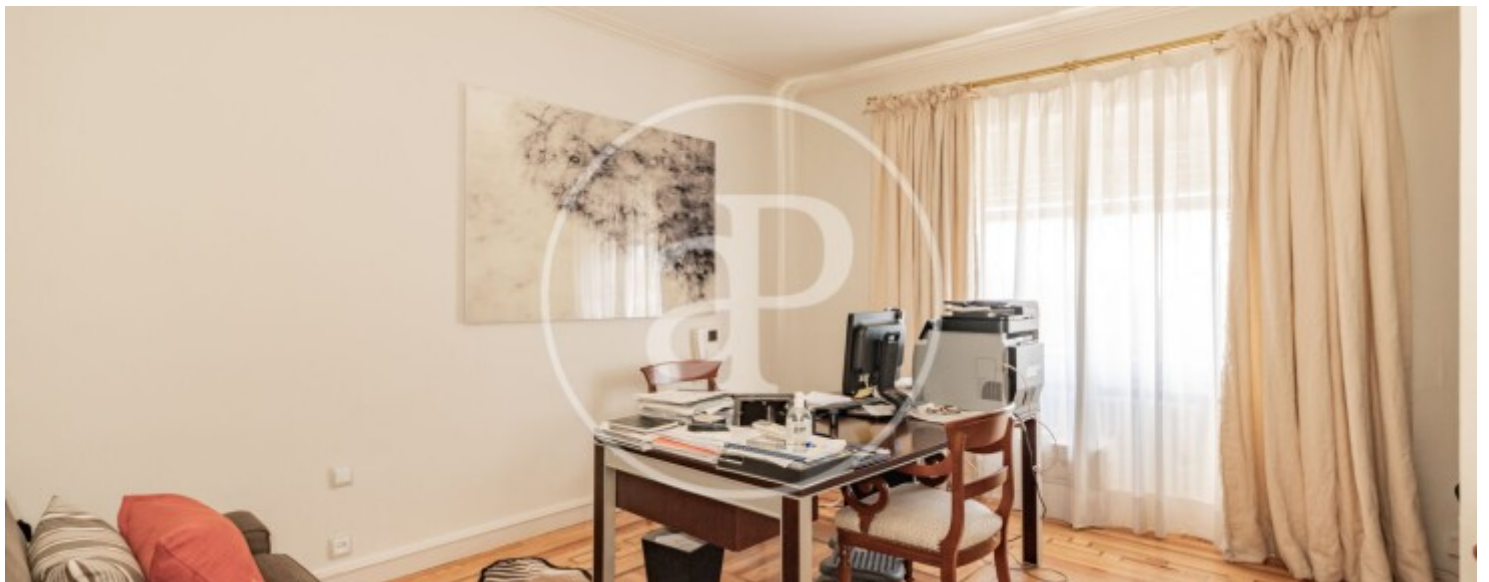


APROPERTIES  
REAL ESTATE

Calle Serrano 60  
28001 Madrid  
T. 91 800 54 65  
[www.aproperties.es](http://www.aproperties.es)

El Viso, Madrid

REF. VM2403051







**APROPERTIES**  
REAL ESTATE

Calle Serrano 60  
28001 Madrid  
T. 91 800 54 65  
[www.aproperties.es](http://www.aproperties.es)

El Viso, Madrid

REF. VM2403051



The information about any property is not binding to any offer or contract. Any verbal or written declaration made by aProperties with regards to the value or condition of the property should not be considered accurate or factual. The pictures make reference to some parts of the property at the times that they were taken. The areas, dimensions and distances that are given are approximate and should be checked by the client. The images are computer generated and are just an approximate indication of the real appearance of the property; these may change at any time. The information with regards to the property may also change at any time.



For **more information** or  
to make an appointment

[apropertiesmadrid@aproperties.es](mailto:apropertiesmadrid@aproperties.es)  
Tel: 91 800 54 65  
[www.aproperties.es](http://www.aproperties.es)