

El Viso, Madrid

REF. AM2605084

Penthouse for rent in El Viso.

Features

- ✓ Views
- ✓ Heating
- ✓ Boxroom
- ✓ AACC
- ✓ Terrace
- ✓ Lift
- ✓ Concierge
- ✓ Has parking

Price

8,500 €

Surface

302 m²

Bedrooms

4

Bathrooms

5



Exclusive luxury penthouse of 302m2 with a complete renovation.

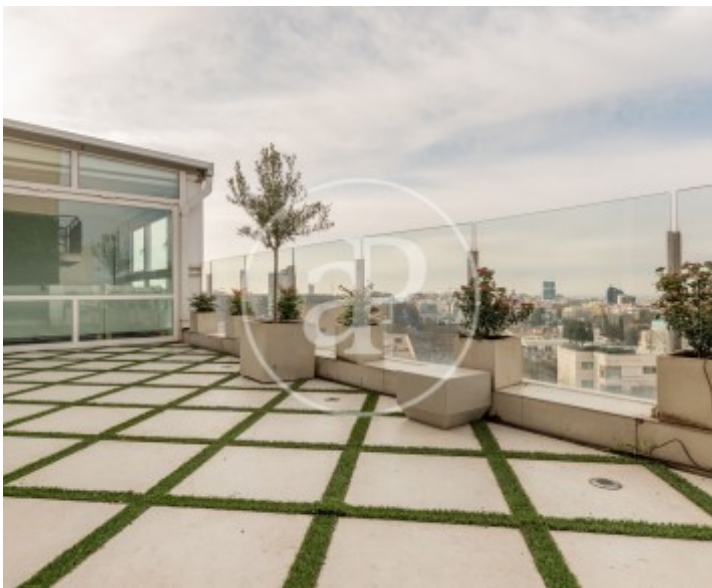
From the entrance, you enter a hallway with coat closets and a guest toilet. The spacious living-dining room features large floor-to-ceiling windows, a south-facing orientation, and direct access to a 30m2 terrace with panoramic views of Madrid. A gas fireplace adds to the inviting atmosphere. The dining room connects to the fully equipped kitchen, which boasts high-end appliances, ample storage, and a laundry room with a washing machine and dryer, as well as a separate service entrance. The hallway leads to the sleeping area. The master bedroom has a large walk-in closet and an en-suite bathroom with a

shower. There are two further bedrooms, one with an en-suite bathroom with a bathtub, and the other with a bathroom in the hallway and a shower. The staff bedroom with its own bathroom is located next to the service entrance. The apartment offers plenty of built-in wardrobes and central heating via radiators. The apartment also has air conditioning. A parking space is also included. The building has a concierge. Prime location on one of the best streets in El Viso, with a wide variety of services, prestigious schools, restaurants, a metro station right outside, and several bus lines. Can...

Contact us,
we will be happy to assist you,
to offer you more details and information.

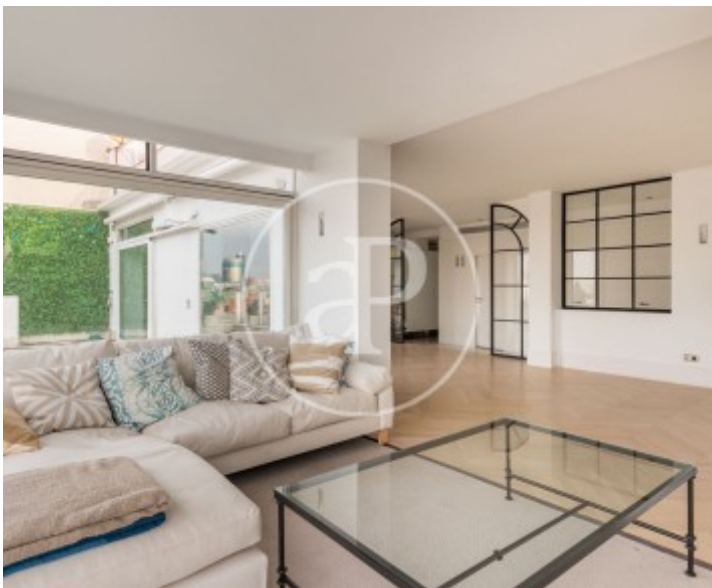
El Viso, Madrid

REF. AM2605084



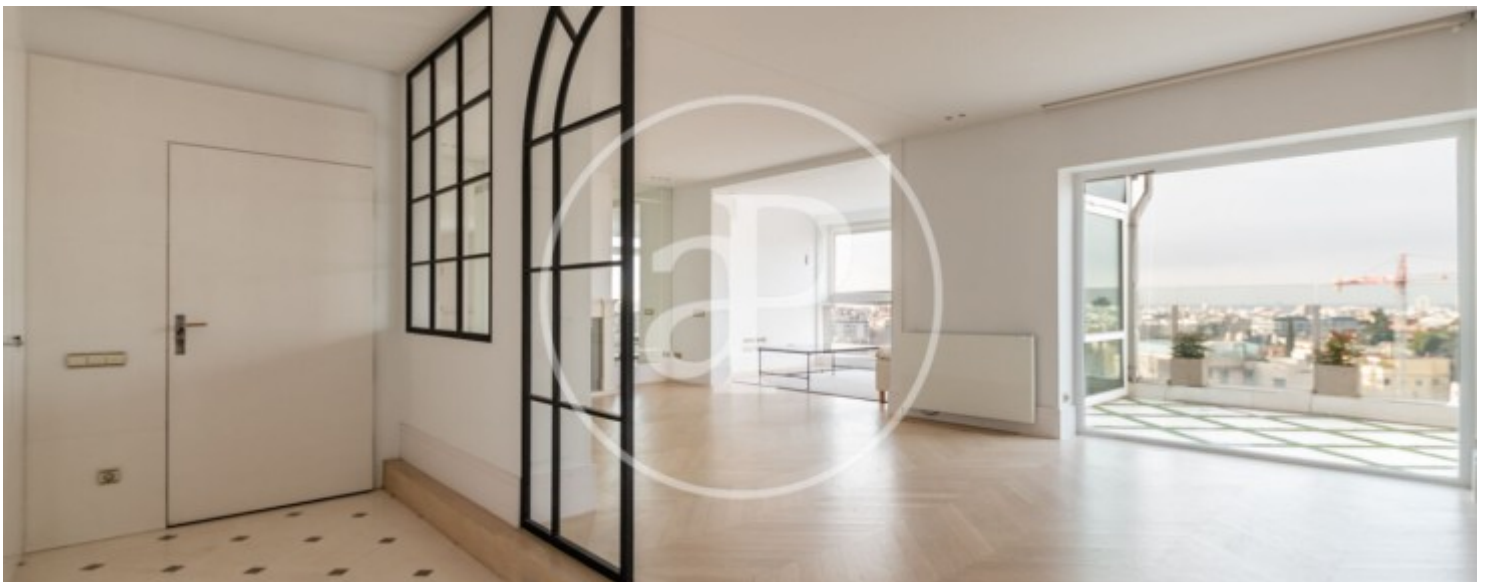
El Viso, Madrid

REF. AM2605084



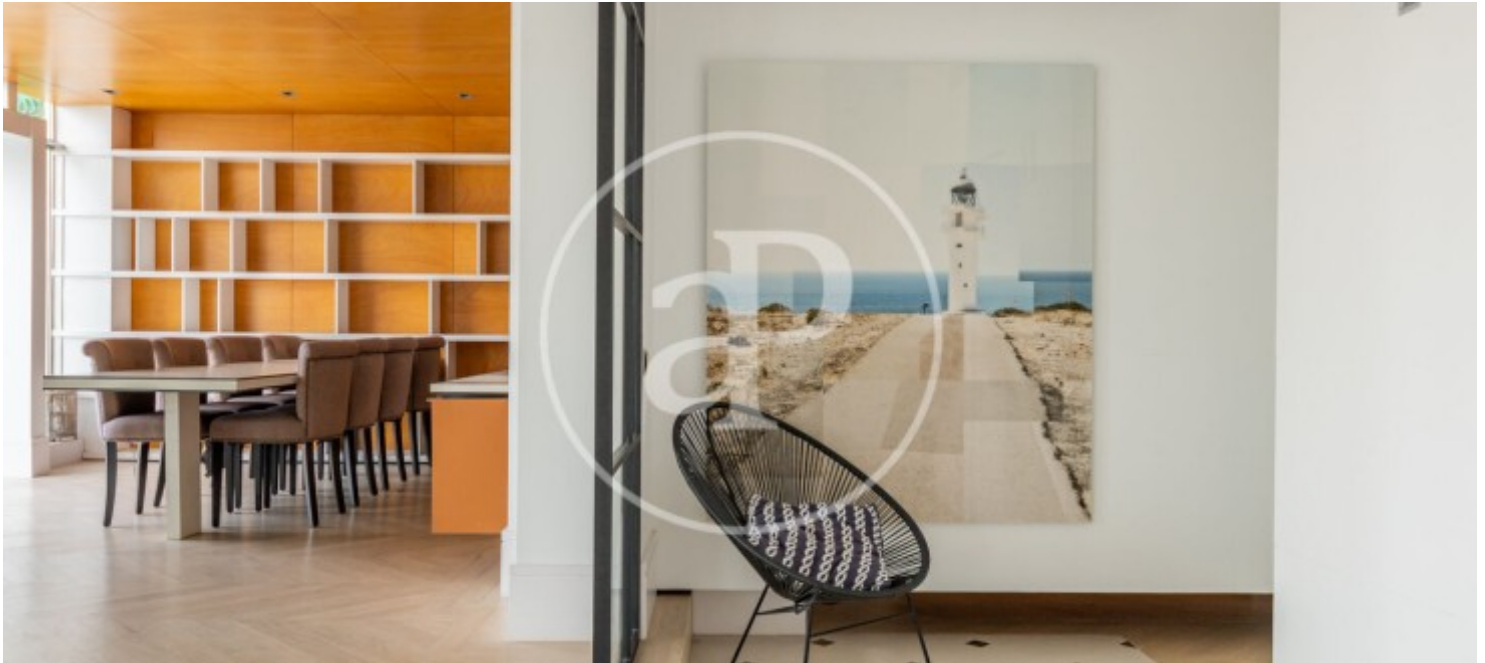
El Viso, Madrid

REF. AM2605084



El Viso, Madrid

REF. AM2605084



The information about any property is not binding to any offer or contract. Any verbal or written declaration made by aProperties with regards to the value or condition of the property should not be considered accurate or factual. The pictures make reference to some parts of the property at the times that they were taken. The areas, dimensions and distances that are given are approximate and should be checked by the client. The images are computer generated and are just an approximate indication of the real appearance of the property; these may change at any time. The information with regards to the property may also change at any time.

For **more information** or
to make an appointment

apropertiesmadrid@aproperties.es
Tel: 91 800 54 65
www.aproperties.es