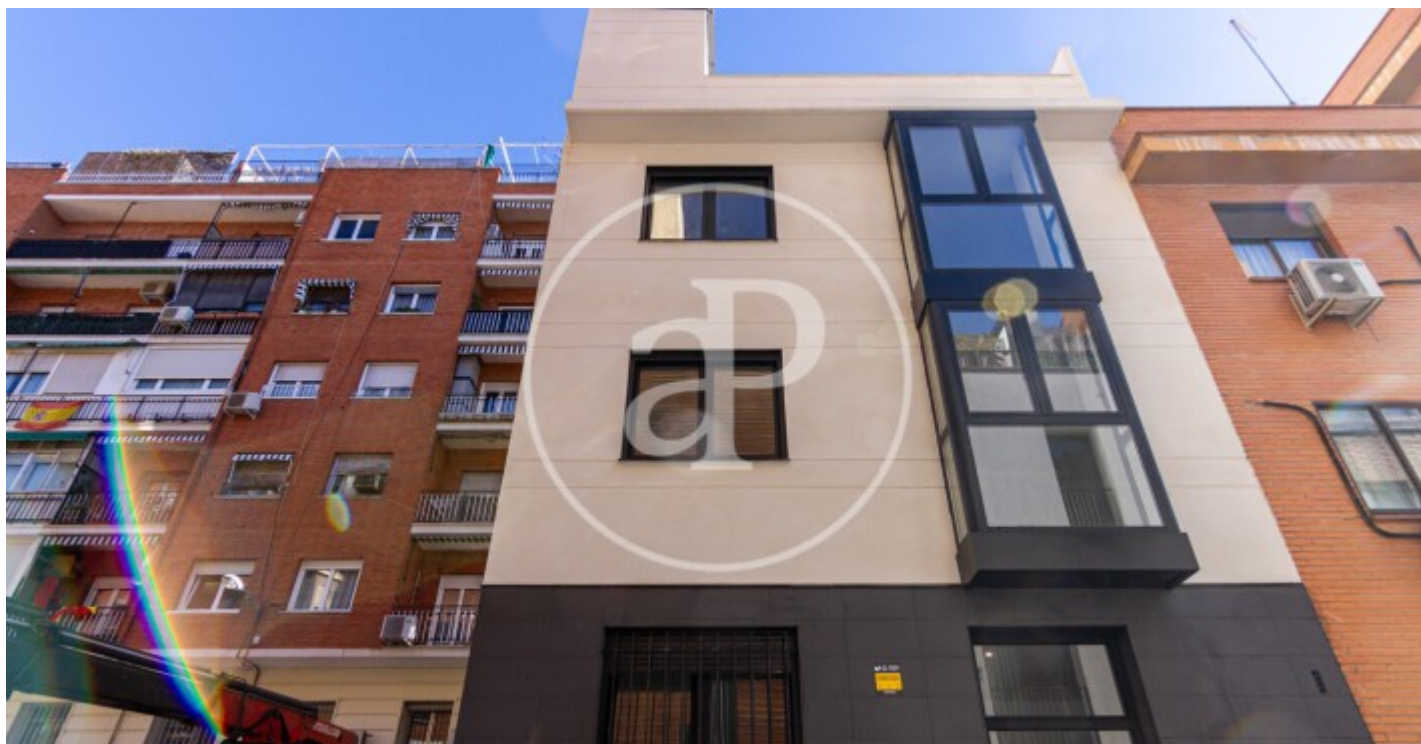


(Cuatro Caminos)

Ref: ONM2304004



## Newly built 1 and 2 bedroom homes in Tetuán

New building located in Tetuán, one of the most promising areas of the capital. Located next to the Azca financial center and the Santiago Bernabeu. In the area you will find a wide range of leisure and gastronomy and the best public transport thanks to its proximity to several subway stations as well as the Nuevos Ministerios interchange. We have 1 and 2-bedroom apartments of between 68 m<sup>2</sup> and 90 m<sup>2</sup>, which also have a terrace on the first floor and penthouse. The interior spaces are designed to enjoy and guarantee comfort, giving priority to the warmth of the light that enters through the large windows and the spacious, comfortable and functional spaces. The main qualities are: Concrete structure / Facade with high performance insulation / Aluminum exterior carpentry with electric shutters / Security access door / Built-in closets / Laminate flooring in living room and bedrooms and porcelain tile in kitchen and bathrooms / Ceramic tiling in bathrooms and kitchen / Fully equipped kitchens / Underfloor heating and cooling by aerothermal / Storage room.

Madrid / Cuatro Caminos

Unit 3 A

Completion Q2 2022

### FEATURES

Surface 68 m<sup>2</sup> / 15 m<sup>2</sup> terrace

1 Rooms

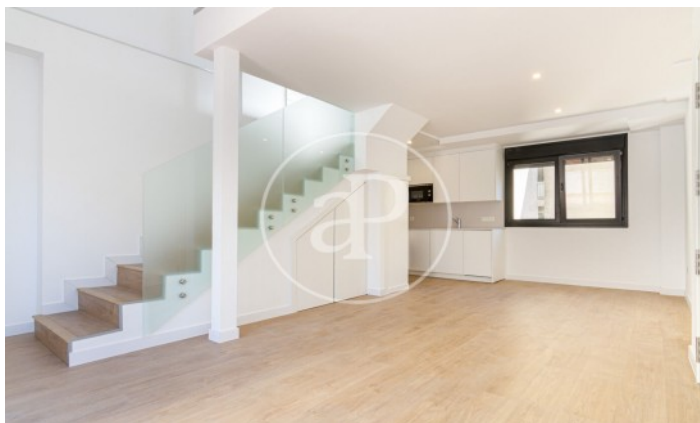
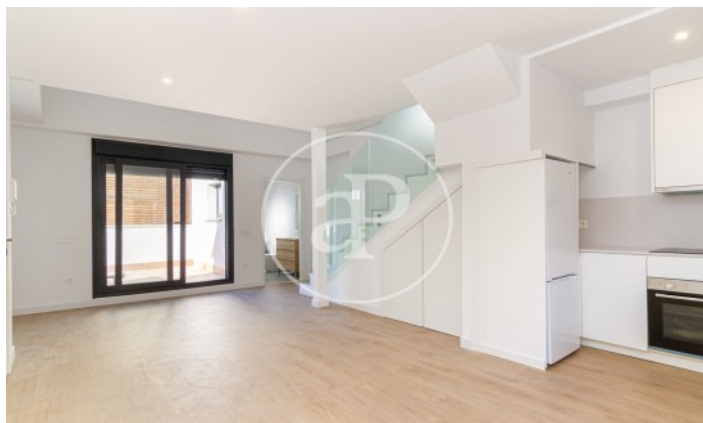
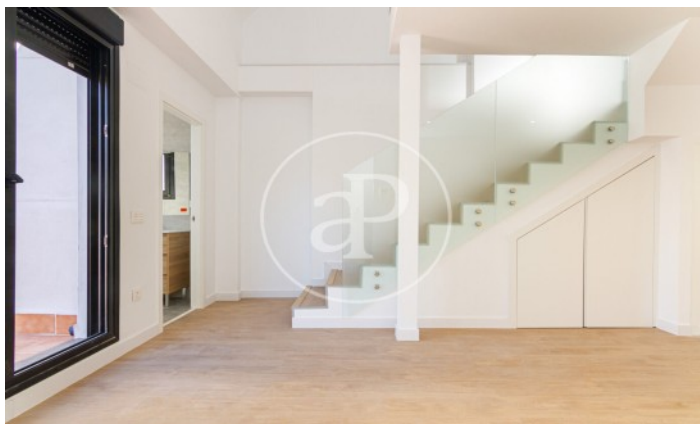
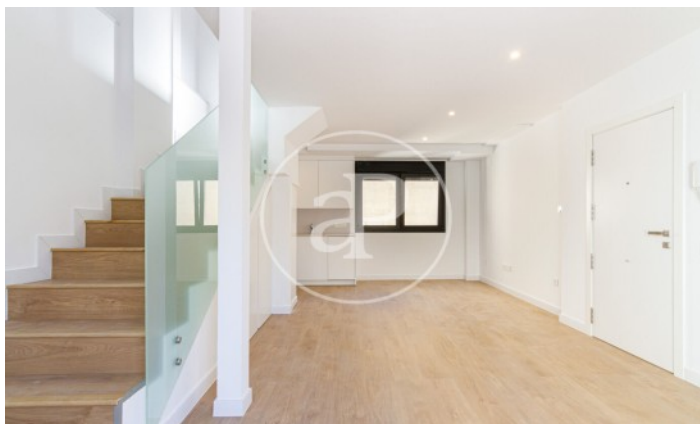
1 Toilets

- ✓ Heating
- ✓ Boxroom
- ✓ AACC
- ✓ Terrace
- ✓ Backyard
- ✓ Lift

Price 485,000 €

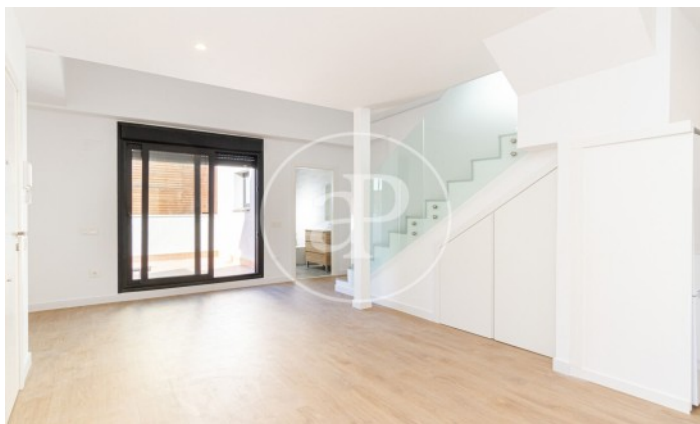
(Cuatro Caminos)

Ref: ONM2304004



(Cuatro Caminos)

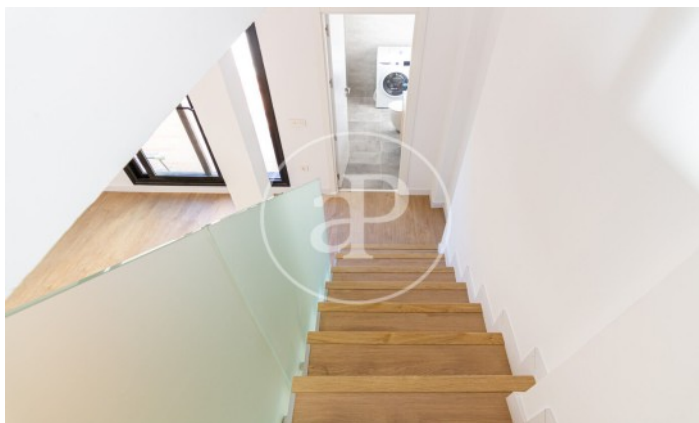
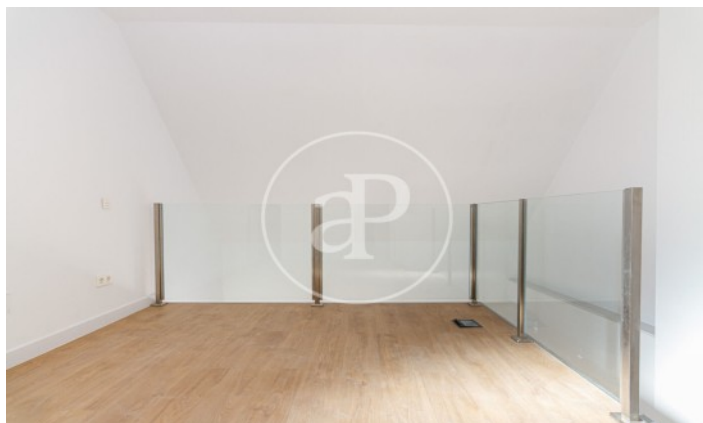
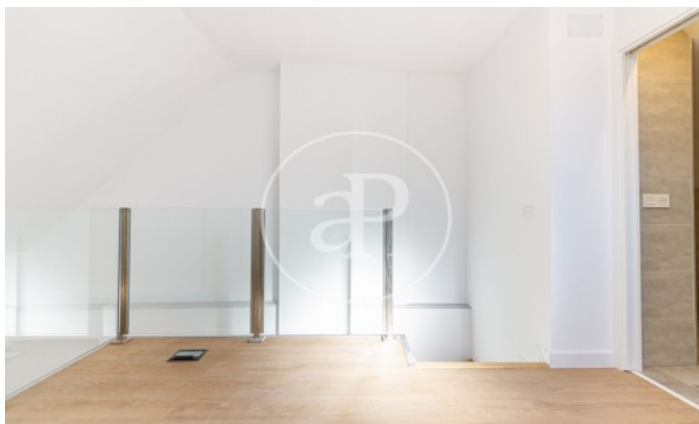
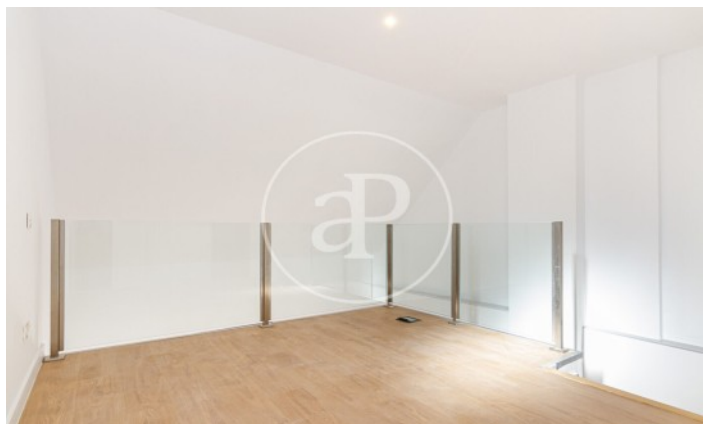
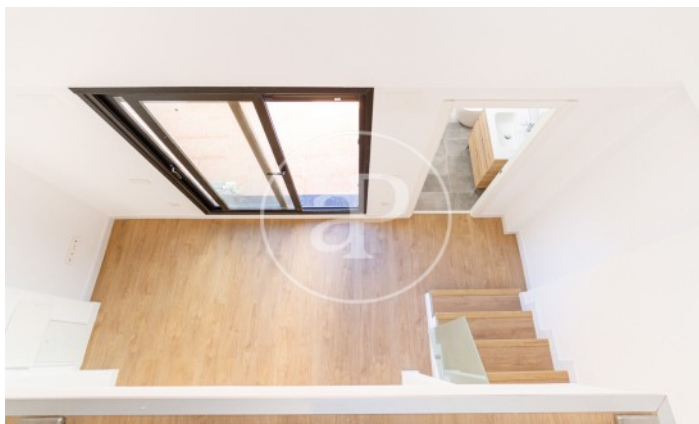
Ref: ONM2304004





(Cuatro Caminos)

Ref: ONM2304004



The information about any property is not binding to any offer or contract. Any verbal or written declaration made by aProperties with regards to the value or condition of the property should not be considered accurate or factual. The pictures make reference to some parts of the property at the times that they were taken. The areas, dimensions and distances that are given are approximate and should be checked by the client. The images are computer generated and are just an approximate indication of the real appearance of the property; these may change at any time. The information with regards to the property may also change at any time.

Contact us today for more information or to arrange a viewing

Tel: 91 800 54 65

[apropertiesmadrid@aproperties.es](mailto:apropertiesmadrid@aproperties.es)

<https://www.aproperties.es>