

(Ciudad Jardín)

Ref: ONM2109016



New build luxury construction in Madrid

Last properties available in Madrid's Soho. Fantastic 1, 2 and 3 bedroom flats in different typologies: penthouses with large terraces and duplexes with private gardens. The development has the latest technology to make life easier for its owners: fingerprint to access the house, intelligent self-regulating blinds to better control the entry of light, underfloor heating and chilled ceiling cooling. In addition, the project will follow the design guidelines of the Passivhaus standard with smart, practical and efficient layouts. The heating, cooling and hot water installations are also centralised for the entire building with a combination of the most efficient and ecological systems on the market: geothermal heat pump system, photovoltaic system, floor-to-ceiling windows and windows with wood and aluminium. The communal areas will not be lacking either, specially equipped with spaces worthy of the best urbanisations on the outskirts of the city, such as a fully equipped glassed-in gymnasium, green areas designed by Isabel Duprat, one of the best landscape designers in the world, with a 25 m linear outdoor swimming pool, SPA with sauna, indoor swimming pool, Jacuzzi, relaxation ro [...]

Madrid / Ciudad Jardín

Unit 2 202

Completion Q3 2024

FEATURES

Surface 180 m²

2 Rooms

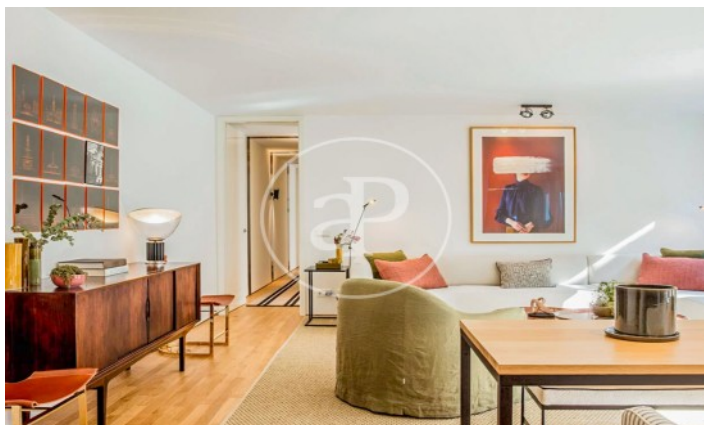
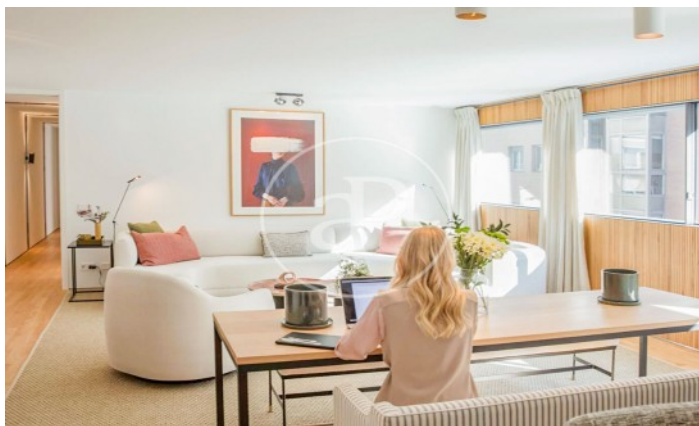
2 Toilets 1 Restrooms

- ✓ Heating
- ✓ Boxroom
- ✓ AACC
- ✓ Backyard
- ✓ Pool
- ✓ Gym
- ✓ Lift
- ✓ Security
- ✓ Concierge
- ✓ Has parking

Price 1,369,430 €

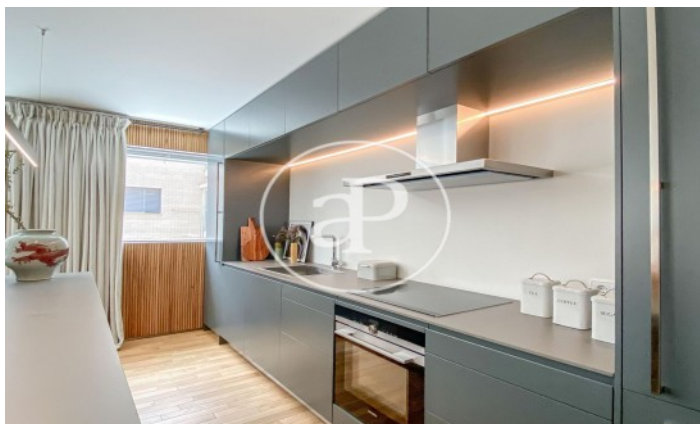
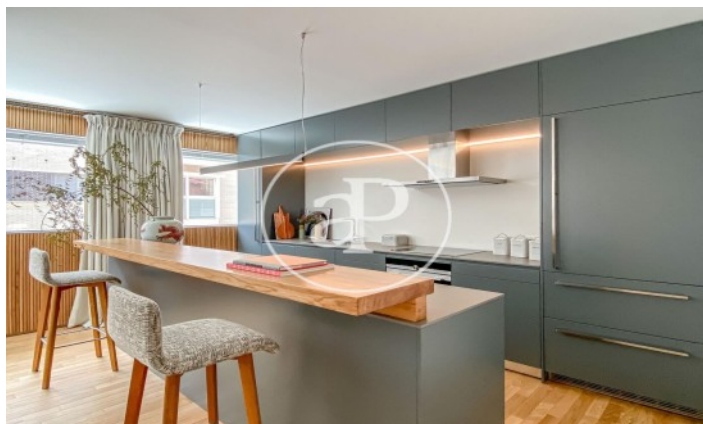
(Ciudad Jardín)

Ref: ONM2109016



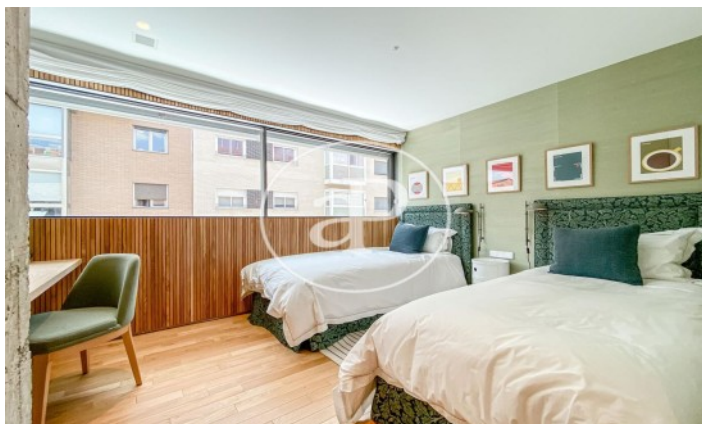
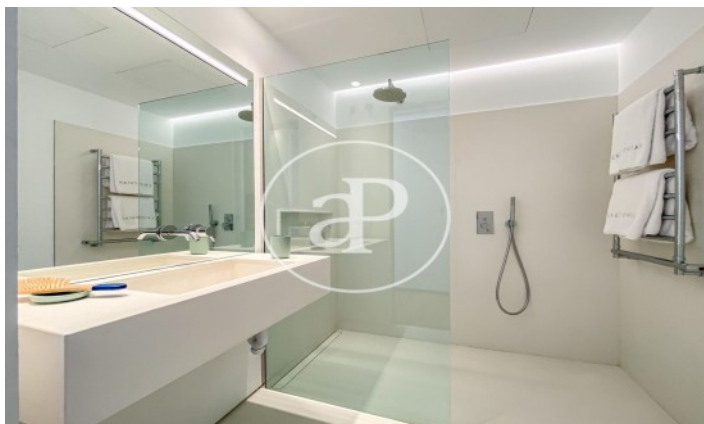
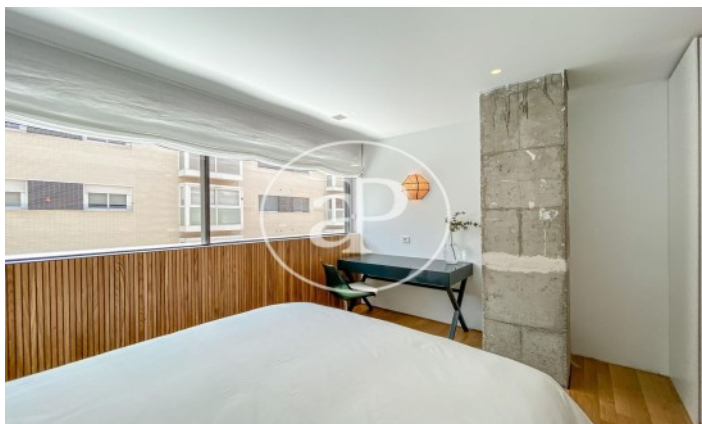
(Ciudad Jardín)

Ref: ONM2109016



(Ciudad Jardín)

Ref: ONM2109016



The information about any property is not binding to any offer or contract. Any verbal or written declaration made by aProperties with regards to the value or condition of the property should not be considered accurate or factual. The pictures make reference to some parts of the property at the times that they were taken. The areas, dimensions and distances that are given are approximate and should be checked by the client. The images are computer generated and are just an approximate indication of the real appearance of the property; these may change at any time. The information with regards to the property may also change at any time.

Contact us today for more information or to arrange a viewing

Tel: 91 800 54 65

apropertiesmadrid@aproperties.es

<https://www.aproperties.es>