

Chueca - Justicia, Madrid

REF. VM2605026

Flat for sale in Justicia

Features

- ✓ Heating
- ✓ Boxroom
- ✓ Lift
- ✓ Furnished
- ✓ AACC
- ✓ Concierge

Price
1,049,000 €

Surface
75 m²

Bedrooms
2

Bathroom
1



Located on Piamonte street, in the sought-after Justicia neighborhood, this property represents an excellent investment opportunity in one of the most sought-after areas of central Madrid.

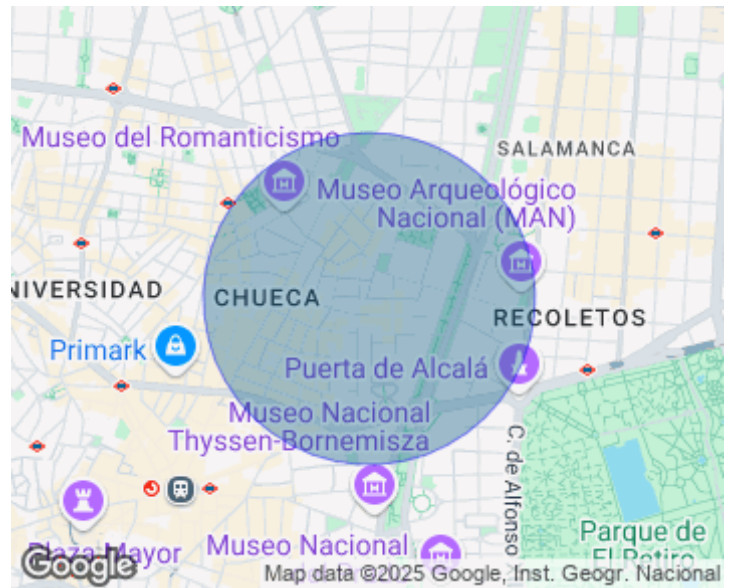
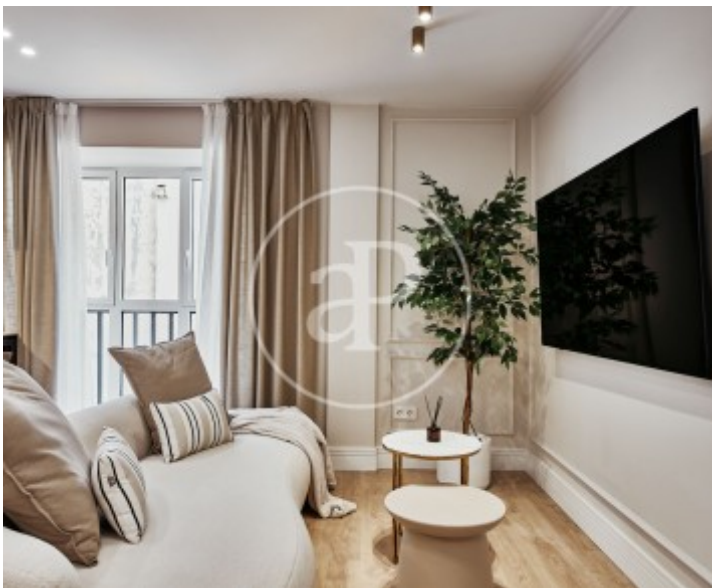
With a surface area of approximately 75 m², the property is located on a second floor with elevator within a classic building with concierge and concierge service. The house has been designed to maximize functionality and comfort, distributed in two double bedrooms, a full bathroom, and a living area that integrates living room, dining room and fully equipped kitchen. The property has heating, air conditioning and is furnished, allowing immediate entry or exploitation in the

premium rental market. Its interior character guarantees tranquility and privacy in the city center. The district of Justicia has established itself as one of the most exclusive enclaves in Madrid, standing out for its combination of rehabilitated classical architecture, high-level gastronomic offer, independent boutiques and proximity to emblematic areas such as Recoletos and Serrano. Its excellent connection to cultural, commercial and leisure areas reinforces its attractiveness for both habitual residence and investment. A property that combines strategic location, contemporary design and...

Contact us,
we will be happy to assist you,
to offer you more details and information.

Chueca - Justicia, Madrid

REF. VM2605026



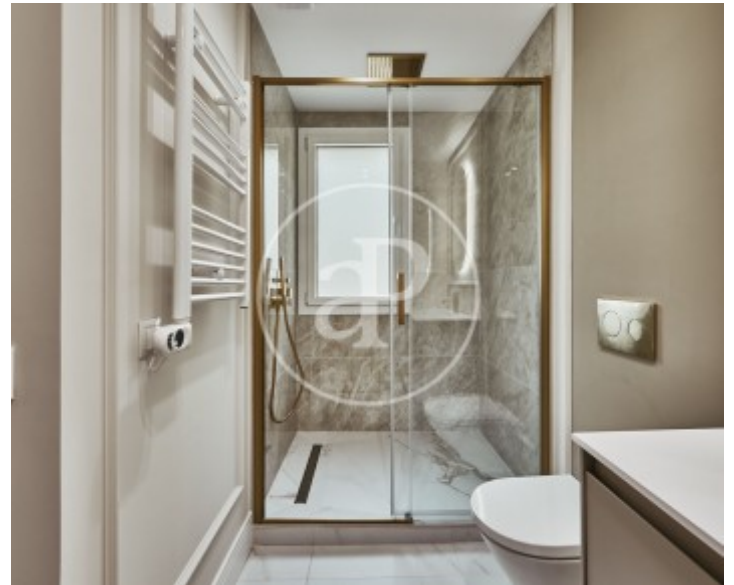
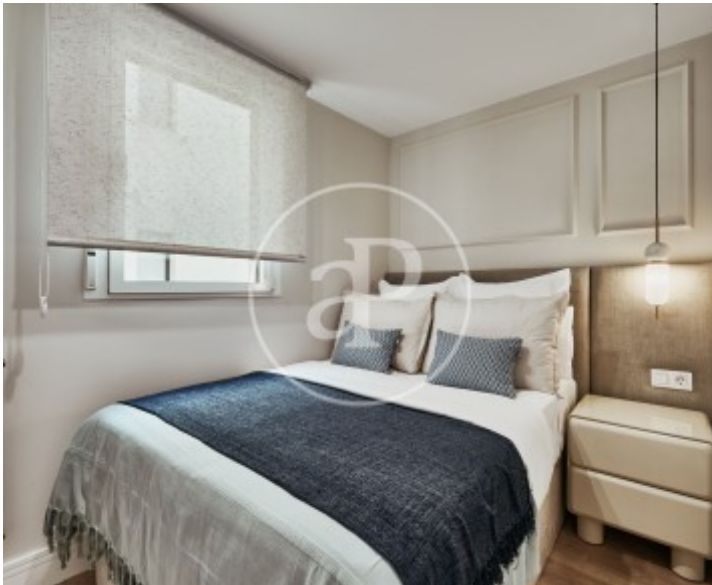
Chueca - Justicia, Madrid

REF. VM2605026



Chueca - Justicia, Madrid

REF. VM2605026



The information about any property is not binding to any offer or contract. Any verbal or written declaration made by aProperties with regards to the value or condition of the property should not be considered accurate or factual. The pictures make reference to some parts of the property at the times that they were taken. The areas, dimensions and distances that are given are approximate and should be checked by the client. The images are computer generated and are just an approximate indication of the real appearance of the property; these may change at any time. The information with regards to the property may also change at any time.

For **more information** or
to make an appointment

apropertiesmadrid@aproperties.es
Tel: 91 800 54 65
www.aproperties.es