

Chueca - Justicia, Madrid

REF. AM1702003



Spectacular luxury homes in the Chueca neighborhood

Features

- ✓ Views
- ✓ Heating
- ✓ Furnished
- ✓ AACC
- ✓ Terrace
- ✓ Gym
- ✓ Lift
- ✓ Concierge

Price

3,300 €

Bedrooms

2

Bathrooms

2



From the architect Antonio Farres Aymerich, the building is part of the set of emblematic buildings of the Modernist Madrid of the early 19th century.

The elegance of the façade gives a glimpse of modernist lintels, corbels, but it is the entrance hall to the that takes us to the very heart of the "art nouveau" of Paris, which with the staircase adorned with vegetal elements of Painted plaster forms as a whole a modernist air that surprises by its elegance and its beauty. All the housings of the building have television, internet, individual heating, air conditioning, fully furnished kitchen; washing machine, dryer, refrigerator, oven,

microwave, dishwasher, induction hob, double set of sheets and towels, kitchen utensils and small household appliances (blender, toaster, Nesspresso, hairdryer, iron, water kettle). In addition, electricity, water and gas services (up to 250 / month), gym, Internet connection, weekly cleaning time, physical concierge 5 days a week.

Contact us,
we will be happy to assist you,
to offer you more details and information.

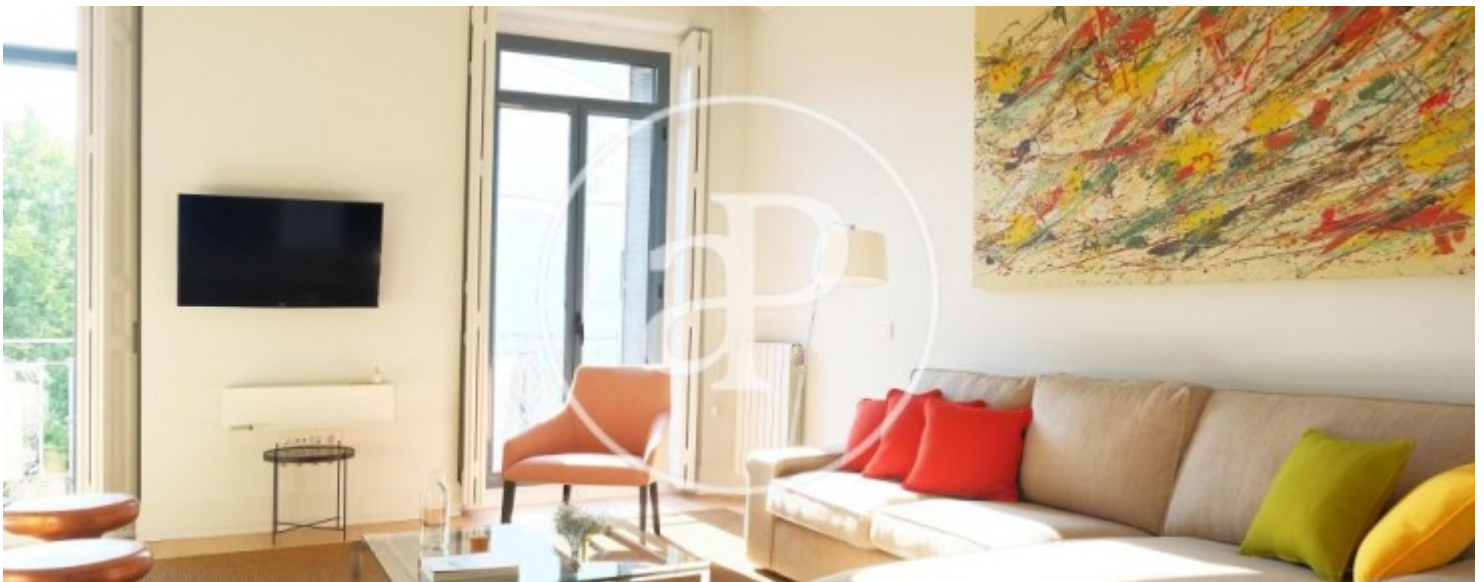


APROPERTIES
REAL ESTATE

Calle Serrano 60
28001 Madrid
T. 91 800 54 65
www.aproperties.es

Chueca - Justicia, Madrid

REF. AM1702003



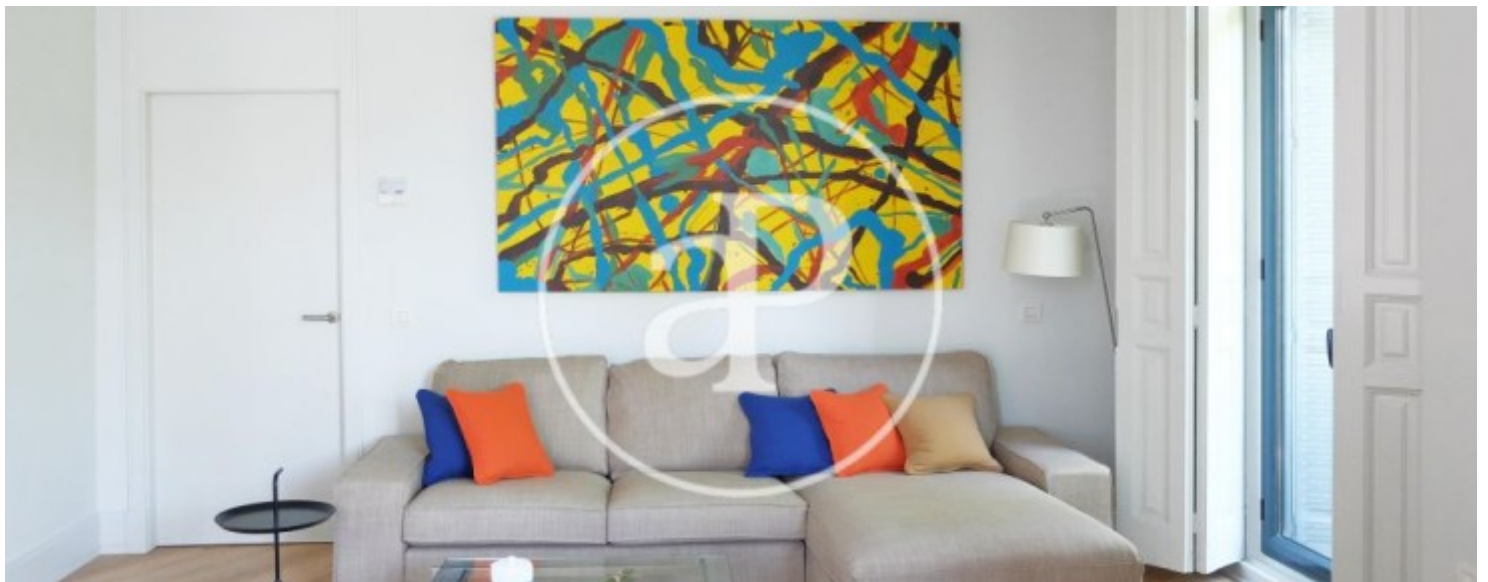


APROPERTIES
REAL ESTATE

Calle Serrano 60
28001 Madrid
T. 91 800 54 65
www.aproproperties.es

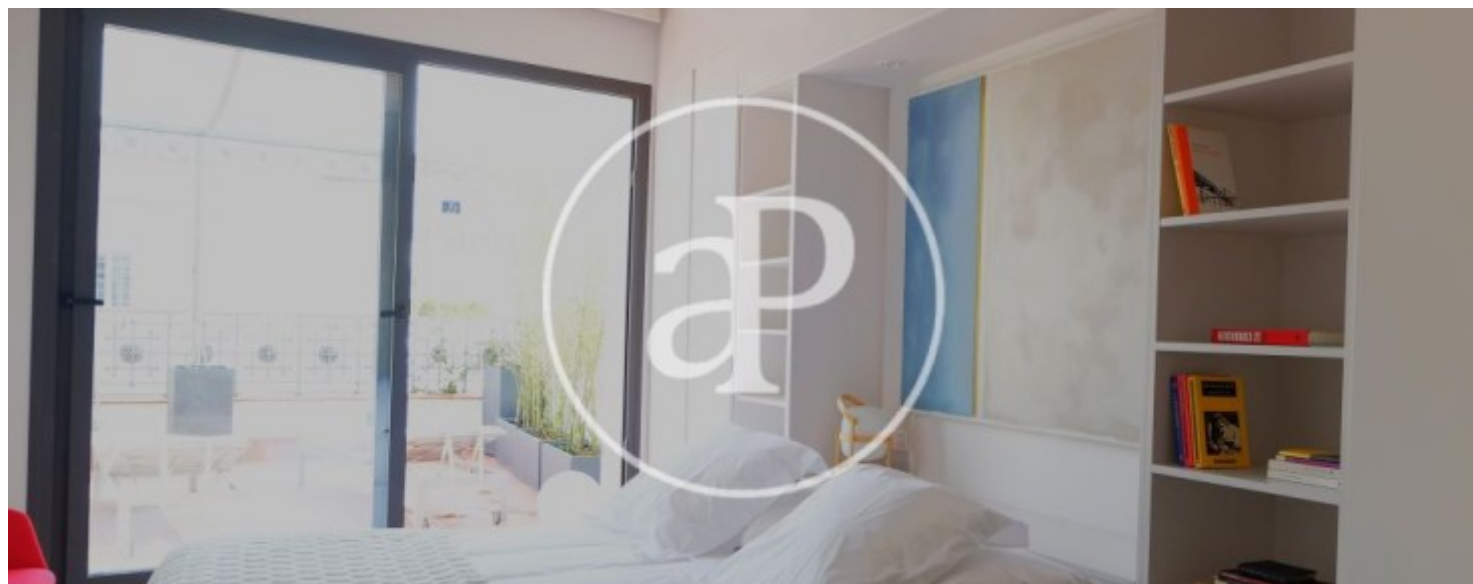
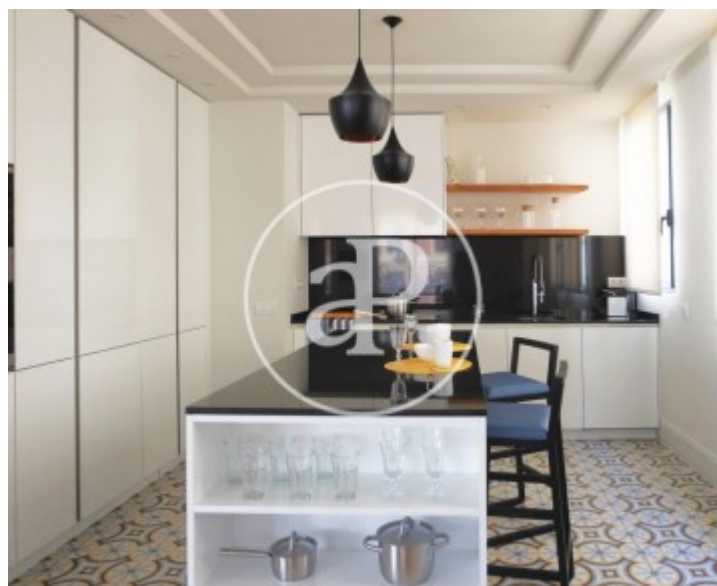
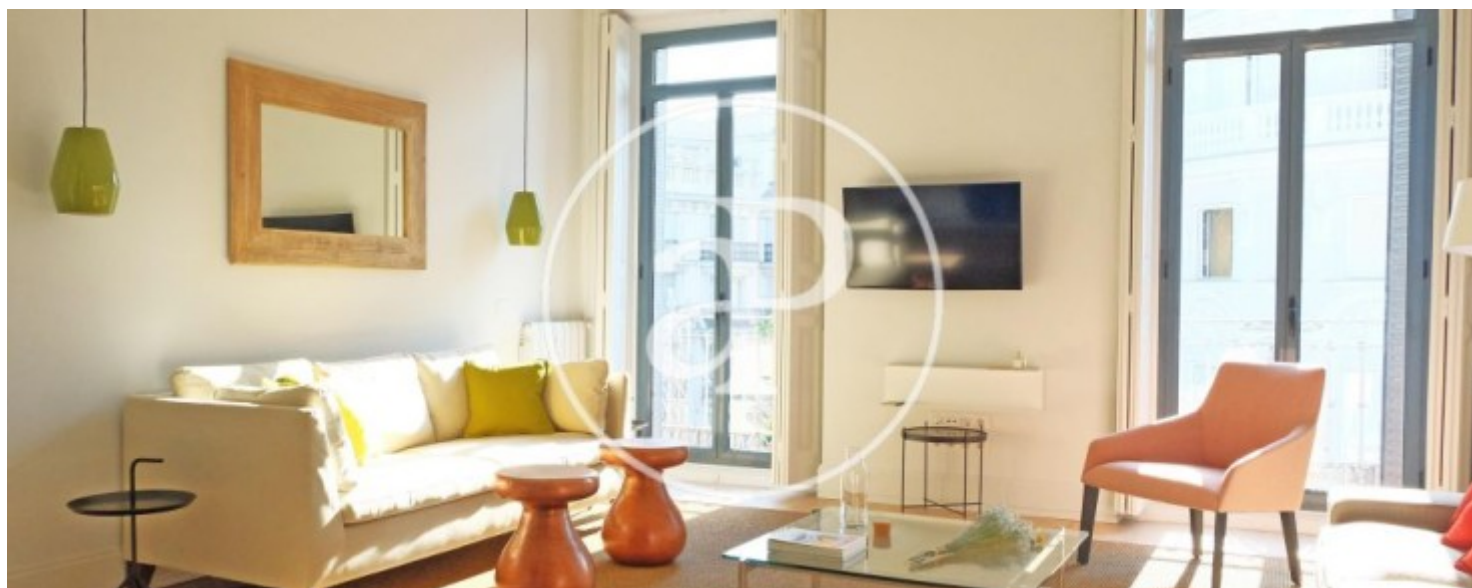
Chueca - Justicia, Madrid

REF. AM1702003



Chueca - Justicia, Madrid

REF. AM1702003



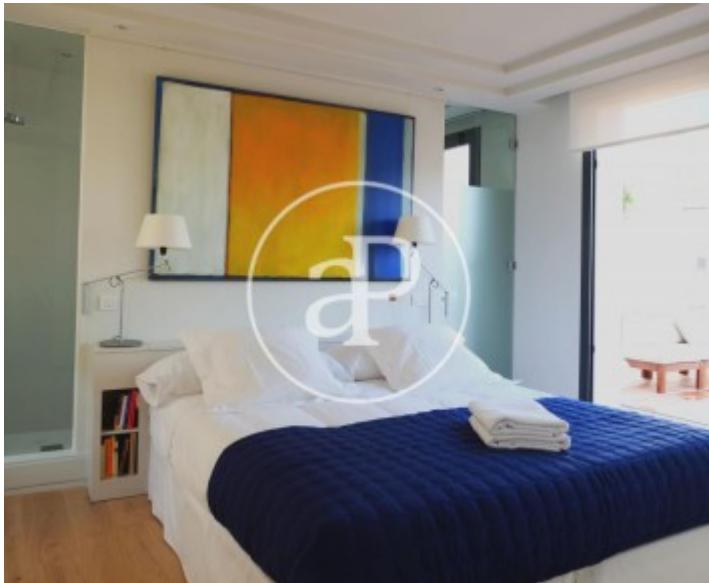
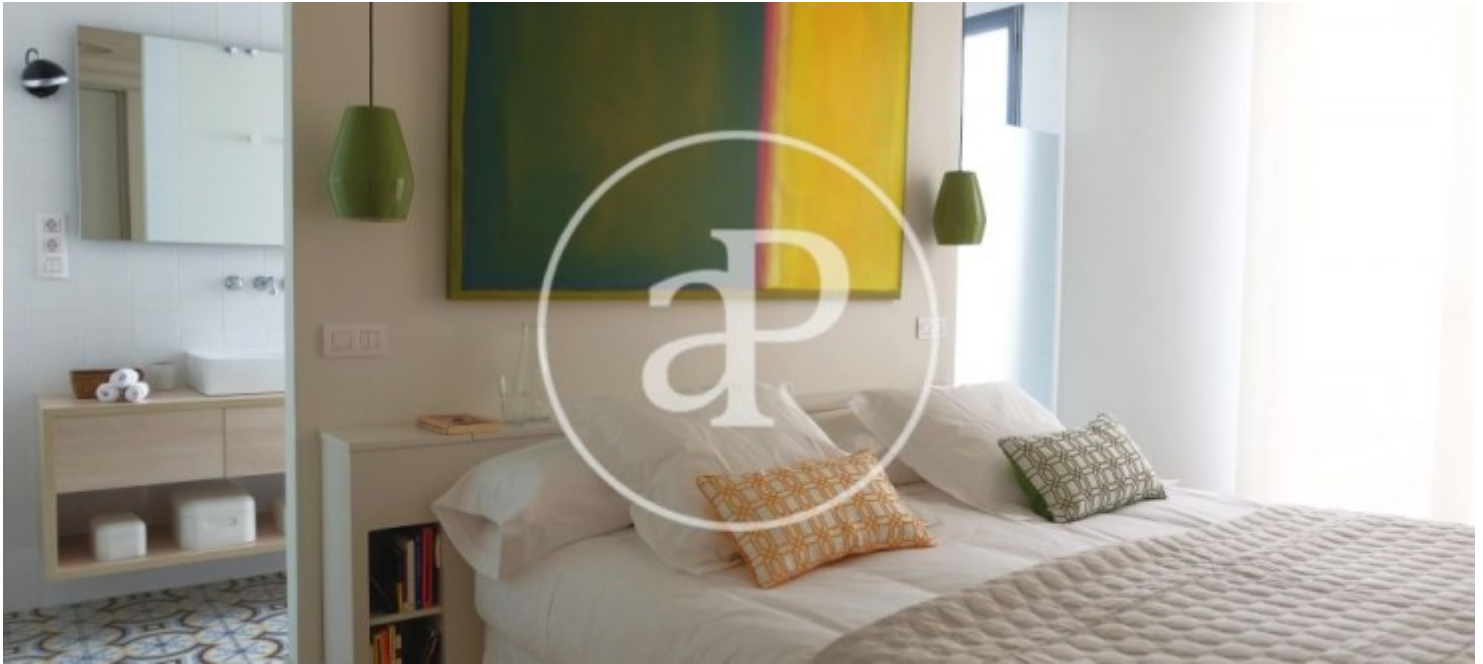


APROPERTIES
REAL ESTATE

Calle Serrano 60
28001 Madrid
T. 91 800 54 65
www.aproperties.es

Chueca - Justicia, Madrid

REF. AM1702003



The information about any property is not binding to any offer or contract. Any verbal or written declaration made by aProperties with regards to the value or condition of the property should not be considered accurate or factual. The pictures make reference to some parts of the property at the times that they were taken. The areas, dimensions and distances that are given are approximate and should be checked by the client. The images are computer generated and are just an approximate indication of the real appearance of the property; these may change at any time. The information with regards to the property may also change at any time.



For **more information** or
to make an appointment

apropertiesmadrid@aproperties.es
Tel: 91 800 54 65
www.aproperties.es