

Chueca - Justicia, Madrid

REF. VM2404040



Flat for sale in calle San Mateo

Features

- ✓ Heating ✓ AACC
- ✓ Lift

Price

2,490,000 €

Surface

235 m²

Bedrooms

3

Bathrooms

4



In the emblematic neighbourhood of Justicia, in one of its most emblematic streets, Calle San Mateo, aProperties is offering for sale this beautiful exterior property, completely refurbished and brand new. It is located on the first floor and has 235 m², distributed in a day area consisting of a very spacious and elegant living room with decorative fireplace, very bright thanks to the five balconies from which you can enjoy a great view. The designer kitchen, integrated in the living room, with island and large storage capacity, is fully equipped with top of the range appliances. The sleeping area consists of 3 double bedrooms, one of them in the living room area as an office or dining room. The master bedroom has an impressive en-suite bathroom and fitted wardrobes. In addition, a second

bathroom and a guest toilet in the hallway. The high ceilings, adorned with beautiful mouldings, has been completely and comprehensively refurbished to the highest quality standards, with top quality materials, wooden flooring and perfect direct and indirect lighting. It has individual gas heating and ducted air conditioning in all the rooms of the house with airzone system. The property has a lift. Can you imagine living here?

Contact us,
we will be happy to assist you,
to offer you more details and information.

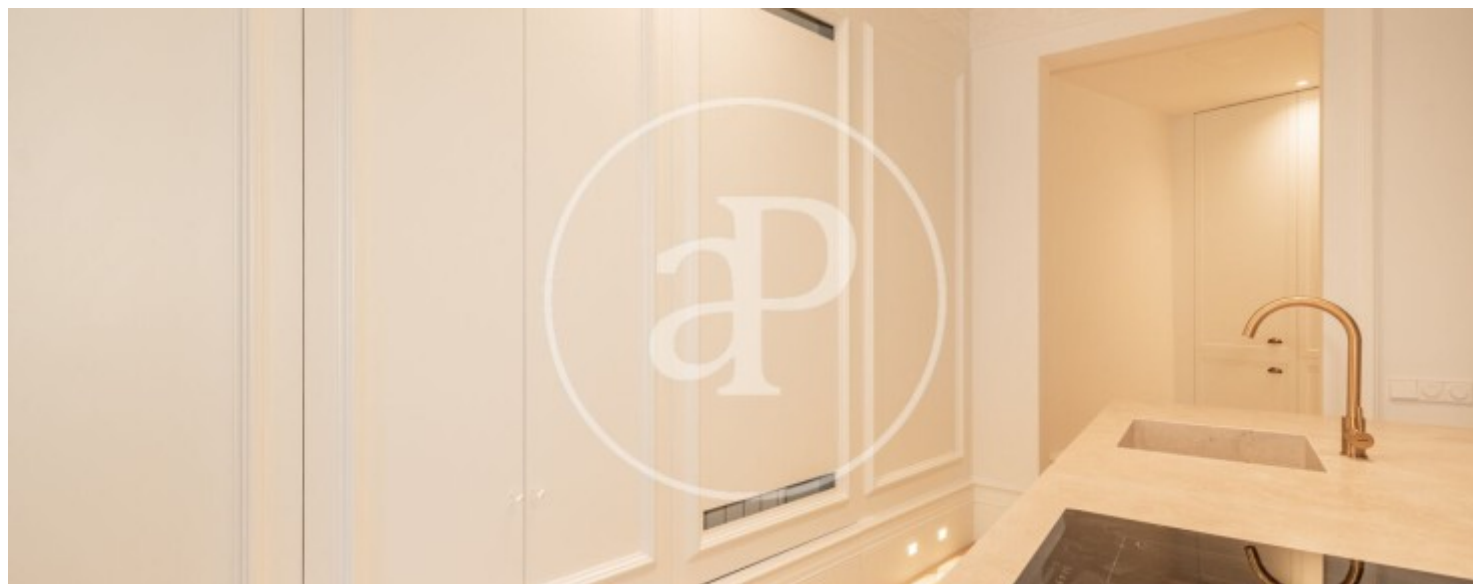
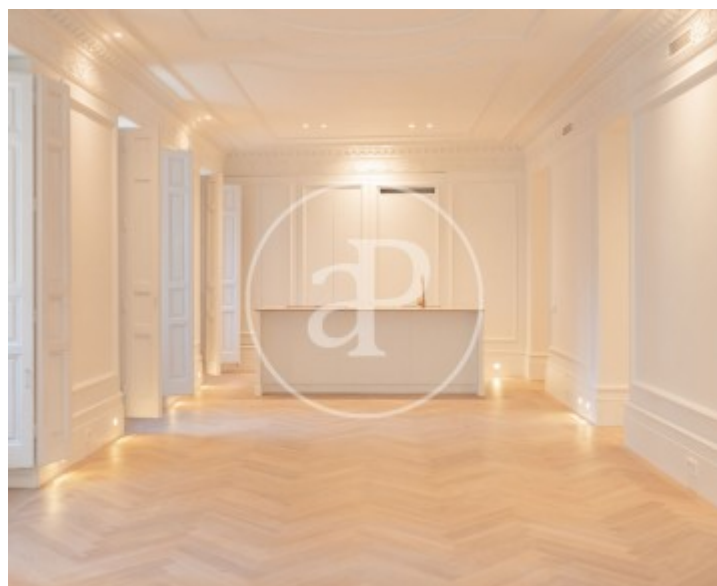
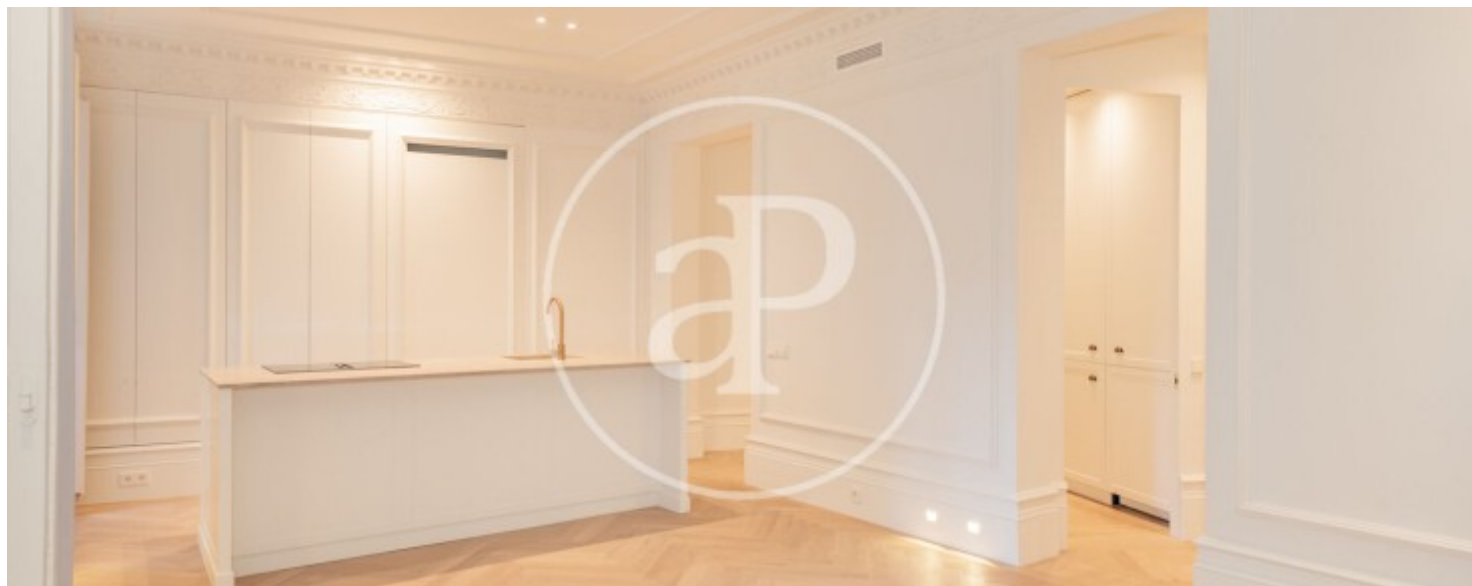
Chueca - Justicia, Madrid

REF. VM2404040



Chueca - Justicia, Madrid

REF. VM2404040





APROPERTIES
REAL ESTATE

Calle Serrano 60
28001 Madrid
T. 91 800 54 65
www.aproperties.es

Chueca - Justicia, Madrid

REF. VM2404040



Chueca - Justicia, Madrid

REF. VM2404040



The information about any property is not binding to any offer or contract. Any verbal or written declaration made by aProperties with regards to the value or condition of the property should not be considered accurate or factual. The pictures make reference to some parts of the property at the times that they were taken. The areas, dimensions and distances that are given are approximate and should be checked by the client. The images are computer generated and are just an approximate indication of the real appearance of the property; these may change at any time. The information with regards to the property may also change at any time.



For **more information** or
to make an appointment

apropertiesmadrid@aproperties.es
Tel: 91 800 54 65
www.aproperties.es