

Chueca - Justicia, Madrid

REF. AM2601015

Flat for rent in Chueca-Justicia.

Features

- ✓ Views
- ✓ Furnished
- ✓ Backyard
- ✓ Lift
- ✓ Heating
- ✓ AACC
- ✓ Gym
- ✓ Concierge

Price

4,620 €

Surface
120 m²

Bedrooms
2

Bathrooms
2



AVAILABLE IN MARCH.

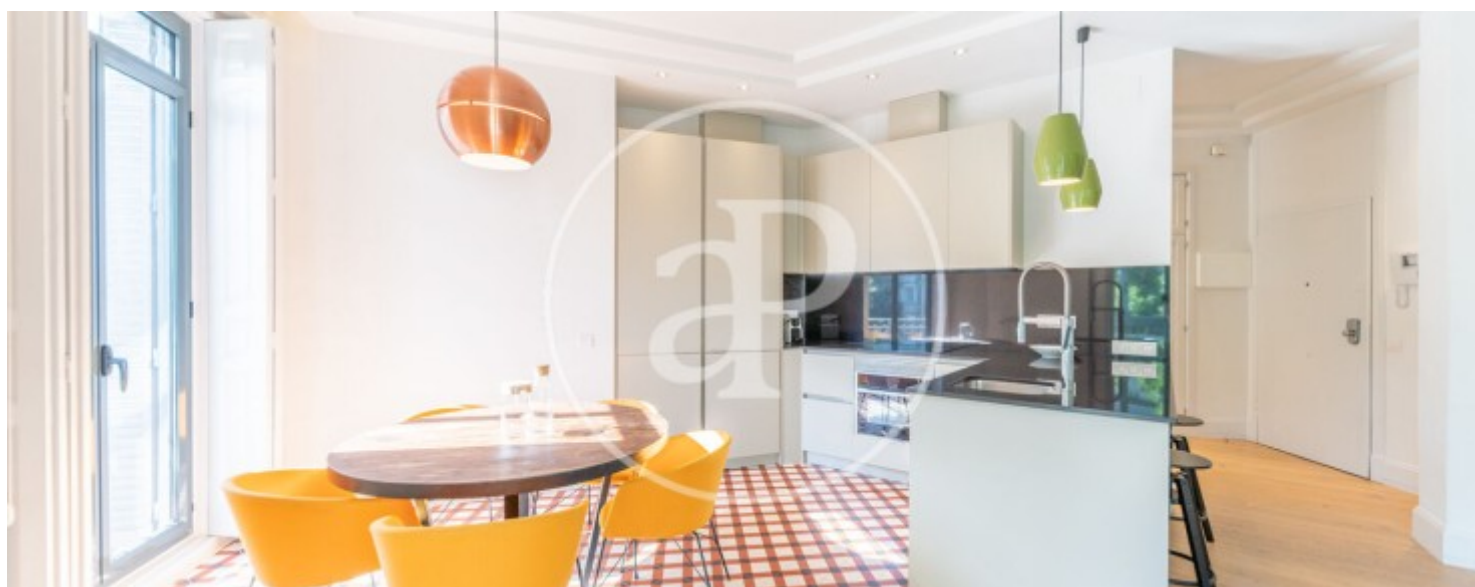
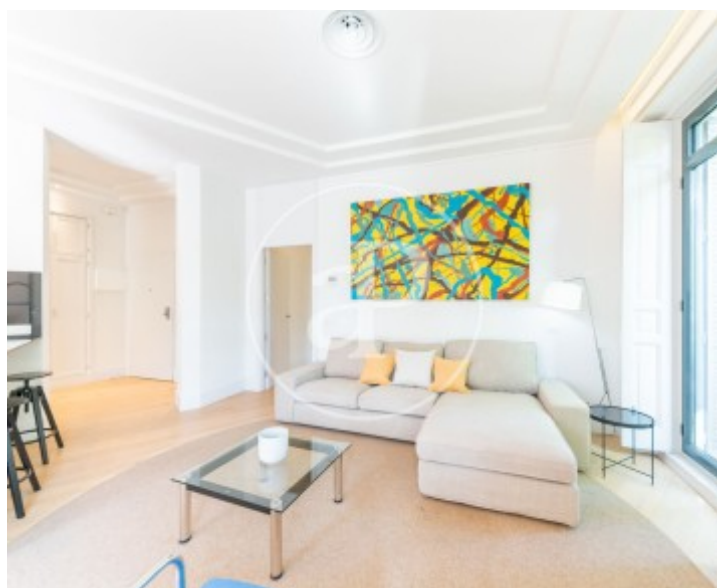
Designed by architect Antonio Farres Aymerich, this building is part of the group of emblematic buildings of early 19th-century Modernist Madrid. The elegant façade reveals lintels, corbels, and wrought-iron railings in the Modernist style, but it is the entrance hall that transports us to the very heart of Parisian Art Nouveau. The vestibule and staircase, adorned with painted plaster plant motifs, create a Modernist atmosphere that surprises with its elegance and beauty. All apartments in the building include television, internet access, individual heating, air conditioning, a fully furnished kitchen with a washing machine, dryer,

refrigerator, oven, microwave, dishwasher, induction hob, two sets of sheets and towels, complete kitchenware, and small appliances (blender, toaster, Nespresso machine, hairdryer, iron, kettle). Electricity, water, and gas services are also included, as well as access to a gym, internet connection, weekly cleaning, and a concierge five days a week. Can you imagine living here?

Contact us,
we will be happy to assist you,
to offer you more details and information.

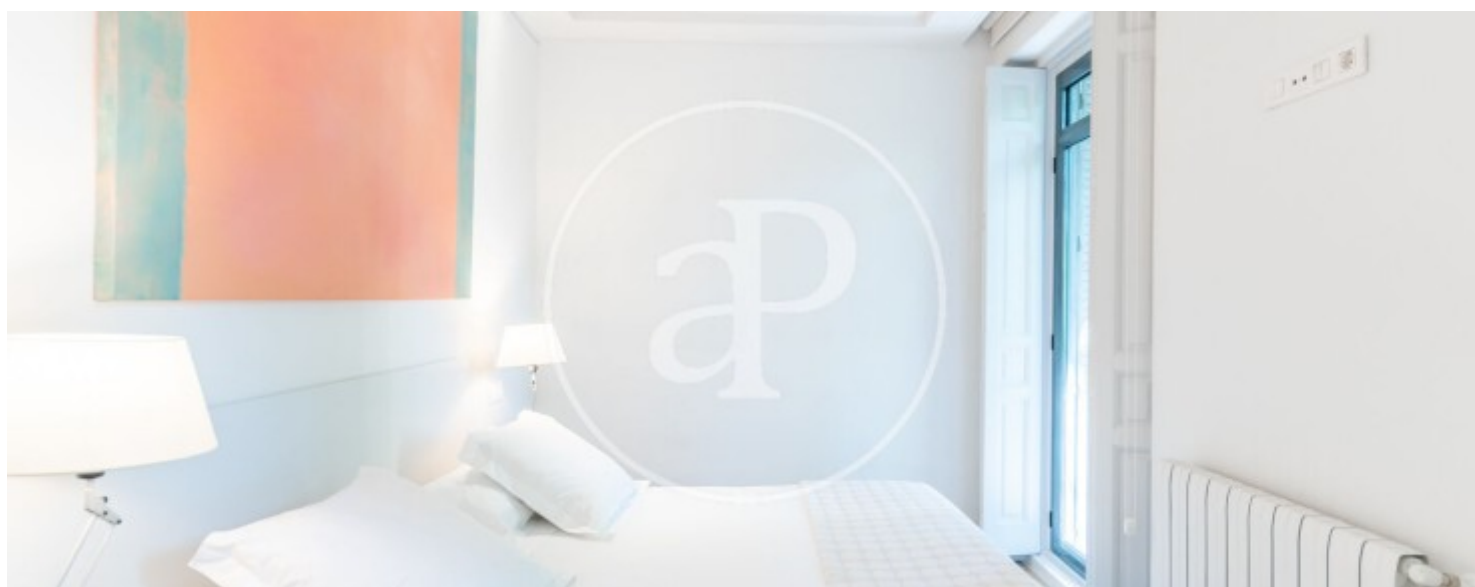
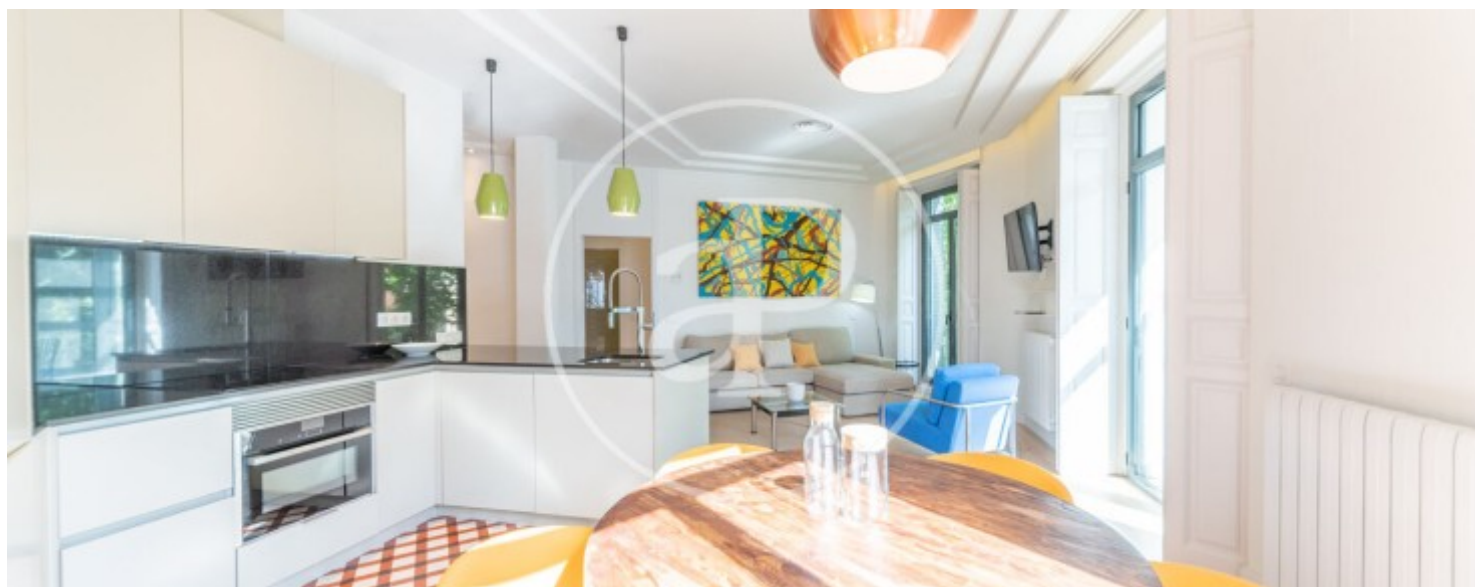
Chueca - Justicia, Madrid

REF. AM2601015



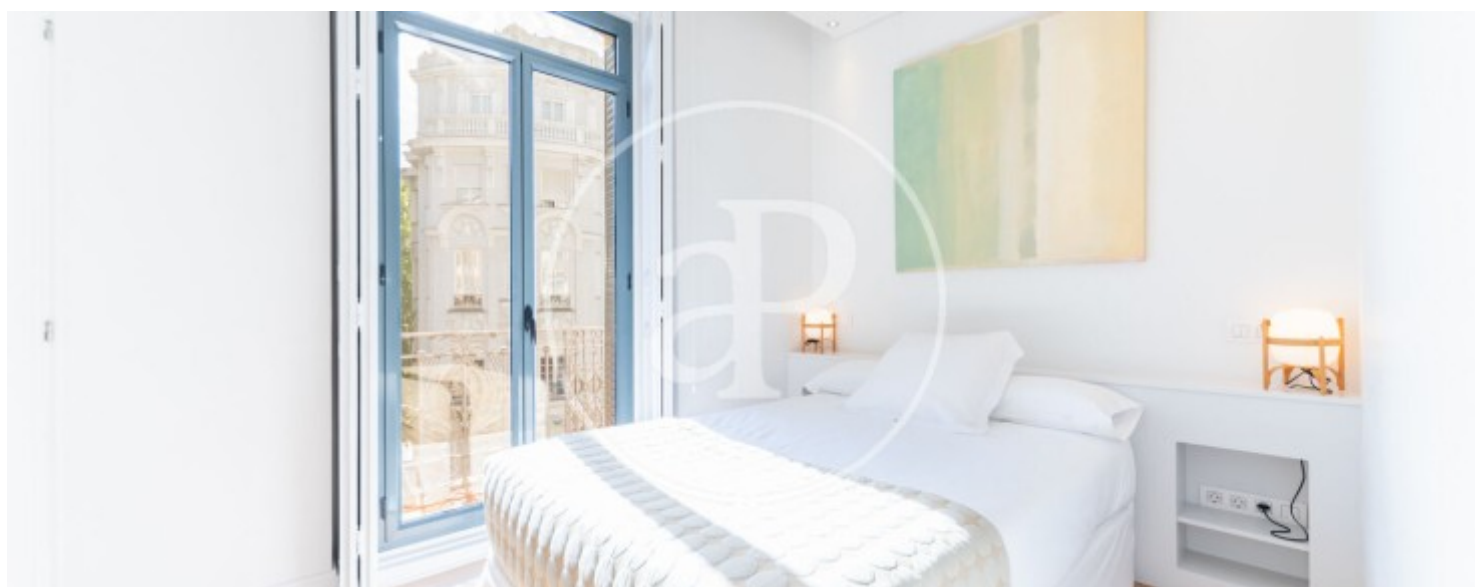
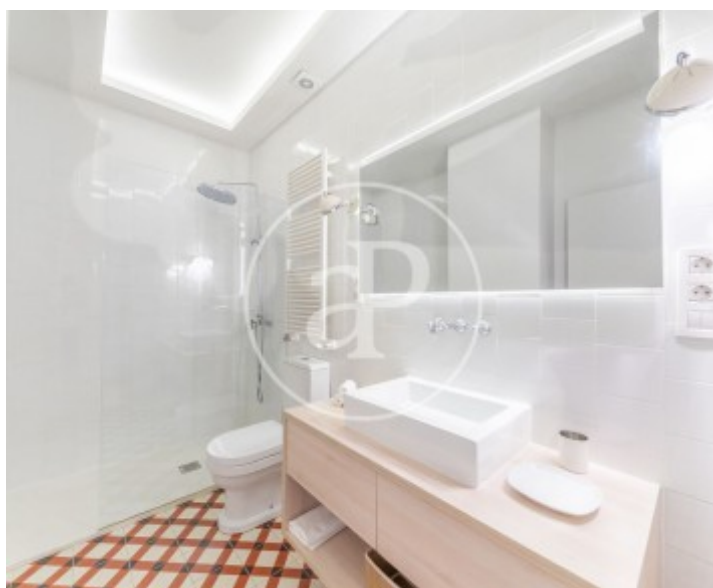
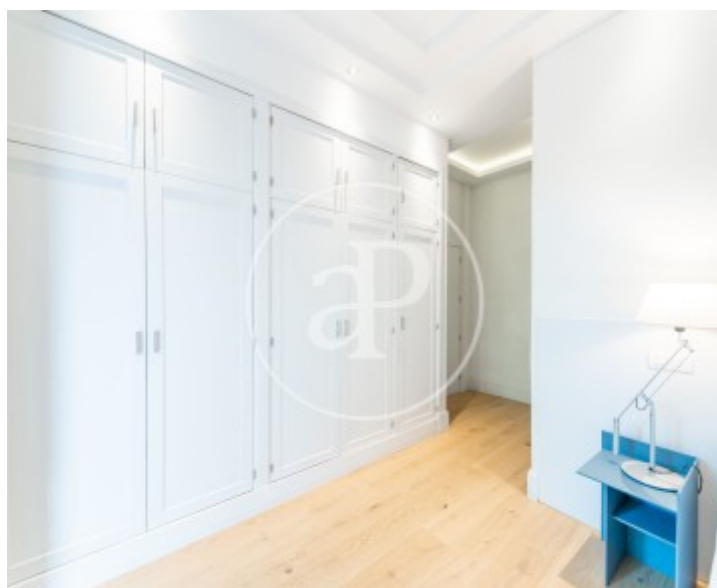
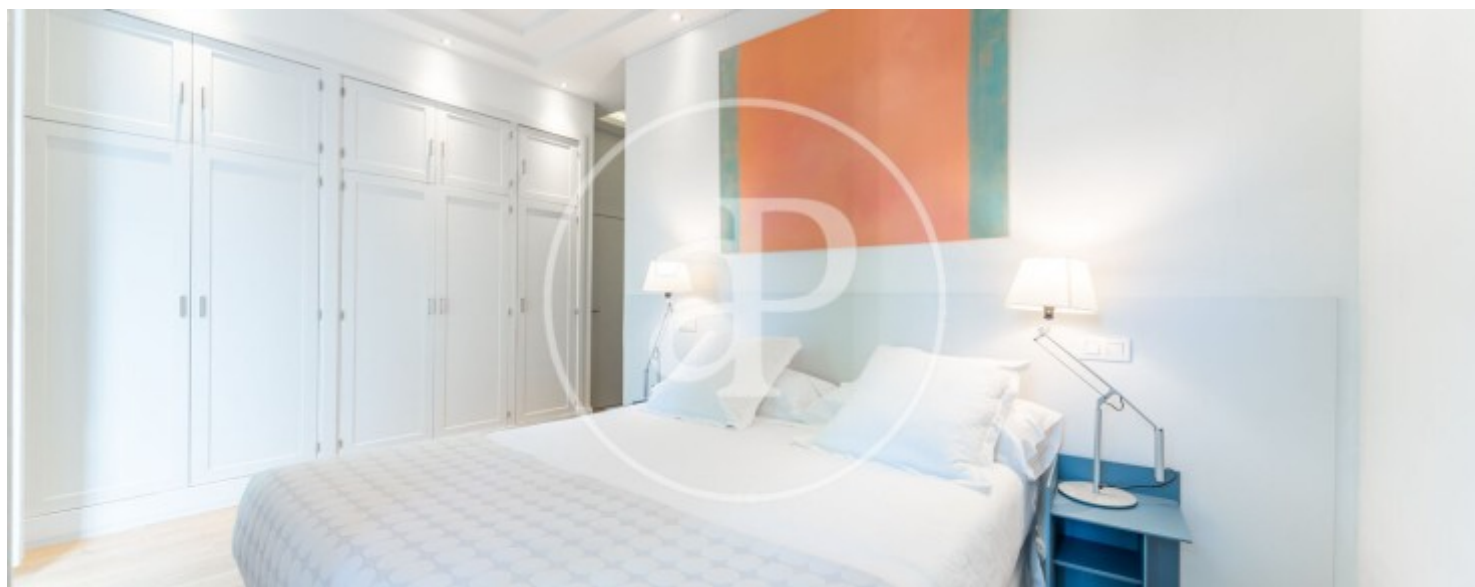
Chueca - Justicia, Madrid

REF. AM2601015



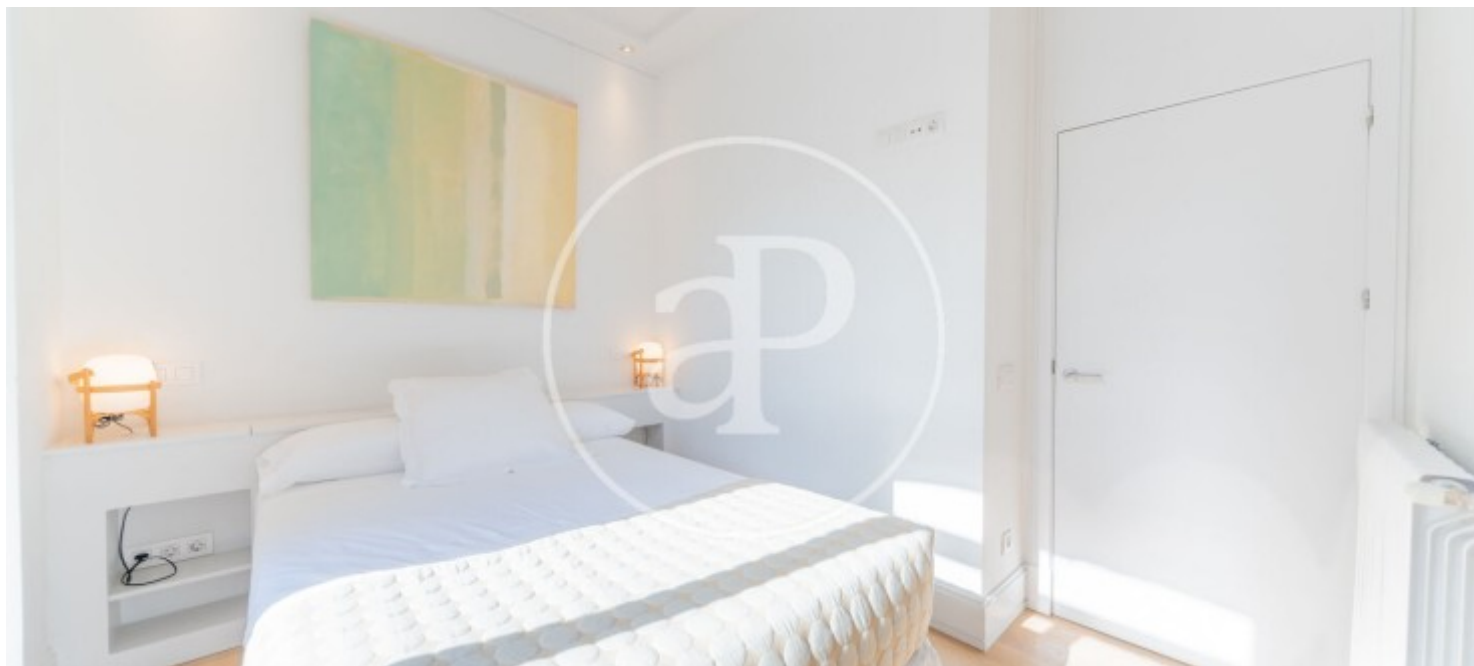
Chueca - Justicia, Madrid

REF. AM2601015



Chueca - Justicia, Madrid

REF. AM2601015



The information about any property is not binding to any offer or contract. Any verbal or written declaration made by aProperties with regards to the value or condition of the property should not be considered accurate or factual. The pictures make reference to some parts of the property at the times that they were taken. The areas, dimensions and distances that are given are approximate and should be checked by the client. The images are computer generated and are just an approximate indication of the real appearance of the property; these may change at any time. The information with regards to the property may also change at any time.

For **more information** or
to make an appointment

apropertiesmadrid@aproperties.es
Tel: 91 800 54 65
www.aproperties.es