

Chueca - Justicia, Madrid

REF. VM2605013

Apartment for Sale in Justicia

Features

- ✓ Views
- ✓ AACC
- ✓ Concierge
- ✓ Heating
- ✓ Lift

Price
4,250,000 €

Surface
302 m²

Bedrooms
4

Bathrooms
5



Impressive exterior property of over 300 m² located in a representative building of great architectural beauty.

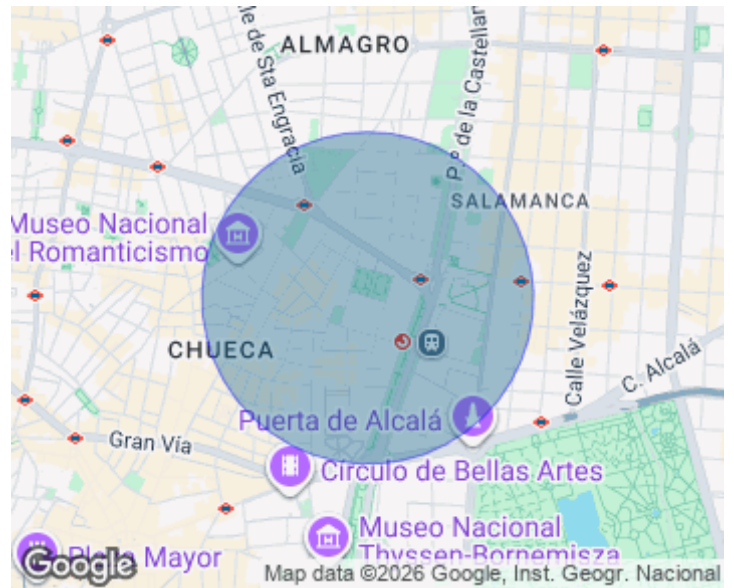
The property stands out for its spaciousness, its ???????? layout, and exceptional brightness that fills each room thanks to its exterior balconies. A large and elegant entrance hall welcomes you, setting the stately tone of the home and harmoniously distributing the different areas. The daytime area offers a spectacular living room with two clearly defined spaces, ideal both for relaxation and social gatherings, as well as a separate dining room that adds an extra touch of distinction. The kitchen, independent and generously sized, includes a practical separ

ate laundry area, providing comfort and functionality for everyday living. The property also features a guest toilet. The night area is clearly separated, offering privacy and comfort. It comprises four spacious bedrooms, all with en-suite bathrooms and excellent natural light, creating warm and inviting spaces. The property is in perfect condition, ready to move into, and stands out for its care and refined taste. At the same time, it offers the possibility of minor updates to adapt it to more contemporary trends according to the future owner's preferences, adding an interesting...

Contact us,
we will be happy to assist you,
to offer you more details and information.

Chueca - Justicia, Madrid

REF. VM2605013



Chueca - Justicia, Madrid

REF. VM2605013



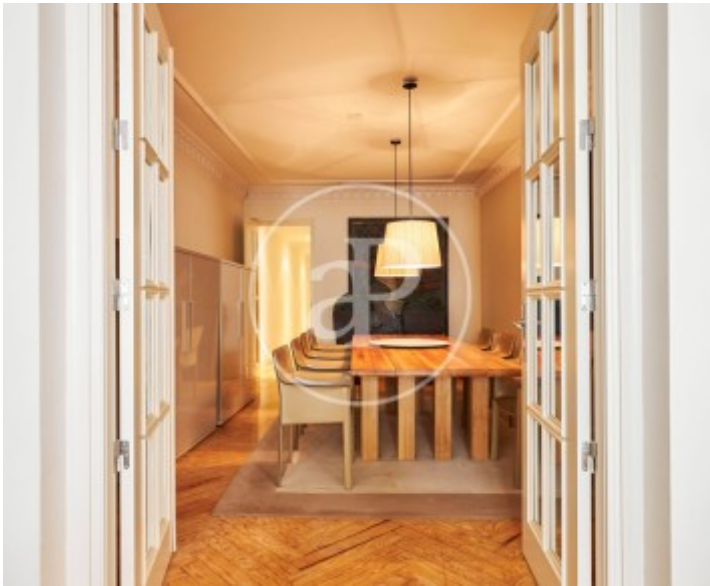
Chueca - Justicia, Madrid

REF. VM2605013



Chueca - Justicia, Madrid

REF. VM2605013



The information about any property is not binding to any offer or contract. Any verbal or written declaration made by aProperties with regards to the value or condition of the property should not be considered accurate or factual. The pictures make reference to some parts of the property at the times that they were taken. The areas, dimensions and distances that are given are approximate and should be checked by the client. The images are computer generated and are just an approximate indication of the real appearance of the property; these may change at any time. The information with regards to the property may also change at any time.

For **more information** or
to make an appointment

apropertiesmadrid@aproperties.es
Tel: 91 800 54 65
www.aproperties.es