

Chueca - Justicia, Madrid

REF. VM2512051

# Flat for sale in Justicia

## Features

- ✓ Views
- ✓ Heating
- ✓ Lift

Price  
**1,650,000 €**

Surface  
**178 m<sup>2</sup>**

Bedrooms  
**3**

Bathrooms  
**2**



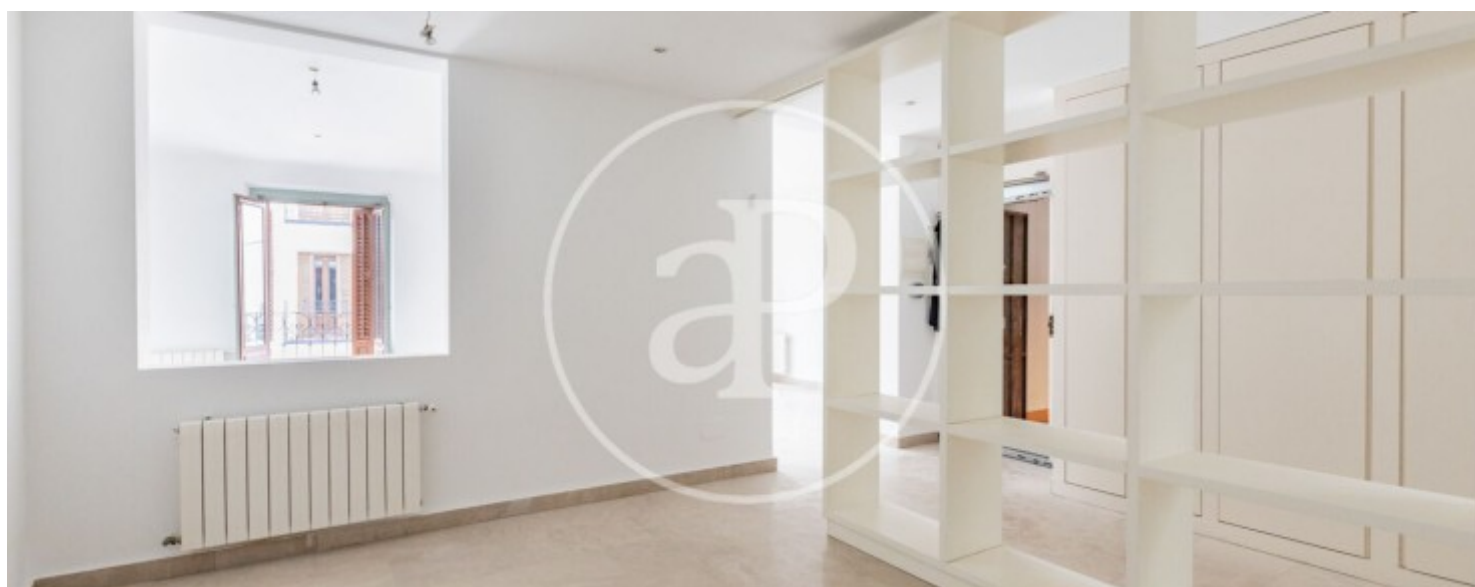
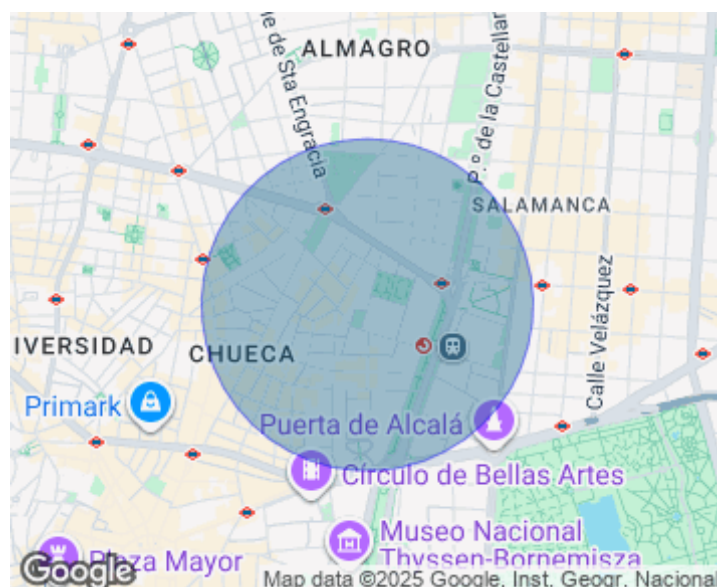
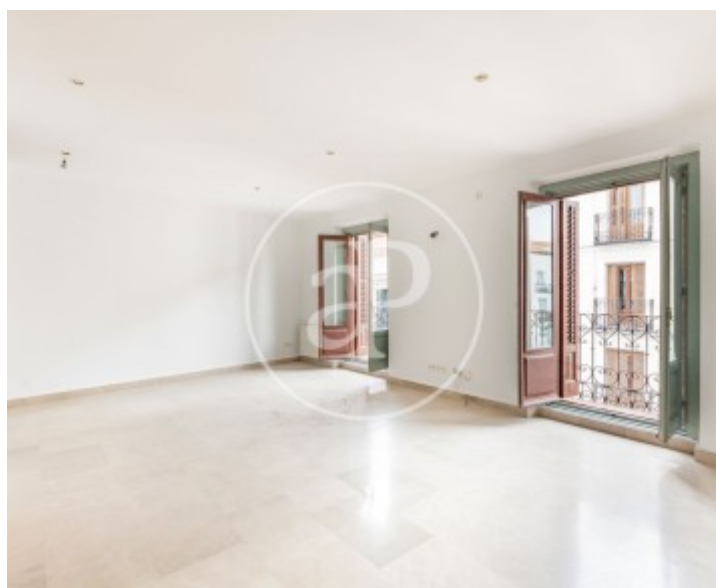
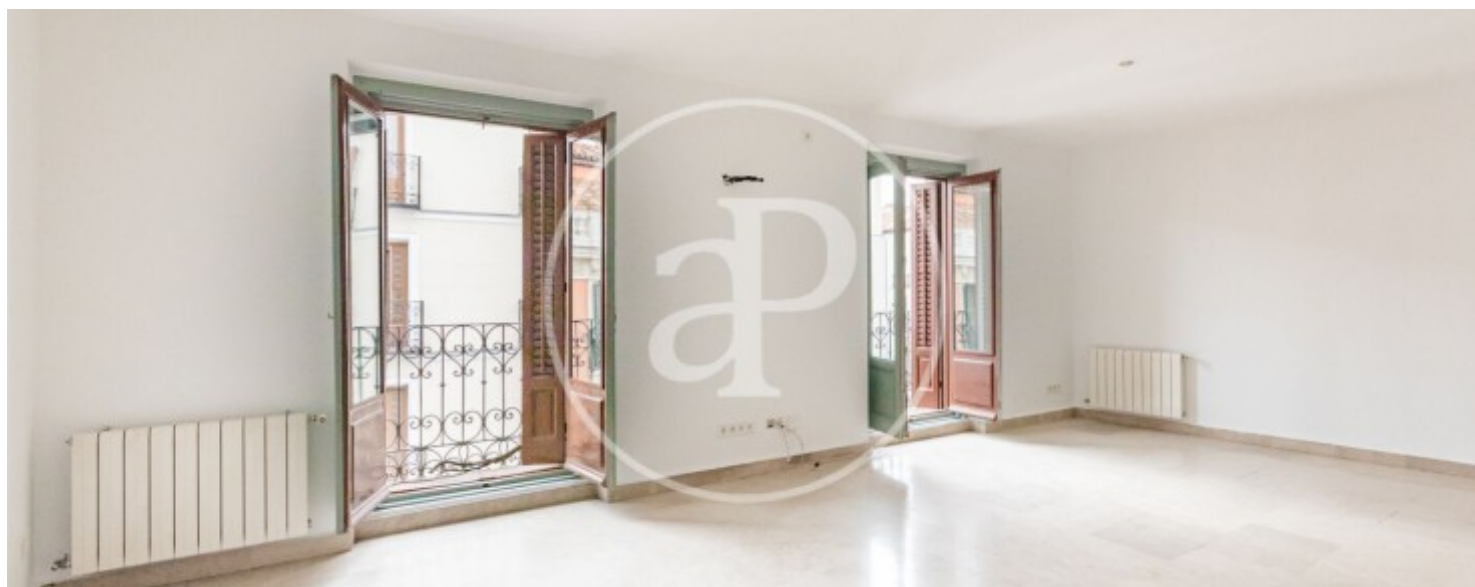
Exclusive exterior house on the top floor of a representative property with beautiful classical facade, good portal and beautiful common areas, located in a privileged location of justice, surrounded by restaurants, shops, and all services. The house is characterized by its extraordinary luminosity, its magnificent balconies to the street and its excellent distribution that facilitates the multiple possibilities of reform with spacious and bright spaces. Currently you access the house through a beautiful hall that gives way to the reception area, a spacious living room flanked by large balconies from which you can enjoy beautiful views of classic buildings and the sky of Madrid, a dining area and separate kitchen. The rest area consists of three large bedrooms, one with en suite bathroom and

large fitted wardrobes and two dressing rooms. The house has another bathroom. Can you imagine living here?

**Contact us,**  
we will be happy to assist you,  
to offer you more details and information.

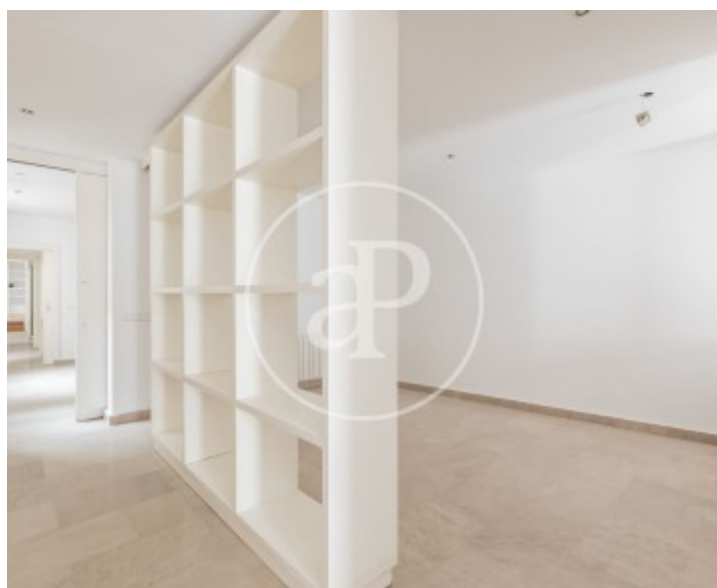
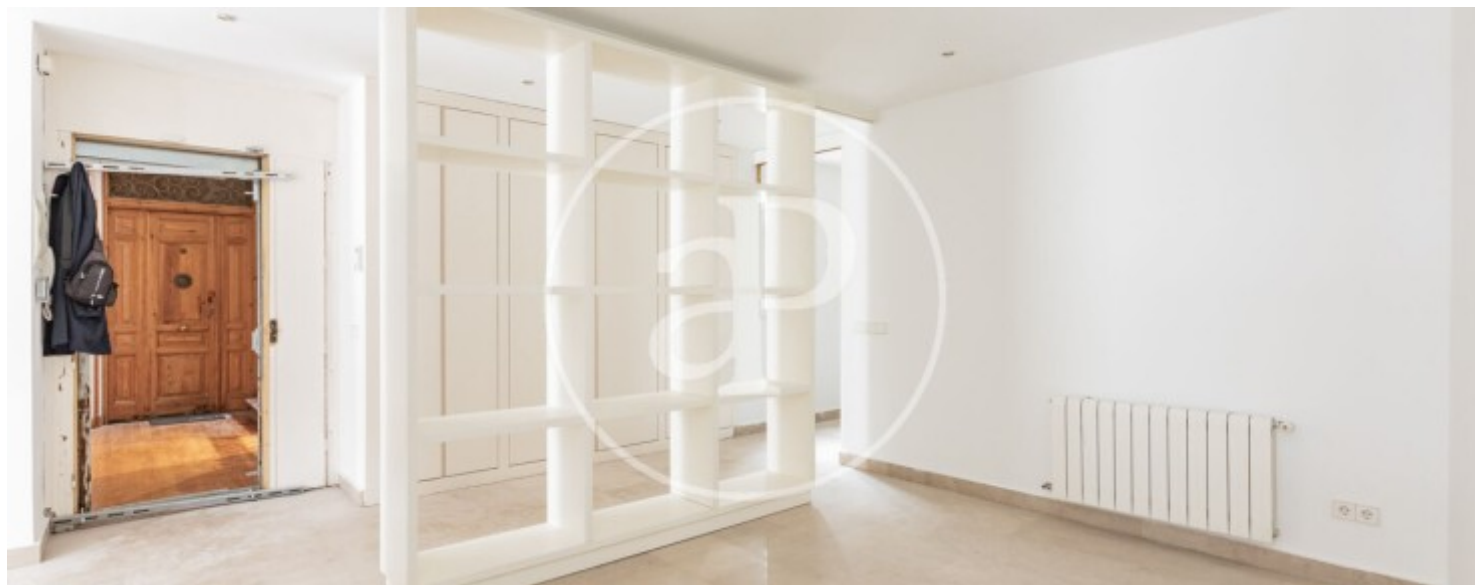
Chueca - Justicia, Madrid

REF. VM2512051



Chueca - Justicia, Madrid

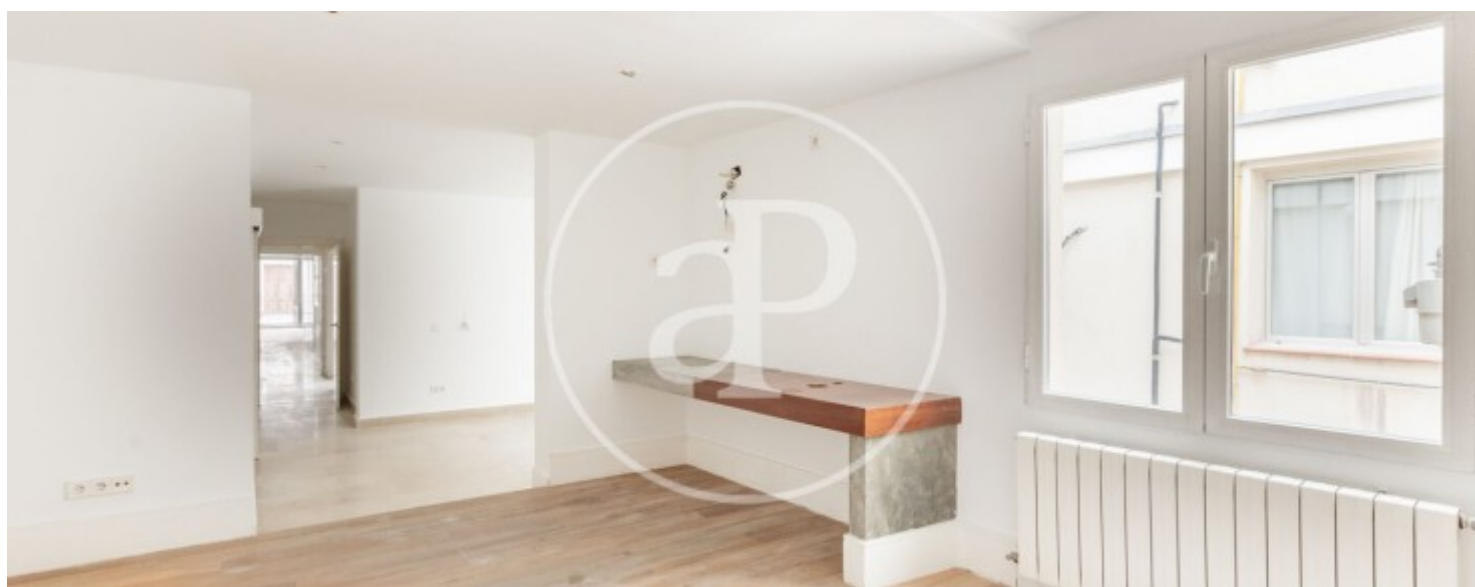
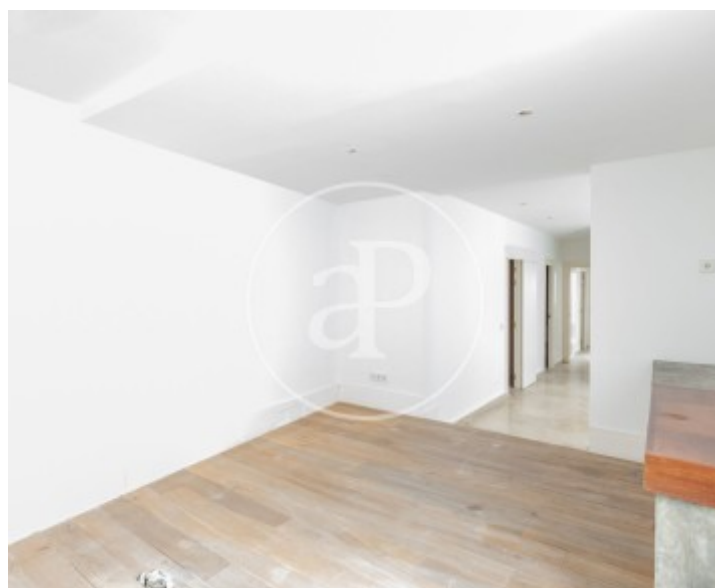
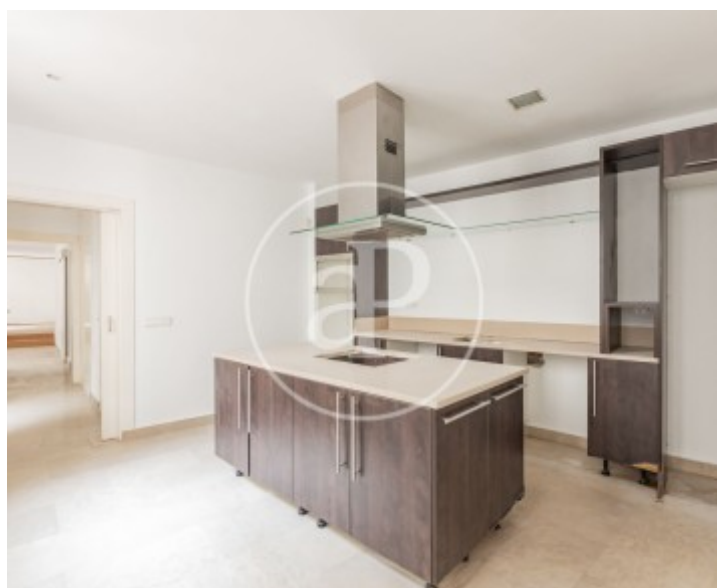
REF. VM2512051





Chueca - Justicia, Madrid

REF. VM2512051



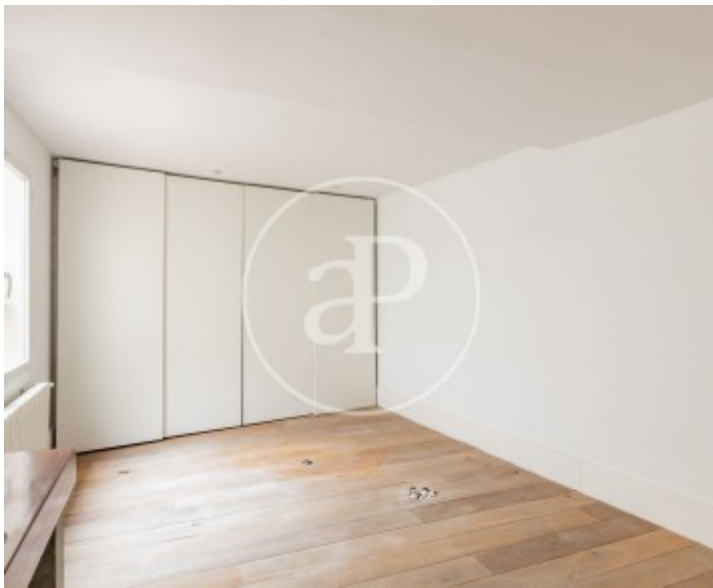


**APROPERTIES**  
REAL ESTATE

Calle Serrano 60  
28001 Madrid  
T. 91 800 54 65  
[www.aproperties.es](http://www.aproperties.es)

Chueca - Justicia, Madrid

REF. VM2512051



The information about any property is not binding to any offer or contract. Any verbal or written declaration made by aProperties with regards to the value or condition of the property should not be considered accurate or factual. The pictures make reference to some parts of the property at the times that they were taken. The areas, dimensions and distances that are given are approximate and should be checked by the client. The images are computer generated and are just an approximate indication of the real appearance of the property; these may change at any time. The information with regards to the property may also change at any time.

For **more information** or  
to make an appointment

[apropertiesmadrid@aproperties.es](mailto:apropertiesmadrid@aproperties.es)  
Tel: 91 800 54 65  
[www.aproperties.es](http://www.aproperties.es)