



Chueca - Justicia, Madrid

REF. AM2512011

# Penthouse for rent in Chueca - Justicia (Madrid)

## Features

- ✓ Views
- ✓ Furnished
- ✓ Lift

Surface

129 m<sup>2</sup>

Bedrooms

2

Bathroom

1

Price

2,200 €



## Apartment available for long-term lease.

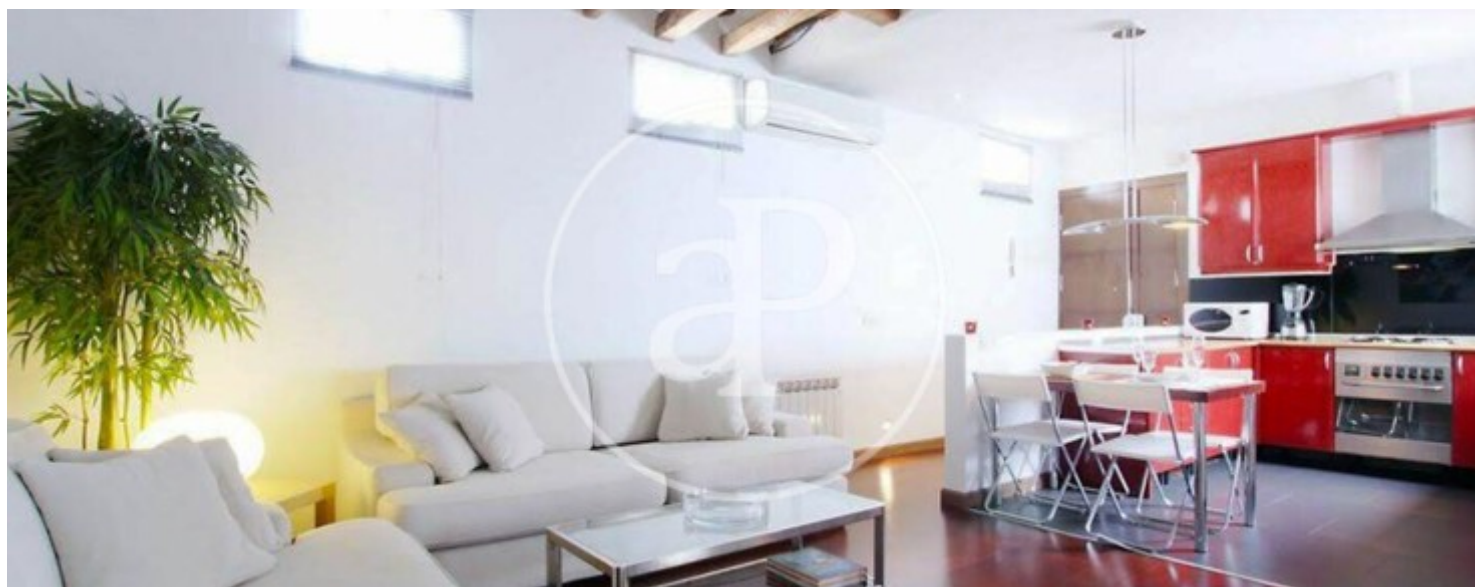
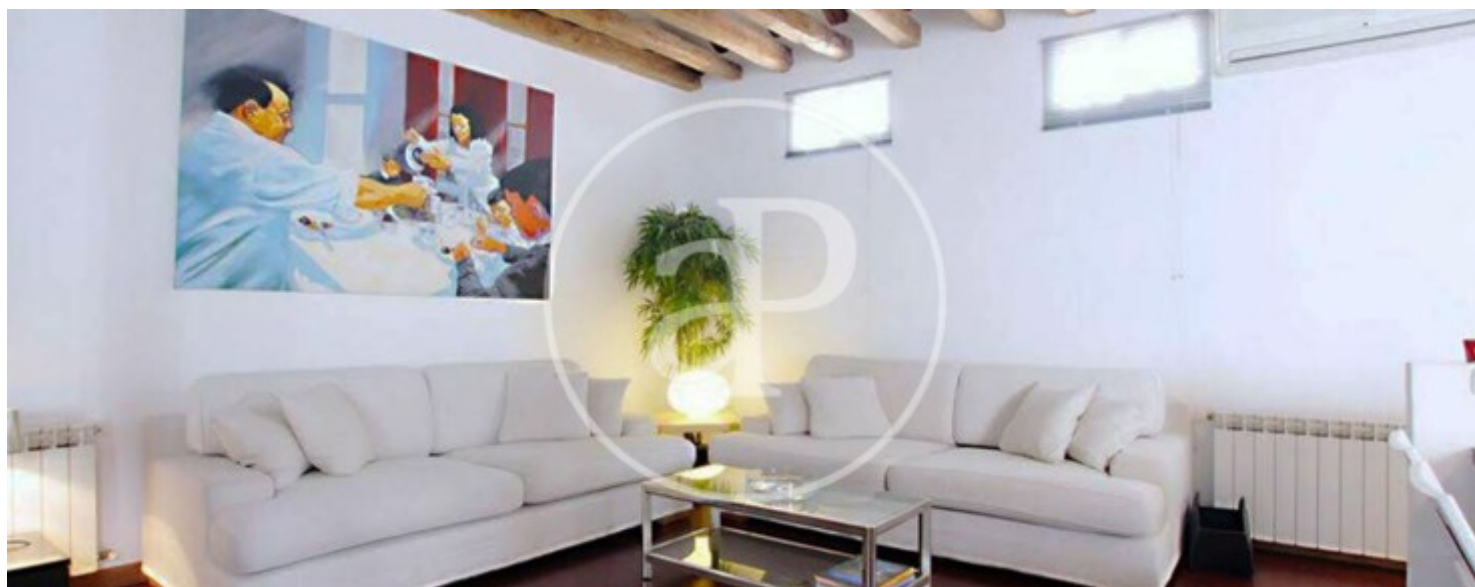
aProperties presents this charming 120 m<sup>2</sup> apartment, located on the well-known Calle Pelayo, one of Madrid's most vibrant and charming neighborhoods. Despite its central location, the apartment is exceptionally quiet, as it is on the fourth floor (no elevator) and the highest floor in the building. Key Features 120 m<sup>2</sup> of living space 4th floor (no elevator) Historic building from 1910 2 spacious bedrooms 1 full bathroom Bright interior Furnished as seen in the photos Air conditioning Quiet and peaceful Long-term lease Although an interior apartment, it boasts abundant natural light thanks to its height and

the absence of nearby buildings that might block it. The layout is comfortable and inviting, with spacious rooms and a unique character typical of the Justicia-Chueca neighborhood. It is delivered fully furnished and ready to move in. Location Situated on Calle Pelayo, one of the most sought-after streets for its vibrant atmosphere, shops, restaurants, and excellent transport links. Enjoy a lively lifestyle without sacrificing tranquility thanks to the apartment's elevated position. Can you imagine living here?

**Contact us,**  
we will be happy to assist you,  
to offer you more details and information.

Chueca - Justicia, Madrid

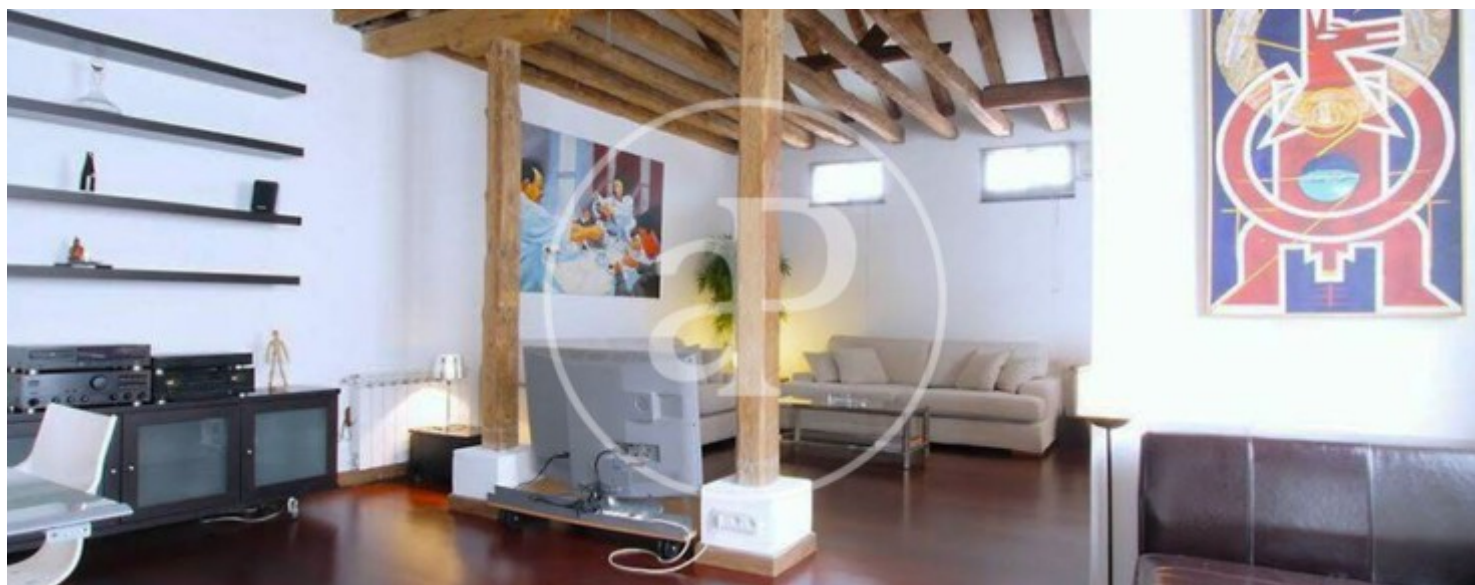
REF. AM2512011





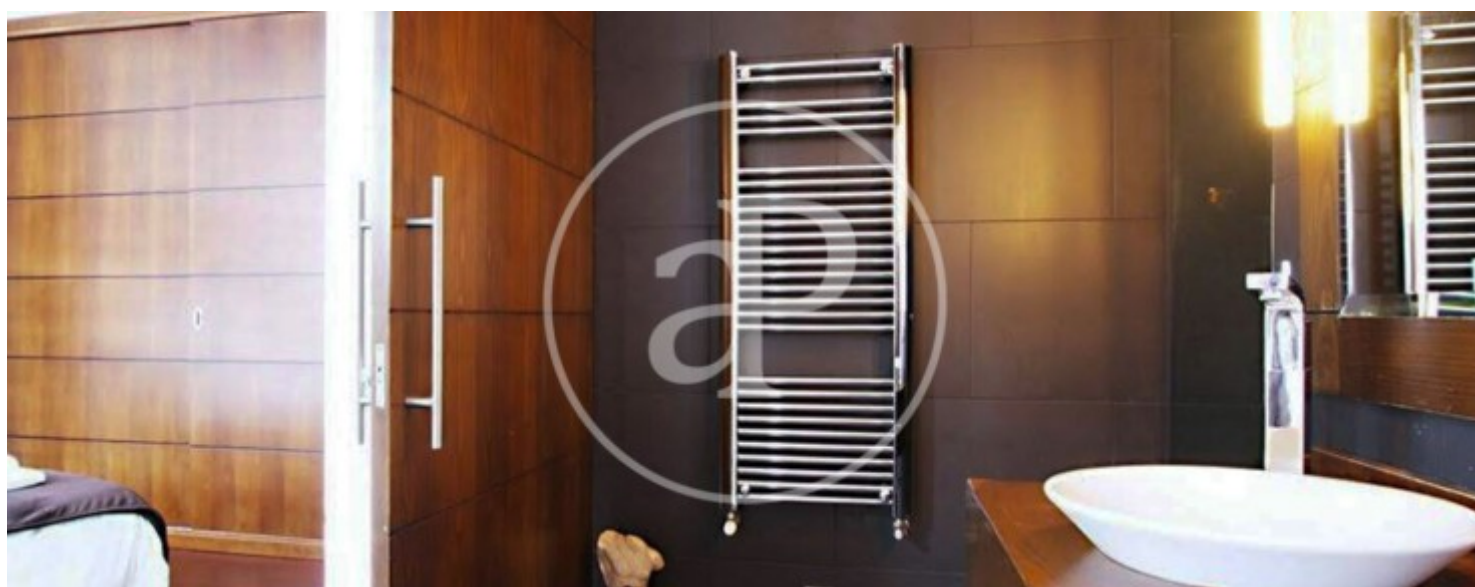
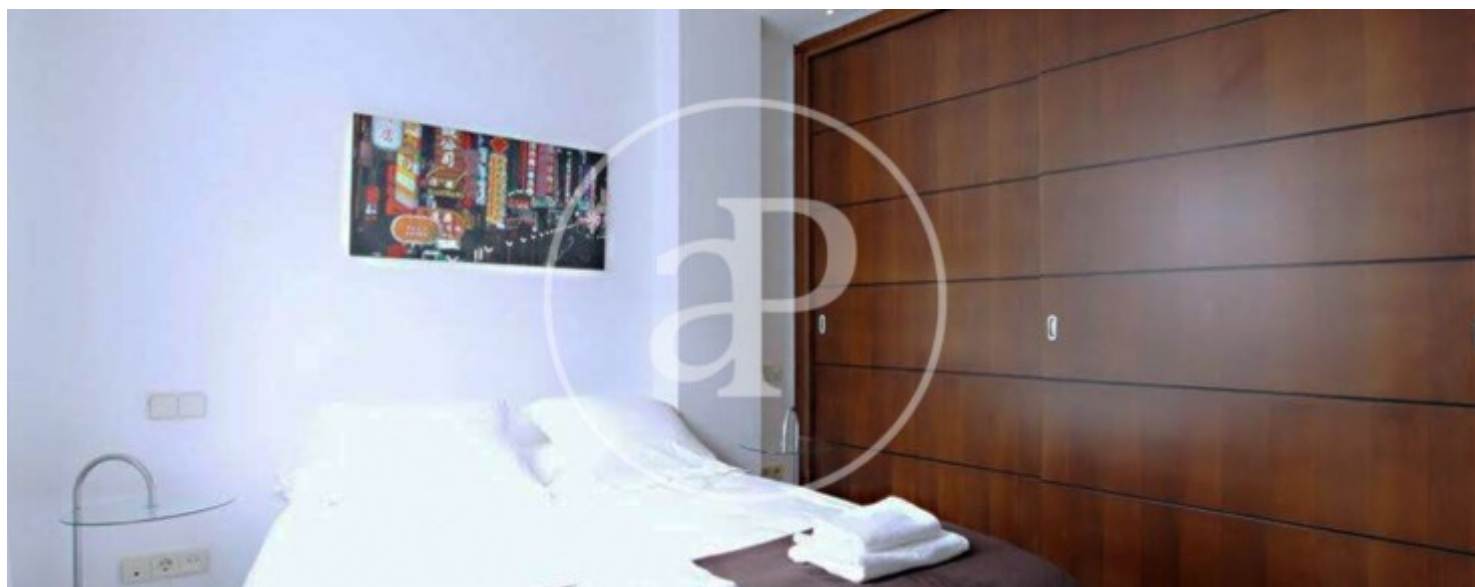
Chueca - Justicia, Madrid

REF. AM2512011



Chueca - Justicia, Madrid

REF. AM2512011





Chueca - Justicia, Madrid

REF. AM2512011



The information about any property is not binding to any offer or contract. Any verbal or written declaration made by aProperties with regards to the value or condition of the property should not be considered accurate or factual. The pictures make reference to some parts of the property at the times that they were taken. The areas, dimensions and distances that are given are approximate and should be checked by the client. The images are computer generated and are just an approximate indication of the real appearance of the property; these may change at any time. The information with regards to the property may also change at any time.

For **more information** or  
to make an appointment

[apropertiesmadrid@aproperties.es](mailto:apropertiesmadrid@aproperties.es)  
Tel: 91 800 54 65  
[www.aproperties.es](http://www.aproperties.es)