

(Castilla)

Ref: ONM2211005



Penthouse for sale in Chamartín.

FOUR BEDROOM PENTHOUSE IN LUXURY URBANIZATION.

Calanda Homes has the marked personality that confers its modern entrance, the delicate treatment of the facades in which attractive materials are integrated with the undoubted prominence of stone and glass, the careful design of the common areas, the sports and social facilities, the landscaped areas, the facilities designed for children, and the wide range of spacious and bright homes with landscaped areas in the case of the first floors, or with large terraces in the remaining homes, all designed under the rigorous quality standards that Pryconsa prints in its projects. We want the experience of living in Calanda Homes to be a real highlight for you and your family, so we have designed the common areas of the development thinking of all its members and the different experiences to share. Starting with the portals with a noble and modern treatment both on the first floor and in the basement. The urbanization will offer in all its phases meeting and relaxation areas such as the spacious gardens, promenades, or the cozy Espacio Calanda, sports and leisure facilities such as the gym, the paddle court, the Munich type swimming pool fo [...]

Madrid / Castilla

Unit 5 1

Completion Q1 2023

FEATURES

Surface 195 m² / 155 m² terrace

4 Rooms

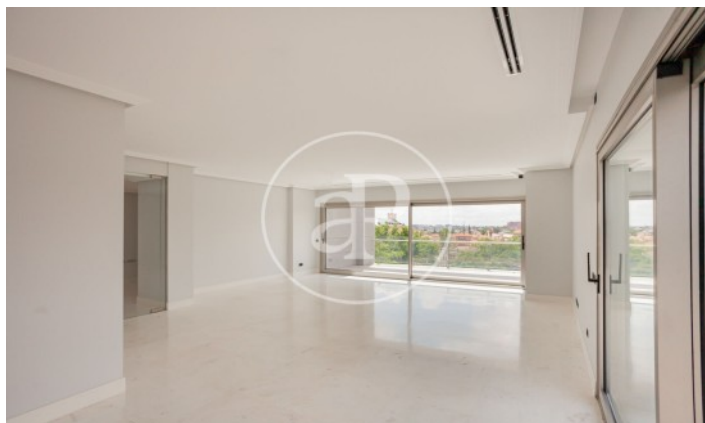
3 Toilets

- | | |
|------------|---------------|
| ✓ Views | ✓ Gym |
| ✓ Heating | ✓ Lift |
| ✓ Boxroom | ✓ Security |
| ✓ AACC | ✓ Concierge |
| ✓ Terrace | ✓ Has parking |
| ✓ Backyard | |
| ✓ Pool | |

Price 2,515,000 €

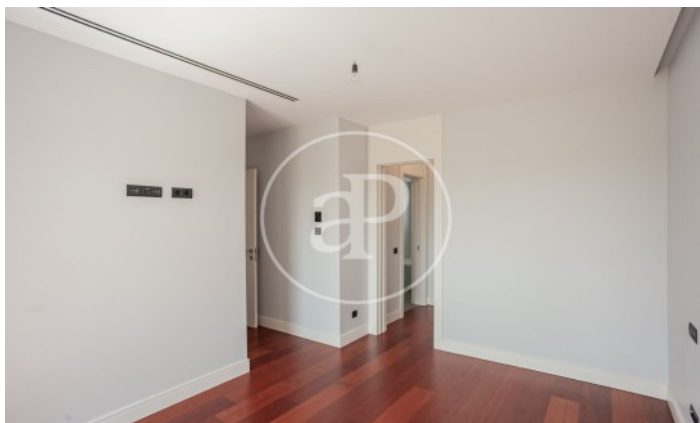
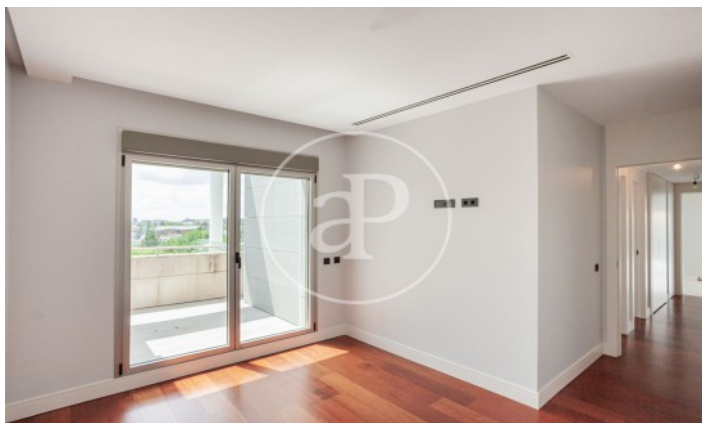
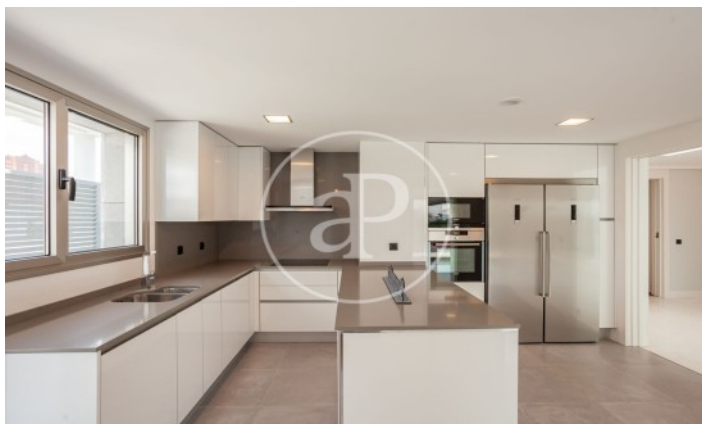
(Castilla)

Ref: ONM2211005



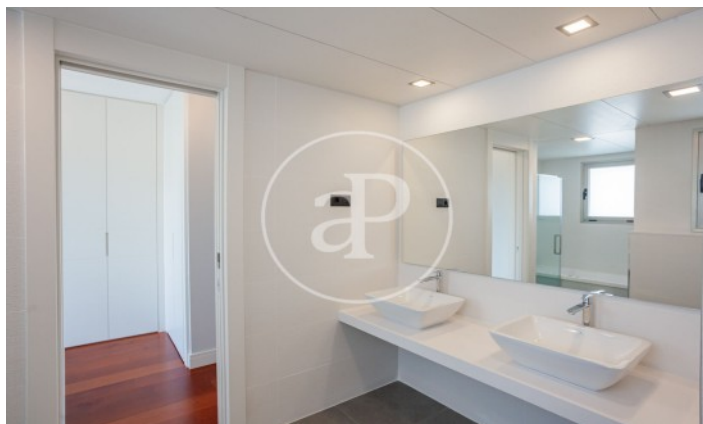
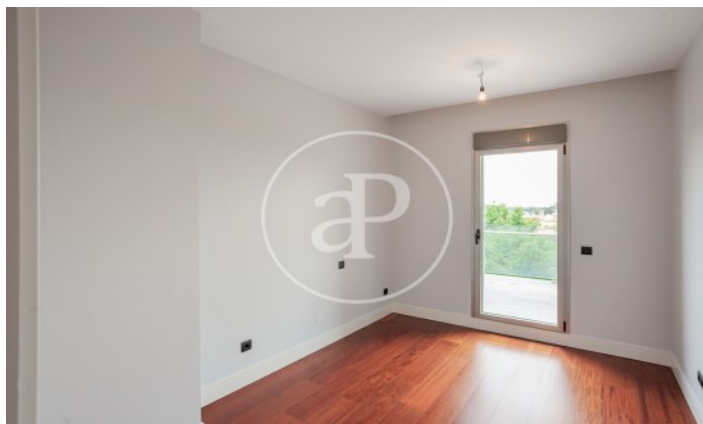
(Castilla)

Ref: ONM2211005



(Castilla)

Ref: ONM2211005



The information about any property is not binding to any offer or contract. Any verbal or written declaration made by aProperties with regards to the value or condition of the property should not be considered accurate or factual. The pictures make reference to some parts of the property at the times that they were taken. The areas, dimensions and distances that are given are approximate and should be checked by the client. The images are computer generated and are just an approximate indication of the real appearance of the property; these may change at any time. The information with regards to the property may also change at any time.

Contact us today for more information or to arrange a viewing

Tel: 91 800 54 65

apropertiesmadrid@aproperties.es

<https://www.aproperties.es>