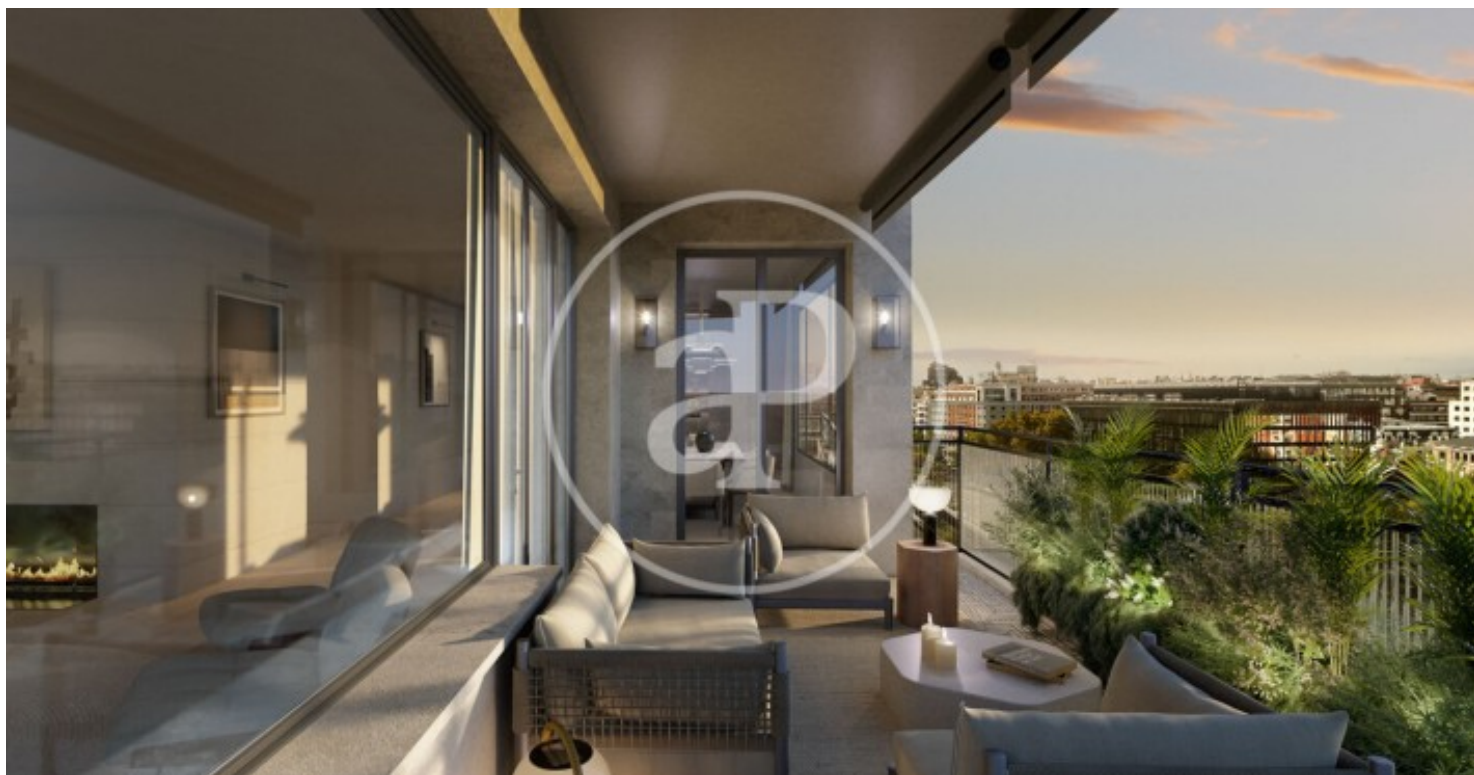


(Castellana)

Ref: ONM2411003



New construction on Paseo de la Castellana *aProperties Real Estate*

APROPERTIES REAL ESTATE invites you to discover this exclusive project in full on our website www.aproperties.es. This is an emblematic 27-unit building located in the heart of Madrid, between the two most exclusive neighborhoods, SALAMANCA and EL VISO. A unique opportunity to experience a space that fuses historic architecture with contemporary design, offering exclusivity, well-being, and stunning views in the heart of Madrid. VARIOUS TYPES OF 2, 3, and 4-bedroom homes are available, allowing you to enjoy luxury as a unique and special lifestyle. This is a very exclusive concept with open and warm interiors that aim to achieve comfort and quality of life. We offer the possibility of CUSTOMIZING the homes in terms of interior layout and luxury finishes, accompanied by the GUNNI & TRENTINO brand, allowing you to define your interior design with the support of our technical team. This wonderful project is more than just housing; it's designed to adapt to the lifestyle of its residents. The common areas feature a large entrance lobby with a reception desk with access control, a spa center with a sauna, massage room, and changing rooms, designed for the relaxation and [...]

Madrid / Castellana

Unit 3 A

Completion Q1 2026

FEATURES

Surface 321 m² / 28 m² terrace

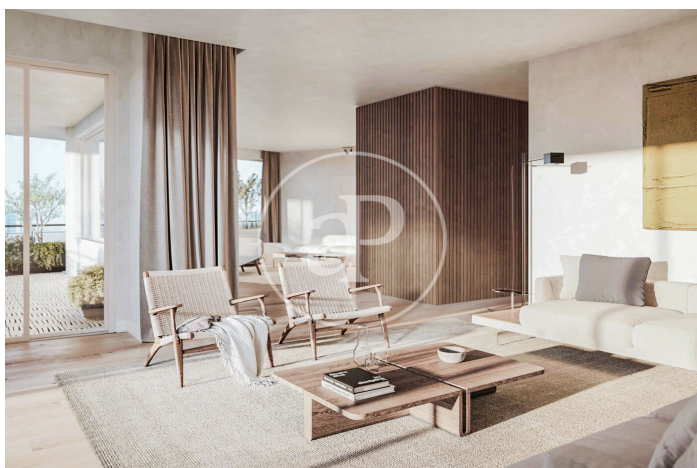
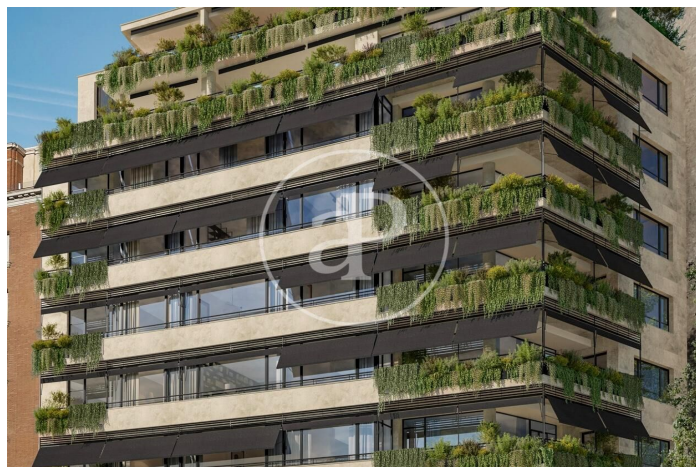
3 Rooms

3 Toilets 1 Restrooms

- ✓ Views
- ✓ Heating
- ✓ Boxroom
- ✓ AACC
- ✓ Terrace
- ✓ Gym
- ✓ Lift
- ✓ Security
- ✓ Concierge
- ✓ Has parking

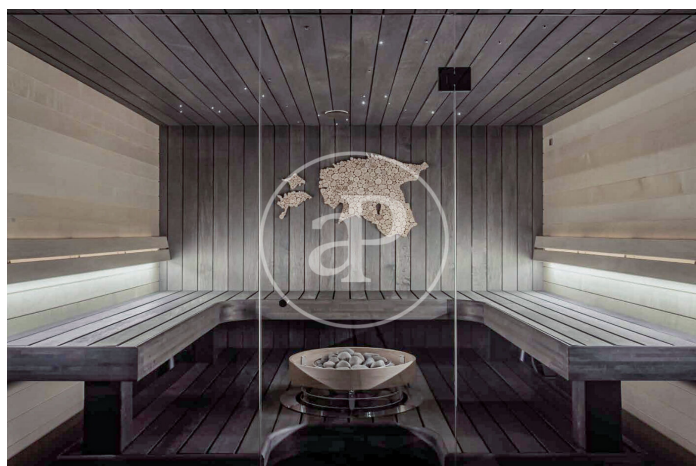
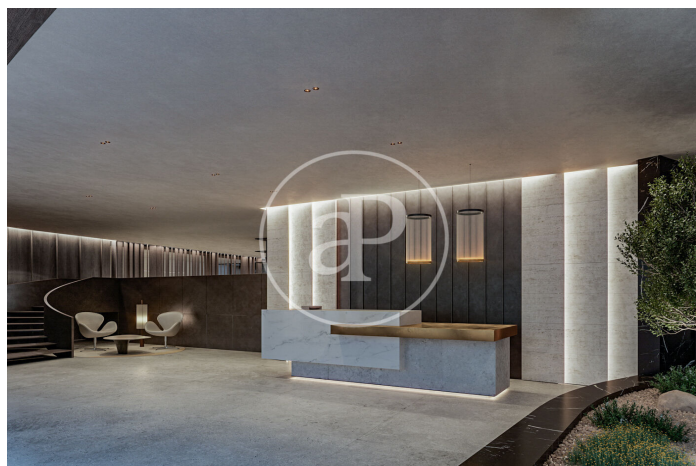
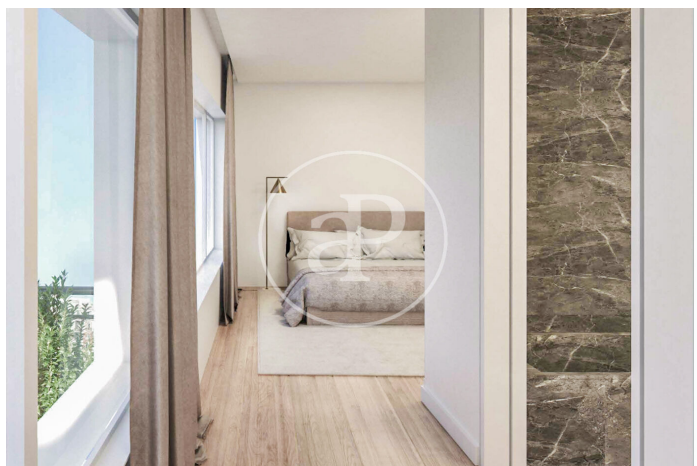
(Castellana)

Ref: ONM2411003



(Castellana)

Ref: ONM2411003



(Castellana)

Ref: ONM2411003



The information about any property is not binding to any offer or contract. Any verbal or written declaration made by aProperties with regards to the value or condition of the property should not be considered accurate or factual. The pictures make reference to some parts of the property at the times that they were taken. The areas, dimensions and distances that are given are approximate and should be checked by the client. The images are computer generated and are just an approximate indication of the real appearance of the property; these may change at any time. The information with regards to the property may also change at any time.

Contact us today for more information or to arrange a viewing

Tel: 91 800 54 65 apropertiesmadrid@aproperties.es <https://www.aproperties.es>