

Castellana, Madrid

REF. VM2312021



Flat for sale in calle Padilla.

Features

- ✓ Views
- ✓ Heating
- ✓ Furnished
- ✓ Boxroom
- ✓ AACC
- ✓ Lift
- ✓ Concierge

Price

3,990,000 €

Surface

271 m²

Bedrooms

4

Bathrooms

5



In the heart of the Salamanca neighbourhood, in calle Padilla, in one of the best areas of Madrid, close to the prestigious Juan March Foundation and the Belgian embassy, we find this wonderful property in an advanced process of integral reform with an expected delivery date in a couple of months. The refurbishment has been carried out with the utmost care and attention to detail. The property, located on a fifth floor exterior with five openings to the street, has a reception area, consisting of a living-dining room of approximately 80 m² with three different atmospheres, a fully equipped designer kitchen semi-integrated and a separate laundry area. It also has a rest area comprising three large en-suite bedrooms with en-suite bathrooms and a fourth service bedroom with its own bathroom. The

entire property has a storage room and the air conditioning is ducted in all the rooms with independent controls. The property has a representative doorway with porter service, and its location has all kinds of shops, restaurants and means of transport, which undoubtedly increases its value. Can you imagine living here?

Contact us,
we will be happy to assist you,
to offer you more details and information.

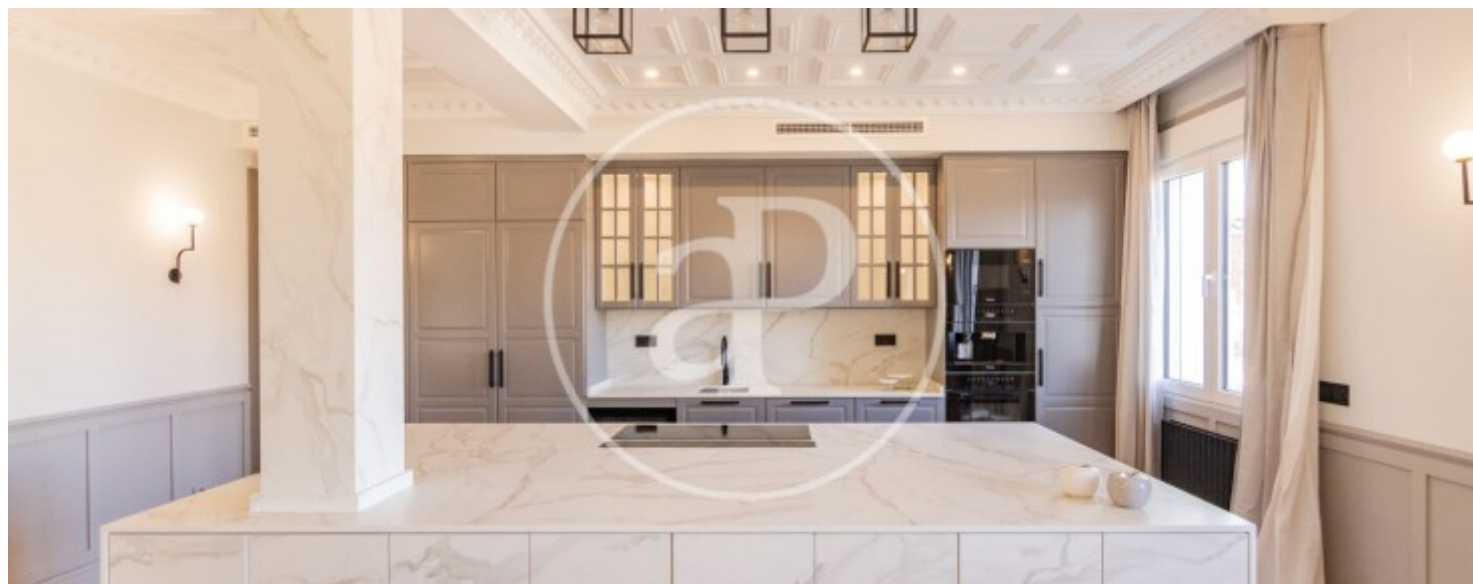
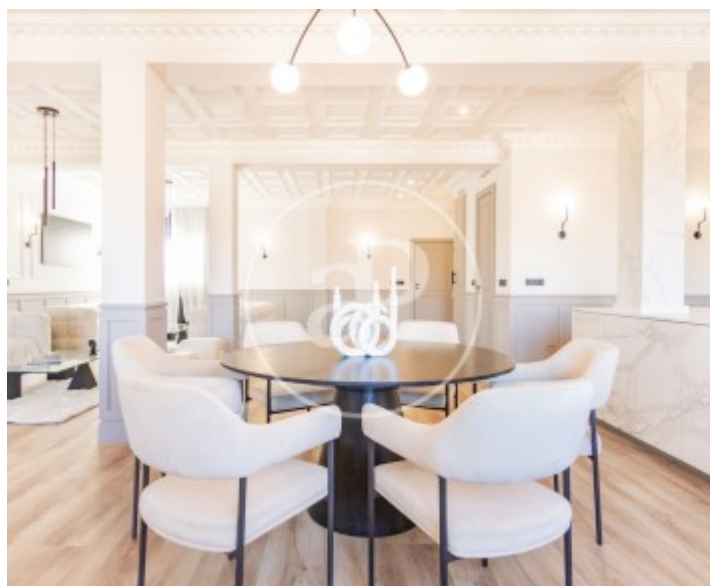
Castellana, Madrid

REF. VM2312021



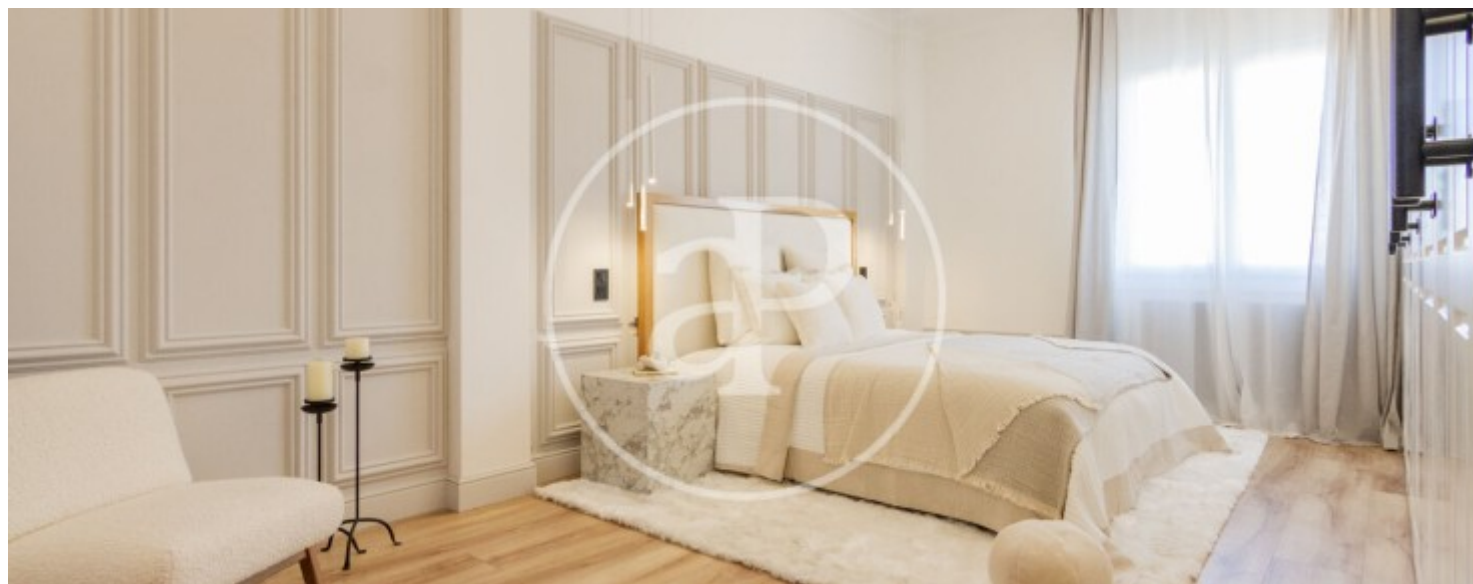
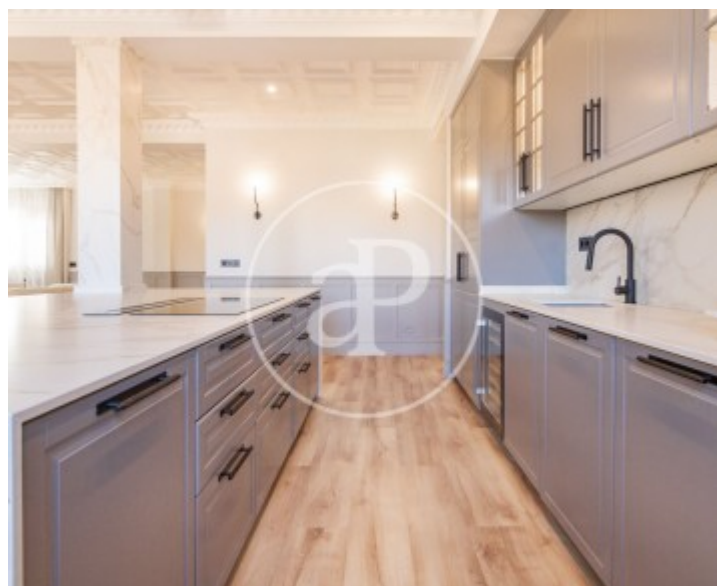
Castellana, Madrid

REF. VM2312021



Castellana, Madrid

REF. VM2312021



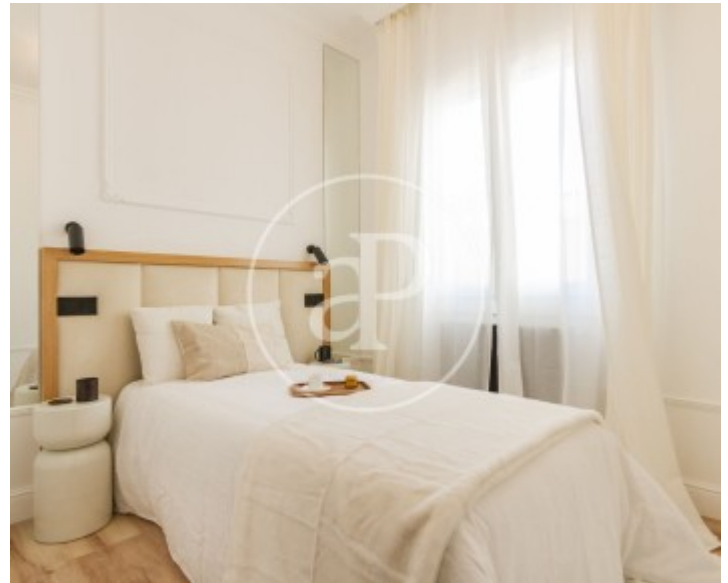


APROPERTIES
REAL ESTATE

Calle Serrano 60
28001 Madrid
T. 91 800 54 65
www.aproperties.es

Castellana, Madrid

REF. VM2312021



The information about any property is not binding to any offer or contract. Any verbal or written declaration made by aProperties with regards to the value or condition of the property should not be considered accurate or factual. The pictures make reference to some parts of the property at the times that they were taken. The areas, dimensions and distances that are given are approximate and should be checked by the client. The images are computer generated and are just an approximate indication of the real appearance of the property; these may change at any time. The information with regards to the property may also change at any time.



For **more information** or
to make an appointment

apropertiesmadrid@aproperties.es
Tel: 91 800 54 65
www.aproperties.es