



Castellana, Madrid

REF. AM2406091

# Penthouse for rent in Castellana (Madrid)

## Features

- ✓ Heating
- ✓ AACC
- ✓ Lift
- ✓ Furnished
- ✓ Terrace
- ✓ Concierge

Price  
**3,990 €**

Surface

**91 m<sup>2</sup>**

Bedrooms

**2**

Bathrooms

**2**



**Fantastic penthouse with 2 bedrooms and 2 bathrooms located in Velázquez street, with an exceptional reform and a few steps from the most emblematic points of the Salamanca neighborhood.**

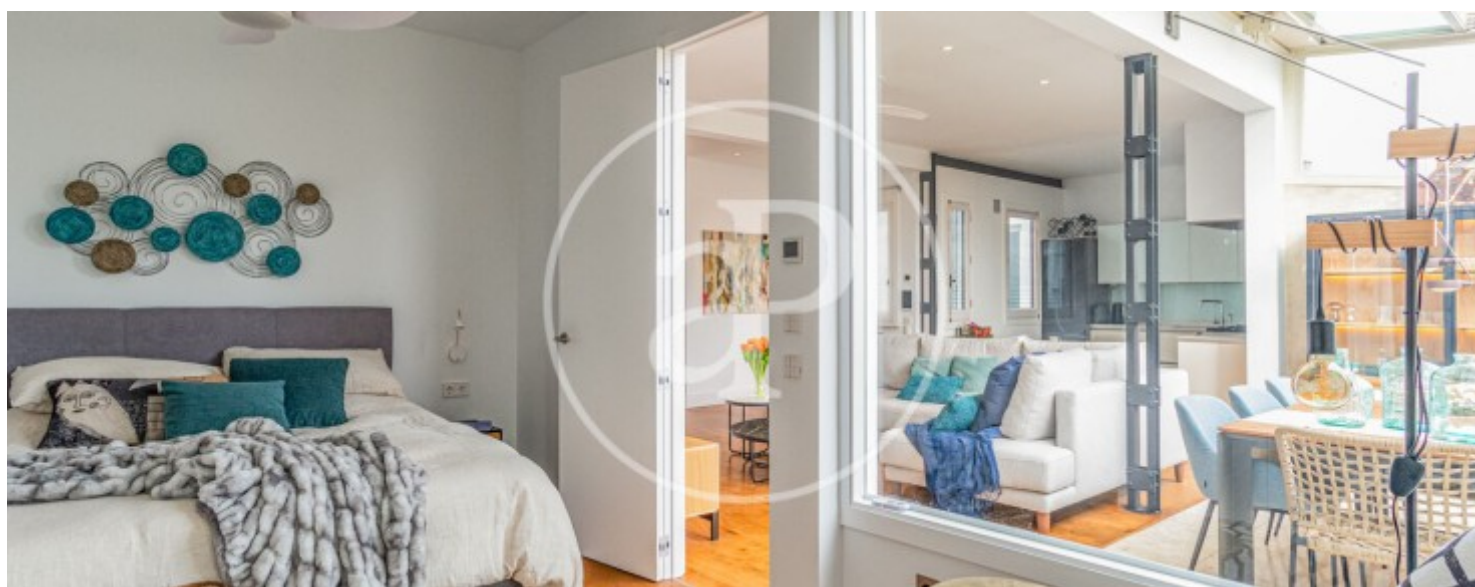
This bright penthouse, in the heart of the Salamanca district, has a recent reform and is equipped to the smallest detail. Its uniqueness is its terrace integrated into the house, fully glazed, with plants and trees and with which to admire the blue sky of Madrid. The house, of about 90 m2 built, is located on the 8th floor and has been renovated giving it a very comfortable distribution, with living area, dining room and kitchen in the same large and open space, very

bright. The kitchen, with 2 windows to the patio, has all kinds of professional appliances, some with industrial style, which give this space a very original style. The large peninsula serves both as a work area for cooking and as a breakfast bar. Right next to the kitchen bar, there is a cozy work area with a window that allows direct light to enter. The living room is the center of the house. Presided by a large and comfortable corner sofa, side tables and large TV. From here you access the two bedrooms and the bright dining room. The dining room is equipped with a sturdy and large...

**Contact us,**  
we will be happy to assist you,  
to offer you more details and information.

Castellana, Madrid

REF. AM2406091



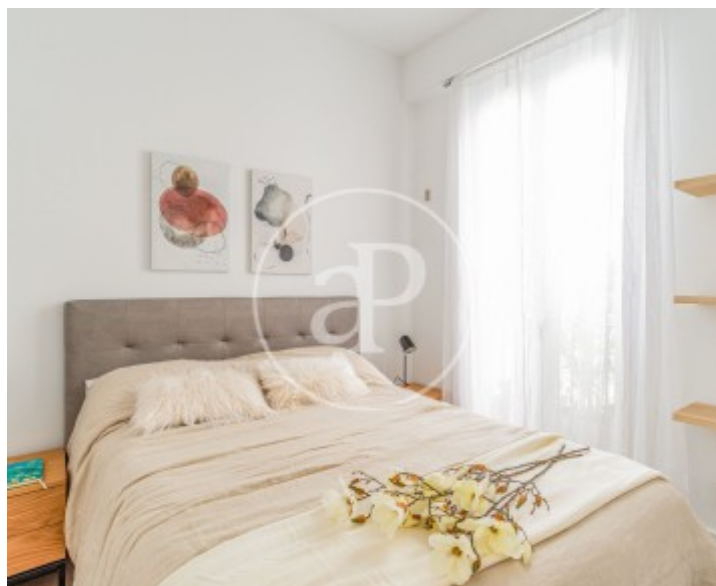
Castellana, Madrid

REF. AM2406091



Castellana, Madrid

REF. AM2406091



The information about any property is not binding to any offer or contract. Any verbal or written declaration made by aProperties with regards to the value or condition of the property should not be considered accurate or factual. The pictures make reference to some parts of the property at the times that they were taken. The areas, dimensions and distances that are given are approximate and should be checked by the client. The images are computer generated and are just an approximate indication of the real appearance of the property; these may change at any time. The information with regards to the property may also change at any time.

For **more information** or  
to make an appointment

[apropertiesmadrid@aproperties.es](mailto:apropertiesmadrid@aproperties.es)  
Tel: 91 800 54 65  
[www.aproperties.es](http://www.aproperties.es)