

Castellana, Madrid

REF. AM2012096

Flat for rent in Castellana (Madrid)

Features

- ✓ Heating
- ✓ AACC
- ✓ Lift
- ✓ Concierge

Surface

45 m²

Bedroom

1

Bathroom

1

Price

900 €



This apartment located in the Salamanca district has 54sqm and is rented unfurnished.

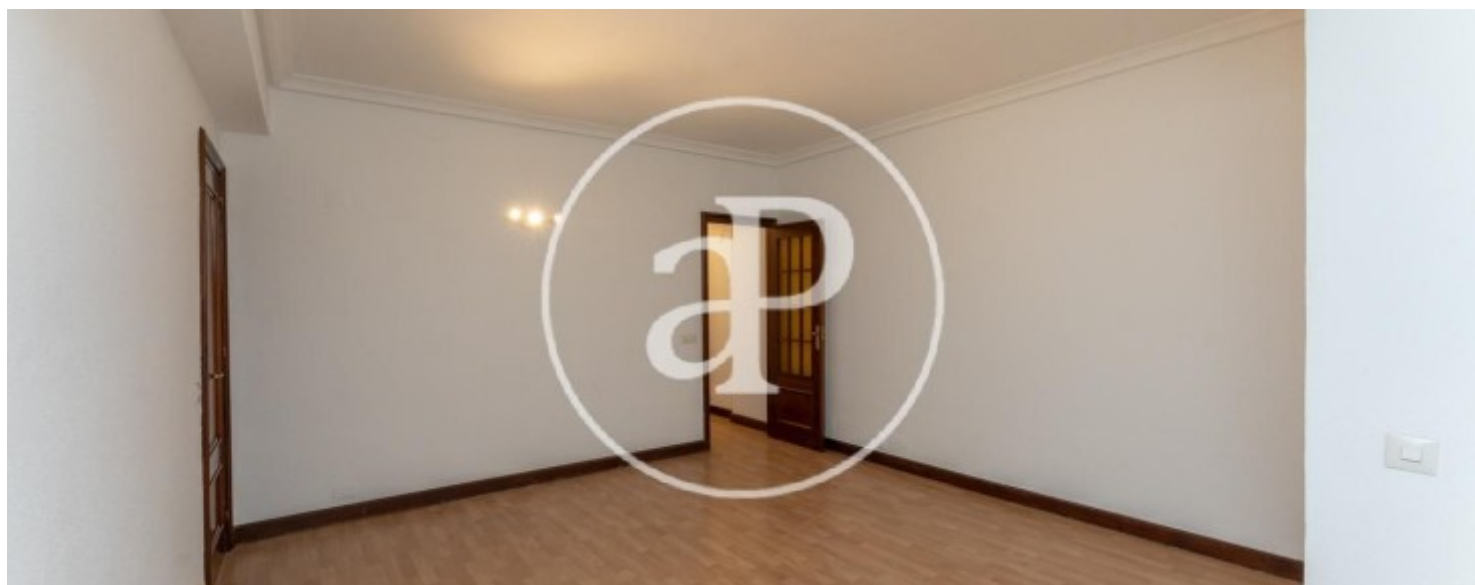
In the day area it has an entrance hall, a huge living room that looks out onto an inner courtyard with lots of light and a separate kitchen. In the night area it has a great room with large closets with trunks and fantastic finish inside. The house has parquet floors, central heating included in the price and air conditioning. The apartment is located in a building with a classic facade, with a magnificent portal with elevator and concierge. Located in one of the most important commercial areas of the city and one of the districts with the highest standard of living in Europe

with the largest luxury shopping area in Madrid Serrano streets, great offer of restaurants and leisure area. International study centers very close by.

Contact us,
we will be happy to assist you,
to offer you more details and information.

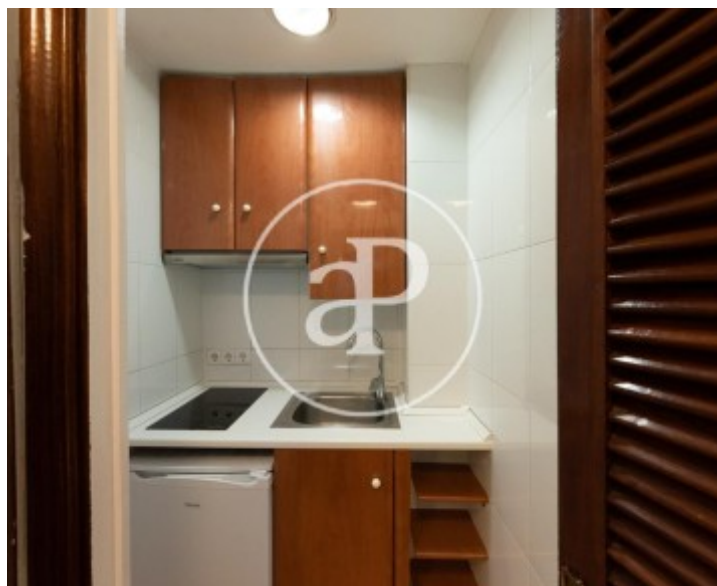
Castellana, Madrid

REF. AM2012096



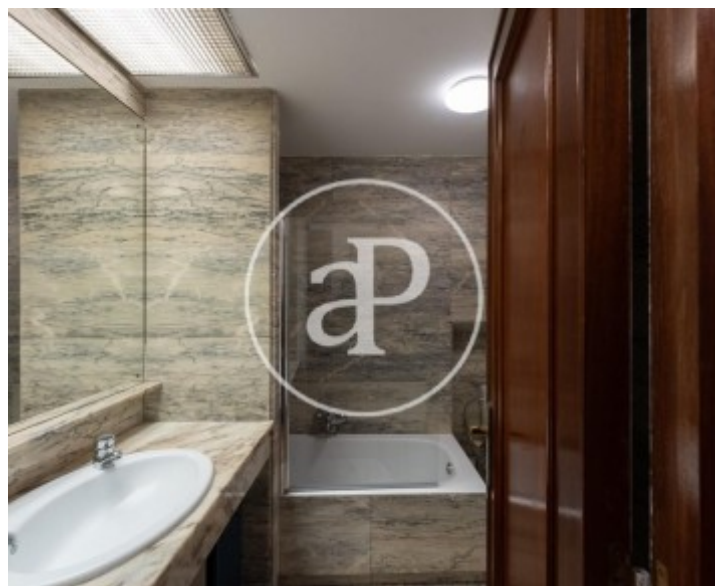
Castellana, Madrid

REF. AM2012096



Castellana, Madrid

REF. AM2012096



The information about any property is not binding to any offer or contract. Any verbal or written declaration made by aProperties with regards to the value or condition of the property should not be considered accurate or factual. The pictures make reference to some parts of the property at the times that they were taken. The areas, dimensions and distances that are given are approximate and should be checked by the client. The images are computer generated and are just an approximate indication of the real appearance of the property; these may change at any time. The information with regards to the property may also change at any time.

For **more information** or
to make an appointment

apropertiesmadrid@aproperties.es
Tel: 91 800 54 65
www.aproperties.es