

Castellana, Madrid

REF. AM2606095

Penthouse for rent in Juan Bravo.

Features

- ✓ Heating
- ✓ AACC
- ✓ Lift
- ✓ Has parking
- ✓ Boxroom
- ✓ Terrace
- ✓ Concierge

Price

10,000 €

Surface

330 m²

Bedrooms

4

Bathrooms

5



Luxury penthouse with a large terrace and city views in the Salamanca district.

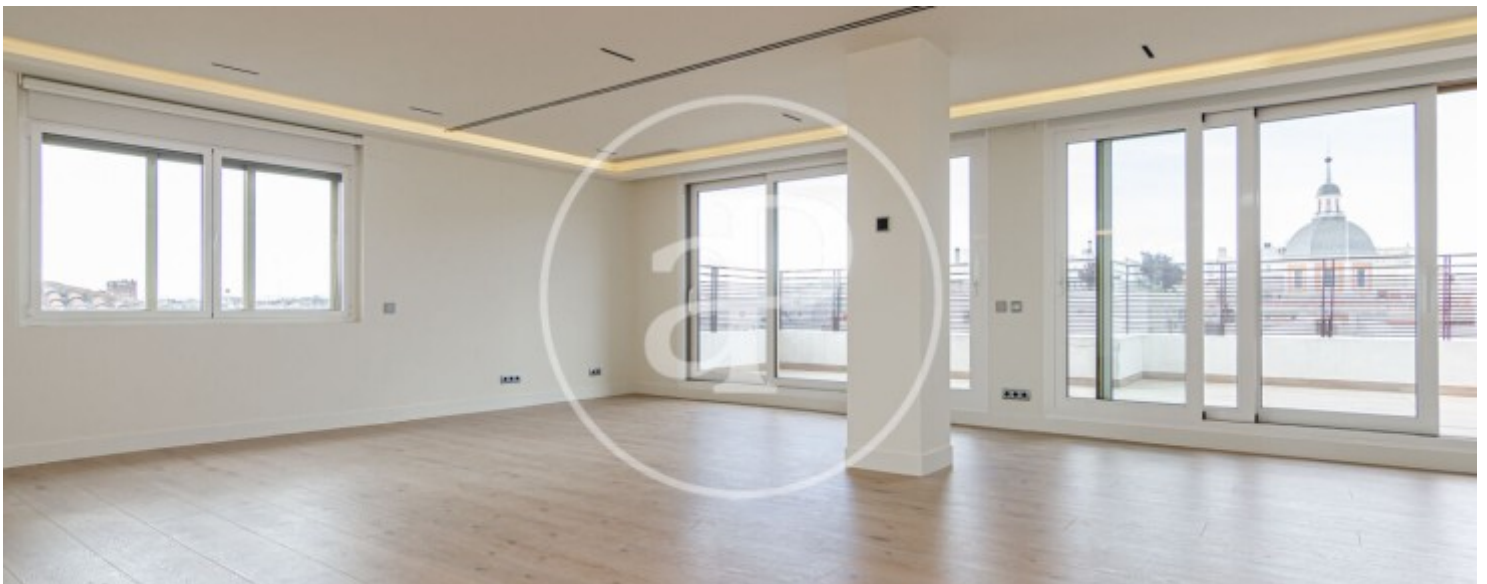
This 330m² (3,300 sq ft) apartment has been completely renovated and boasts a superb layout. Located on the seventh floor, the entrance opens into a grand, bright, and airy 70m² (700 sq ft) living room with large windows, allowing abundant natural light. The room features electric blinds and shades. The living room also features a beautiful fireplace and a high-quality, fully equipped Santos kitchen with modern concealed appliances, creating a clean and uncluttered look. Both the living room and kitchen provide access to the large terrace, which offers fantastic views. Adjacent

to the kitchen is the service area, which includes a laundry room, a bedroom, a bathroom, and a separate service entrance. The sleeping area comprises three bedrooms, all en suite with walk-in showers. The master bedroom also features two spacious dressing rooms, a bathroom with a walk-in shower and a magnificent bathtub, and a guest toilet. Built-in wardrobes, high ceilings, and floor-to-ceiling doors. The floors are high-quality wood with radiant heating and cooling, plus a ducted heat pump. Home automation system. A parking space in the same building is included, as well as a storage room...

Contact us,
we will be happy to assist you,
to offer you more details and information.

Castellana, Madrid

REF. AM2606095



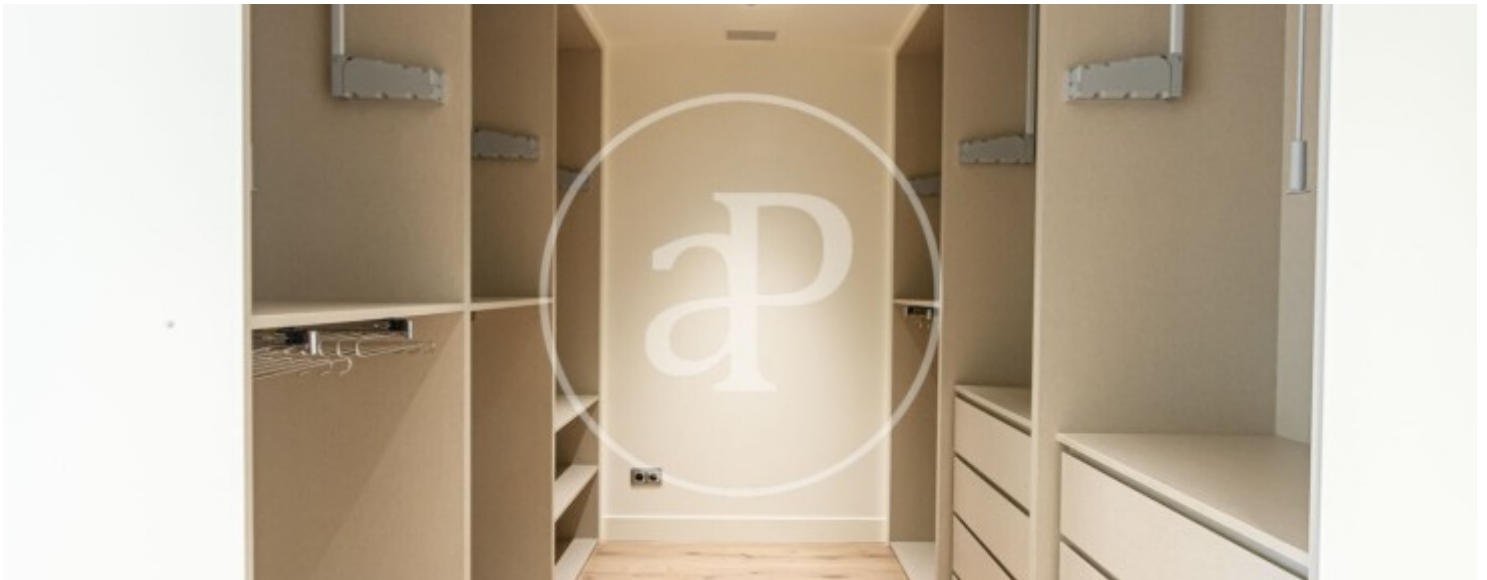
Castellana, Madrid

REF. AM2606095



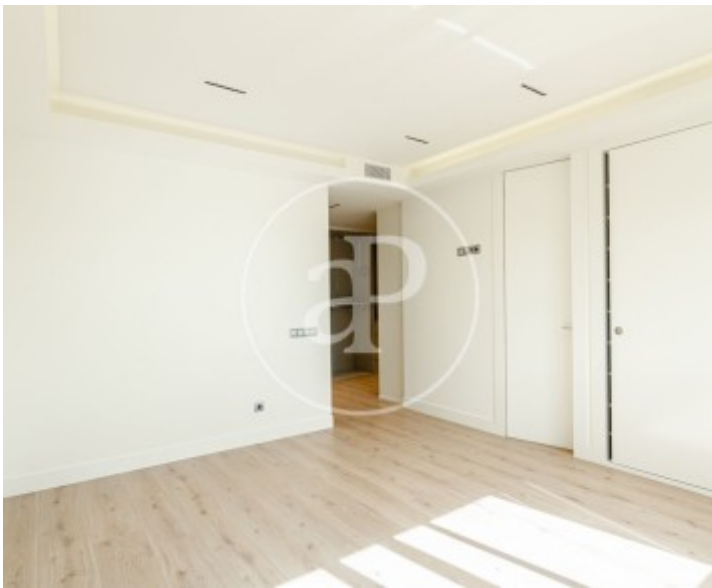
Castellana, Madrid

REF. AM2606095



Castellana, Madrid

REF. AM2606095



The information about any property is not binding to any offer or contract. Any verbal or written declaration made by aProperties with regards to the value or condition of the property should not be considered accurate or factual. The pictures make reference to some parts of the property at the times that they were taken. The areas, dimensions and distances that are given are approximate and should be checked by the client. The images are computer generated and are just an approximate indication of the real appearance of the property; these may change at any time. The information with regards to the property may also change at any time.

For **more information** or
to make an appointment

apropertiesmadrid@aproperties.es
Tel: 91 800 54 65
www.aproperties.es