

Castellana, Madrid

REF. VM2412027

Flat for sale in Diego de León (Madrid)

Features

- ✓ Views
- ✓ Heating
- ✓ Furnished
- ✓ AACC
- ✓ Lift
- ✓ Concierge

Surface

140 m²

Bedrooms

3

Bathrooms

2

Price

1,650,000 €



In the heart of the Barrio de Salamanca in one of the main arteries such as Diego de León, aProperties presents this beautiful flat in the process of renovation.

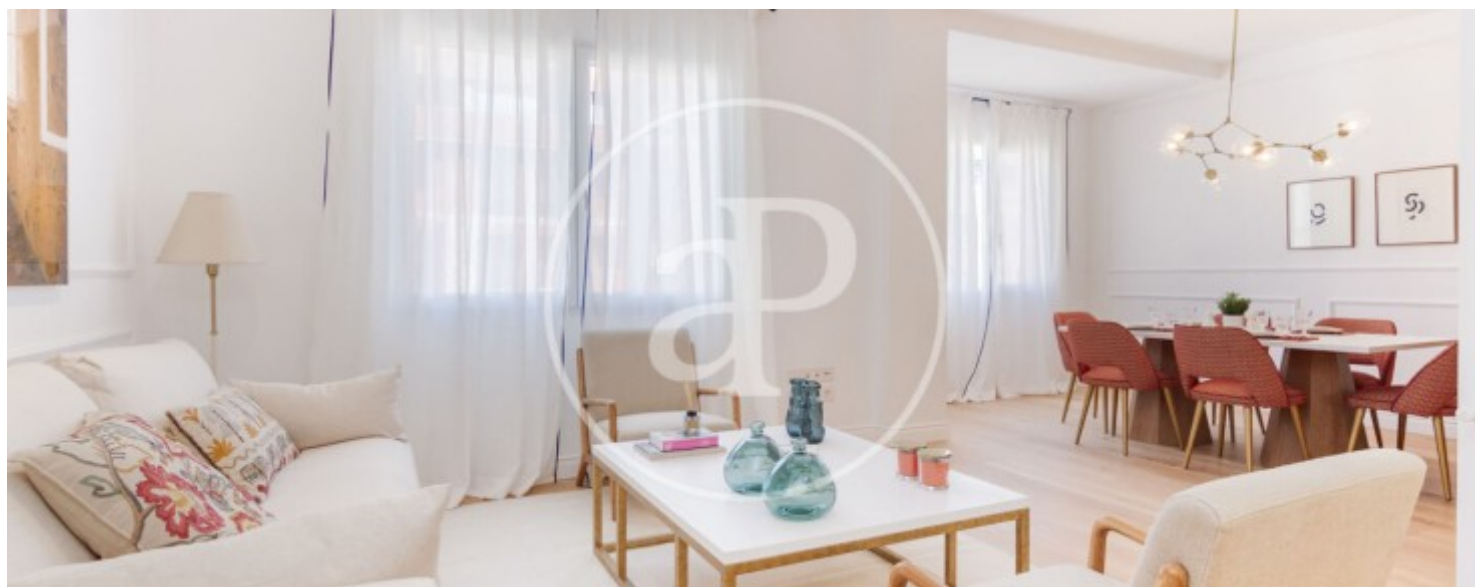
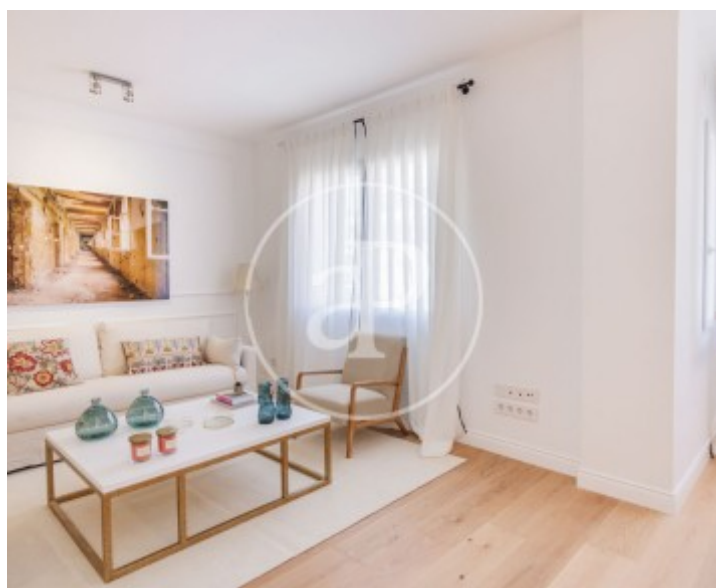
The photos shown are indicative of a very similar reform, it is a sixth floor, has 132 m² built according to the land registry and is located in a beautiful classic estate of 1945 in perfect state of conservation. The property will comprise of a magnificent square living/dining room with bay window and window to the exterior and an integrated kitchen equipped with panelled appliances. The night area will have three double bedrooms and three complete bathrooms, two of them en suite, as well as a

practical laundry area. The luminosity of all its rooms thanks to its height and its orientation make this house unique. We highlight the careful design of the refurbishment with high qualities such as oak floors, custom-made white lacquered wood carpentry, high ceilings. Air conditioning by ducts in all rooms. The property has a porter service. The area in which it is located is equipped with all the essential services and it is a unique opportunity to acquire a property in the most sought-after area of Madrid. Can you imagine living here?

Contact us,
we will be happy to assist you,
to offer you more details and information.

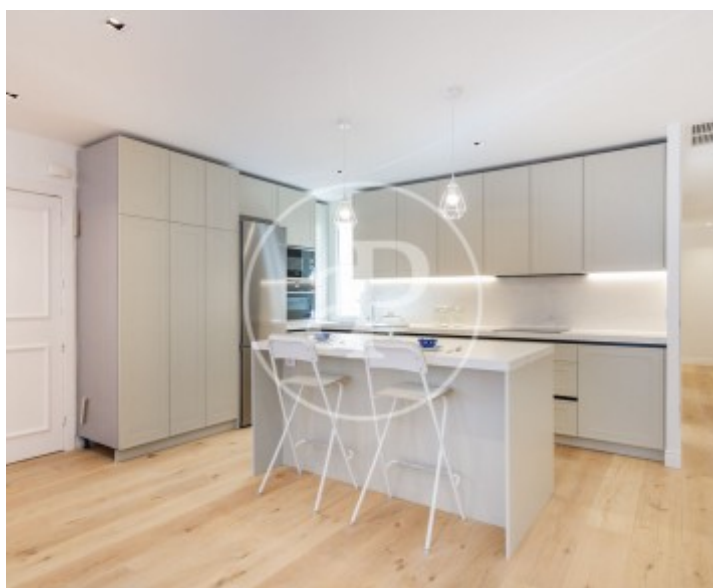
Castellana, Madrid

REF. VM2412027



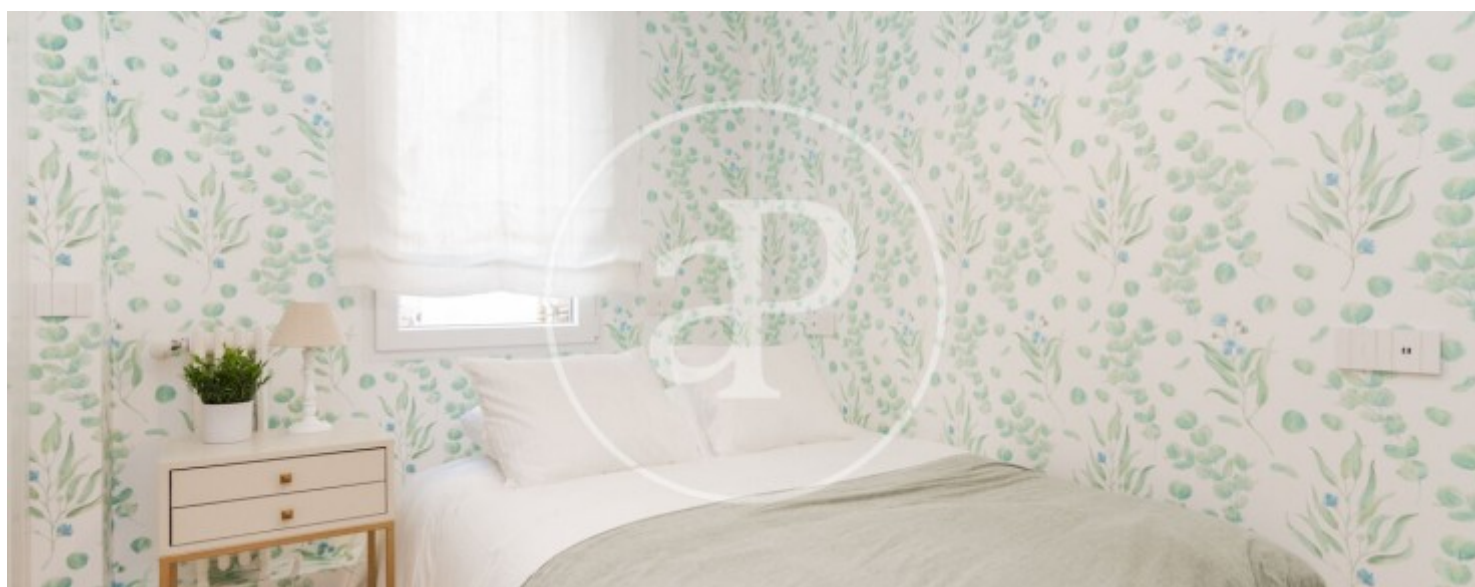
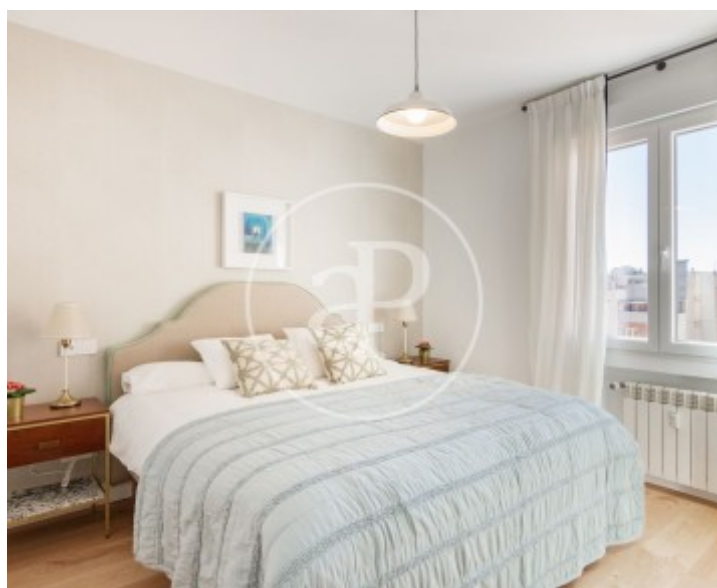
Castellana, Madrid

REF. VM2412027



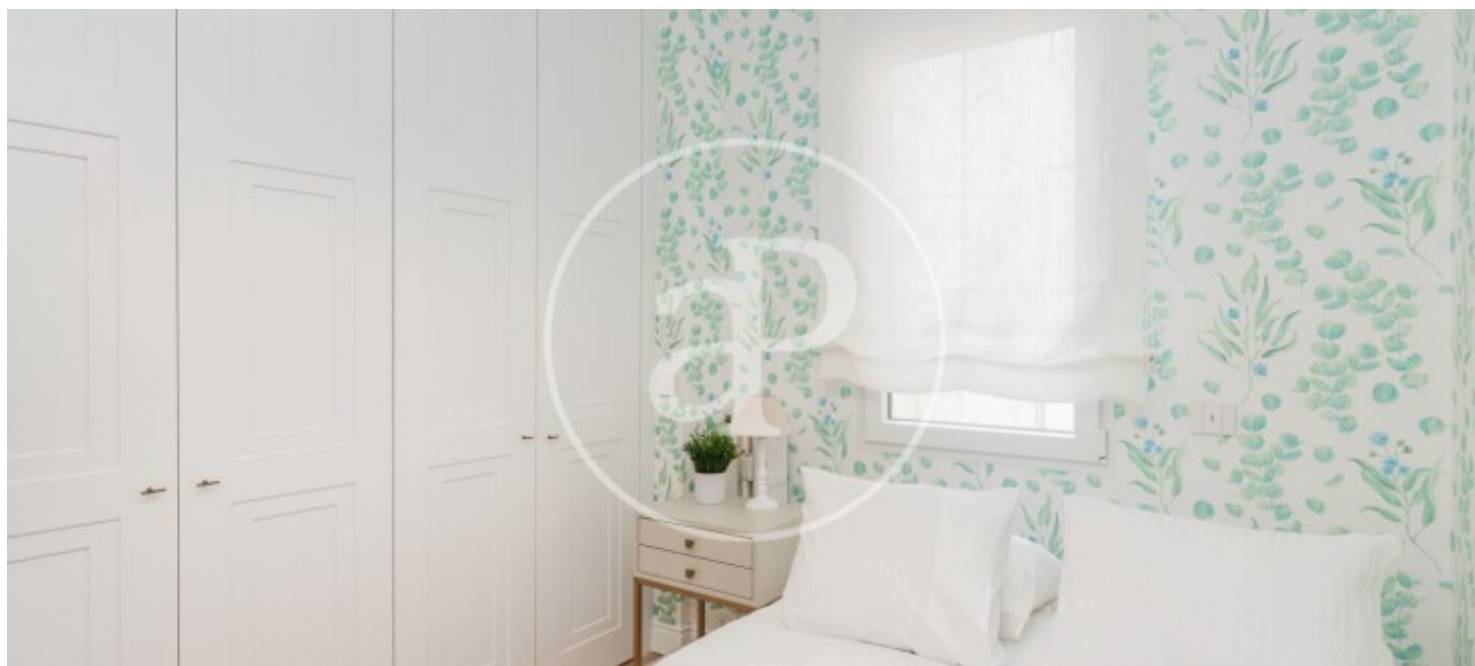
Castellana, Madrid

REF. VM2412027



Castellana, Madrid

REF. VM2412027



The information about any property is not binding to any offer or contract. Any verbal or written declaration made by aProperties with regards to the value or condition of the property should not be considered accurate or factual. The pictures make reference to some parts of the property at the times that they were taken. The areas, dimensions and distances that are given are approximate and should be checked by the client. The images are computer generated and are just an approximate indication of the real appearance of the property; these may change at any time. The information with regards to the property may also change at any time.

For **more information** or
to make an appointment

apropertiesmadrid@aproperties.es
Tel: 91 800 54 65
www.aproperties.es