

Bernabéu - Hispanoamérica, Madrid

REF. VM2309001



Flat for sale in calle Bolivia.

Features

- ✓ Heating
- ✓ AACC
- ✓ Backyard
- ✓ Gym
- ✓ Security
- ✓ Boxroom
- ✓ Terrace
- ✓ Pool
- ✓ Lift
- ✓ Concierge

Price

785,000 €

Surface

110 m²

Bedrooms

2

Bathrooms

2



Bright flat ready to move into with two bedrooms and two bathrooms, one of which is en-suite.

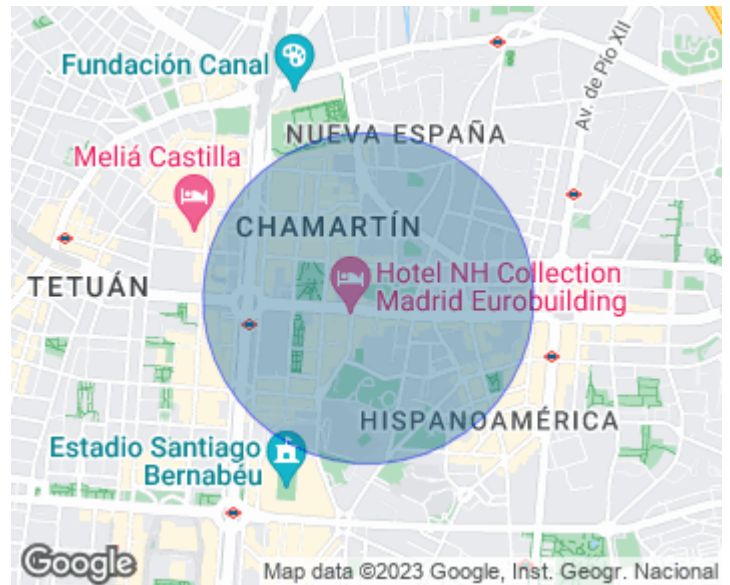
Access to the property is through a hallway that leads to a spacious living-dining room with terrace and barbecue incorporated into the building with west orientation and with visits... Spacious bedrooms, one of which is en suite with fitted wardrobes and access to the terrace. The kitchen has been refurbished and gives access to another covered interior terrace which is used as a utility room. The communal areas have a children's playground, swimming pool, tennis court and a communal gymnasium equipped with apparatus and changing rooms, Possibility of

parking space with direct access to the property. It is located in one of the best areas of Chamartín, very well communicated next to the metro and several bus lines and the Chamartín market, surrounded by shops, green and leisure areas and perfectly communicated. Can you imagine living here?

Contact us,
we will be happy to assist you,
to offer you more details and information.

Bernabéu - Hispanoamérica, Madrid

REF. VM2309001





APROPERTIES
REAL ESTATE

Calle Serrano 60
28001 Madrid
T. 91 800 54 65
www.aproperties.es

Bernabéu - Hispanoamérica, Madrid

REF. VM2309001



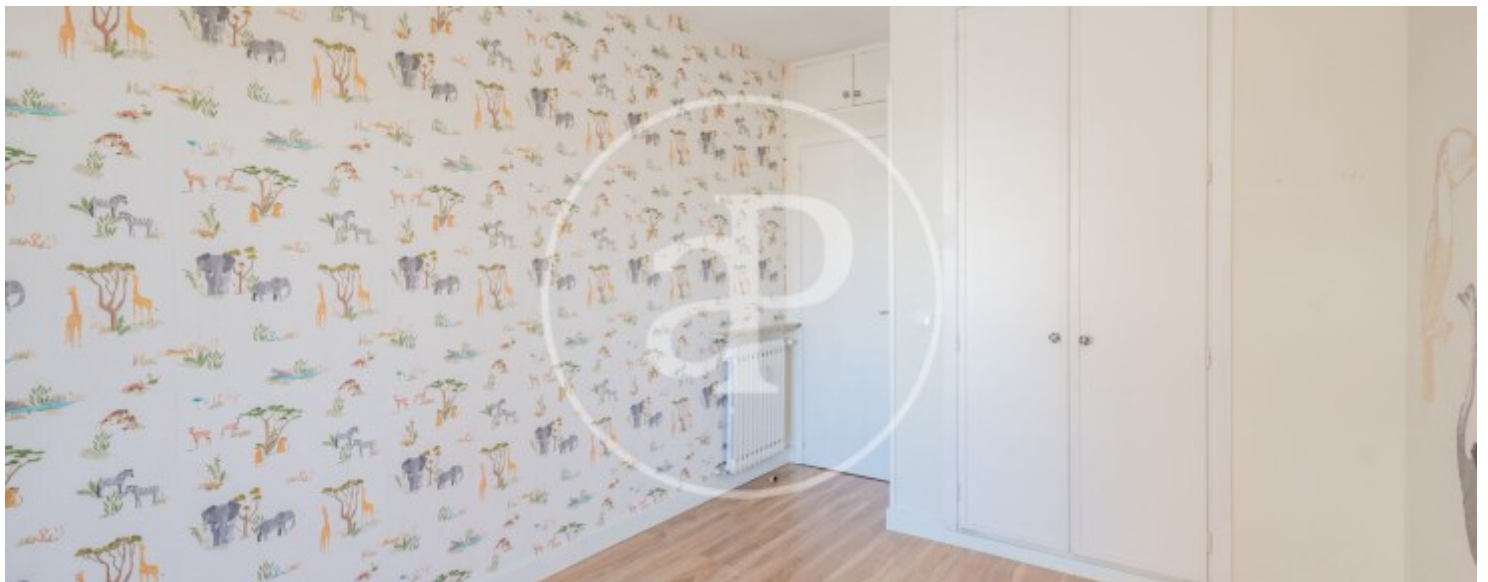
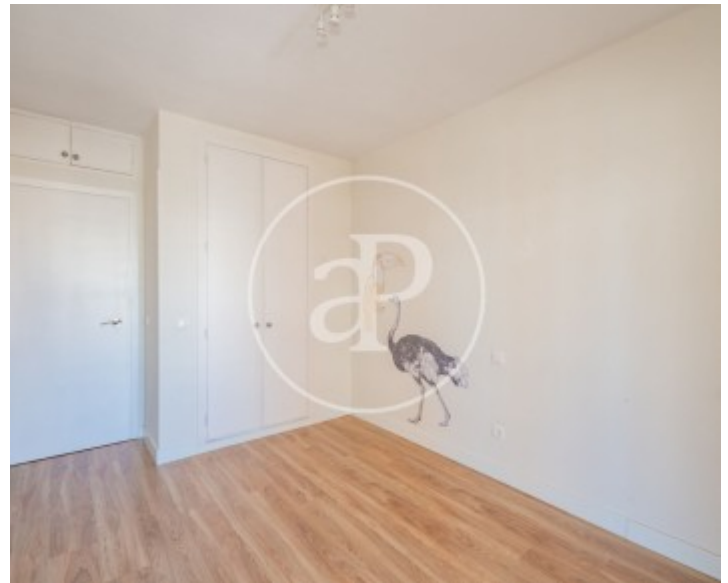


APROPERTIES
REAL ESTATE

Calle Serrano 60
28001 Madrid
T. 91 800 54 65
www.aproperties.es

Bernabéu - Hispanoamérica, Madrid

REF. VM2309001



Bernabéu - Hispanoamérica, Madrid

REF. VM2309001



The information about any property is not binding to any offer or contract. Any verbal or written declaration made by aProperties with regards to the value or condition of the property should not be considered accurate or factual. The pictures make reference to some parts of the property at the times that they were taken. The areas, dimensions and distances that are given are approximate and should be checked by the client. The images are computer generated and are just an approximate indication of the real appearance of the property; these may change at any time. The information with regards to the property may also change at any time.



For **more information** or
to make an appointment

apropertiesmadrid@aproperties.es
Tel: 91 800 54 65
www.aproperties.es