



Bernabéu - Hispanoamérica, Madrid

REF. AM2602003

# Flat for rent in Bernabéu

## Features

- ✓ Heating
- ✓ Terrace
- ✓ Concierge
- ✓ AACC
- ✓ Lift
- ✓ Has parking

Price  
**3,900 €**

Surface  
**200 m<sup>2</sup>**

Bedrooms  
**3**

Bathrooms  
**3**



**200 m<sup>2</sup> apartment with a terrace, opposite the Bernabéu Stadium, in a building with a classic facade, elegant entrance, concierge, and elevator.**

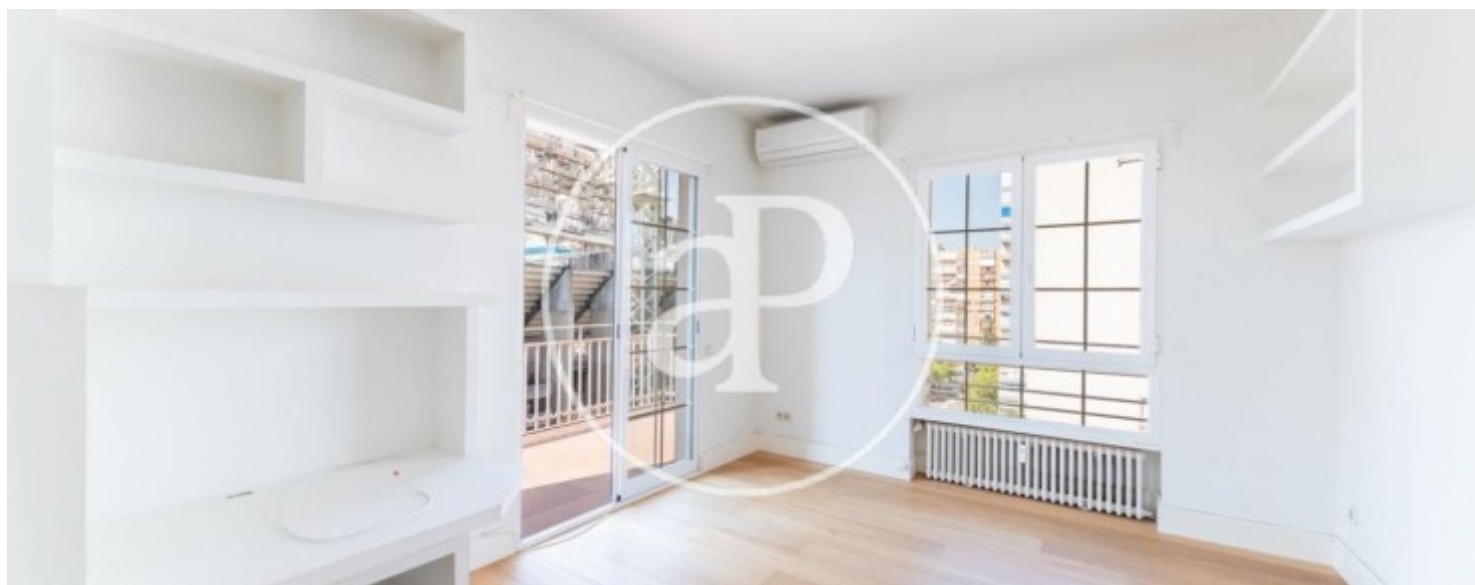
All exterior-facing corner unit with a terrace, recently renovated. Successive living rooms: one dining room and two separate living and sitting areas. Three bedrooms, the master suite with a full bathroom and a very spacious walk-in closet. Two large, bright bedrooms share a beautiful full bathroom with a bathtub and a modern guest toilet. The very spacious kitchen is fully equipped with top-brand appliances and includes a laundry area for washing machine and ironing. Excellent construction quality, newly

installed hardwood floors, double-glazed windows, and built-in wardrobes. Optional parking space for an additional €160. Central heating with individual meters and air conditioning. Superb location opposite the Bernabéu Stadium, close to the metro and several bus lines. The area boasts several highly regarded bilingual schools. Can you imagine living here?

**Contact us,**  
we will be happy to assist you,  
to offer you more details and information.

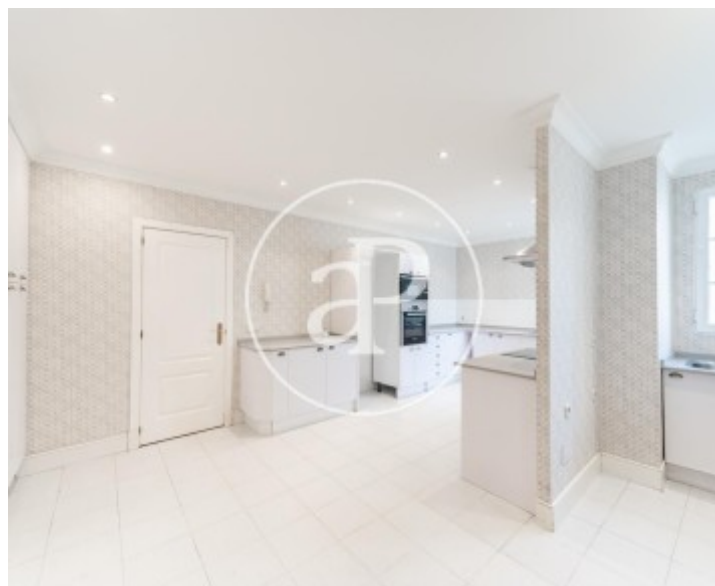
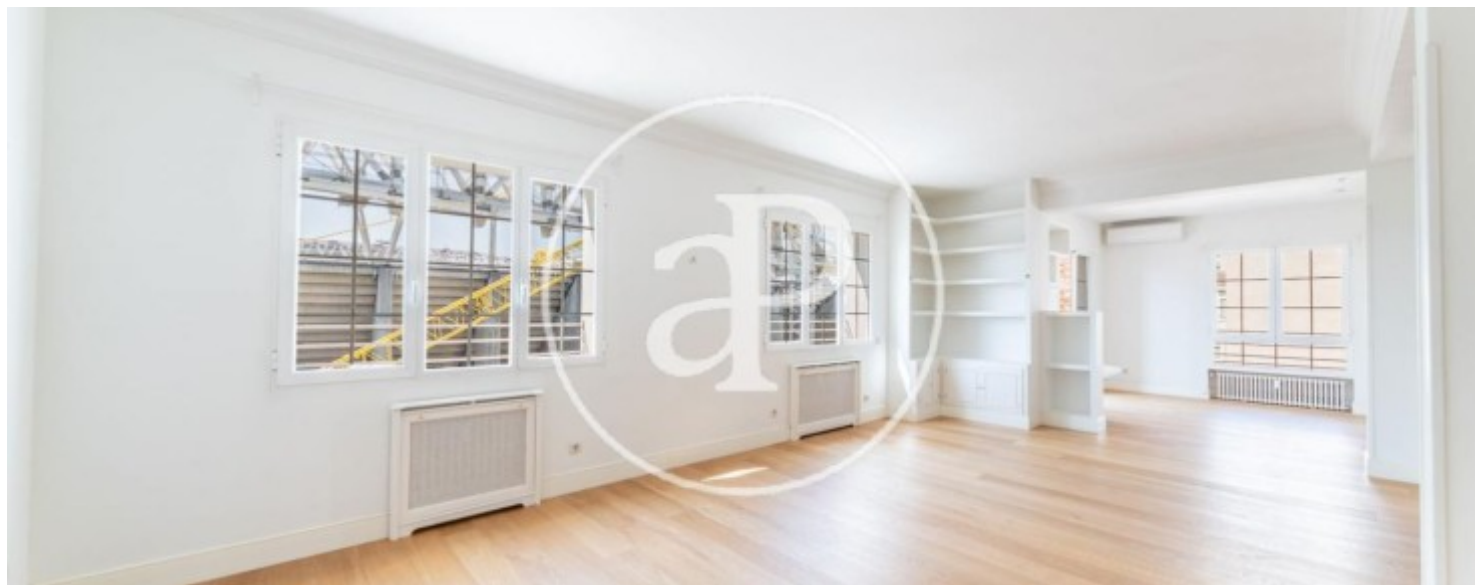
Bernabéu - Hispanoamérica, Madrid

REF. AM2602003



Bernabéu - Hispanoamérica, Madrid

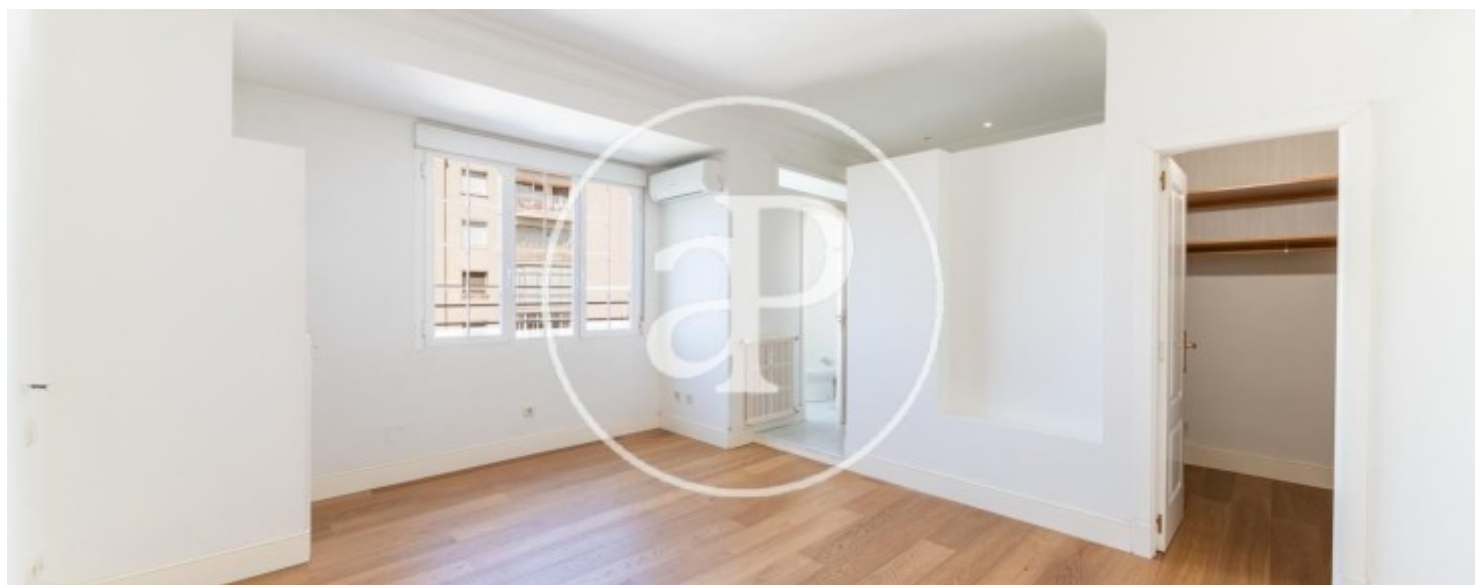
REF. AM2602003





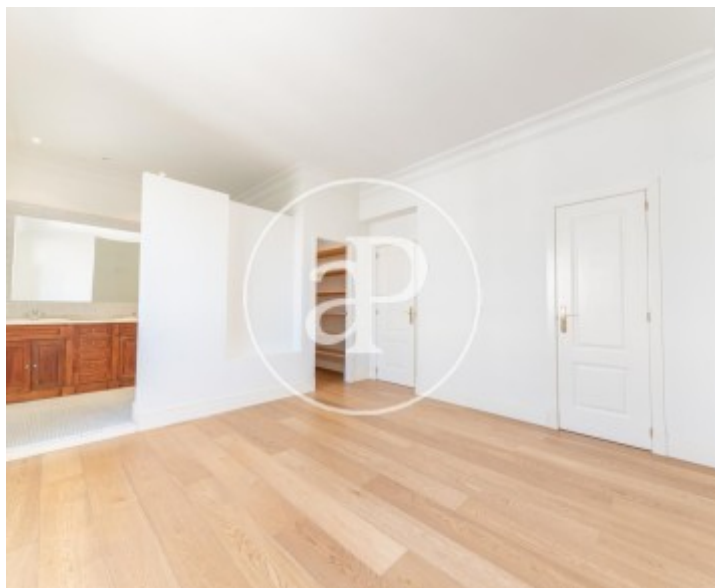
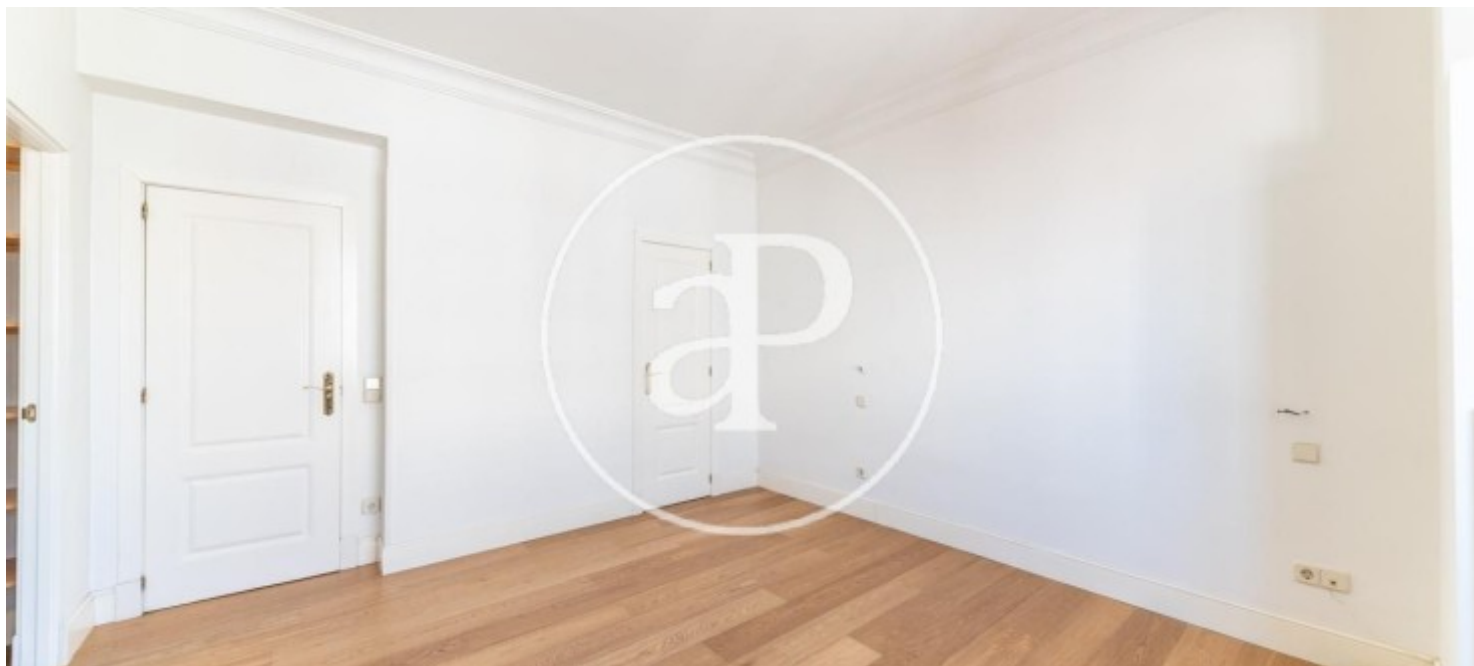
Bernabéu - Hispanoamérica, Madrid

REF. AM2602003



Bernabéu - Hispanoamérica, Madrid

REF. AM2602003



The information about any property is not binding to any offer or contract. Any verbal or written declaration made by aProperties with regards to the value or condition of the property should not be considered accurate or factual. The pictures make reference to some parts of the property at the times that they were taken. The areas, dimensions and distances that are given are approximate and should be checked by the client. The images are computer generated and are just an approximate indication of the real appearance of the property; these may change at any time. The information with regards to the property may also change at any time.

For **more information** or  
to make an appointment

[apropertiesmadrid@aproperties.es](mailto:apropertiesmadrid@aproperties.es)  
Tel: 91 800 54 65  
[www.aproperties.es](http://www.aproperties.es)