

Argüelles, Madrid

REF. VM2309063



## Flat for sale in calle Ilustración.

### Features

- ✓ Views
- ✓ AACC
- ✓ Concierge
- ✓ Heating
- ✓ Lift

Price

**599,000 €**

Surface

**98 m<sup>2</sup>**

Bedrooms

**2**

Bathroom

**1**



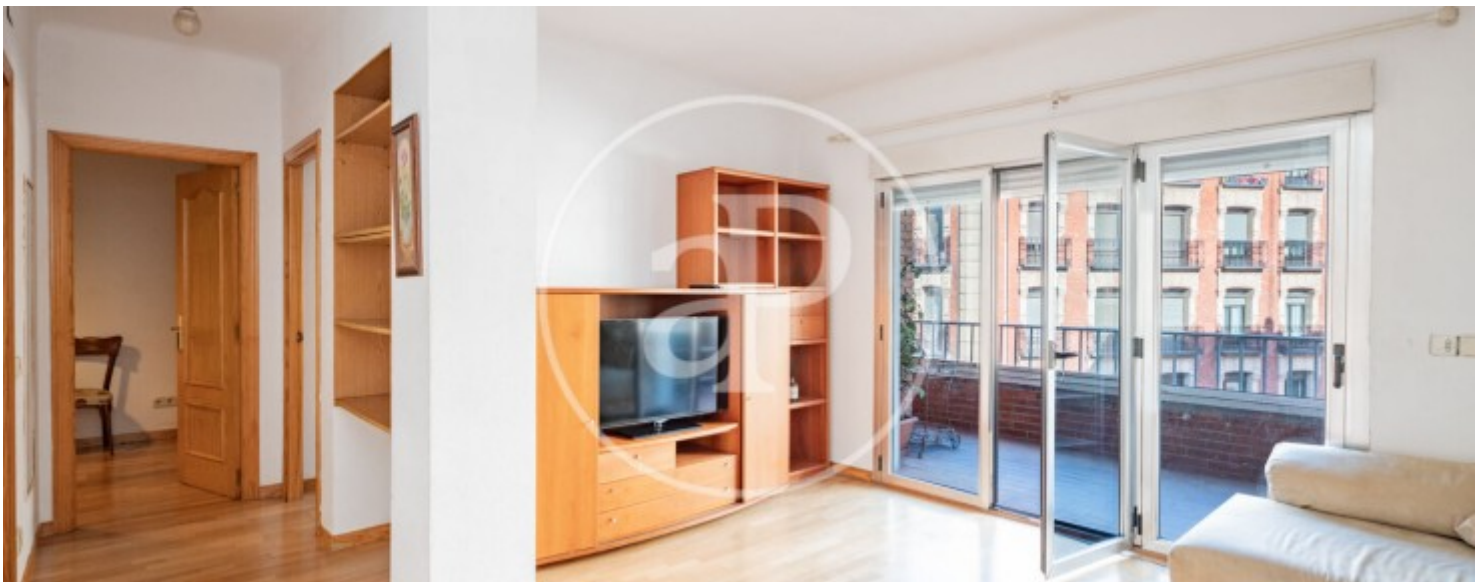
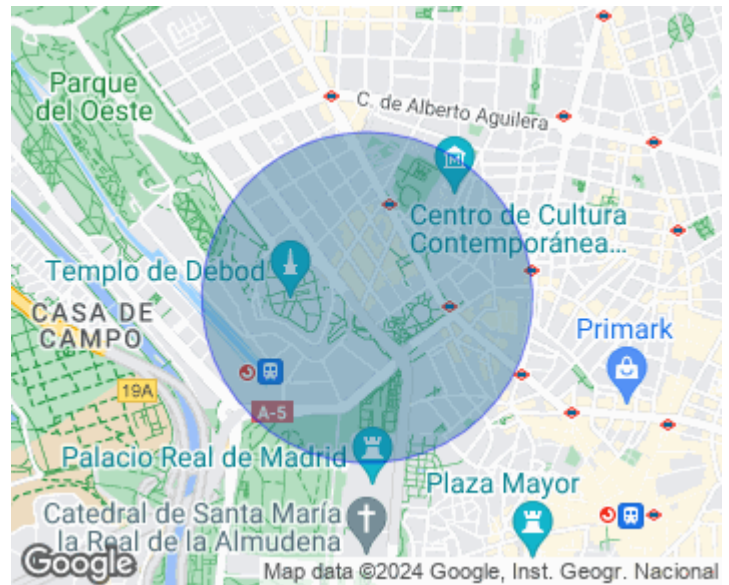
Located in Ilustración street, very close to Plaza de España and the emblematic Príncipe Pío station, in front of the Royal Palace and very close to Madrid Río, this beautiful flat, of 98 built meters, according to the land registry, is bathed by natural light from the huge west-facing terrace. It has two bedrooms, a very spacious bathroom, living room and large independent kitchen. The absence of load-bearing walls allows for a great redistribution from where you can get three bedrooms and two bathrooms without any problem. It has air conditioning, hot water and individual natural gas heating. It has porter service and lift. Community fees 77 €. Undoubtedly, the star of the house is the terrace that includes the living room and master bedroom, overlooking the

station and country house. Living, feeling, enjoying and interacting between the palace neighbourhoods and the Madrid Río park is a fantastic experience in many ways: cultural, gastronomic, social, security and wellbeing. It is also the ideal place to have a home, to share with loved ones and a good investment that offers a lot of security. Can you imagine living here?

**Contact us,**  
we will be happy to assist you,  
to offer you more details and information.

Argüelles, Madrid

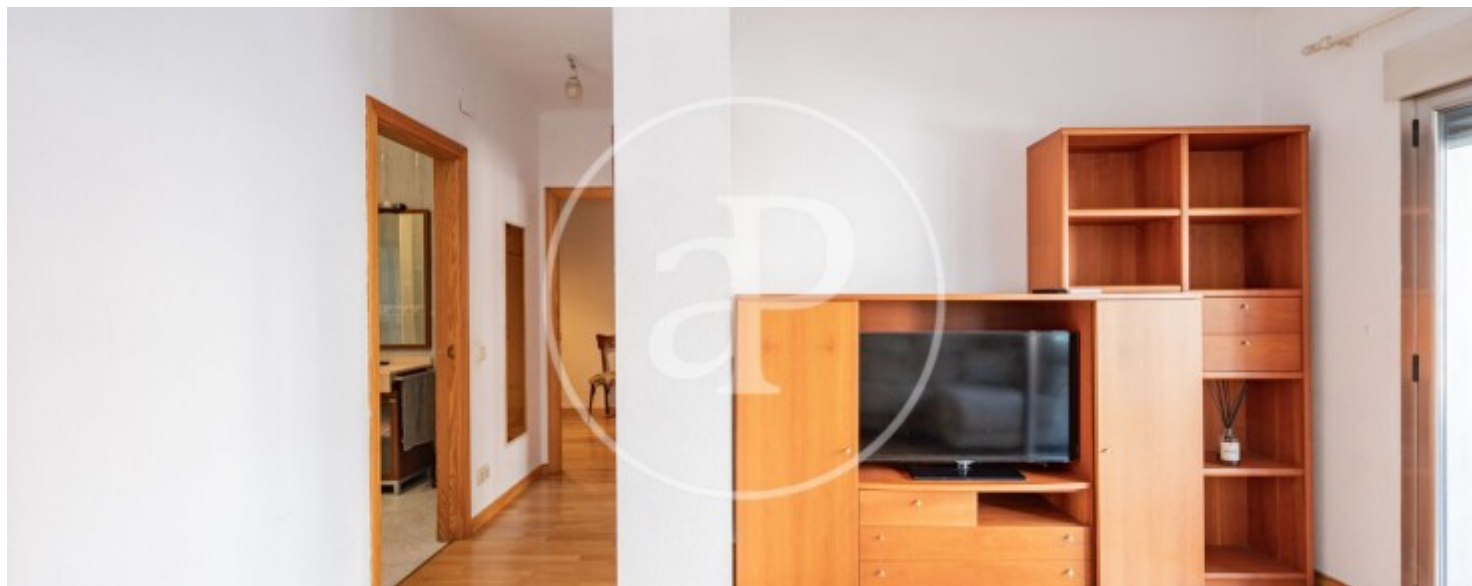
REF. VM2309063





Argüelles, Madrid

REF. VM2309063





APROPERTIES  
REAL ESTATE

Calle Serrano 60  
28001 Madrid  
T. 91 800 54 65  
[www.aproperties.es](http://www.aproperties.es)

Argüelles, Madrid

REF. VM2309063





Argüelles, Madrid

REF. VM2309063



The information about any property is not binding to any offer or contract. Any verbal or written declaration made by aProperties with regards to the value or condition of the property should not be considered accurate or factual. The pictures make reference to some parts of the property at the times that they were taken. The areas, dimensions and distances that are given are approximate and should be checked by the client. The images are computer generated and are just an approximate indication of the real appearance of the property; these may change at any time. The information with regards to the property may also change at any time.



For **more information** or  
to make an appointment

[apropertiesmadrid@aproperties.es](mailto:apropertiesmadrid@aproperties.es)  
Tel: 91 800 54 65  
[www.aproperties.es](http://www.aproperties.es)