



Arapiles, Madrid

REF. VM2512038

Flat for sale in Chamberí

Features

- ✓ Heating
- ✓ Boxroom
- ✓ Lift
- ✓ Has parking
- ✓ Furnished
- ✓ AACC
- ✓ Concierge

Price

1,280,000 €

Surface

173 m²

Bedrooms

4

Bathrooms

2



Magnificent outdoor house for sale, spacious and full of light, located in one of the most coveted enclaves of Chamberí, next to ICADE and a step away from Suchill Valley.

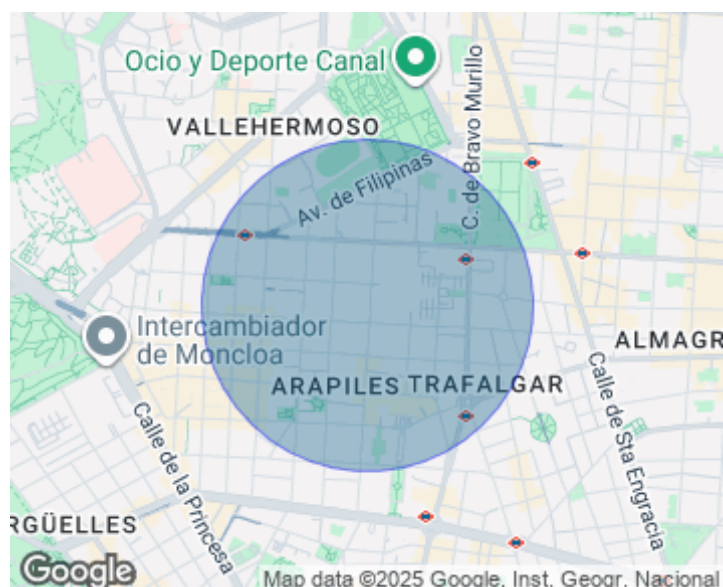
Located in an emblematic and protected building, this property is an example of classic charm and quality of life. The property has 173 m2. It is accessed by a large hall to a large living room with south view. Contains 4 large bedrooms, with fitted wardrobes, large independent kitchen completely renovated and equipped and 2 full bathrooms, plus a storage room. It has high ceilings, flooring and double-glazed windows. It is a third floor outside, very bright; in addition to the

gazebo of the living room, two of the bedrooms have balconies facing south, with shutters of restored iron frailerros. Heating is individual by natural gas with condensing boiler Vaillant and iron radiators. The very well maintained farm has adapted access, elevator and concierge. Double garage space included in the price, a privilege in the area. Its unbeatable location, located in the heart of Chamberí, in an exclusive residential area, quiet and perfectly communicated, a few meters from universities, shops, restaurants, green areas and public transport make it an excellent...

Contact us,
we will be happy to assist you,
to offer you more details and information.

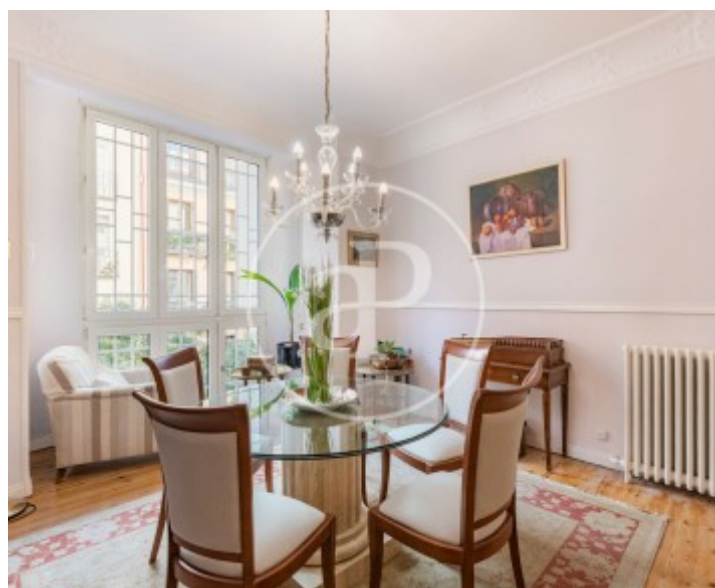
Arapiles, Madrid

REF. VM2512038



Arapiles, Madrid

REF. VM2512038



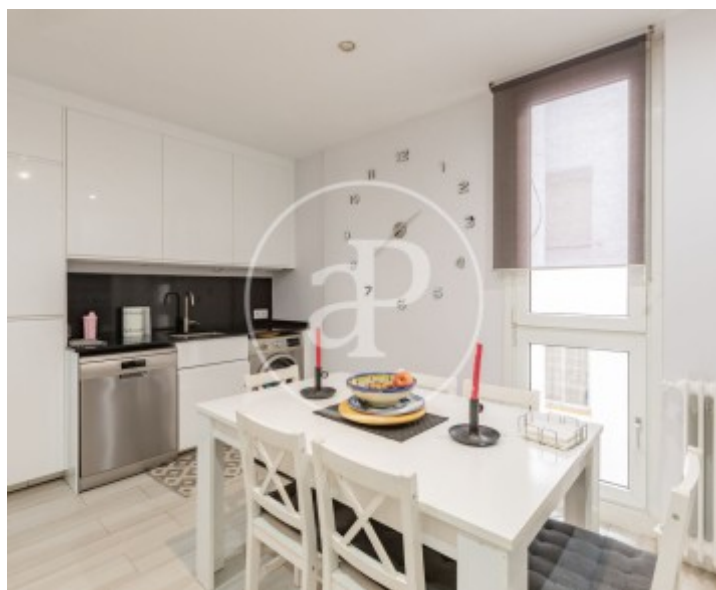
Arapiles, Madrid

REF. VM2512038



Arapiles, Madrid

REF. VM2512038



The information about any property is not binding to any offer or contract. Any verbal or written declaration made by aProperties with regards to the value or condition of the property should not be considered accurate or factual. The pictures make reference to some parts of the property at the times that they were taken. The areas, dimensions and distances that are given are approximate and should be checked by the client. The images are computer generated and are just an approximate indication of the real appearance of the property; these may change at any time. The information with regards to the property may also change at any time.

For **more information** or
to make an appointment

apropertiesmadrid@aproperties.es
Tel: 91 800 54 65
www.aproperties.es