

Arapiles, Madrid

REF. VM2606035

Penthouse for Sale in Chamberí

Features

- ✓ Views
- ✓ Heating
- ✓ AACC
- ✓ Terrace
- ✓ Lift
- ✓ Has parking

Surface

122 m²

Bedrooms

3

Bathrooms

2

Price

1,290,000 €



Located in the Quevedo area, one of Madrid's most vibrant and sought-after neighbourhoods, this 122 m² exterior penthouse occupies the sixth floor of a distinctive building.

A property full of character, natural light, and featuring a pleasant terrace that enhances the sense of space while connecting the interior with the rhythm of the city. Ready to move into, it also offers interesting opportunities for renovation and personalisation. The layout has been designed for comfortable and functional living. The living-dining room, centred around a charming fireplace, opens directly onto the terrace, creating a warm and inviting atmosphere throughout the year.

The semi-open-plan kitchen adds a sense of spaciousness and continuity to the living area. The property offers three bedrooms, one of them with an en-suite bathroom, as well as a second full bathroom. It also benefits from individual heating, air conditioning, and a parking space in the residents' car park, a particularly valuable feature in this location. Living next to Quevedo Square means enjoying some of Madrid's finest cafés, restaurants, shops, and transport connections. An ideal location for those seeking to combine urban living, convenience, and services without...

Contact us,
we will be happy to assist you,
to offer you more details and information.



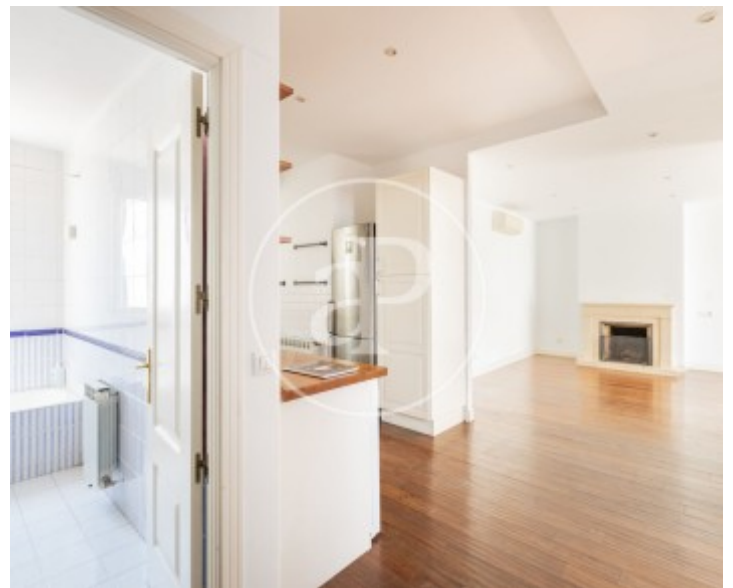
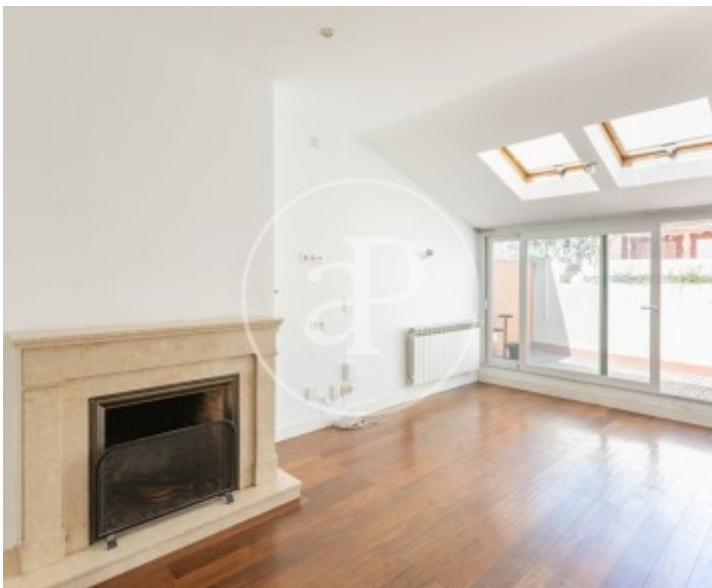
Arapiles, Madrid

REF. VM2606035



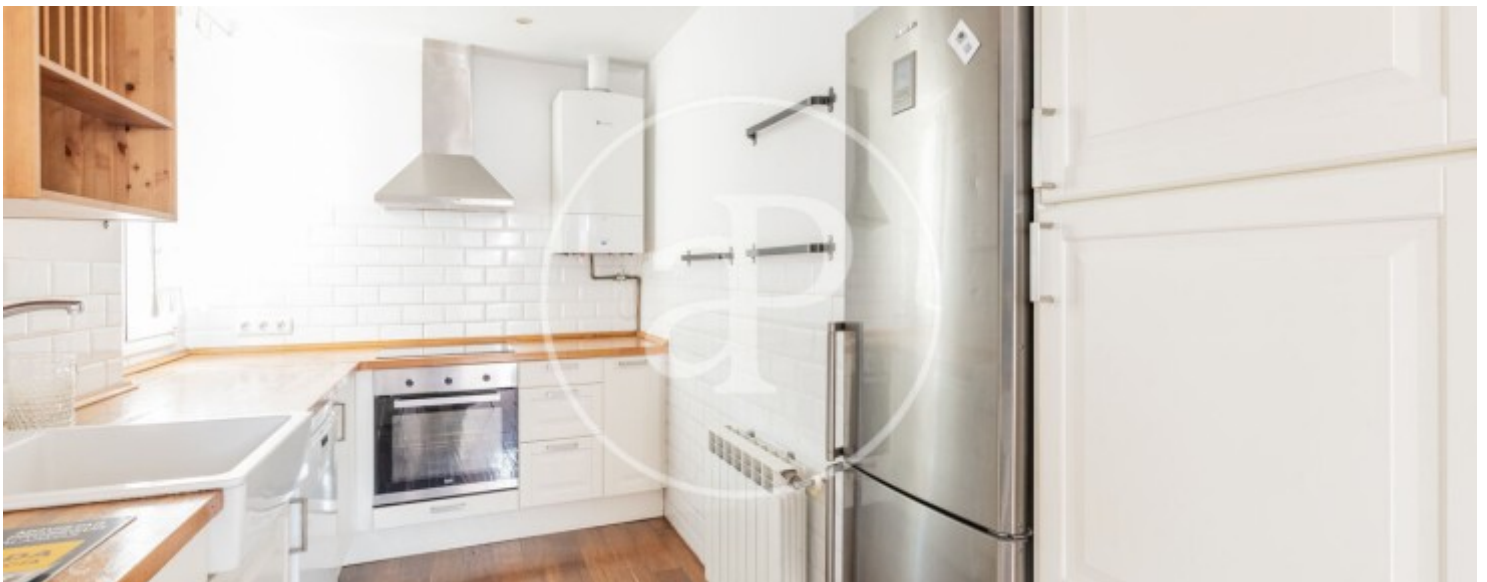
Arapiles, Madrid

REF. VM2606035



Arapiles, Madrid

REF. VM2606035



Arapiles, Madrid

REF. VM2606035



The information about any property is not binding to any offer or contract. Any verbal or written declaration made by aProperties with regards to the value or condition of the property should not be considered accurate or factual. The pictures make reference to some parts of the property at the times that they were taken. The areas, dimensions and distances that are given are approximate and should be checked by the client. The images are computer generated and are just an approximate indication of the real appearance of the property; these may change at any time. The information with regards to the property may also change at any time.

For **more information** or
to make an appointment

apropertiesmadrid@aproperties.es
Tel: 91 800 54 65
www.aproperties.es