

Acacias, Madrid

REF. VM2603056

EXTERIOR PENTHOUSE WITH OPEN TERRACE

Features

- ✓ Views
- ✓ Heating
- ✓ Furnished
- ✓ Terrace
- ✓ Lift
- ✓ Security
- ✓ Concierge

Price

495,000 €

Surface

60 m²

Bedrooms

2

Bathroom

1



Opportunity to purchase a penthouse with a spacious open terrace offering unobstructed views of the city.

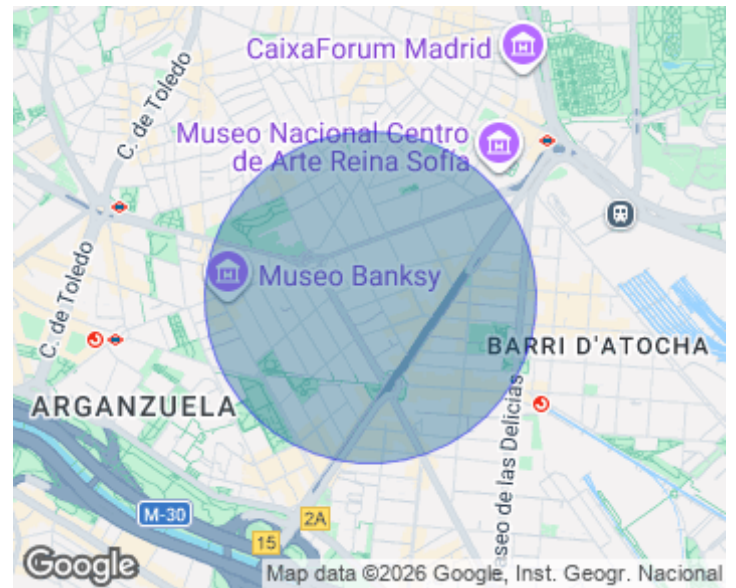
The building features two elevators and a lift for people with reduced mobility, as well as a concierge service. In general, the property is in original condition, not renovated but well maintained. There are four neighbors per floor, and the building has 7 floors and two staircases. This is an exterior property with multiple possibilities. It currently has two bedrooms with partially built-in wardrobes, one of them with access to the impressive terrace of approximately 20 sqm. The second bedroom has a window overlooking the terrace, as does the bathroom serving

the entire property, making them all exterior. In the center of the property, there is the living-dining room, which leads to a fully independent kitchen. Both have windows facing a bright interior patio, as it is a penultimate floor. There is also an entrance hall at the main entrance. It has an east-facing orientation from the terrace. The building dates back to 1969. There are numerous cultural points of interest in the Acacias neighborhood in Madrid. Its proximity to the city center stands out, marked by the Puerta de Toledo roundabout, where one of the oldest markets in Madrid, El...

Contact us,
we will be happy to assist you,
to offer you more details and information.

Acacias, Madrid

REF. VM2603056



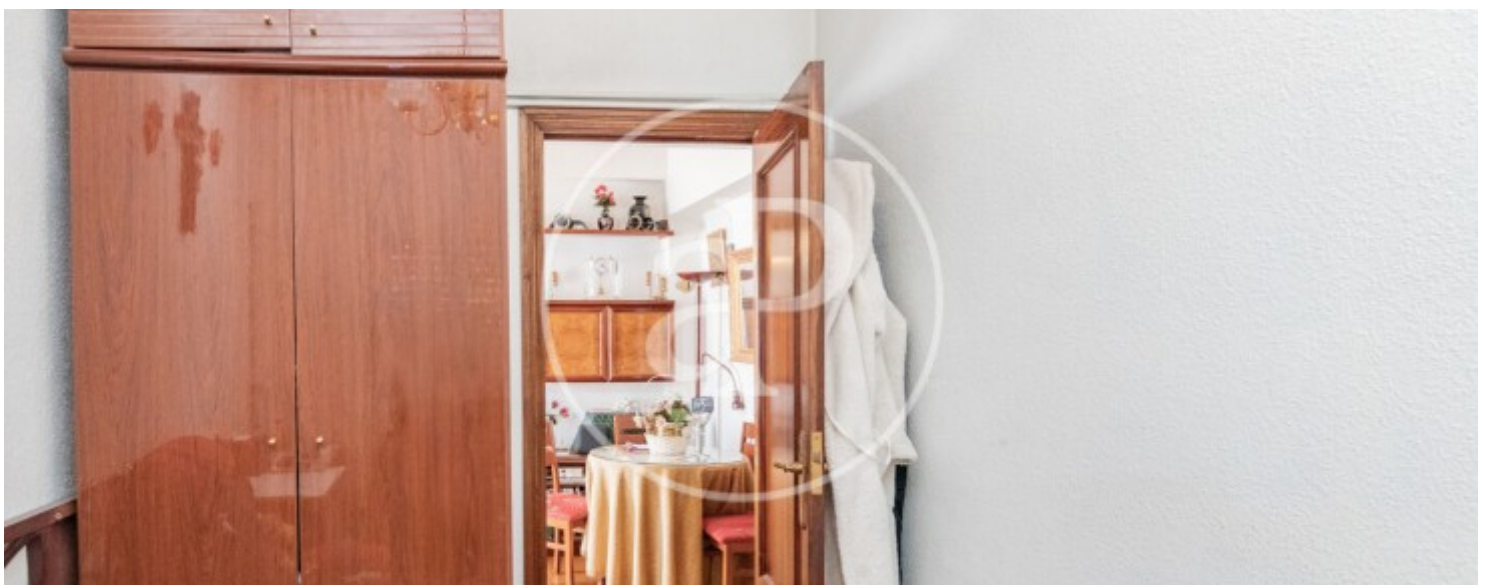
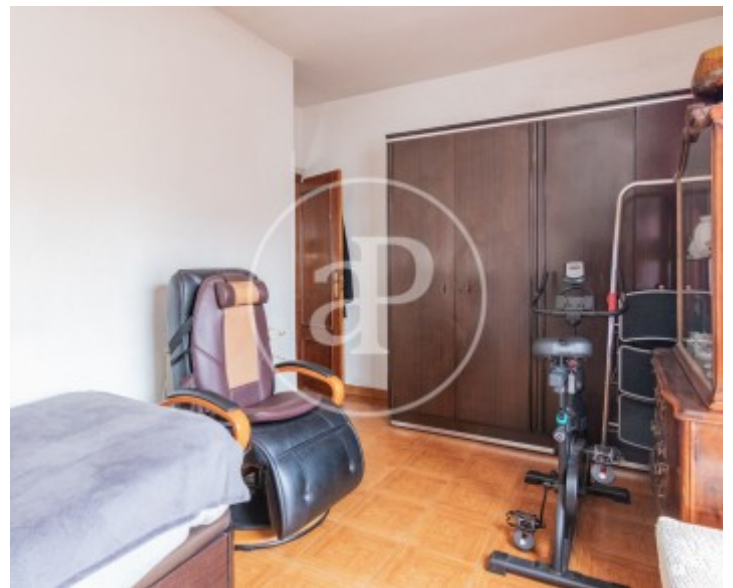
Acacias, Madrid

REF. VM2603056



Acacias, Madrid

REF. VM2603056



Acacias, Madrid

REF. VM2603056



The information about any property is not binding to any offer or contract. Any verbal or written declaration made by aProperties with regards to the value or condition of the property should not be considered accurate or factual. The pictures make reference to some parts of the property at the times that they were taken. The areas, dimensions and distances that are given are approximate and should be checked by the client. The images are computer generated and are just an approximate indication of the real appearance of the property; these may change at any time. The information with regards to the property may also change at any time.

For **more information** or
to make an appointment

apropertiesmadrid@aproperties.es
Tel: 91 800 54 65
www.aproperties.es