

Son Verí, Lluçmajor

REF. VPM2401006

Apartment for sale in Son Verí

Features

- ✓ Heating
- ✓ Boxroom
- ✓ Backyard
- ✓ Has parking
- ✓ Furnished
- ✓ Terrace
- ✓ Pool

Surface

115 m²

Bedrooms

2

Bathrooms

2

Price

525,000 €



Beautiful apartment in first sea line in Son Verí, Majorca.

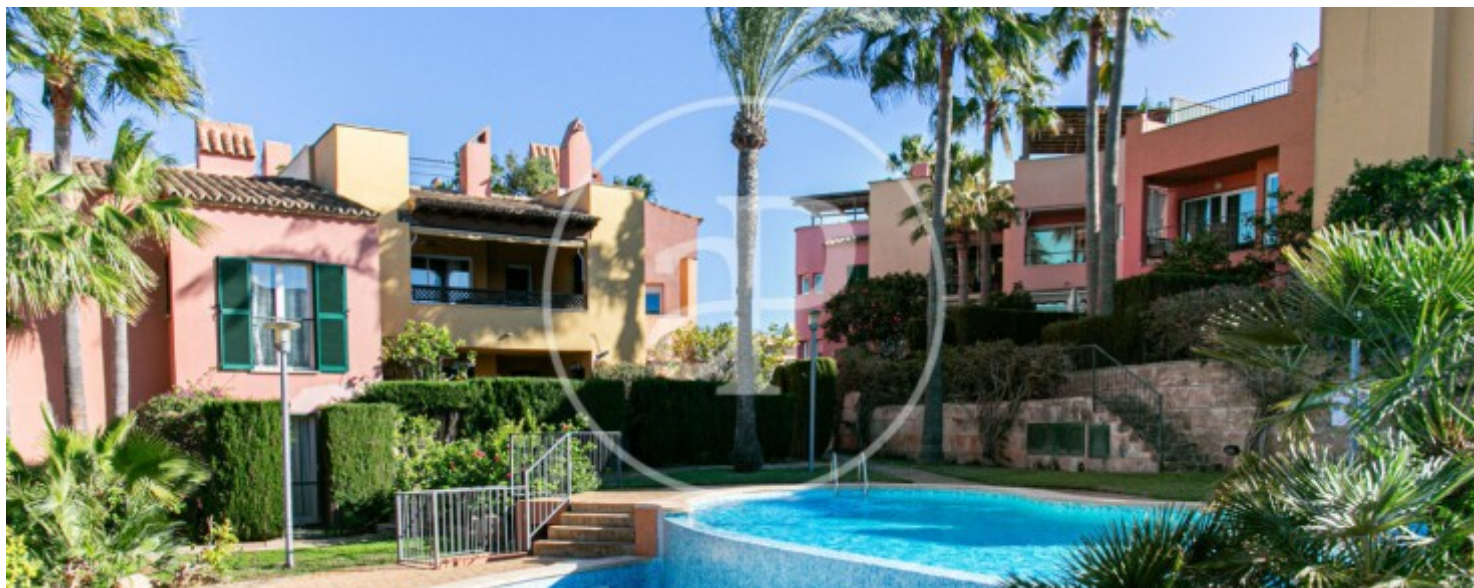
With a bright living and dining room that connects to the terrace, a fully equipped kitchen and two bedrooms, the property offers modern comforts in a coastal setting. The master bedroom features an en suite bathroom, which includes a walk-in shower and a bathtub, providing both functionality and comfort. The second double bedroom and a second bathroom complete with walk-in shower offer versatility and practicality. The jewel in the crown is the spacious terrace, from which partial views of the sea and the landscaped areas with communal swimming pools can be enjoyed. The connection with

nature and the marine environment becomes a daily experience. Among the amenities, the property has central heating with hot water radiators, air conditioning, double glazed windows, a generous parking space and a 9m2 storage room, providing functionality and additional space. Living in front of the sea translates into a unique lifestyle. The sea breeze, the sound of the waves and the unforgettable sunsets offer an enveloping and relaxing experience. Can you imagine living here?

Contact us,
we will be happy to assist you,
to offer you more details and information.

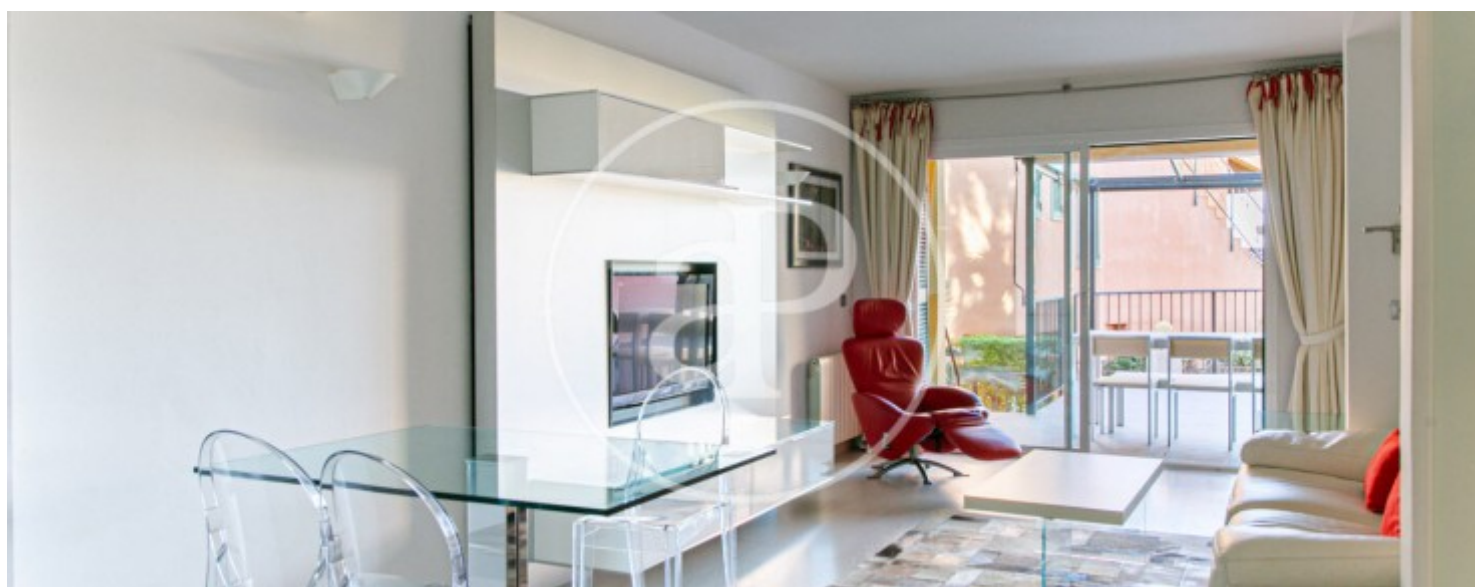
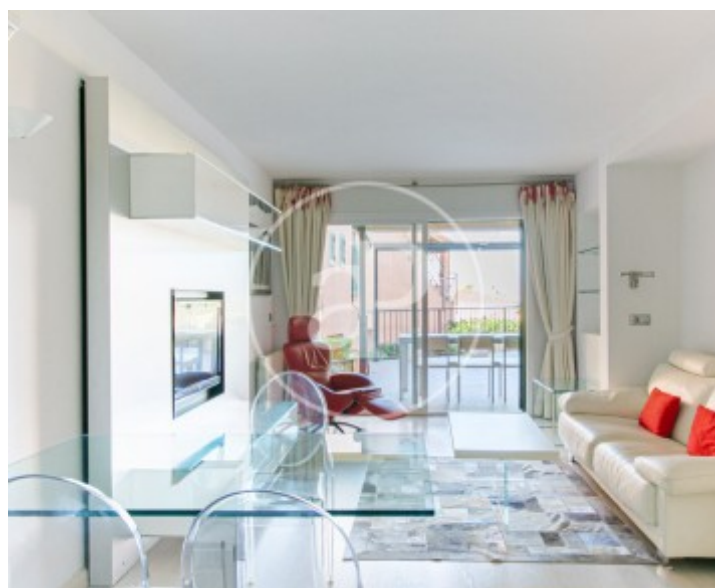
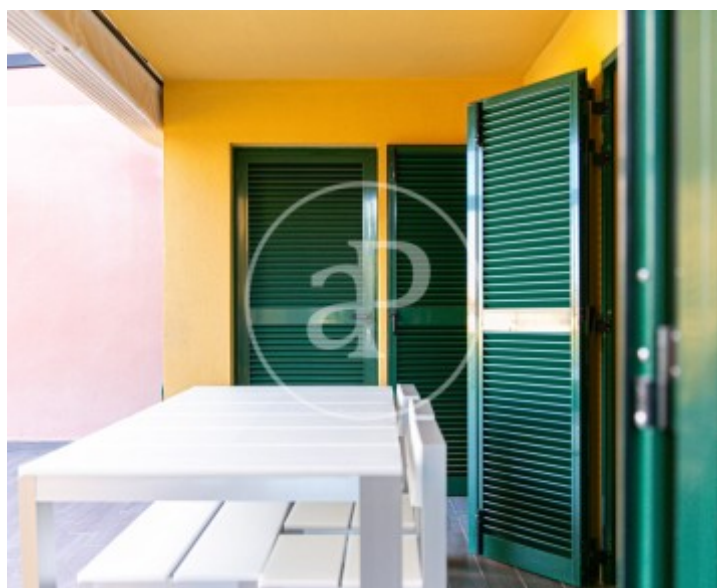
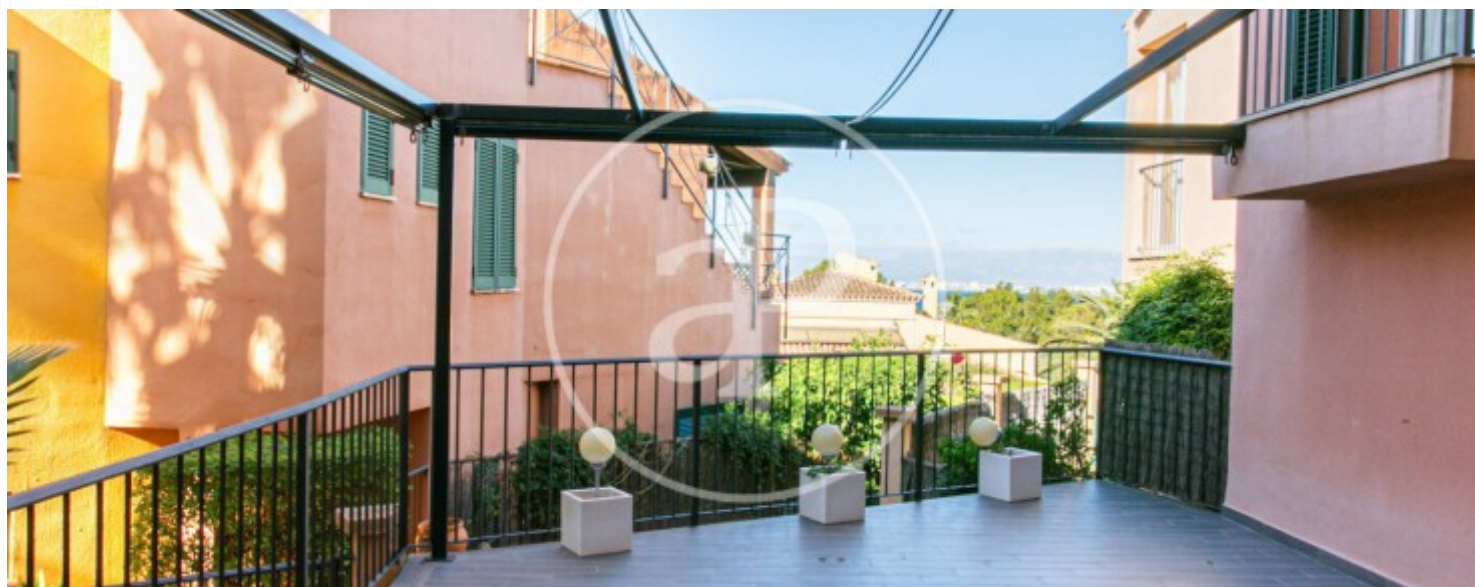
Son Verí, Llucmajor

REF. VPM2401006



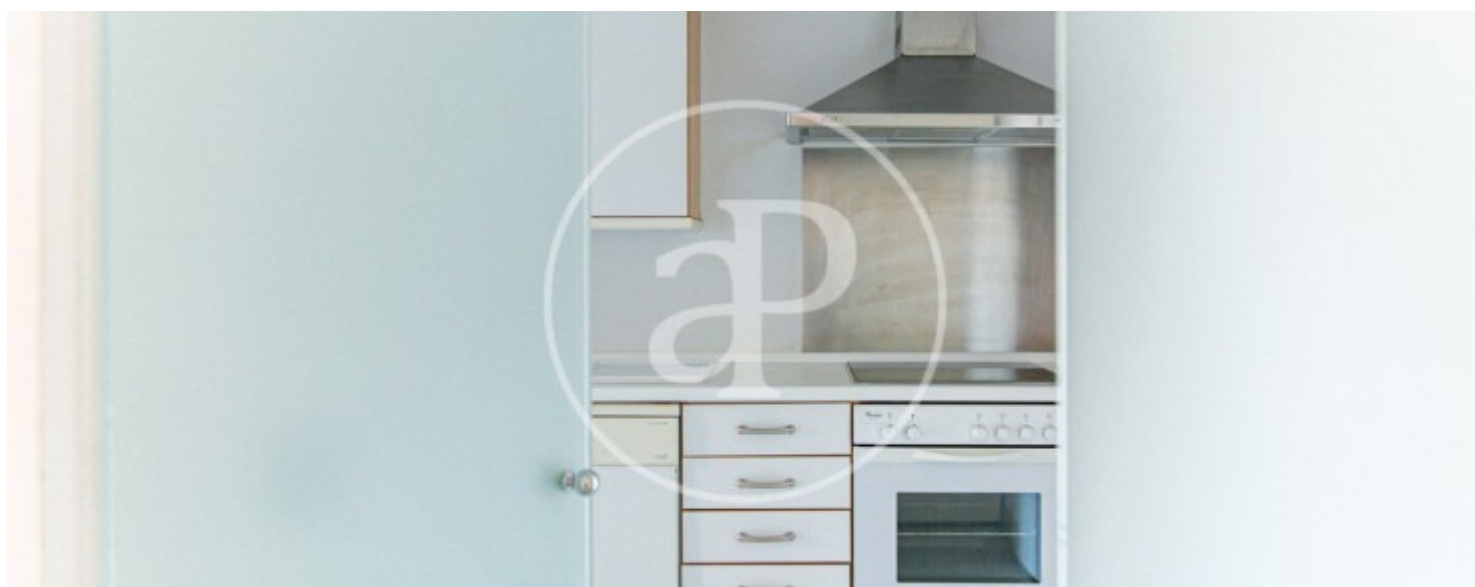
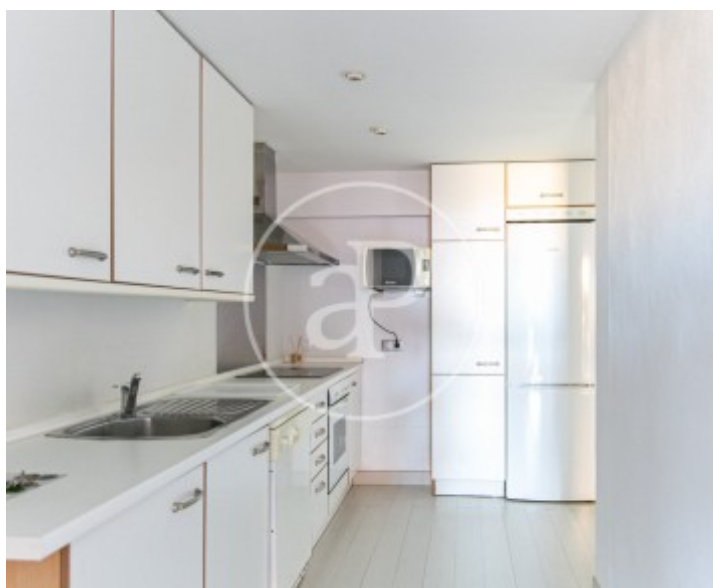
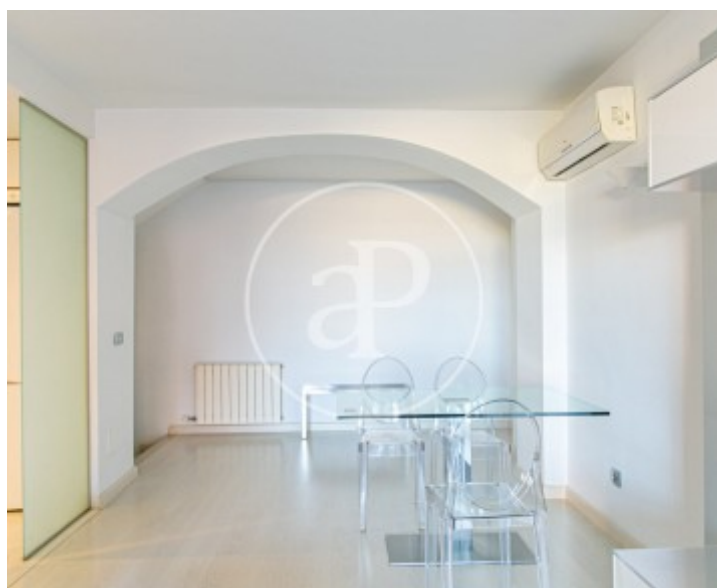
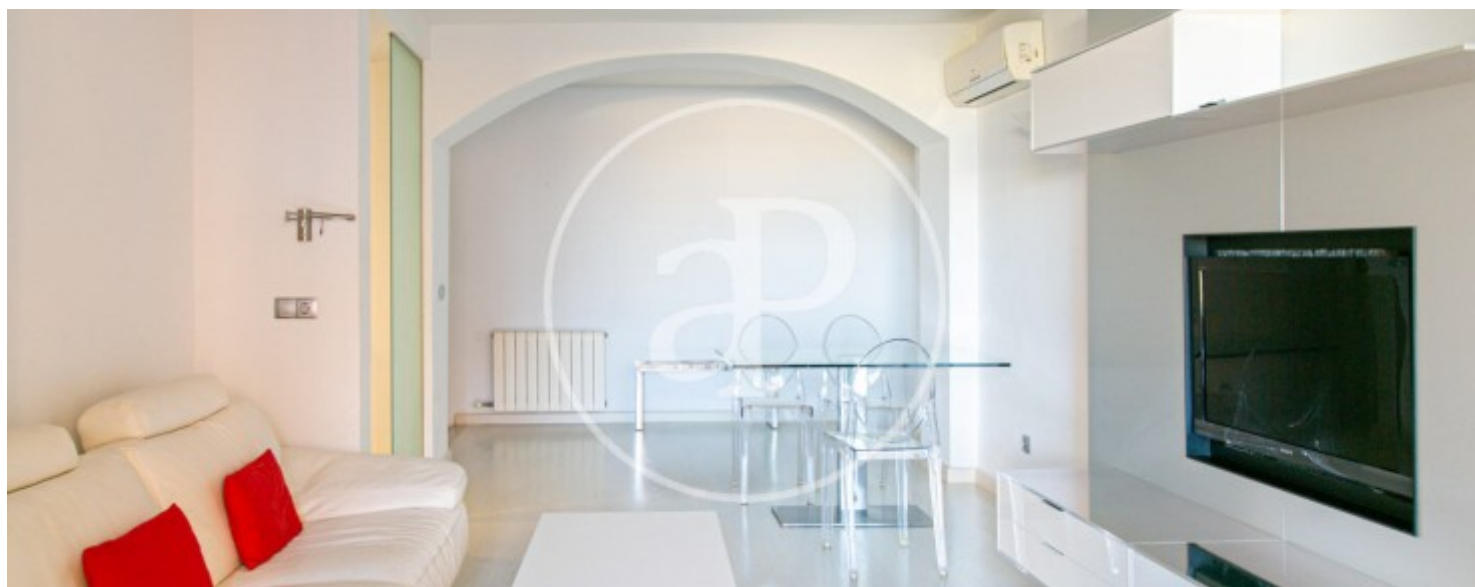
Son Verí, Lluçmajor

REF. VPM2401006



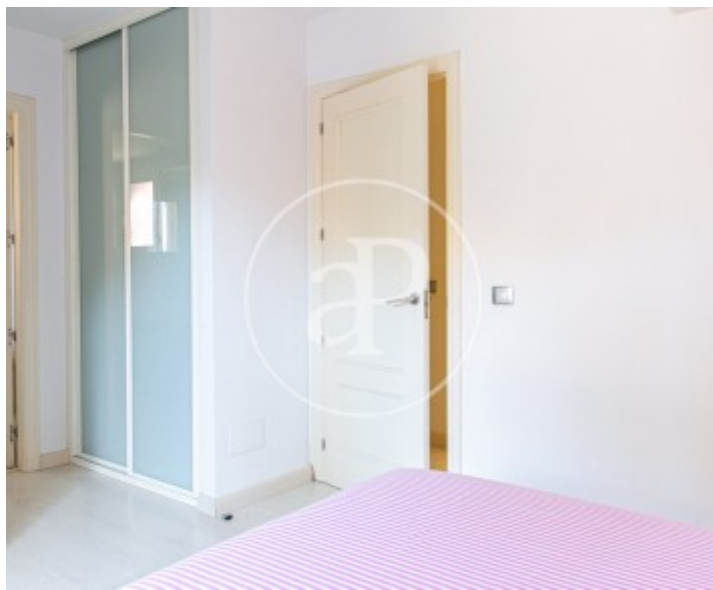
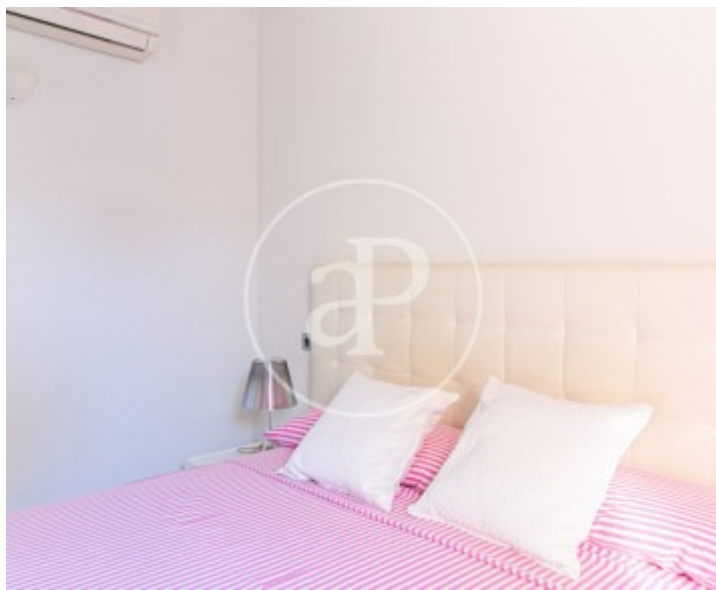
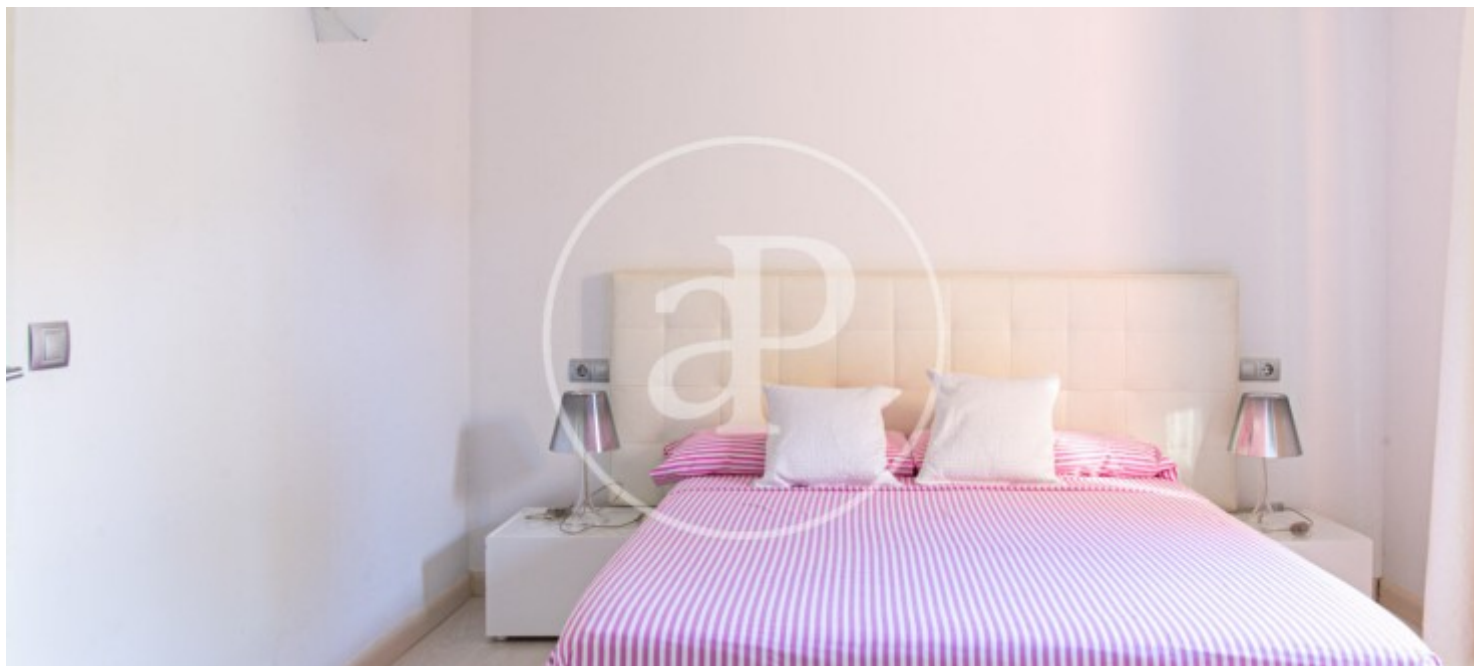
Son Verí, Lluçmajor

REF. VPM2401006



Son Verí, Llucmajor

REF. VPM2401006



The information about any property is not binding to any offer or contract. Any verbal or written declaration made by aProperties with regards to the value or condition of the property should not be considered accurate or factual. The pictures make reference to some parts of the property at the times that they were taken. The areas, dimensions and distances that are given are approximate and should be checked by the client. The images are computer generated and are just an approximate indication of the real appearance of the property; these may change at any time. The information with regards to the property may also change at any time.

For **more information** or
to make an appointment

apropertiespalma@aproperties.es
Tel: 871 16 01 60
www.aproperties.es