



Son Verí Nou, Lluçmajor

REF. VPM2211047

# Designer villa on the seafront

## Features

- ✓ Views
- ✓ Heating
- ✓ Furnished
- ✓ AACC
- ✓ Terrace
- ✓ Backyard
- ✓ Pool
- ✓ Gym
- ✓ Lift
- ✓ Security
- ✓ Has parking

Surface

**745 m<sup>2</sup>**

Bedrooms

**5**

Bathrooms

**4**



Price

**Price upon request**

## Impressive villa designed by a well known Spanish architect.

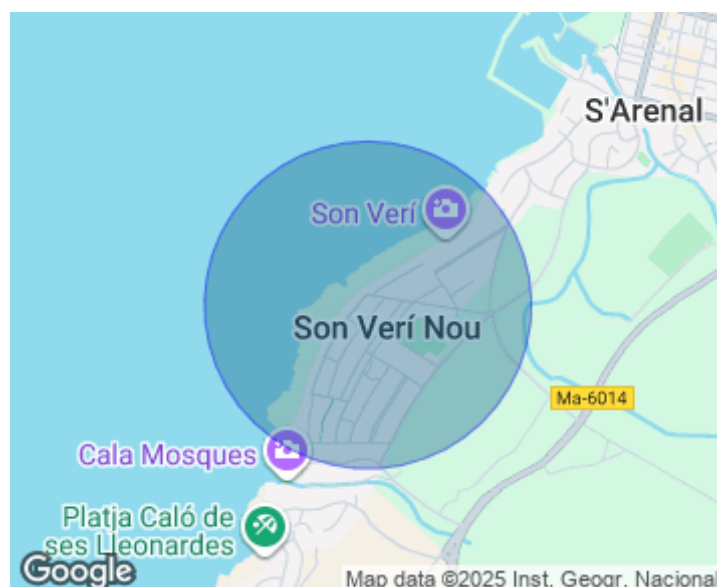
With a dreamlike privacy. Designed with large diaphanous rooms where you can appreciate all the spaciousness of the house. An impressive staircase and large windows where you can enjoy the sea views over the Bay of Palma. The beautiful villa offers a total of 4 bedrooms, each with its own bathroom en suite. A beautiful spacious kitchen, living room, dining room and TV corner. The large removable wooden panels that separate the living room, dining room and kitchen from each other leave the semi arched concrete ceiling visible and give the impression of being on a boat. The first floor is fully glazed, giving

even more space. In the basement there is enough space for 8 cars, as well as a machine room, a small wine cellar and a laundry room. There is a lift and a large window. The 70sqm swimming pool with jacuzzi is salt water. Further features include; central heating, air conditioning, fitted wardrobes, travertine marble, cherry wood, automatic irrigation and direct access to the pedestrian promenade. This villa is located in Son Verí Nou. In a privileged enclave with all the services offered by the area and with its coves of crystalline water surrounding it. 10 minutes from the...

**Contact us,**  
we will be happy to assist you,  
to offer you more details and information.

Son Verí Nou, Lluçmajor

REF. VPM2211047





Son Verí Nou, Lluçmajor

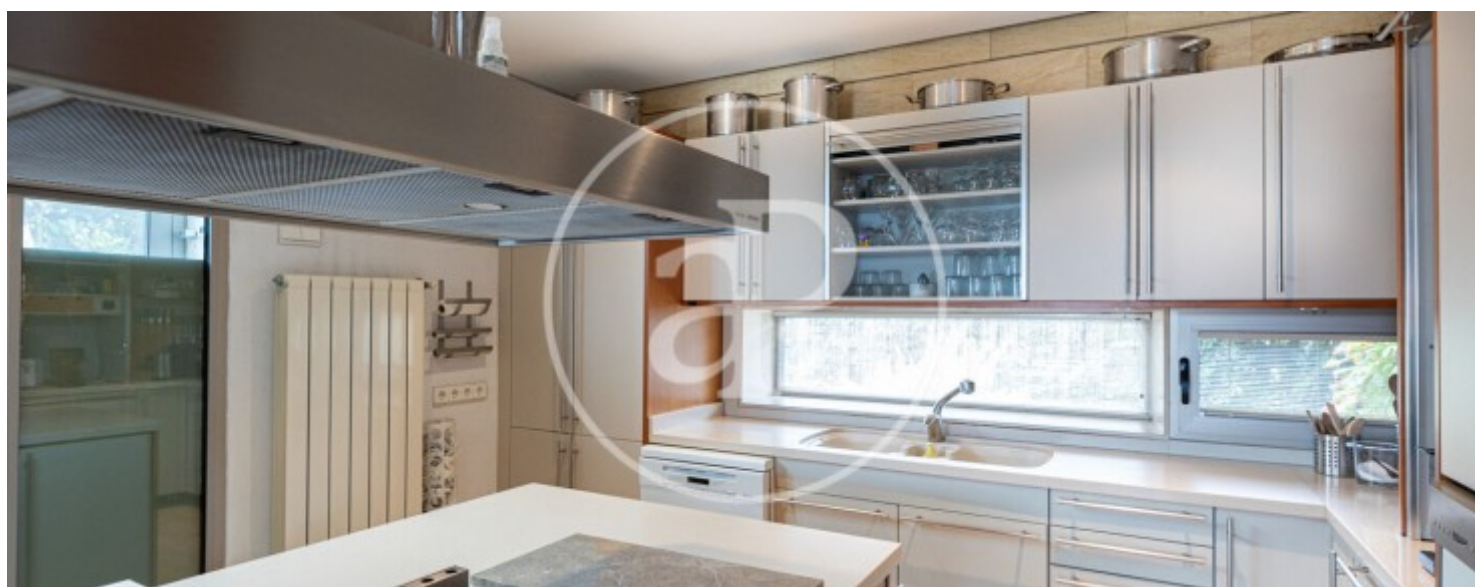
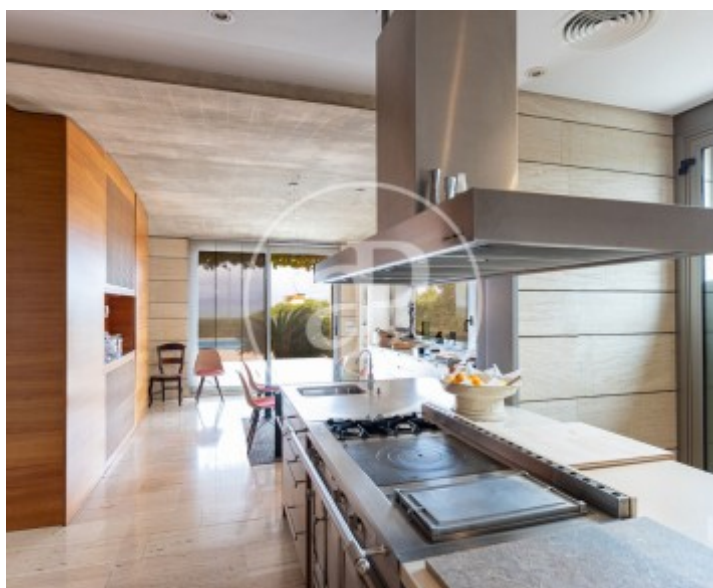
REF. VPM2211047





Son Verí Nou, Lluçmajor

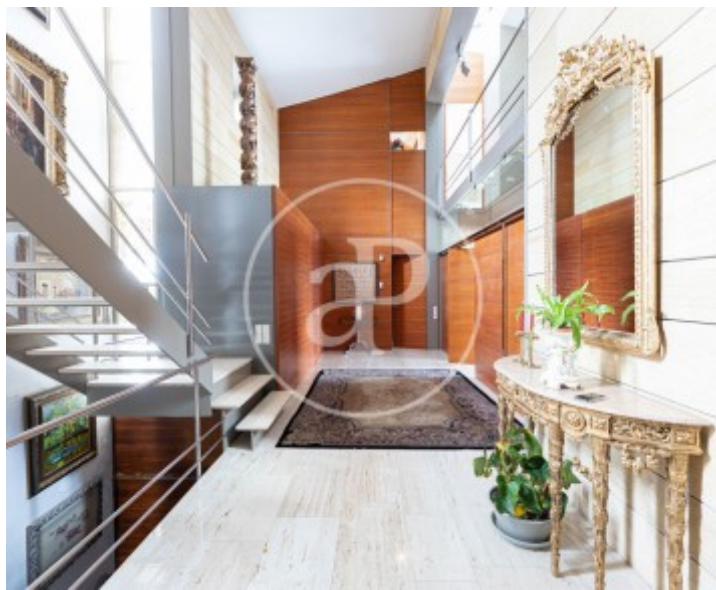
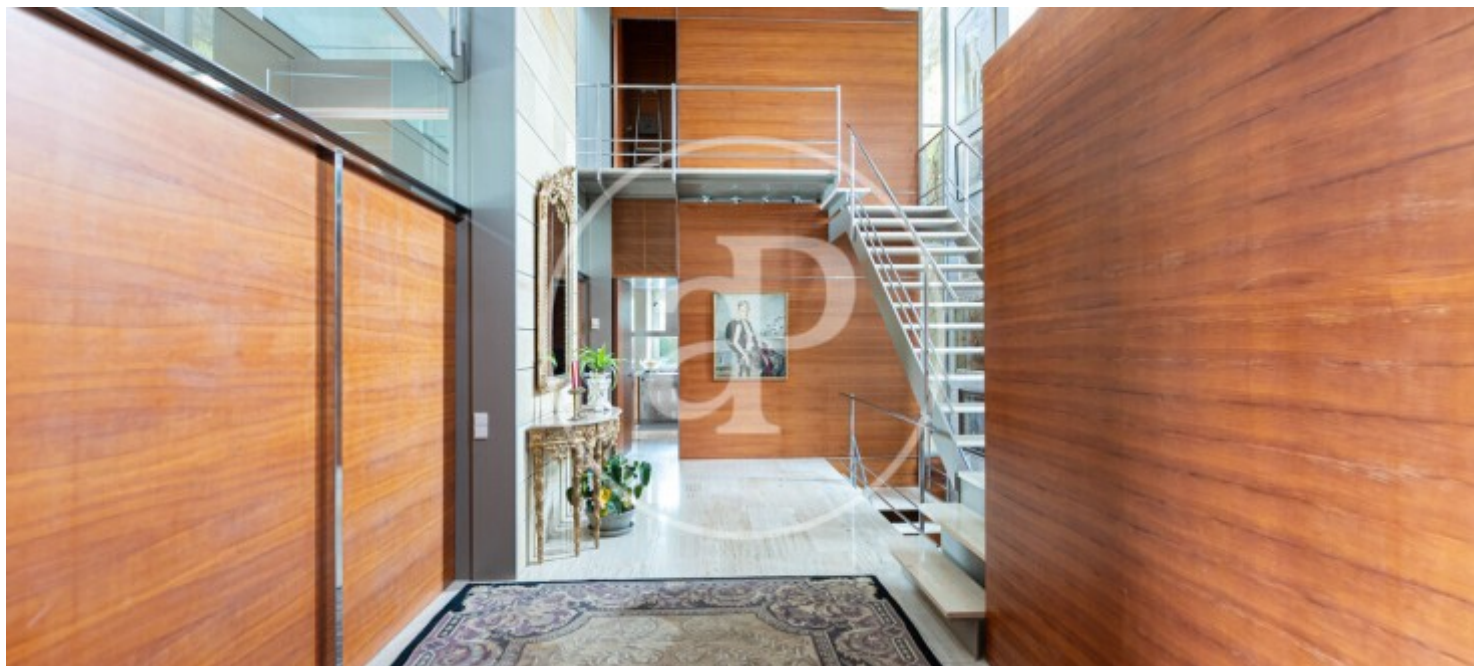
REF. VPM2211047





Son Verí Nou, Lluçmajor

REF. VPM2211047



The information about any property is not binding to any offer or contract. Any verbal or written declaration made by aProperties with regards to the value or condition of the property should not be considered accurate or factual. The pictures make reference to some parts of the property at the times that they were taken. The areas, dimensions and distances that are given are approximate and should be checked by the client. The images are computer generated and are just an approximate indication of the real appearance of the property; these may change at any time. The information with regards to the property may also change at any time.

For **more information** or  
to make an appointment

[apropertiespalma@aproperties.es](mailto:apropertiespalma@aproperties.es)  
Tel: 871 16 01 60  
[www.aproperties.es](http://www.aproperties.es)