

Son Verí Nou, Lluçmajor

REF. VPM2111004

Villa by the sea for sale in Son Verí Nou

Features

- ✓ Views
- ✓ Furnished
- ✓ AACC
- ✓ Backyard
- ✓ Security
- ✓ Heating
- ✓ Boxroom
- ✓ Terrace
- ✓ Pool
- ✓ Has parking

Surface
500 m²

Bedrooms
8

Bathrooms
8

Price
1,250,000 €



Nice villa with all kinds of amenities just a few minutes from the sea and with views of the whole bay of Palma.

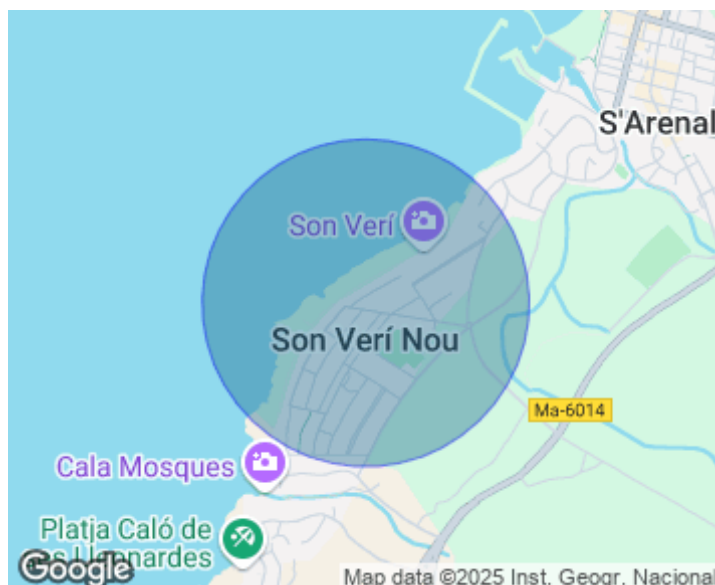
Very sunny, with a swimming pool and a garden with trees, the south-facing villa on three floors has three entrances: two independent ones and the access to the urbanization, which boasts beautiful gardens and several swimming pools. In approx. 500 m² living area, the villa has a living room with access to the pool and the garden with trees, a kitchen equipped with new appliances and a large pantry, a double bedroom with an en-suite bathroom, fitted wardrobes and a toilet on the ground floor. On the first floor, there are five bedrooms with their

en-suite bathrooms –the main one features two dressing rooms–, a living room and a library with a beautiful ceiling with wooden beams and wonderful views. The upper floor allocates the solarium with spectacular panoramic views. On the lower floor there are two more bedrooms with two bathrooms, a storage room and a garage for four cars. The equipment features armored doors in each of the rooms, electric shutters, individual & reversible air conditioning, gas-electric boiler, stoneware floors and Climalit windows. The property is a few steps away from the sea and the beautiful...

Contact us,
we will be happy to assist you,
to offer you more details and information.

Son Verí Nou, Llucmajor

REF. VPM2111004



Son Verí Nou, Lluçmajor

REF. VPM2111004



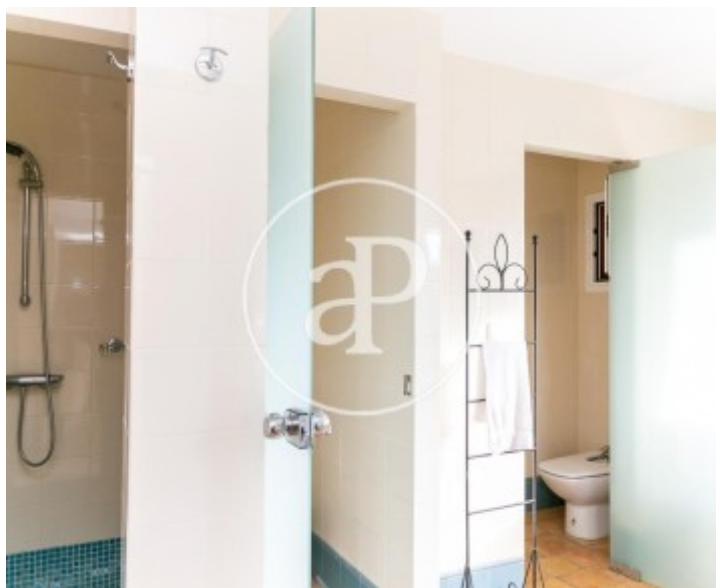
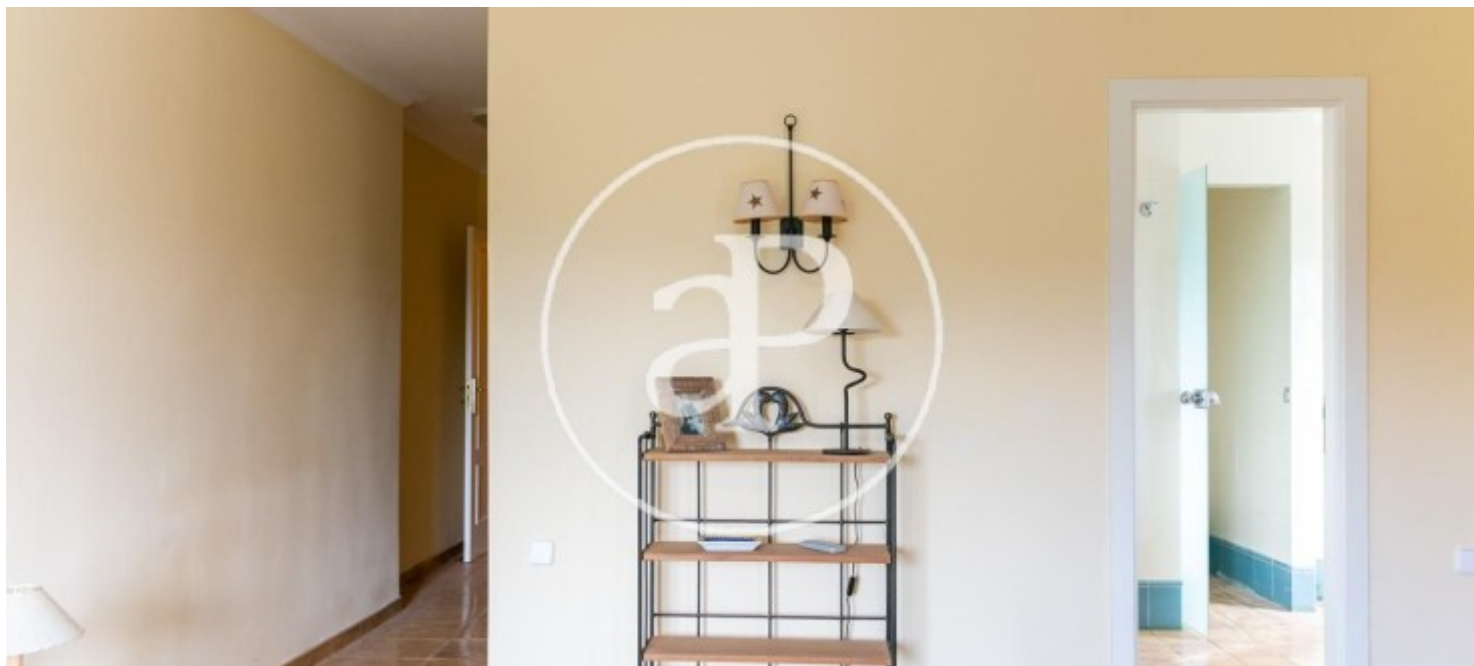
Son Verí Nou, Lluçmajor

REF. VPM2111004



Son Verí Nou, Lluçmajor

REF. VPM2111004



The information about any property is not binding to any offer or contract. Any verbal or written declaration made by aProperties with regards to the value or condition of the property should not be considered accurate or factual. The pictures make reference to some parts of the property at the times that they were taken. The areas, dimensions and distances that are given are approximate and should be checked by the client. The images are computer generated and are just an approximate indication of the real appearance of the property; these may change at any time. The information with regards to the property may also change at any time.

For **more information** or
to make an appointment

apropertiespalma@aproperties.es
Tel: 871 16 01 60
www.aproperties.es