



Son Verí Nou, Lluçmajor

REF. VPM2502002

Very bright villa for sale in Son Veri Nou

Features

- ✓ Heating
- ✓ AACC
- ✓ Backyard
- ✓ Boxroom
- ✓ Terrace
- ✓ Has parking

Surface

230 m²

Bedrooms

5

Bathrooms

4

Price

770,000 €



Nice semi-detached house ideal for those looking for a fabulous location and very close to the sea.

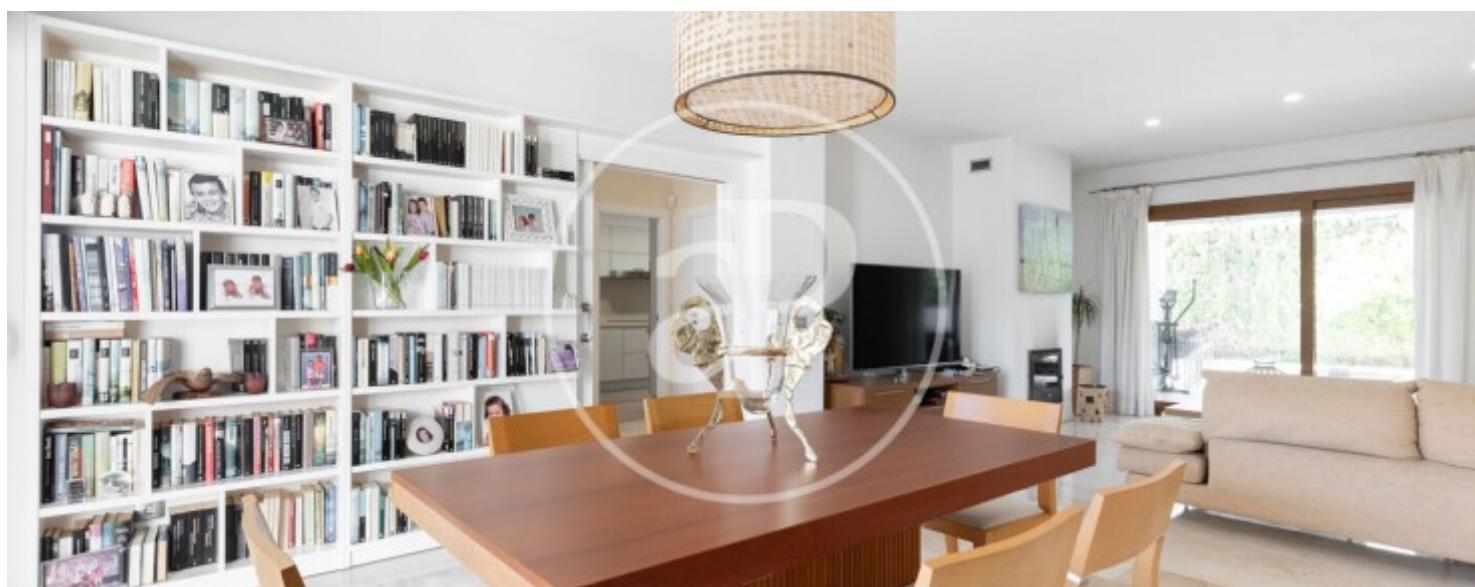
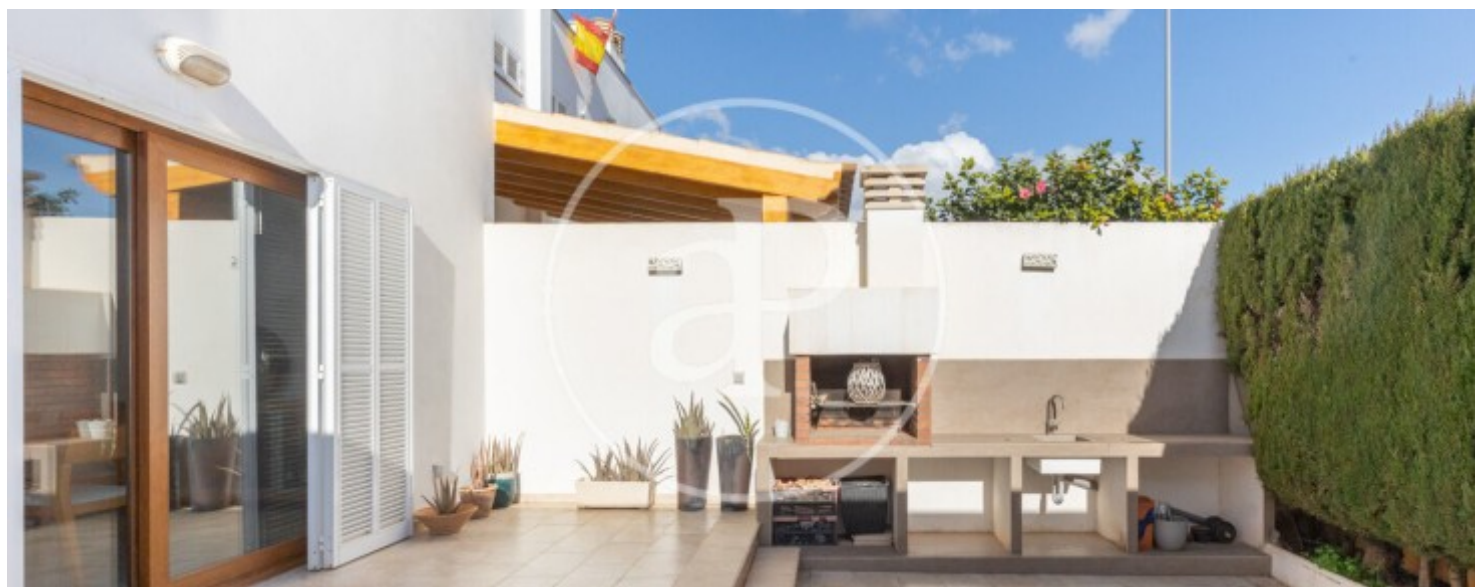
The house is composed of two floors, garden and entrance porch. On the first floor, a nice hall invites us to a spacious living room, guest toilet, bedroom with bathroom en suite and a fully equipped kitchen. Both the kitchen and the living room are composed of large windows that invite us to the garden. The second floor consists of 3 double bedrooms and two bathrooms. In the master bedroom there is a dressing room and en suite bathroom with access to the terrace. Its features are, large entrance porch and barbecue area, second rear covered terrace, fireplace,

air conditioning and parking. Located in an exceptional area. Just minutes from the clinic are veri and private school. Surrounded by all the services offered by the area such as public transport, restaurants, golf course and supermarkets. Very close to the beaches and a promenade that connects us with all the beaches until you reach the city of Palma.

Contact us,
we will be happy to assist you,
to offer you more details and information.

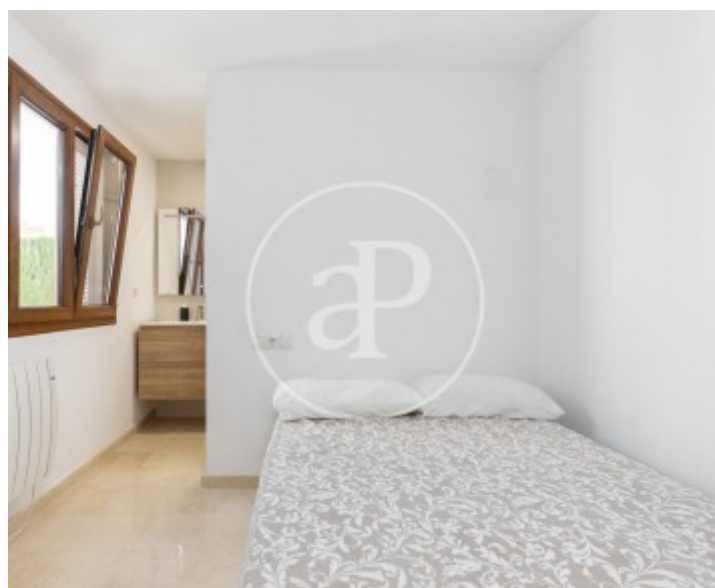
Son Verí Nou, Lluçmajor

REF. VPM2502002



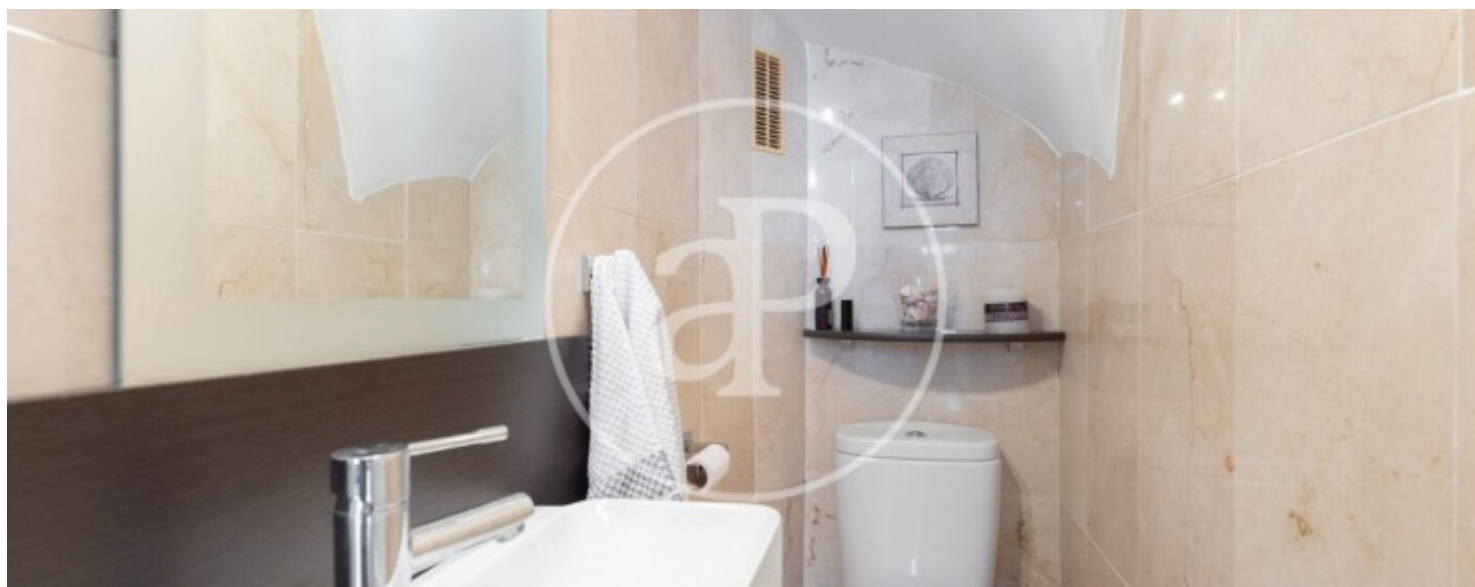
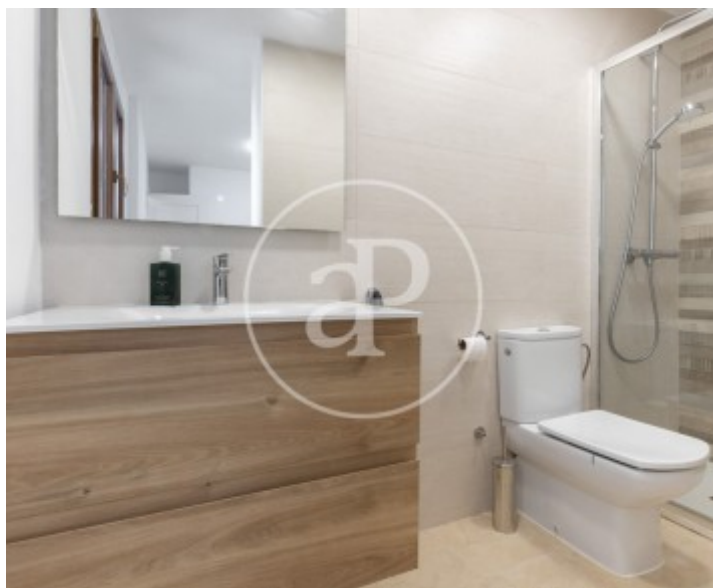
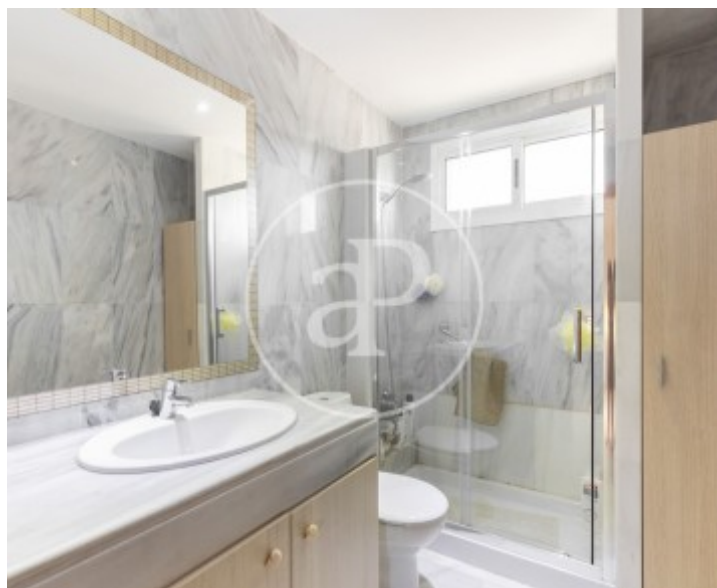
Son Verí Nou, Lluçmajor

REF. VPM2502002



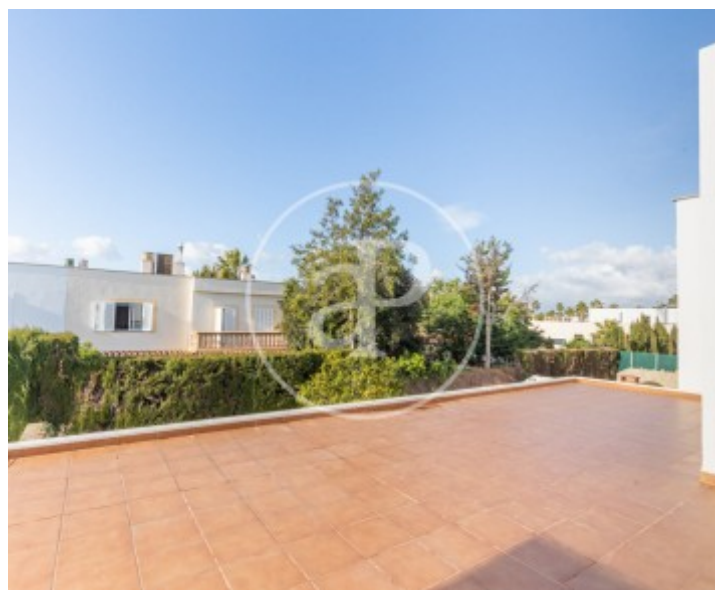
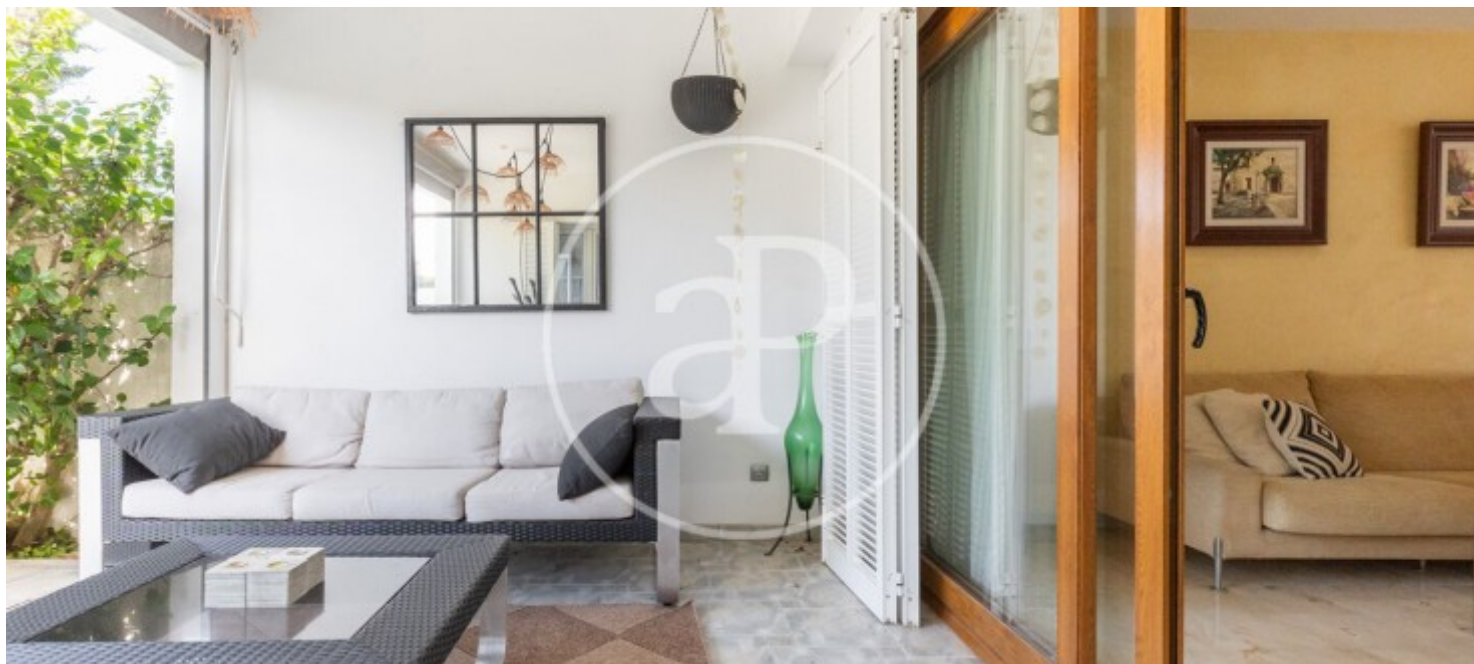
Son Verí Nou, Lluçmajor

REF. VPM2502002



Son Verí Nou, Lluçmajor

REF. VPM2502002



The information about any property is not binding to any offer or contract. Any verbal or written declaration made by aProperties with regards to the value or condition of the property should not be considered accurate or factual. The pictures make reference to some parts of the property at the times that they were taken. The areas, dimensions and distances that are given are approximate and should be checked by the client. The images are computer generated and are just an approximate indication of the real appearance of the property; these may change at any time. The information with regards to the property may also change at any time.

For **more information** or
to make an appointment

apropertiespalma@aproperties.es
Tel: 871 16 01 60
www.aproperties.es