

Ses Palmeres, Llucmajor

REF. VPM2308002



Villa for sale with swimming pool in Ses Palmeres

Features

- ✓ Views
- ✓ Heating
- ✓ Boxroom
- ✓ AACC
- ✓ Terrace
- ✓ Backyard
- ✓ Pool
- ✓ Has parking

Price

965,000 €

Surface

456 m²

Bedrooms

6

Bathrooms

4



Magnificent villa with lots of charm for sale in the southwest of Mallorca.

The house is distributed over two floors. On the ground floor we find a spacious and cozy living room with a nice fireplace, separate kitchen with unobstructed views of the garden. Three bedrooms and two bathrooms, one of them with an en suite bathroom. An L-shaped staircase leads to the first floor. Designed for relaxation and comfort. It has a very precise living room with panoramic views. The master bedroom with a beautiful dressing room and en suite bathroom. And two bedrooms sharing a bathroom. The whole floor is very bright and pleasant. Features, double glazed windows with aluminium

shutters, mosquito nets, central heating with radiators (aerothermic), air conditioning hot-cold pump, optical internet, alarm system, two big porches, storage room, swimming pool and a nice garden. It is located in Ses Palmeres, an ideal area for families with children. Very close to all the services offered in the area. At 10 minutes from the airport and 20 minutes from the city of Palma. Very close to Maioris golf course and only a few minutes from Cala Blava.

Contact us,
we will be happy to assist you,
to offer you more details and information.

Ses Palmeres, Llucmajor

REF. VPM2308002



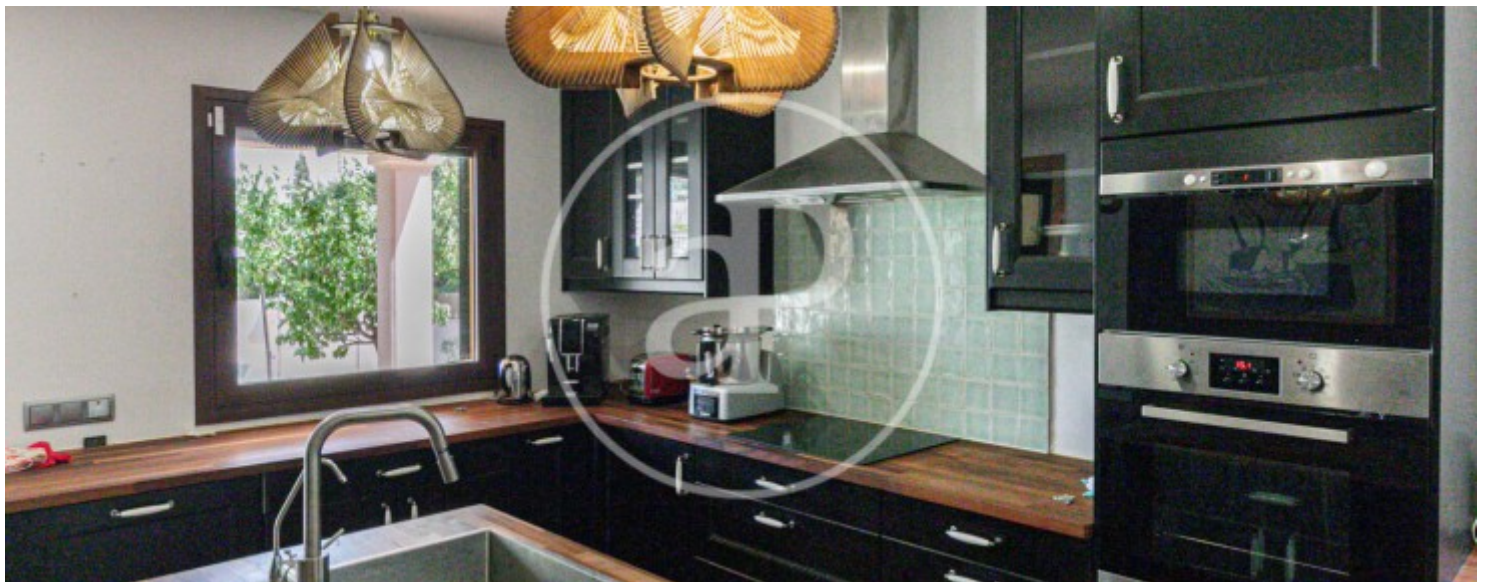
Ses Palmeres, Llucmajor

REF. VPM2308002



Ses Palmeres, Llucmajor

REF. VPM2308002



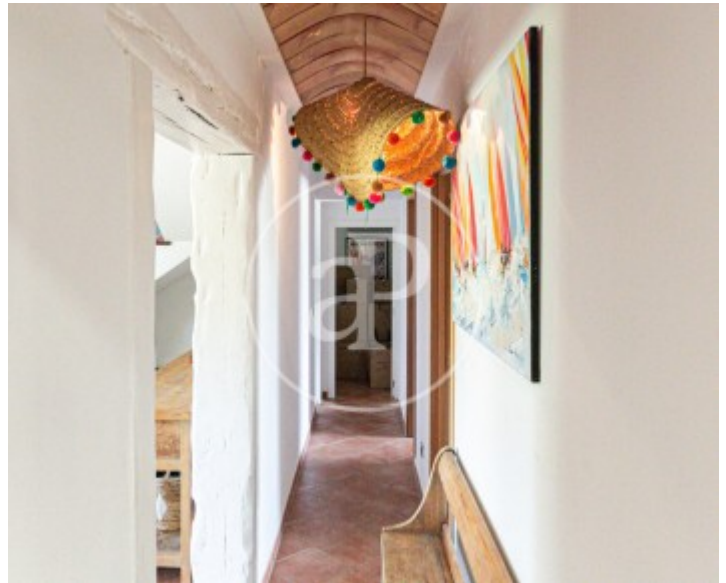
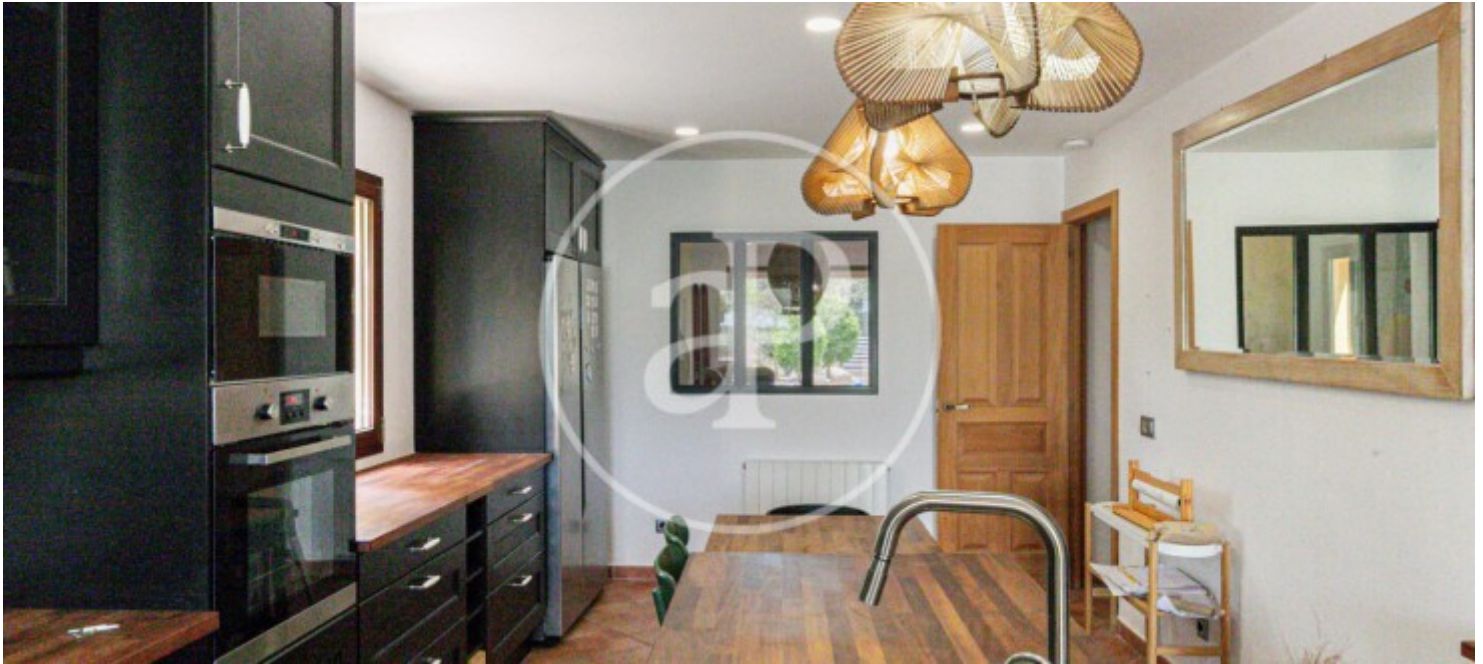


APROPERTIES
REAL ESTATE

Calle Unió 9
07001 Palma
T. 871 16 01 60
www.aproperties.es

Ses Palmeres, Llucmajor

REF. VPM2308002



The information about any property is not binding to any offer or contract. Any verbal or written declaration made by aProperties with regards to the value or condition of the property should not be considered accurate or factual. The pictures make reference to some parts of the property at the times that they were taken. The areas, dimensions and distances that are given are approximate and should be checked by the client. The images are computer generated and are just an approximate indication of the real appearance of the property; these may change at any time. The information with regards to the property may also change at any time.



For **more information** or
to make an appointment

apropertiespalma@aproperties.es
Tel: 871 16 01 60
www.aproperties.es