

S'Arenal, Llucmajor

REF. APM2408004

Apartment for rent in Palma

Features

- ✓ Views
- ✓ Furnished
- ✓ AACC
- ✓ Terrace

Surface

96 m²

Bedrooms

3

Bathroom

1

Price

1,550 €



AVAILABLE FOR LONG AND SHORT STAY (Minimum 6 months) We present this beautiful flat with views, located in the beautiful area of Arenal.

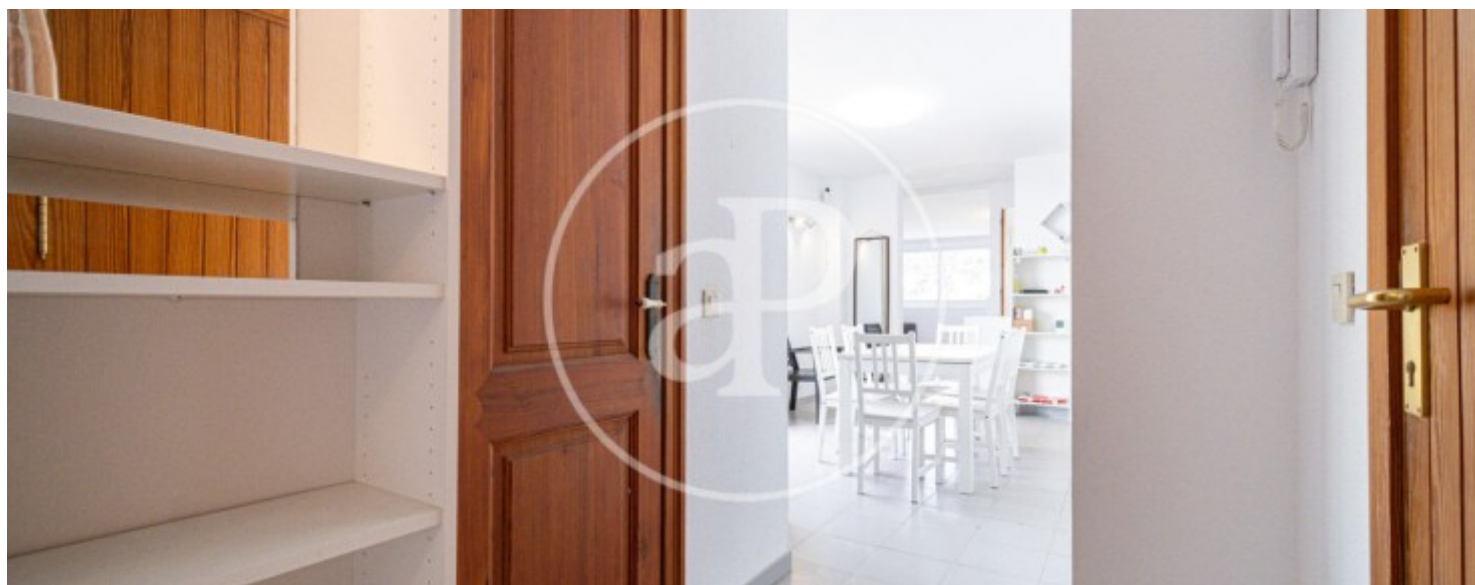
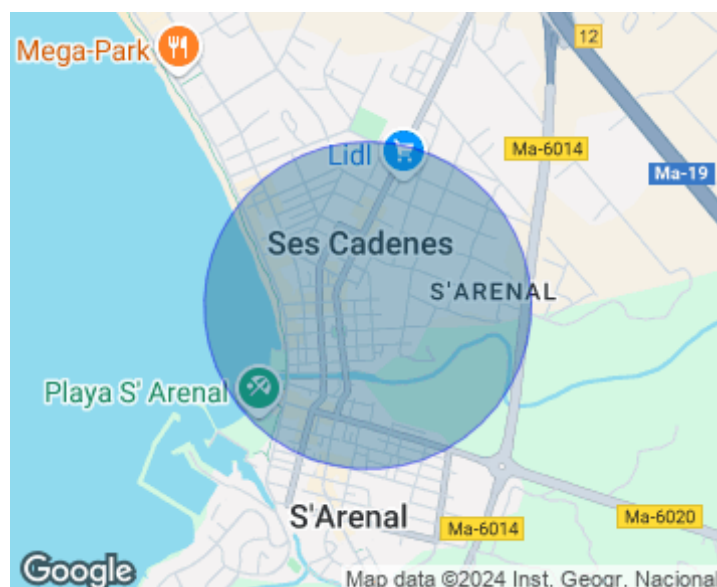
This flat offers a perfect combination of comfort, space and stunning views, ideal for both long and short stays. On entering the property, you will be greeted by a very spacious and bright living room, perfect for relaxing and enjoying your free time. The living room includes a large dining room, ideal for meals with family and friends. The kitchen, fully equipped, will allow you to prepare your meals in total comfort. The flat has three spacious bedrooms, each equipped with a comfortable double bed. These rooms have been

designed to offer maximum comfort and space. In addition, there is a complete, modern and functional bathroom, which meets all your needs. One of the outstanding features of this flat is the spacious terrace of 54 sqm. The terrace is the perfect place to enjoy the fresh air, whether sunbathing, reading a book or organising a barbecue in the specially prepared area. The location of the flat is ideal, as it is close to supermarkets, restaurants and the Arenal beach. This will allow you to have quick and easy access to all the services and amenities you may need during your stay. This flat is...

Contact us,
we will be happy to assist you,
to offer you more details and information.

S'Arenal, Llucmajor

REF. APM2408004



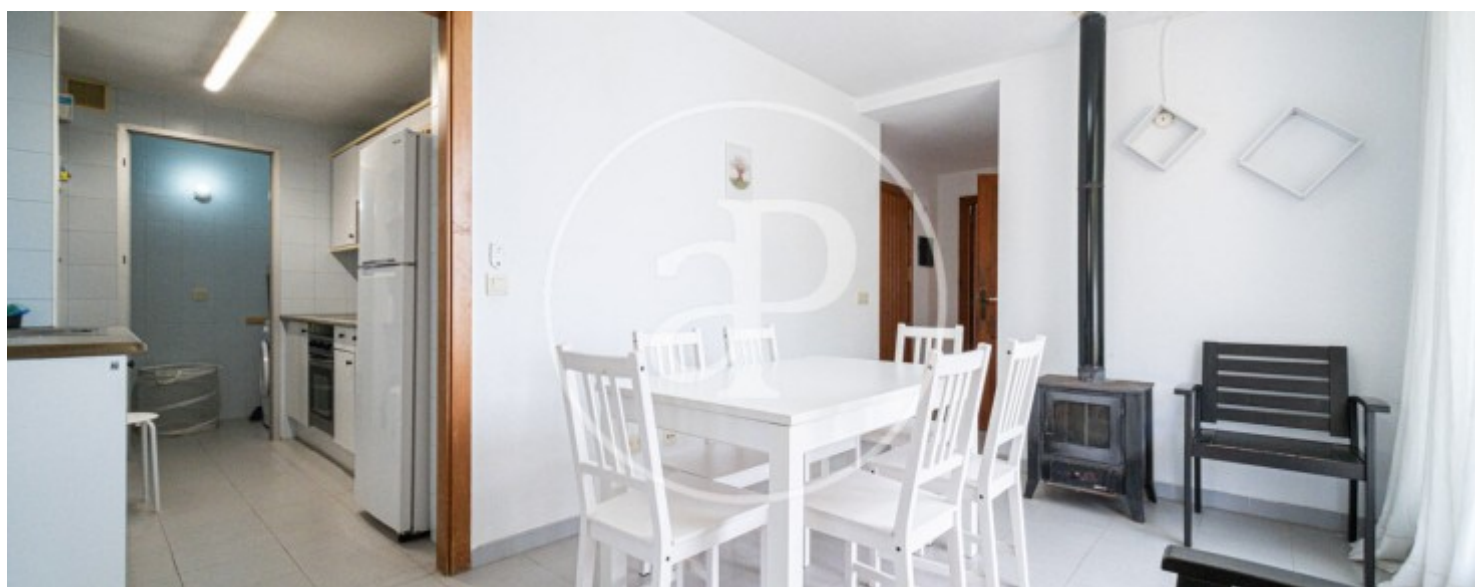
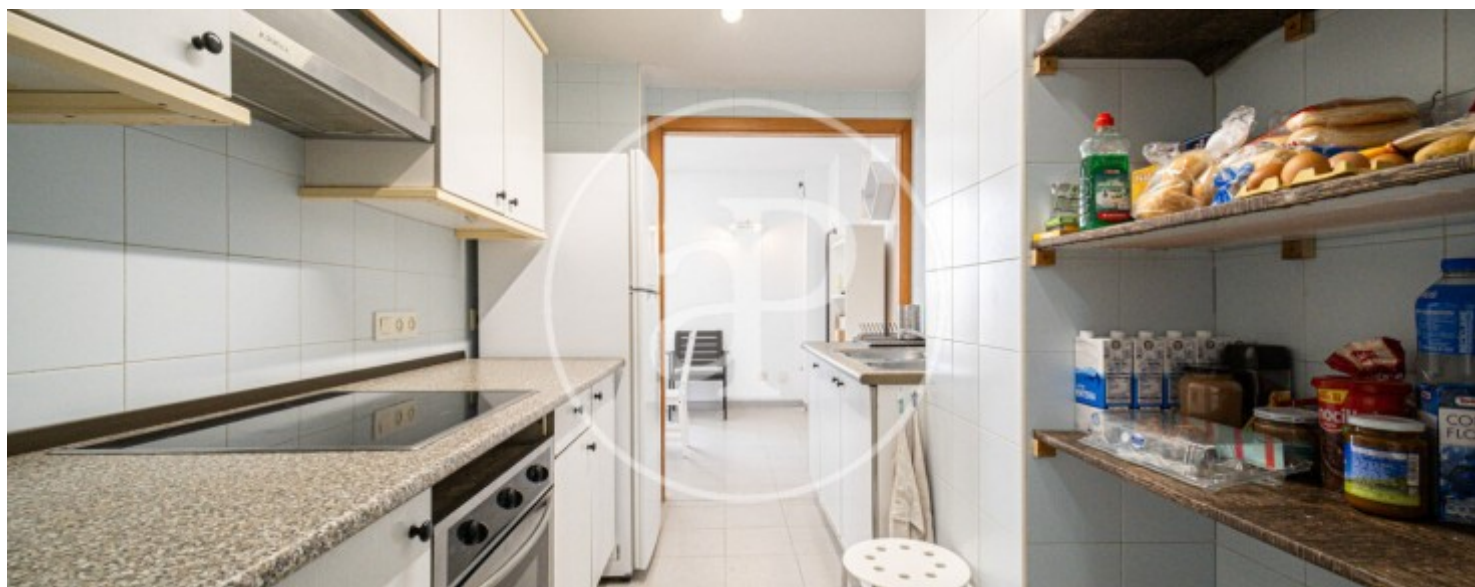
S'Arenal, Lluçmajor

REF. APM2408004



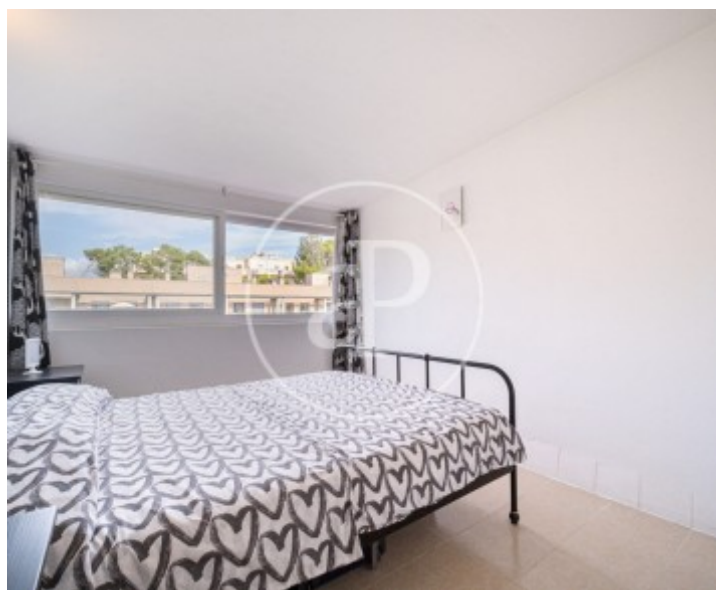
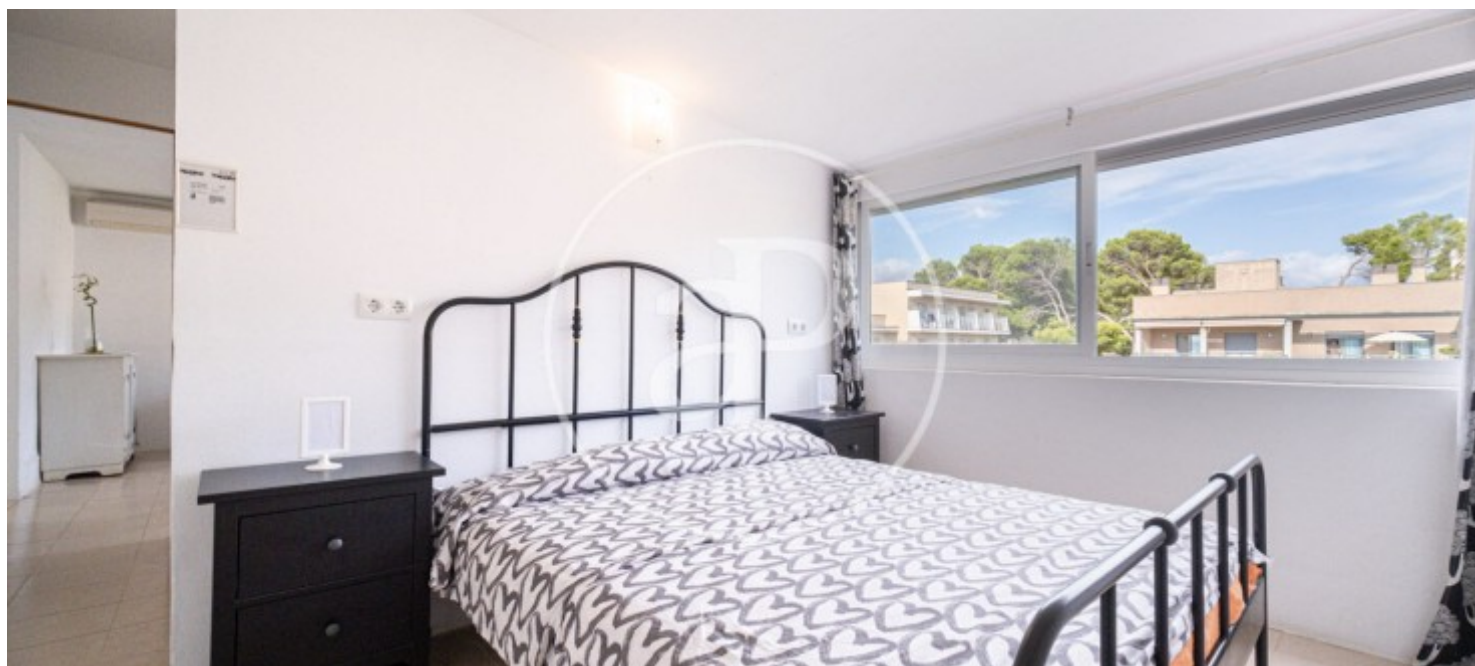
S'Arenal, Llucmajor

REF. APM2408004



S'Arenal, Llucmajor

REF. APM2408004



The information about any property is not binding to any offer or contract. Any verbal or written declaration made by aProperties with regards to the value or condition of the property should not be considered accurate or factual. The pictures make reference to some parts of the property at the times that they were taken. The areas, dimensions and distances that are given are approximate and should be checked by the client. The images are computer generated and are just an approximate indication of the real appearance of the property; these may change at any time. The information with regards to the property may also change at any time.

For **more information** or
to make an appointment

apropertiespalma@aproperties.es
Tel: 871 16 01 60
www.aproperties.es